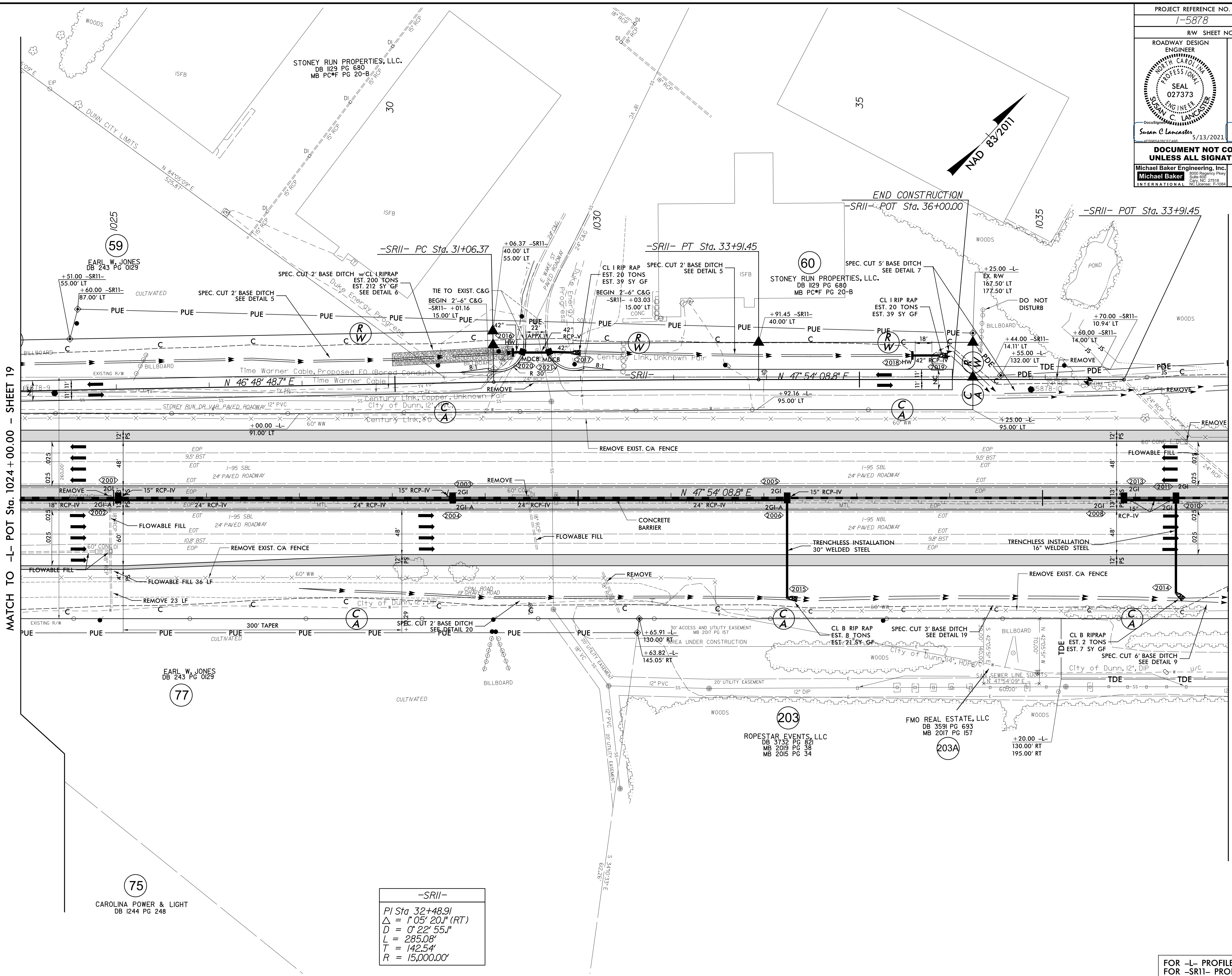


PROJECT REFERENCE NO. 1-5878		SHEET NO. 20	
RW SHEET NO.			
ROADWAY DESIGN ENGINEER SUSAN C LANCASTER SEAL 027373 5/13/2021		HYDRAULICS ENGINEER JOSHUA G DALTON SEAL 26971 5/12/2021	
DOCUMENT NOT CONSIDERED FINAL UNLESS ALL SIGNATURES COMPLETED			
Michael Baker Engineering, Inc. INTERNATIONAL		SUNGATE DESIGN GROUP, P.A.	



MATCH TO -L- POT Sta. 1024+00.00 - SHEET 19

MATCH TO -L- POT Sta. 1037+00.00 - SHEET 21

-SR11-
PI Sta 32+48.91
$\Delta = 1' 05'' 20.1'' (RT)$
$D = 0' 22'' 55.1''$
$L = 285.08'$
$T = 142.54'$
$R = 15,000.00'$

12-MAR-2021 08:46 - 5986B_Rdly_psh_20.dgn

FOR -L- PROFILE SEE SHEET 74
FOR -SR11- PROFILE SEE SHEET 104