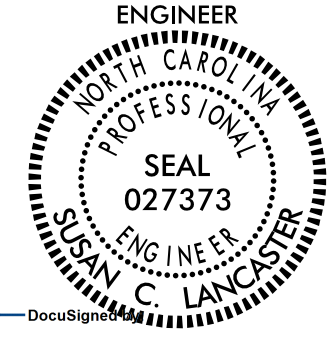
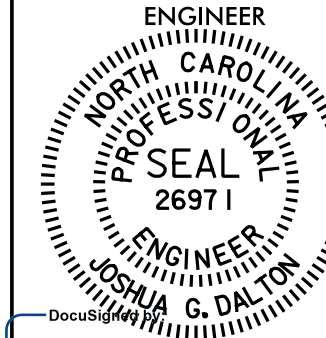


PROJECT REFERENCE NO. 1-5878		SHEET NO. 18	
RW SHEET NO.			
ROADWAY DESIGN ENGINEER		HYDRAULICS ENGINEER	
			
Susan C. Lancaster 5/13/2021		Joshua G. Dalton 5/12/2021	
DOCUMENT NOT CONSIDERED FINAL UNLESS ALL SIGNATURES COMPLETED			
Michael Baker Engineering, Inc. 1800 Prosperity Place Suite 800, No. 27518 Charlotte, NC 28217 Tel: 704.366.1000 Fax: 704.366.1004		SUNGLATE DESIGN GROUP, P.A. 10000 Prosperity Place Suite 800, No. 27518 Charlotte, NC 28217 Tel: 704.366.1000 Fax: 704.366.1004	

-SBCD-

PI Sta 25+73.87 Δ = 9°02' 24.4" (RT) D = 3' 22' 13.2" L = 268.23' T = 134.39' R = 1,700.00'	PI Sta 31+44.59 Δ = 15° 43' 21.5" (LT) D = 3' 22' 13.2" L = 268.23' T = 134.39' R = 1,700.00'
--	--

-NBCD-

PI Sta 33+79.72 Δ = 37° 57' 02.4" (RT) D = 3' 49' 11.0" L = 993.55' T = 515.77' R = 1,500.00'
--

-LREV-

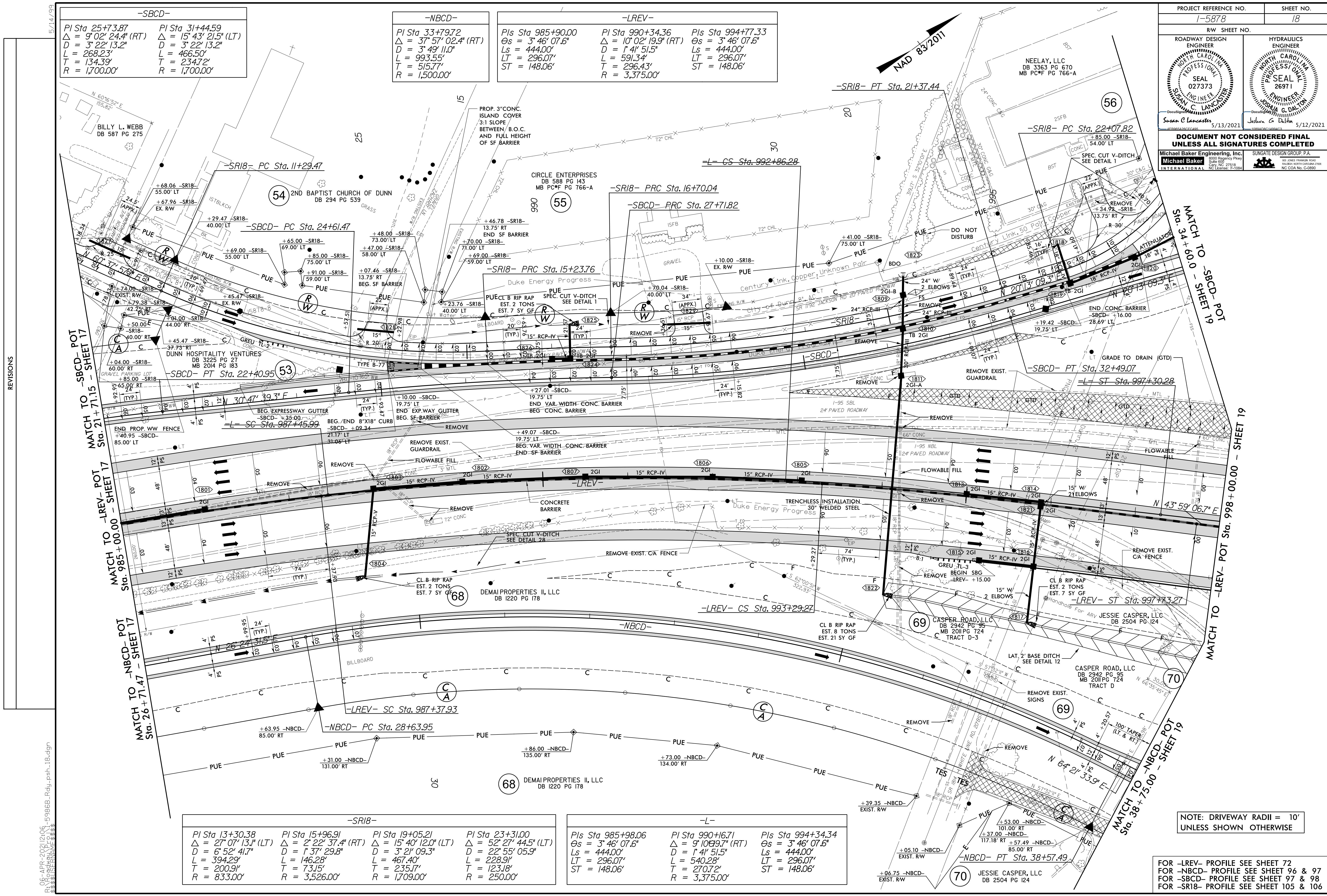
PIs Sta 985+90.00 Δs = 3° 46' 07.6" Ls = 444.00' LT = 296.07' ST = 148.06'	PI Sta 990+34.36 Δ = 10° 02' 19.9" (RT) D = 1' 41' 51.5" L = 591.34' T = 296.43' R = 3,375.00'	PIs Sta 994+77.33 Δs = 3° 46' 07.6" Ls = 444.00' LT = 296.07' ST = 148.06'
--	---	--

-SR18-

PI Sta 13+30.38 Δ = 27° 07' 13.1" (LT) D = 6' 52' 41.7" L = 394.29' T = 200.91' R = 833.00'	PI Sta 15+96.91 Δ = 2° 22' 37.4" (RT) D = 1' 37' 29.8" L = 146.28' T = 73.15' R = 3,526.00'	PI Sta 19+05.21 Δ = 15° 40' 12.0" (LT) D = 3' 21' 09.3" L = 467.40' T = 235.17' R = 1,709.00'	PI Sta 23+31.00 Δ = 52° 27' 44.5" (LT) D = 22' 55' 05.9" L = 228.91' T = 123.18' R = 250.00'
--	--	--	---

-L-

PIs Sta 985+98.06 Δs = 3° 46' 07.6" Ls = 444.00' LT = 296.07' ST = 148.06'	PI Sta 990+16.71 Δ = 9° 10' 09.7" (RT) D = 1' 41' 51.5" L = 540.28' T = 270.72' R = 3,375.00'	PIs Sta 994+34.34 Δs = 3° 46' 07.6" Ls = 444.00' LT = 296.07' ST = 148.06'
--	--	--



NOTE: DRIVEWAY RADII = 10'
UNLESS SHOWN OTHERWISE

FOR -LREV- PROFILE SEE SHEET 72
FOR -NBCD- PROFILE SEE SHEET 96 & 97
FOR -SBCD- PROFILE SEE SHEET 97 & 98
FOR -SR18- PROFILE SEE SHEET 105 & 106

R:\06-APR-2021\2106-5986B-Rdy-psh-18.dgn
 5/14/2021 10:14:59 AM