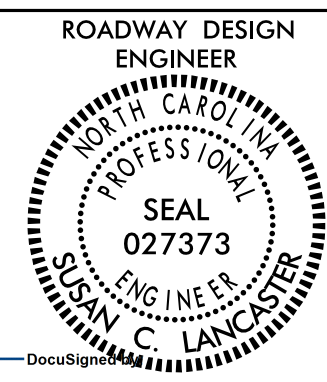
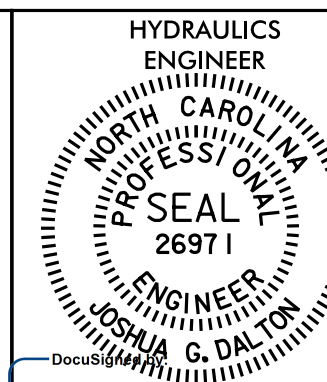
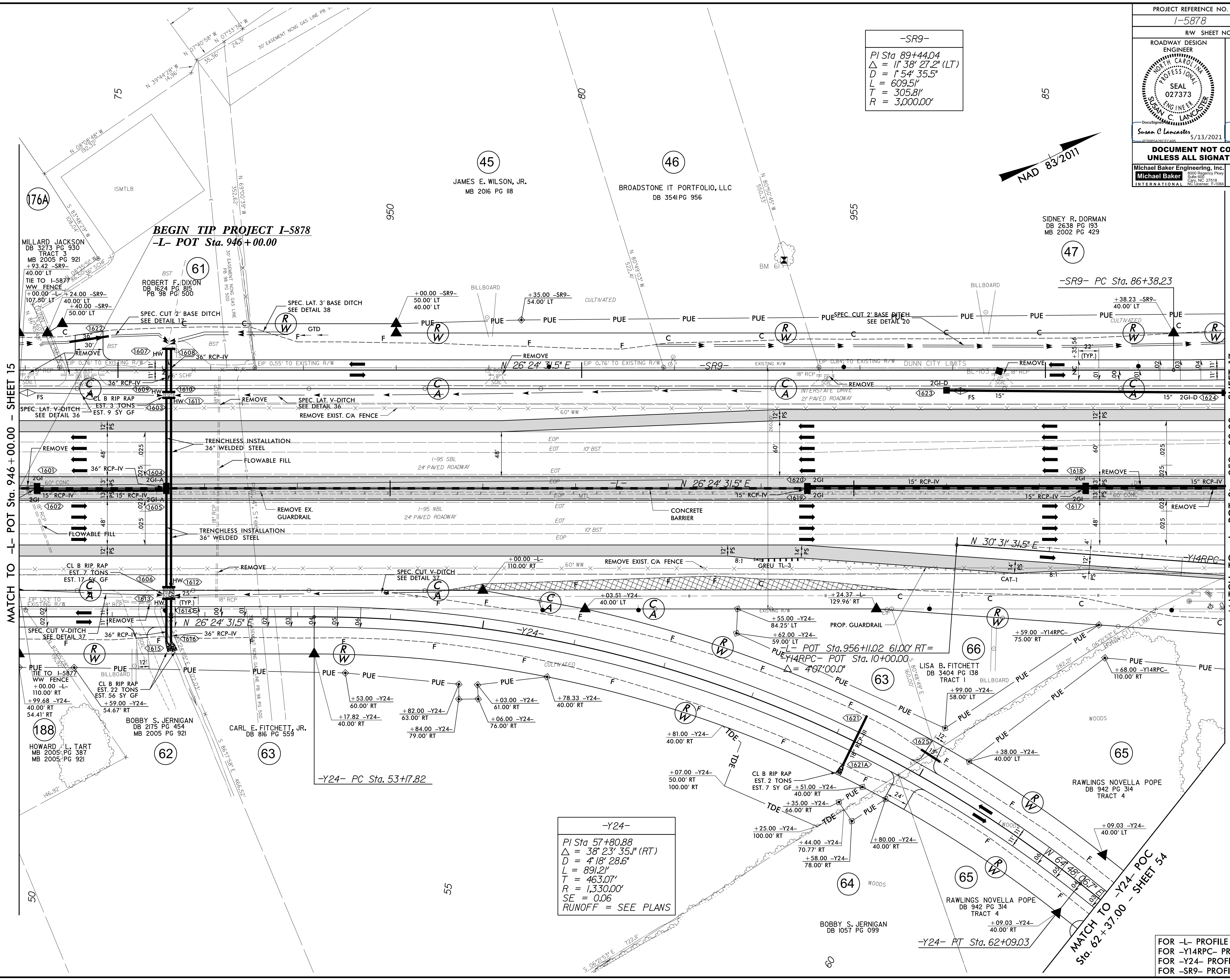


PROJECT REFERENCE NO. <b>1-5878</b>		SHEET NO. <b>16</b>	
RW SHEET NO.			
ROADWAY DESIGN ENGINEER 		HYDRAULICS ENGINEER 	
Susan C. Lancaster 5/13/2021		Joshua G. Dalton 5/12/2021	
<b>DOCUMENT NOT CONSIDERED FINAL UNLESS ALL SIGNATURES COMPLETED</b>			
Michael Baker Engineering, Inc. 1000 Regency Park Raleigh, NC 27615 Tel: 919.876.7000 Fax: 919.876.7001 www.mbakeng.com		SUNGATE DESIGN GROUP, P.A. 1000 Regency Park Raleigh, NC 27615 Tel: 919.876.7000 Fax: 919.876.7001 www.sungate.com	

**-SR9-**  
 PI Sta 89+44.04  
 $\Delta = 1^\circ 38' 27.2" (LT)$   
 $D = 1^\circ 54' 35.5"$   
 $L = 609.51'$   
 $T = 305.81'$   
 $R = 3,000.00'$



**-Y24-**  
 PI Sta 57+80.88  
 $\Delta = 38^\circ 23' 35.1" (RT)$   
 $D = 4^\circ 18' 28.6"$   
 $L = 891.21'$   
 $T = 463.07'$   
 $R = 1,330.00'$   
 $SE = 0.06$   
 RUNOFF = SEE PLANS

FOR -L- PROFILE SEE SHEET 71  
 FOR -Y14RPC- PROFILE SEE SHEET 95  
 FOR -Y24- PROFILE SEE SHEET 100  
 FOR -SR9- PROFILE SEE SHEET 102

MATCH TO -L- POT Sta. 946+00.00 - SHEET 15

MATCH TO -L- POT Sta. 959+00.00 - SHEET 17

5/14/99

R:\2-MAR-2021\08146\_5986B\_Rdy\_psh\_16.dgn