

|  |   |
|--|---|
| PROJECT REFERENCE NO.<br>1-5878  | SHEET NO.<br>14   |
| RW SHEET NO.   |   |
| ROADWAY DESIGN ENGINEER<br>SUNGATE DESIGN GROUP, P.A.<br>SEAL 027373<br>SUSAN C. LANCASTER       | HYDRAULICS ENGINEER<br>SUNGATE DESIGN GROUP, P.A.<br>SEAL 26971<br>JOSHUA G. DALTON                       |
| Susan C. Lancaster<br>5/14/2021  | Joshua G. Dalton<br>5/14/2021   |
| DOCUMENT NOT CONSIDERED FINAL<br>UNLESS ALL SIGNATURES COMPLETED                                 |   |
| Michael Baker Engineering, Inc.<br>1800 Prosperity Place<br>Cary, NC 27518<br>NC License: P-1094 | SUNGATE DESIGN GROUP, P.A.<br>100 JOHN HANCOCK ROAD<br>RALEIGH, NORTH CAROLINA 27606<br>NC CDA No. C-8899 |

ALL DRAINAGE TO BE INSTALLED BY OTHERS UNDER I-5877.  
ADJUST MEDIAN 2GI'S TO FINISHED GRADE UNDER I-5986B.

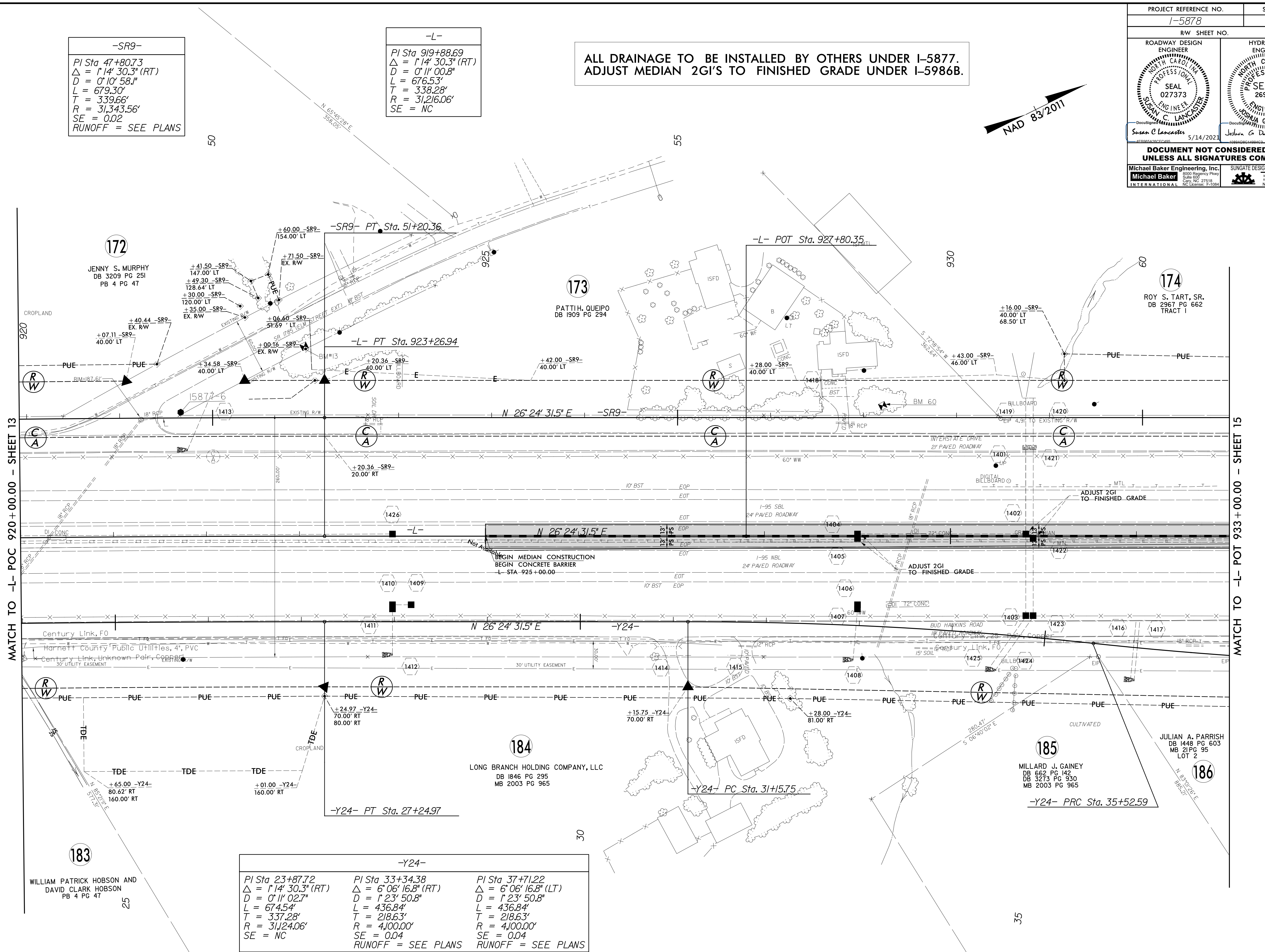


-SR9-

PI Sta 47+80.73  
 $\Delta = 1'14" 30.3" (RT)$   
 $D = 0'10" 58.1"$   
 $L = 679.30'$   
 $T = 339.66'$   
 $R = 31,343.56'$   
 $SE = 0.02$   
 RUNOFF = SEE PLANS

-L-

PI Sta 919+88.69  
 $\Delta = 1'14" 30.3" (RT)$   
 $D = 0'11" 00.8"$   
 $L = 676.53'$   
 $T = 338.28'$   
 $R = 31,216.06'$   
 $SE = NC$



MATCH TO -L- POC 920+00.00 - SHEET 13

MATCH TO -L- POT 933+00.00 - SHEET 15

183

WILLIAM PATRICK HOBSON AND  
DAVID CLARK HOBSON  
PB 4 PG 47

-Y24-

|  |   |   |
|--|---|---|
| PI Sta 23+87.72<br>$\Delta = 1'14" 30.3" (RT)$<br>$D = 0'11" 02.7"$<br>$L = 674.54'$<br>$T = 337.28'$<br>$R = 31,124.06'$<br>$SE = NC$ | PI Sta 33+34.38<br>$\Delta = 6'06" 16.8" (RT)$<br>$D = 1'23" 50.8"$<br>$L = 436.84'$<br>$T = 218.63'$<br>$R = 4,100.00'$<br>$SE = 0.04$<br>RUNOFF = SEE PLANS | PI Sta 37+71.22<br>$\Delta = 6'06" 16.8" (LT)$<br>$D = 1'23" 50.8"$<br>$L = 436.84'$<br>$T = 218.63'$<br>$R = 4,100.00'$<br>$SE = 0.04$<br>RUNOFF = SEE PLANS |
|--|---|---|

184

LONG BRANCH HOLDING COMPANY, LLC  
DB 1846 PG 295  
MB 2003 PG 965

185

MILLARD J. GAINEY  
DB 662 PG 142  
DB 3273 PG 930  
MB 2003 PG 965

186

JULIAN A. PARRISH  
DB 1448 PG 603  
MB 21 PG 95  
LOT 2

5/14/2021 13-MAY-2021 11:59:06 AM R:\Projects\14-5986B-Roadway\14-5986B.dgn