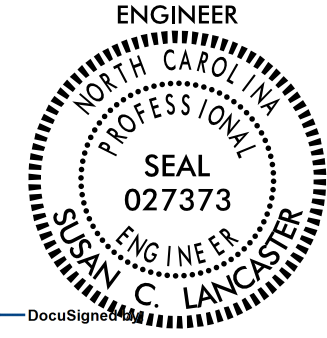
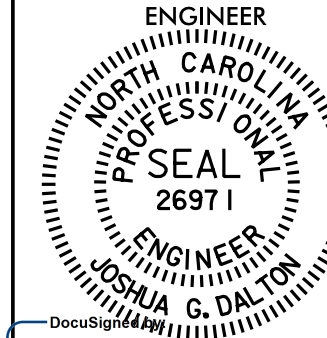


PROJECT REFERENCE NO. 1-5986B	SHEET NO. 2D-30
RW SHEET NO.	
ROADWAY DESIGN ENGINEER 	HYDRAULICS ENGINEER 
Susan C. Lancaster 5/13/2021	Joshua G. Dalton 5/13/2021
DOCUMENT NOT CONSIDERED FINAL UNLESS ALL SIGNATURES COMPLETED	
Michael Baker Engineering, Inc. 8000 Prosperity Place Charlotte, NC 27218 Lic. No. E-1084	SUNGATE DESIGN GROUP, P.A. 10000 SunGate Blvd Charlotte, NC 28215 Lic. No. C-8890

-Y19RPCA-

PIs Sta 11+08.02 θs = 3° 05' 38.3" Ls = 162.00' LT = 108.02' ST = 54.02'	PI Sta 14+19.77 Δ = 19° 30' 05.2" (RT) D = 3° 49' 11.0" L = 510.55' T = 257.77' R = 1,500.00' SE = 0.06 RUNOFF = 162'	PIs Sta 17+26.56 θs = 3° 05' 38.3" Ls = 162.00' LT = 108.02' ST = 54.02'
--	--	--

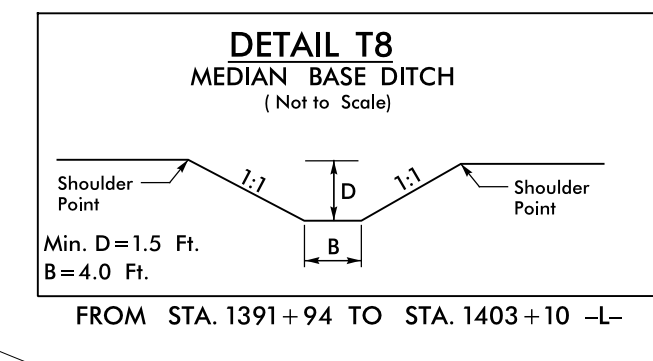
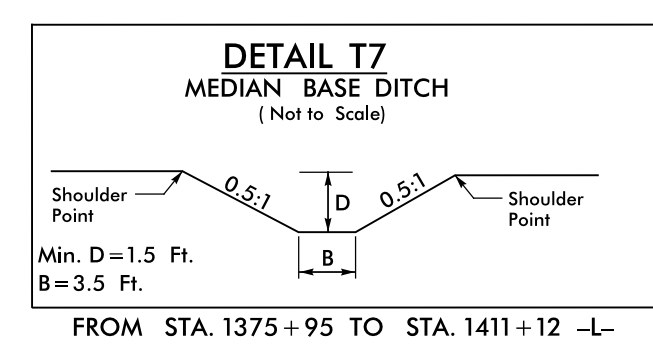
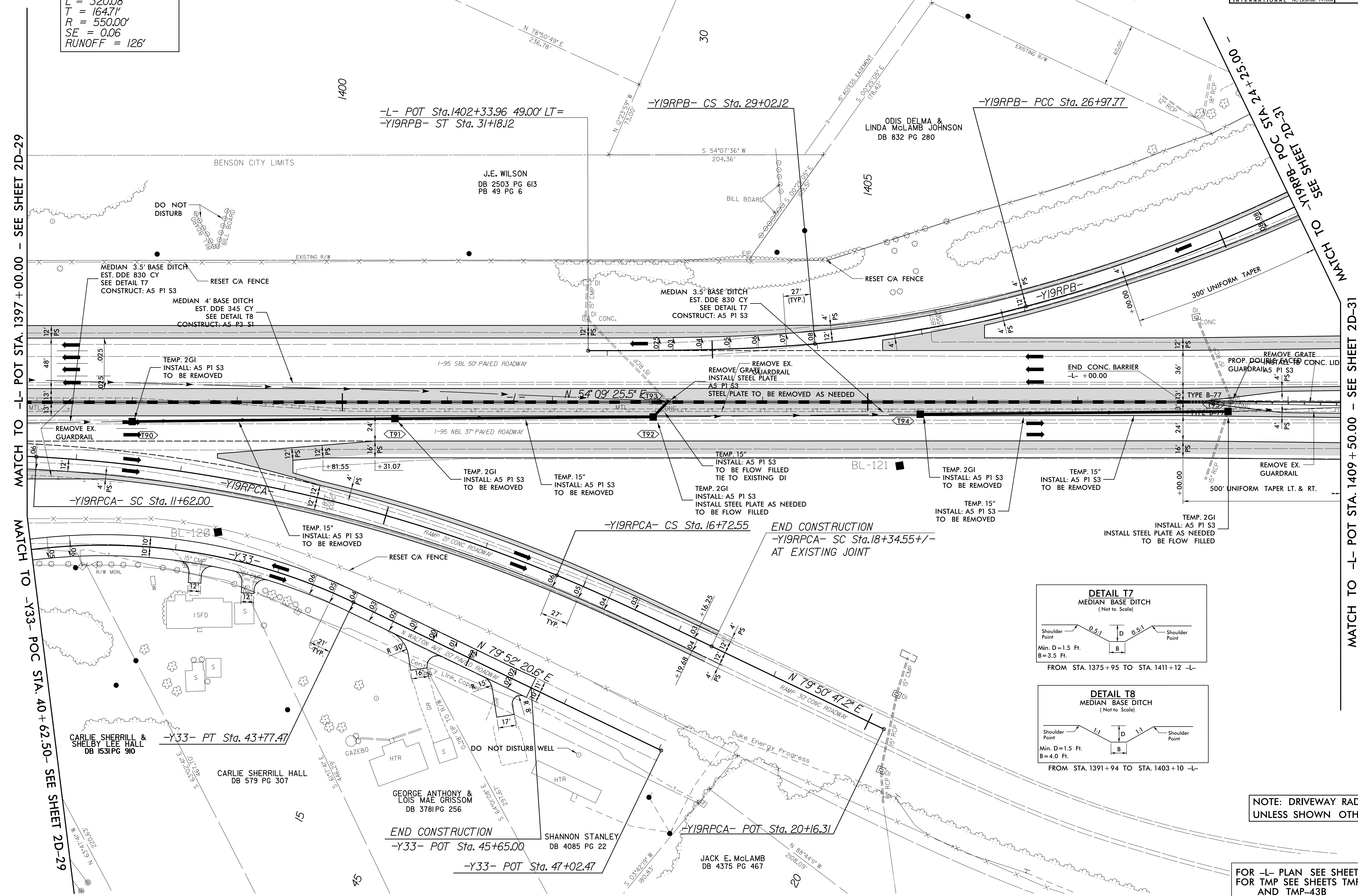
-Y19RPB-

PI Sta 23+69.44 Δ = 26° 25' 33.4" (RT) D = 3° 57' 05.2" L = 668.77' T = 340.44' R = 1,450.00' SE = 0.08 RUNOFF = 216'	PI Sta 28+00.19 Δ = 9° 45' 25.6" (RT) D = 4° 46' 28.7" L = 204.35' T = 102.42' R = 1,200.00' SE = 0.08 RUNOFF = 216'	PIs Sta 29+74.18 θs = 5° 09' 23.8" Ls = 216.00' LT = 144.06' ST = 72.06'
--	---	--

-Y33-

PI Sta 42+22.10 Δ = 33° 20' 37.8" (RT) D = 10° 25' 02.7" L = 320.08' T = 164.71' R = 550.00' SE = 0.06 RUNOFF = 126'

TEMPORARY DRAINAGE DETAIL FOR PHASED CONSTRUCTION



NOTE: DRIVEWAY RADII = 10' UNLESS SHOWN OTHERWISE

FOR -L- PLAN SEE SHEET 46 FOR TMP SEE SHEETS TMP-41B, TMP-41C, AND TMP-43B

REVISIONS

5/14/19/99

R:\P\11-MAR-2021\0912-5986B-Rdy-psh-2D-30.dgn

MATCH TO -L- POT STA. 1397+00.00 - SEE SHEET 2D-29

MATCH TO -L- POT STA. 1409+50.00 - SEE SHEET 2D-31

MATCH TO -Y19RPCB- POC STA. 24+25.00 - SEE SHEET 2D-31

MATCH TO -Y33- POC STA. 40+62.50 - SEE SHEET 2D-29