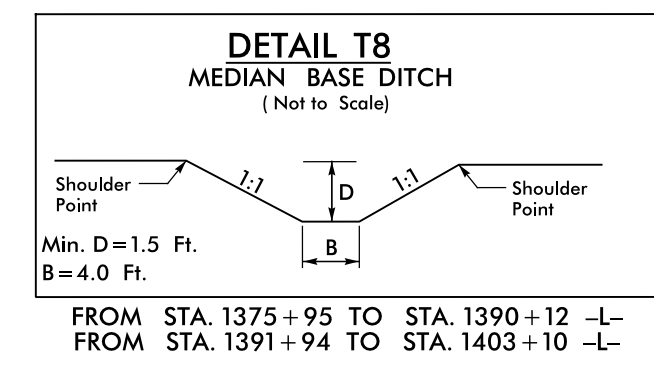
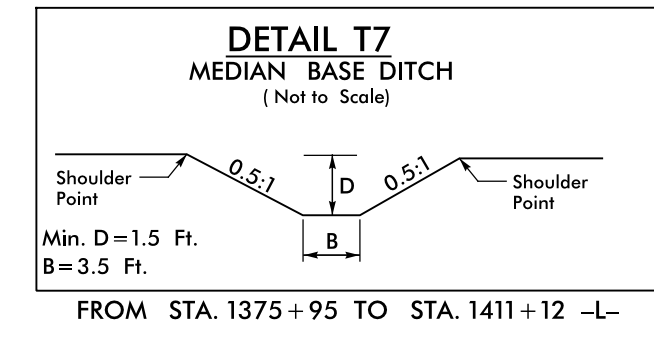


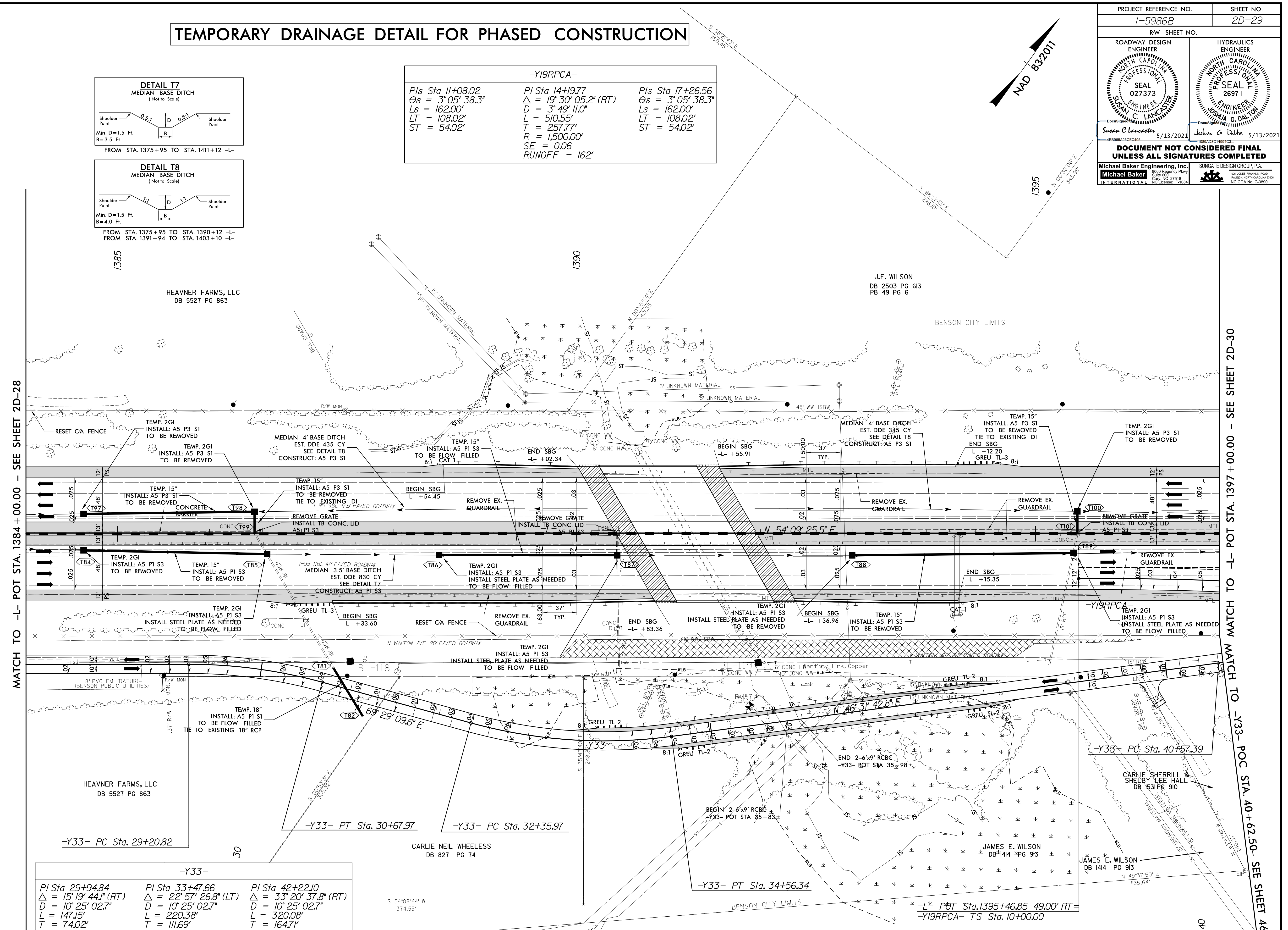
PROJECT REFERENCE NO. 1-5986B	SHEET NO. 2D-29
RW SHEET NO.	
ROADWAY DESIGN ENGINEER SUSAN C. LANCASTER SEAL 027373 5/13/2021	HYDRAULICS ENGINEER JOSHUA G. DALTON SEAL 26971 5/13/2021
<p><b>DOCUMENT NOT CONSIDERED FINAL UNLESS ALL SIGNATURES COMPLETED</b></p> <p>Michael Baker Engineering, Inc. SUNGATE DESIGN GROUP, P.A.  <small>1800 Prosperity Place, Suite 800, Cary, NC 27518        NC License: P-1094</small></p>	

# TEMPORARY DRAINAGE DETAIL FOR PHASED CONSTRUCTION



**-Y19RPCA-**

Pls Sta 11+08.02 θs = 3° 05' 38.3" Ls = 162.00' LT = 108.02' ST = 54.02'	PI Sta 14+19.77 Δ = 19° 30' 05.2" (RT) D = 3° 49' 11.0" L = 510.55' T = 257.77' R = 1,500.00' SE = 0.06 RUNOFF = 162'	Pls Sta 17+26.56 θs = 3° 05' 38.3" Ls = 162.00' LT = 108.02' ST = 54.02'
--	--	--



MATCH TO -L- POT STA. 1384+00.00 - SEE SHEET 2D-28

MATCH TO -L- POT STA. 1397+00.00 - SEE SHEET 2D-30  
MATCH TO -Y33- POC STA. 40+62.50 - SEE SHEET 46

**-Y33-**

PI Sta 29+94.84 Δ = 15° 19' 44.1" (RT) D = 10° 25' 02.7" L = 147.15' T = 74.02' R = 550.00' SE = 0.06 RUNOFF = 126'	PI Sta 33+47.66 Δ = 22° 57' 26.8" (LT) D = 10° 25' 02.7" L = 220.38' T = 116.69' R = 550.00' SE = 0.06 RUNOFF = 126'	PI Sta 42+22.10 Δ = 33° 20' 37.8" (RT) D = 10° 25' 02.7" L = 320.08' T = 164.71' R = 550.00' SE = 0.06 RUNOFF = 126'
--	---	---

NOTE: DRIVEWAY RADII = 10' UNLESS SHOWN OTHERWISE

FOR -L- PROFILE SEE SHEET 45 FOR TMP SEE SHEETS TMP-39A, TMP-41A, TMP-41B, TMP 43A, AND TMP-43B

REVISIONS

5/14/1999

R:\P\2021\0912\_5986B\_Rdy\_psh\_2D-29.dgn