

TEMPORARY DRAINAGE DETAIL FOR PHASED CONSTRUCTION

PROJECT REFERENCE NO. 1-5986B	SHEET NO. 2D-27
RW SHEET NO.	
ROADWAY DESIGN ENGINEER SUSAN C. LANCASTER NORTH CAROLINA PROFESSIONAL SEAL 027373 5/13/2021	HYDRAULICS ENGINEER JOSHUA G. DALTON NORTH CAROLINA PROFESSIONAL SEAL 26971 5/13/2021
DOCUMENT NOT CONSIDERED FINAL UNLESS ALL SIGNATURES COMPLETED	
Michael Baker Engineering, Inc. INTERNATIONAL	SUNGATE DESIGN GROUP, P.A.

-L-
 PI Sta 1369+70.87
 $\Delta = 0^{\circ} 09' 19.6" (LT)$
 $D = 0^{\circ} 08' 00.0"$
 $L = 116.58'$
 $T = 58.29'$
 $R = 42,971.83'$
 $SE = NC$

-Y33-
 PI Sta 15+39.74
 $\Delta = 95^{\circ} 56' 32.5" (RT)$
 $D = 13^{\circ} 19' 28.6"$
 $L = 720.04'$
 $T = 477.08'$
 $R = 430.00'$
 $SE = 0.06$
 $RUNOFF = 120'$

NOTE: DRIVEWAY RADII = 10'
UNLESS SHOWN OTHERWISE

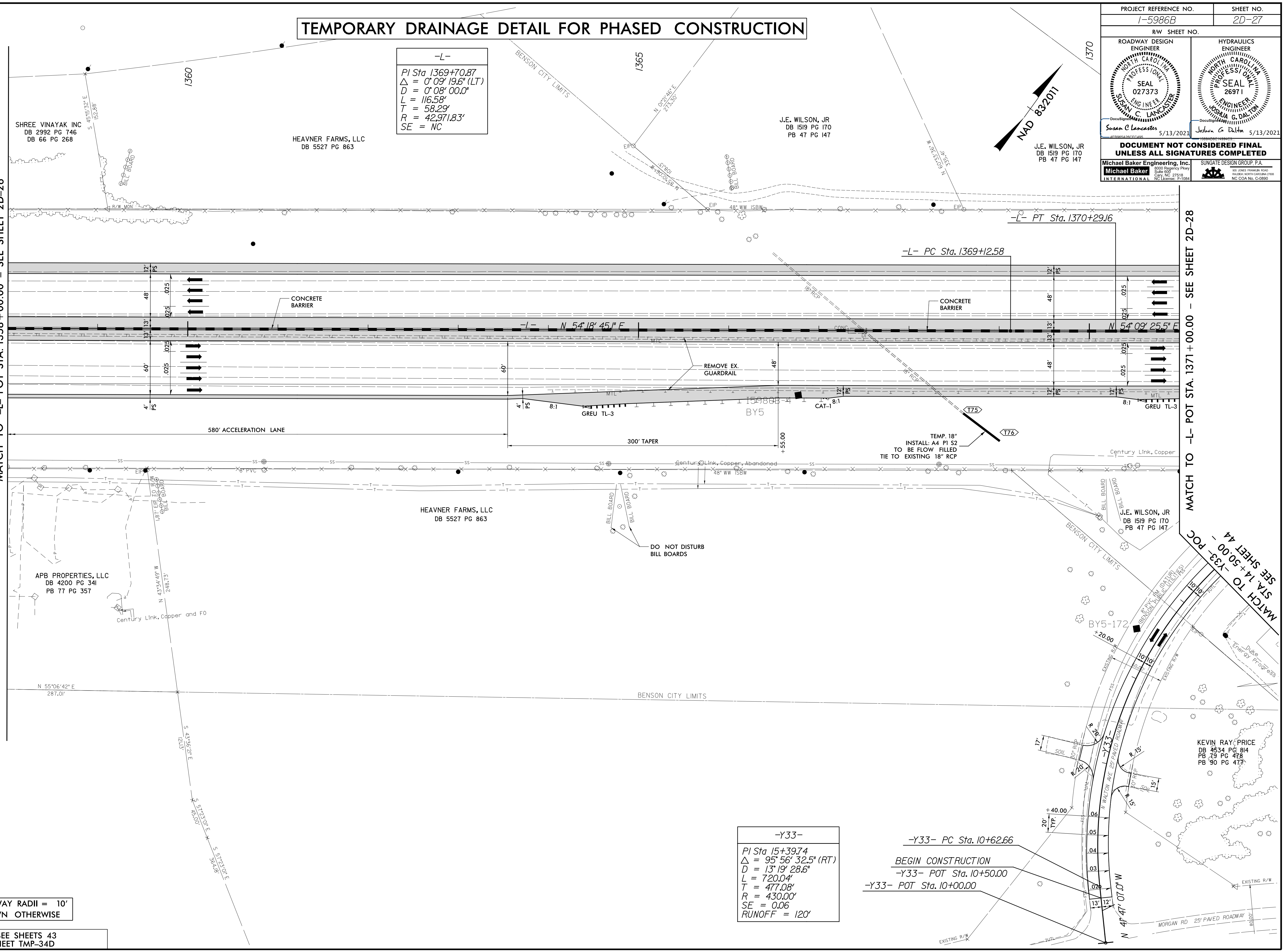
FOR -L- PLAN SEE SHEETS 43
FOR TMP SEE SHEET TMP-34D

REVISIONS

MATCH TO -L- POT STA. 1358+00.00 - SEE SHEET 2D-26

MATCH TO -L- POT STA. 1371+00.00 - SEE SHEET 2D-28

MATCH TO -Y33- FOC
SEE SHEET 44
STA. 14+50.00



11-MAR-2021 09:12 1-5986B_Rdy.psh_2D-27.dgn
 R:\338338\11-MAR-2021 09:12 1-5986B_Rdy.psh_2D-27.dgn