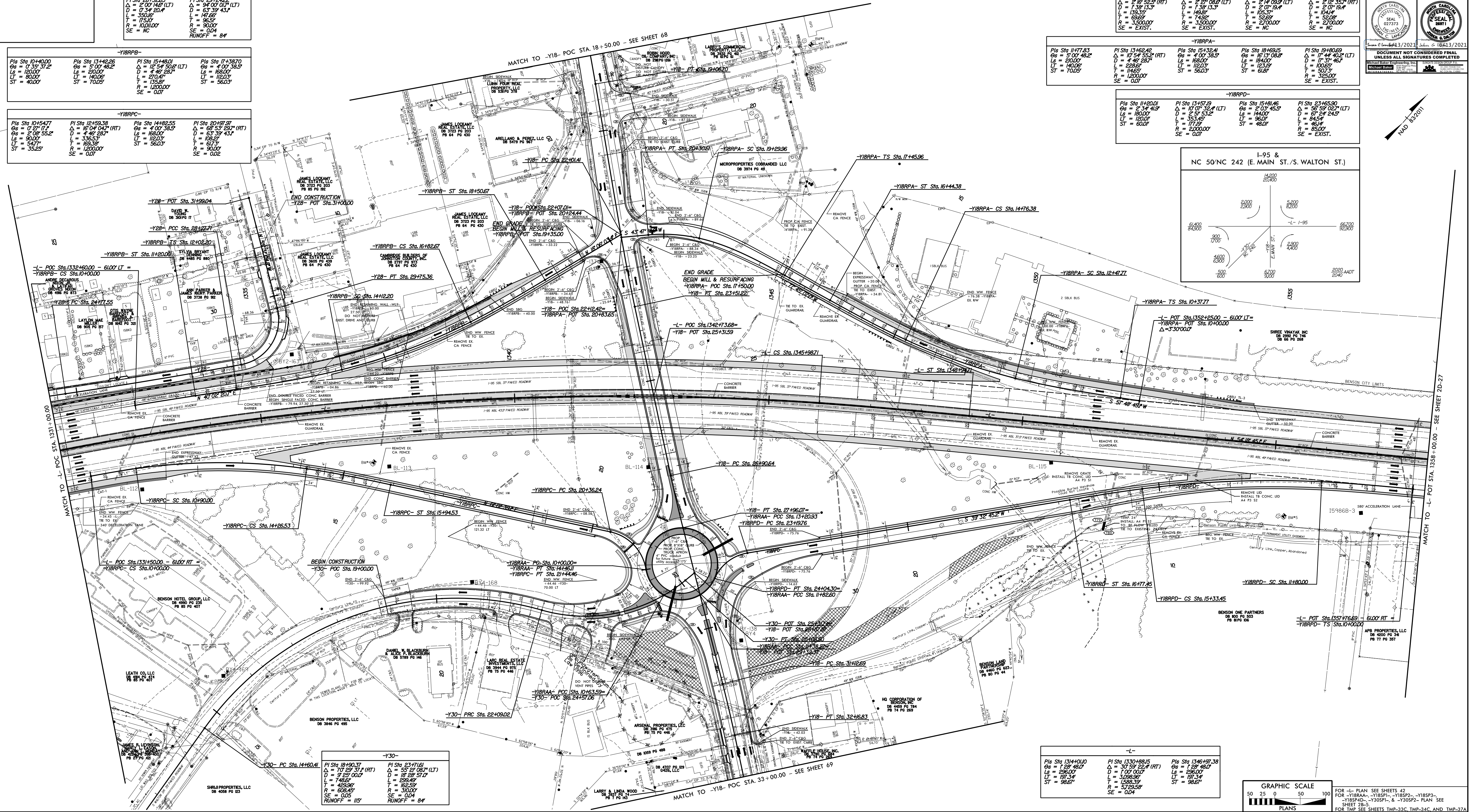


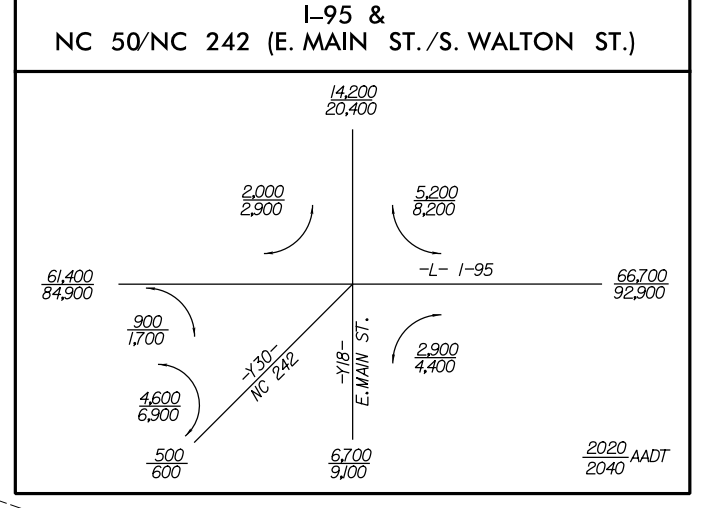
REVISIONS

-Y2B-			
PI Sta 26+52.65 Δ = 2'00" 148' (LT) D = 5'34" 204.4' L = 350.16' T = 102.00' R = 102.00' SE = NC	PI Sta 29+24.22 Δ = 94'00" 07' (LT) D = 53'29" 43.4' L = 168.00' T = 112.03' R = 90.00' SE = 0.04 RUNOFF = 84'	PI Sta 15+48.01 Δ = 12'54" 50.8' (LT) D = 4'49" 25.7' L = 112.03' T = 135.81' R = 1200.00' SE = 0.07	PI Sta 11+38.70 Δ = 4'00" 38.5' D = 168.00' L = 112.03' T = 135.81' R = 1200.00' SE = 0.07
-Y18PB-			
PI Sta 10+40.00 Δ = 1'39" 37.2' D = 80.00' L = 140.06' T = 140.06' R = 1200.00' SE = 0.07	PI Sta 13+42.26 Δ = 5'00" 48.2' D = 4'49" 25.7' L = 112.03' T = 135.81' R = 1200.00' SE = 0.07	PI Sta 15+48.01 Δ = 12'54" 50.8' (LT) D = 4'49" 25.7' L = 112.03' T = 135.81' R = 1200.00' SE = 0.07	PI Sta 17+38.70 Δ = 4'00" 38.5' D = 168.00' L = 112.03' T = 135.81' R = 1200.00' SE = 0.07
-Y18PC-			
PI Sta 10+54.71 Δ = 0'27" 17.1' D = 2'08" 55.2' L = 90.00' T = 54.71' R = 35.25' SE = 0.07	PI Sta 12+59.38 Δ = 16'04" 04.7' (RT) D = 168.00' L = 336.53' T = 168.38' R = 1200.00' SE = 0.07	PI Sta 14+26.55 Δ = 4'00" 38.5' D = 168.00' L = 112.03' T = 135.81' R = 90.00' SE = 0.02	PI Sta 20+19.97 Δ = 68'53" 29.7' (RT) D = 63'39" 43.4' L = 108.29' T = 92.73' R = 90.00' SE = 0.02

TEMPORARY DRAINAGE DETAIL FOR PHASED CONSTRUCTION



-Y18-			
PI Sta 18+37.03 Δ = 2'16" 55.5' (RT) D = 7'39" 13.3' L = 138.39' T = 69.69' R = 3500.00' SE = EXIST.	PI Sta 22+76.33 Δ = 2'07" 08.9' (LT) D = 7'39" 13.3' L = 149.81' T = 149.81' R = 3500.00' SE = EXIST.	PI Sta 27+43.33 Δ = 2'12" 35.1' (LT) D = 2'07" 19.4' L = 105.37' T = 52.69' R = 2700.00' SE = NC	PI Sta 31+46.47 Δ = 2'12" 35.1' (LT) D = 2'07" 19.4' L = 104.14' T = 52.69' R = 2700.00' SE = NC
-Y18PA-			
PI Sta 11+77.23 Δ = 3'00" 46.2' D = 200.00' L = 140.06' T = 140.06' R = 1200.00' SE = 0.07	PI Sta 13+62.42 Δ = 10'54" 55.5' (RT) D = 4'49" 25.7' L = 228.81' T = 114.65' R = 1200.00' SE = 0.07	PI Sta 15+32.41 Δ = 4'00" 38.5' (LT) D = 168.00' L = 112.03' T = 135.81' R = 90.00' SE = 0.07	PI Sta 18+69.15 Δ = 16'13" 08.8' (LT) D = 144.00' L = 123.19' T = 61.67' R = 325.00' SE = EXIST.
-Y18PB-			
PI Sta 11+20.01 Δ = 3'00" 46.2' D = 168.00' L = 120.00' T = 60.00' R = 2000.00' SE = 0.07	PI Sta 13+17.19 Δ = 10'07" 36.4' (LT) D = 2'57" 53.2' L = 353.45' T = 171.73' R = 2000.00' SE = 0.07	PI Sta 15+18.46 Δ = 2'03" 45.5' (LT) D = 144.00' L = 96.00' T = 48.00' R = 85.00' SE = EXIST.	PI Sta 21+65.50 Δ = 36'59" 02.1' (LT) D = 17'37" 46.7' L = 100.57' T = 50.33' R = 325.00' SE = EXIST.



PROJECT REFERENCE NO. 7-59860 SHEET NO. 27-26

ROADWAY DESIGN ENGINEER

SEAL 18811

DOCUMENT NOT CONSIDERED FINAL UNLESS ALL SIGNATURES COMPLETED

-Y30-			
PI Sta 18+00.37 Δ = 10'29" 37.7' (RT) D = 748.20' L = 429.96' T = 226.45' R = 300.00' SE = 0.05 RUNOFF = 115'	PI Sta 23+71.61 Δ = 55'01" 08.7' (LT) D = 18'59" 51.0' L = 296.6' T = 162.55' R = 300.00' SE = 0.04 RUNOFF = 84'	PI Sta 14+60.41 Δ = 10'29" 37.7' (RT) D = 748.20' L = 429.96' T = 226.45' R = 300.00' SE = 0.05 RUNOFF = 115'	PI Sta 13+46+197.38 Δ = 1'29" 40.0' D = 1.00' 0.00' L = 3199.96' T = 1599.98' R = 5729.55' SE = 0.04

-L-		
PI Sta 13+410.00 Δ = 1'29" 40.0' D = 1.00' 0.00' L = 3199.96' T = 1599.98' R = 5729.55' SE = 0.04	PI Sta 1330+88.15 Δ = 30'59" 55.4' (RT) D = 1.00' 0.00' L = 3199.96' T = 1599.98' R = 5729.55' SE = 0.04	PI Sta 1346+197.38 Δ = 1'29" 40.0' D = 1.00' 0.00' L = 3199.96' T = 1599.98' R = 5729.55' SE = 0.04

GRAPHIC SCALE

50 25 0 50 100

PLANS

FOR -L- PLAN SEE SHEETS 42, 43, 44, 45, 46, 47, 48, 49, 50, 51, 52, 53, 54, 55, 56, 57, 58, 59, 60, 61, 62, 63, 64, 65, 66, 67, 68, 69, 70, 71, 72, 73, 74, 75, 76, 77, 78, 79, 80, 81, 82, 83, 84, 85, 86, 87, 88, 89, 90, 91, 92, 93, 94, 95, 96, 97, 98, 99, 100