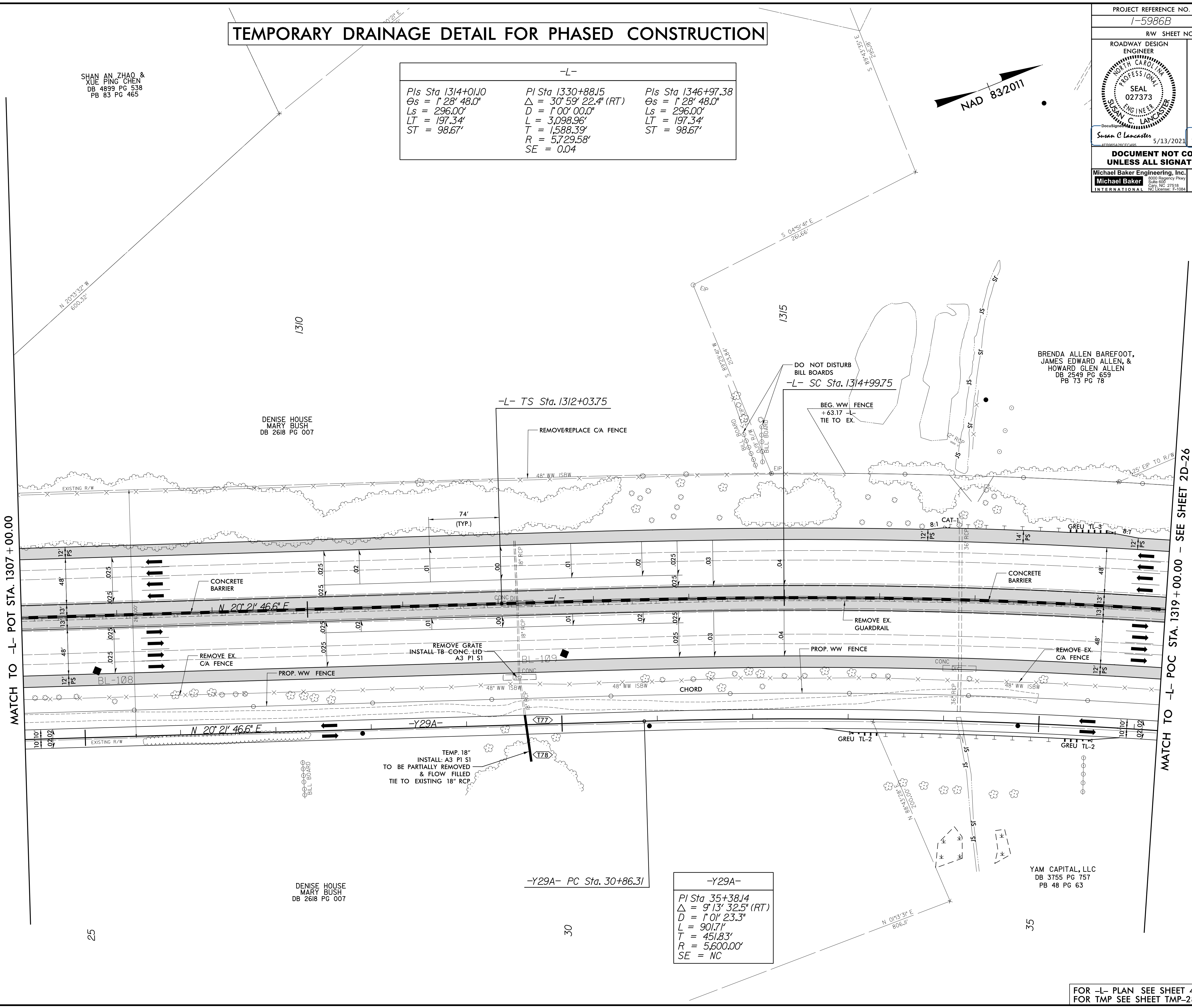
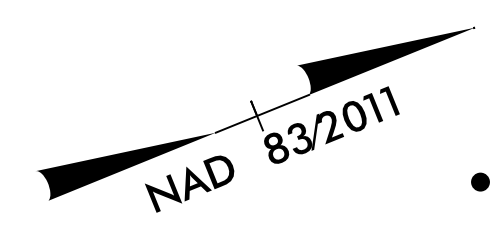


|  |  |  |  |
|--|--|--|--|
| PROJECT REFERENCE NO.<br>1-5986B                                 |  | SHEET NO.<br>2D-25                                   |  |
| RW SHEET NO.   |  |  |  |
| ROADWAY DESIGN ENGINEER<br>SEAL 027373<br>SUSAN C LANCASTER      |  | HYDRAULICS ENGINEER<br>SEAL 26971<br>JOSHUA G DALTON |  |
| Susan C Lancaster 5/13/2021                                      |  | Joshua G Dalton 5/13/2021                            |  |
| DOCUMENT NOT CONSIDERED FINAL<br>UNLESS ALL SIGNATURES COMPLETED |  |  |  |
| Michael Baker Engineering, Inc.<br>INTERNATIONAL                 |  | SUNGATE DESIGN GROUP, P.A.                           |  |

# TEMPORARY DRAINAGE DETAIL FOR PHASED CONSTRUCTION

| -L-                        |                                |                            |
|----------------------------|--------------------------------|----------------------------|
| Pls Sta 1314+01.0          | Pls Sta 1330+88.15             | Pls Sta 1346+97.38         |
| $\Theta_s = 1' 28' 48.0''$ | $\Delta = 30' 59' 22.4'' (RT)$ | $\Theta_s = 1' 28' 48.0''$ |
| $L_s = 296.00'$            | $D = 1' 00' 00.0''$            | $L_s = 296.00'$            |
| $LT = 197.34'$             | $L = 3,098.96'$                | $LT = 197.34'$             |
| $ST = 98.67'$              | $T = 1,588.39'$                | $ST = 98.67'$              |
|                            | $R = 5,729.58'$                |                            |
|                            | $SE = 0.04$                    |                            |



SHAN AN ZHAO, &  
XUE PING CHEN  
DB 4899 PG 538  
PB 83 PG 465

DENISE HOUSE  
MARY BUSH  
DB 2618 PG 007

BRENDA ALLEN BAREFOOT,  
JAMES EDWARD ALLEN, &  
HOWARD GLEN ALLEN  
DB 2549 PG 659  
PB 73 PG 78

YAM CAPITAL, LLC  
DB 3755 PG 757  
PB 48 PG 63

| -Y29A-              |                               |
|---------------------|-------------------------------|
| PI Sta 35+38.14     | $\Delta = 9' 13' 32.5'' (RT)$ |
| $D = 1' 01' 23.3''$ | $L = 901.71'$                 |
| $T = 451.83'$       | $R = 5,600.00'$               |
| $SE = NC$           |                               |

5/14/1999  
 R:\P\11-MAR-2021\0912-5986B-Rdy-psh-2D-25.dgn  
 \$\$\$\$SUNGATE DESIGN GROUP, P.A.