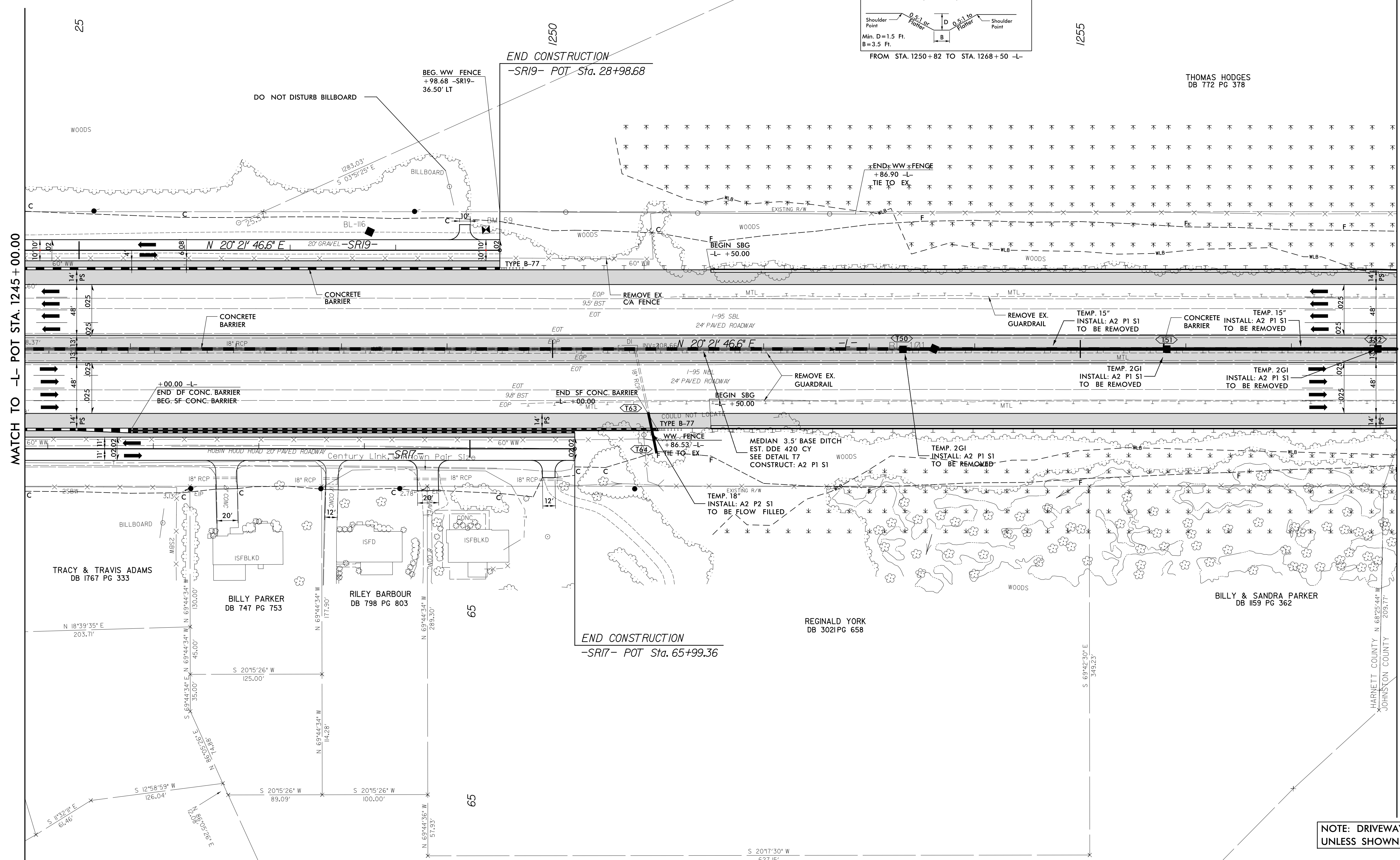
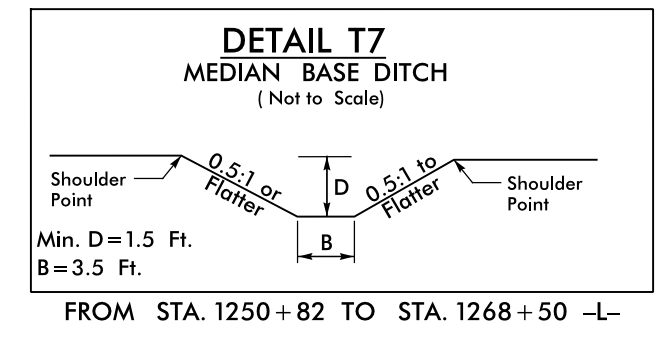
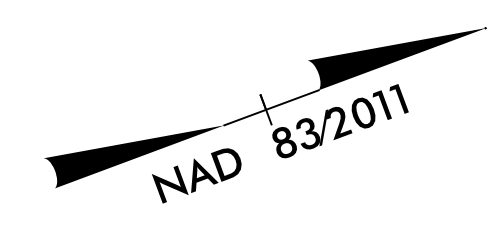


5/14/2021

TEMPORARY DRAINAGE DETAIL FOR PHASED CONSTRUCTION

PROJECT REFERENCE NO. 1-5986B	SHEET NO. 2D-22
RW SHEET NO.	
ROADWAY DESIGN ENGINEER SUSAN C. LANCASTER SEAL 027373 NORTH CAROLINA PROFESSIONAL ENGINEER	HYDRAULICS ENGINEER JOSHUA G. DALTON SEAL 26971 NORTH CAROLINA PROFESSIONAL ENGINEER
Design Date: 5/13/2021	Design Date: 5/13/2021
DOCUMENT NOT CONSIDERED FINAL UNLESS ALL SIGNATURES COMPLETED	
Michael Baker Engineering, Inc. INTERNATIONAL	SUNGATE DESIGN GROUP, P.A.



MATCH TO -L- POT STA. 1245+00.00

MATCH TO -L- POT STA. 1258+00.00 - SEE SHEET 2D-23

NOTE: DRIVEWAY RADII = 10' UNLESS SHOWN OTHERWISE

FOR -L- PLAN SEE SHEET 35 FOR TMP SEE SHEETS TMP-17O, TMP-17P AND TMP-19D

REVISIONS

11-MAR-2021 09:12:59 1-5986B_Rdy_psh_2D-22.dgn