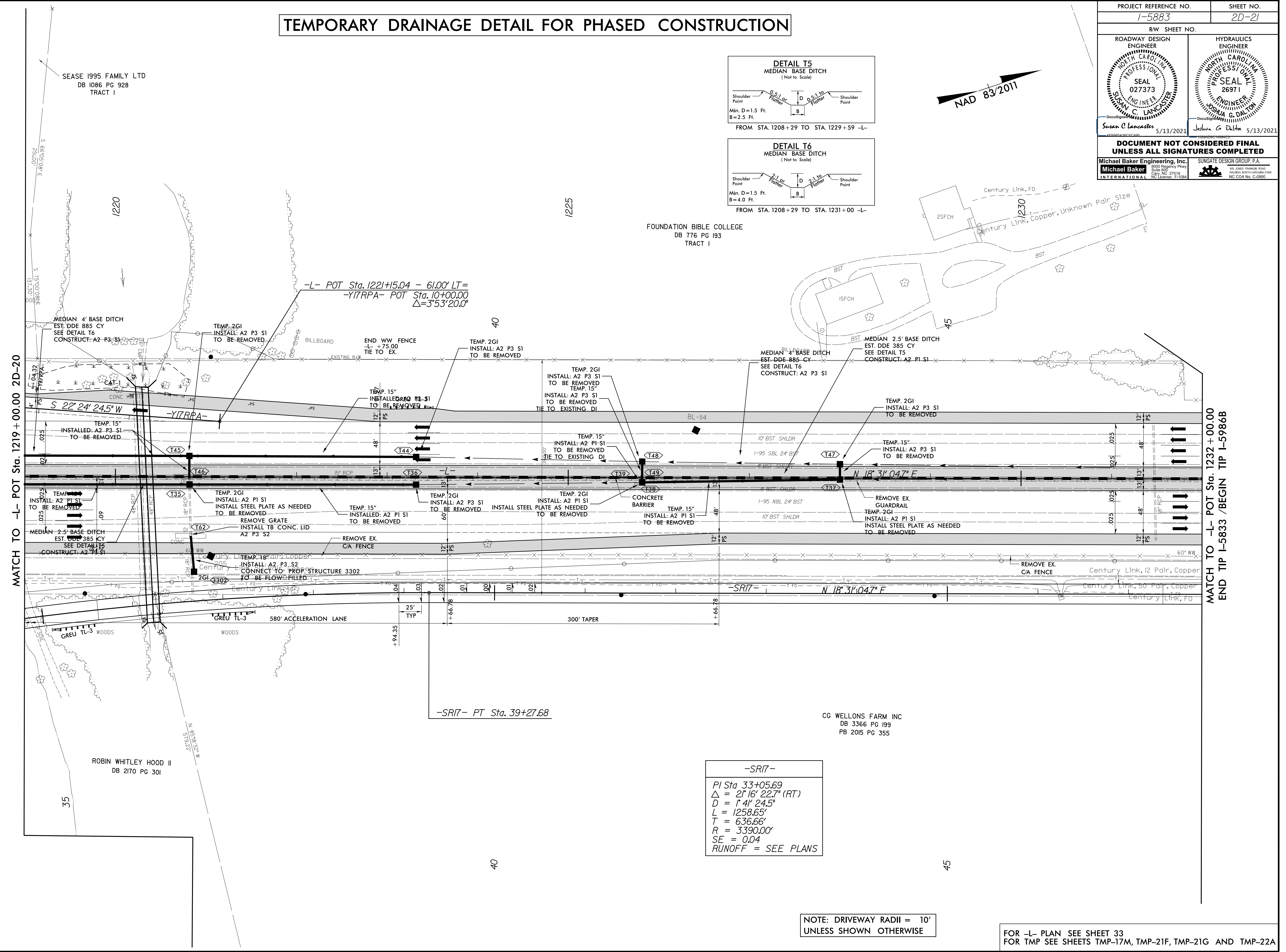
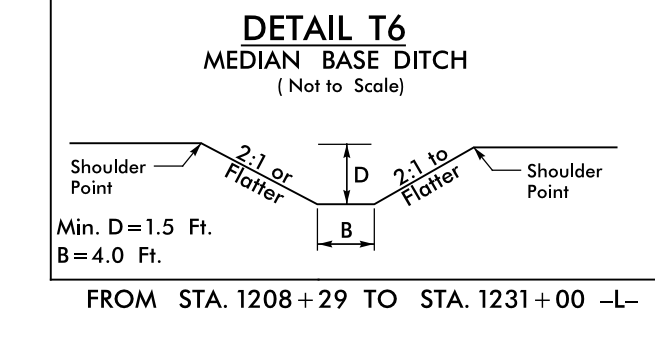
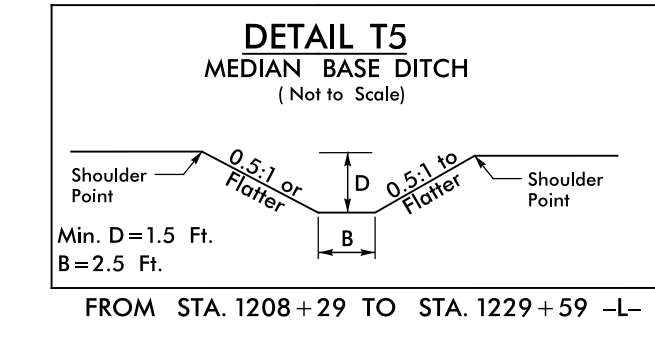
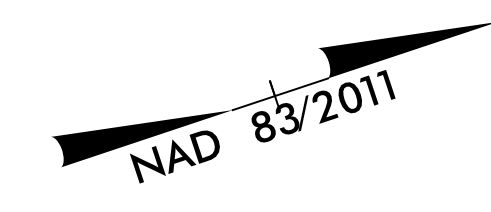


8/17/19

# TEMPORARY DRAINAGE DETAIL FOR PHASED CONSTRUCTION

PROJECT REFERENCE NO. 1-5883	SHEET NO. 2D-21
RW SHEET NO.	
ROADWAY DESIGN ENGINEER SUNGATE DESIGN GROUP, P.A. SEAL 027373 SUNNY C. LANGCASTER 5/13/2021	HYDRAULICS ENGINEER SUNGATE DESIGN GROUP, P.A. SEAL 26971 JOSHUA G. DALTON 5/13/2021
DOCUMENT NOT CONSIDERED FINAL UNLESS ALL SIGNATURES COMPLETED	
Michael Baker Engineering, Inc. INTERNATIONAL	SUNGATE DESIGN GROUP, P.A.



REVISIONS

MATCH TO -L- POT Sta. 1219+00.00 2D-20

MATCH TO -L- POT Sta. 1232+00.00  
END TIP I-5833 /BEGIN TIP I-5986B

-SR17-  
 PI Sta 33+05.69  
 $\Delta = 21' 16' 22.7''$  (RT)  
 $D = 1' 4' 24.5''$   
 $L = 1258.65'$   
 $T = 636.66'$   
 $R = 3390.00'$   
 $SE = 0.04$   
 RUNOFF = SEE PLANS

NOTE: DRIVEWAY RADII = 10'  
UNLESS SHOWN OTHERWISE

FOR -L- PLAN SEE SHEET 33  
FOR TMP SEE SHEETS TMP-17M, TMP-21F, TMP-21G AND TMP-22A

11-MAR-2021 09:12  
I:\VARS\2021\0912\1-5986B\_Rdy\_psh\_2D-21.dgn