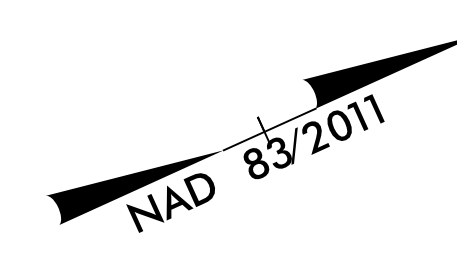


| | |
|---|--|
| PROJECT REFERENCE NO. 1-5883 | SHEET NO. 2D-19 |
| RW SHEET NO. | |
| ROADWAY DESIGN ENGINEER SUNGATE DESIGN GROUP, P.A. SEAL 027373 SUSAN C. LANCASTER 5/13/2021 | HYDRAULICS ENGINEER SUNGATE DESIGN GROUP, P.A. SEAL 26971 JOSHUA G. DALTON 5/13/2021 |
| DOCUMENT NOT CONSIDERED FINAL UNLESS ALL SIGNATURES COMPLETED | |
| Michael Baker Engineering, Inc. 1000 Ruffalo Parkway Suite 600 Cary, NC 27518 INTERNATIONAL | SUNGATE DESIGN GROUP, P.A. 602 ZONES FRANKLIN ROAD RALEIGH, NORTH CAROLINA 27603 NC License: P-1084 |

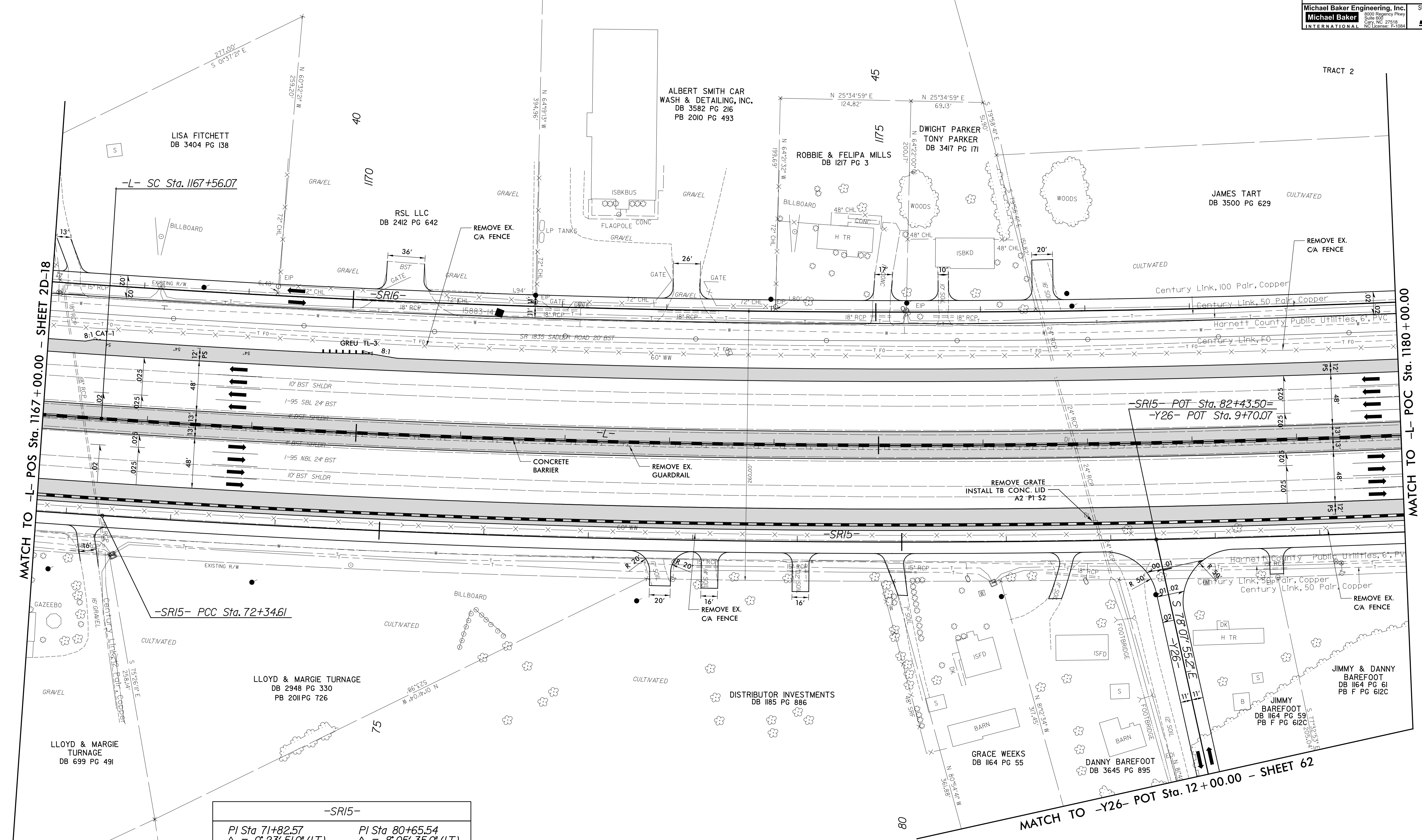
TEMPORARY DRAINAGE DETAIL FOR PHASED CONSTRUCTION



| -L- | |
|-------------------------|----------------------------|
| PIs Sta 1167+06.74 | PI Sta 1177+01.90 |
| $\Delta s = 0' 21' 50"$ | $\Delta = 9' 16' 49"$ (LT) |
| $L_s = 148.00'$ | $D = 0' 29' 30"$ |
| $LT = 98.67'$ | $L = 1887.52'$ |
| $ST = 49.33'$ | $T = 945.83'$ |
| | $R = 11653.38'$ |
| | $SE = 0.025$ |
| | RUNOFF = SEE PLANS |

| -SR16- | |
|-----------------------------|--|
| PI Sta 47+03.08 | |
| $\Delta = 10' 00' 29"$ (LT) | |
| $D = 0' 29' 50"$ | |
| $L = 2013.09'$ | |
| $T = 1009.11'$ | |
| $R = 11525.00'$ | |
| $SE = 0.02$ | |

| -SR15- | |
|------------------------------|------------------------------|
| PI Sta 71+82.57 | PI Sta 80+65.54 |
| $\Delta = 0' 23' 51.0"$ (LT) | $\Delta = 8' 05' 35.0"$ (LT) |
| $D = 0' 22' 55.1"$ | $D = 0' 29' 16.1"$ |
| $L = 104.07'$ | $L = 1659.11'$ |
| $T = 52.03'$ | $T = 830.94'$ |
| $R = 15,000.00'$ | $R = 11,745.88'$ |
| $SE = NC$ | $SE = NC$ |



REVISIONS

8/17/19

I:\MAR-2021\0912...N1-59866B_Rdy_psh_2D-19.dgn

NOTE: DRIVEWAY RADII = 10' UNLESS SHOWN OTHERWISE

FOR -L- PLAN SEE SHEET 30 FOR TMP SEE SHEET TMP-181