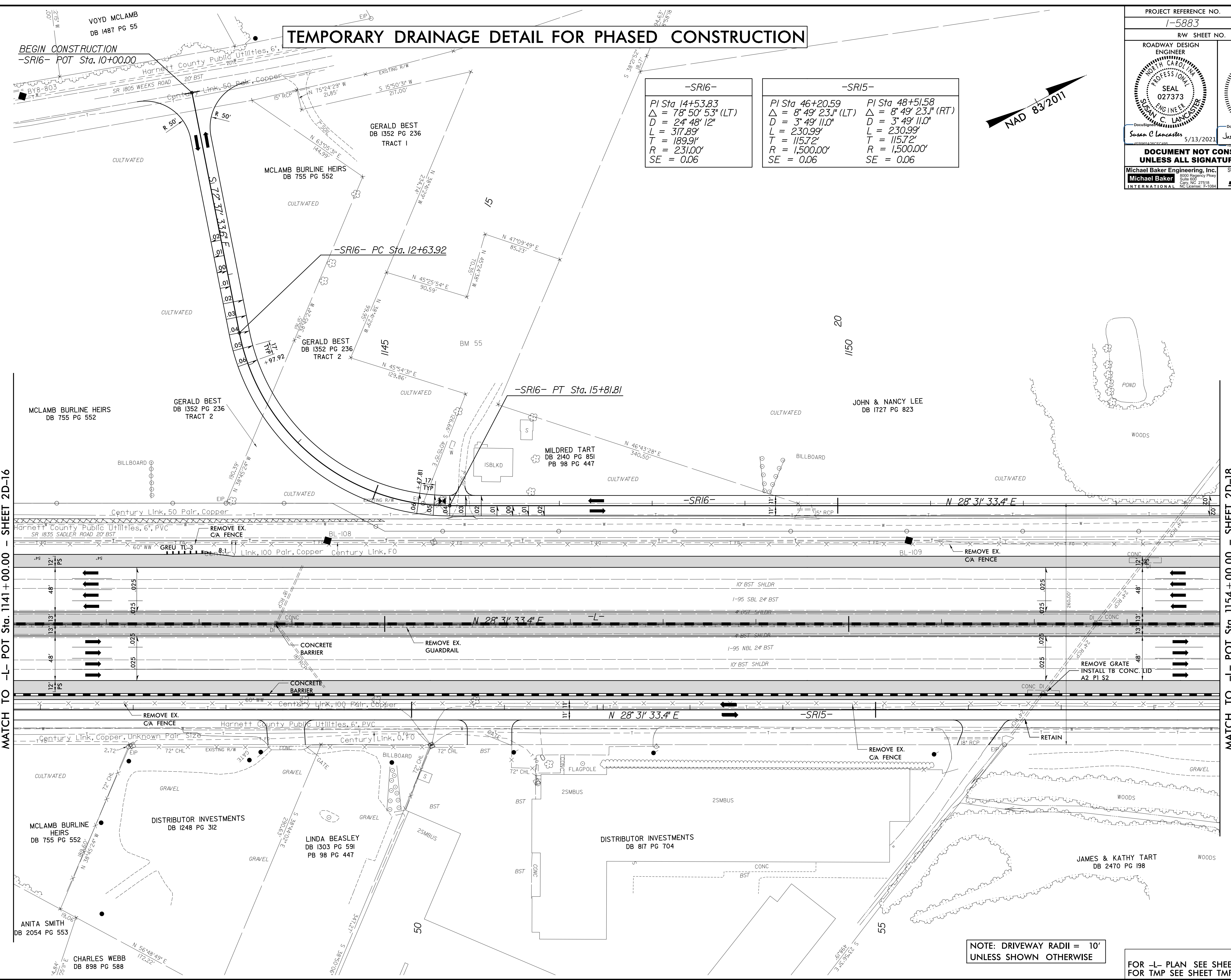


PROJECT REFERENCE NO. 1-5883		SHEET NO. 2D-17	
RW SHEET NO.			
ROADWAY DESIGN ENGINEER SUSAN C. LANCASTER SEAL 027373 5/13/2021		HYDRAULICS ENGINEER JOSHUA G. DALTON SEAL 26971 5/13/2021	
DOCUMENT NOT CONSIDERED FINAL UNLESS ALL SIGNATURES COMPLETED			
Michael Baker Engineering, Inc. INTERNATIONAL		SUNGATE DESIGN GROUP, P.A.	

TEMPORARY DRAINAGE DETAIL FOR PHASED CONSTRUCTION

-SRI6-	-SRI5-	
PI Sta 14+53.83	PI Sta 46+20.59	PI Sta 48+51.58
$\Delta = 78^{\circ} 50' 53''$ (LT)	$\Delta = 8^{\circ} 49' 23.1''$ (LT)	$\Delta = 8^{\circ} 49' 23.1''$ (RT)
D = 24' 48' 12"	D = 3' 49' 11.0"	D = 3' 49' 11.0"
L = 317.89'	L = 230.99'	L = 230.99'
T = 189.91'	T = 115.72'	T = 115.72'
R = 231.00'	R = 1,500.00'	R = 1,500.00'
SE = 0.06	SE = 0.06	SE = 0.06



MATCH TO -L- POT Sta. 1141+00.00 - SHEET 2D-16

MATCH TO -L- POT Sta. 1154+00.00 - SHEET 2D-18

NOTE: DRIVEWAY RADII = 10'
UNLESS SHOWN OTHERWISE

FOR -L- PLAN SEE SHEET 28
FOR TMP SEE SHEET TMP-18G

REVISIONS

8/17/99

14-MAR-2021 09:11
I:\VAP\2021\09\11\59866B_Rdy_psh_2D-17.dgn