

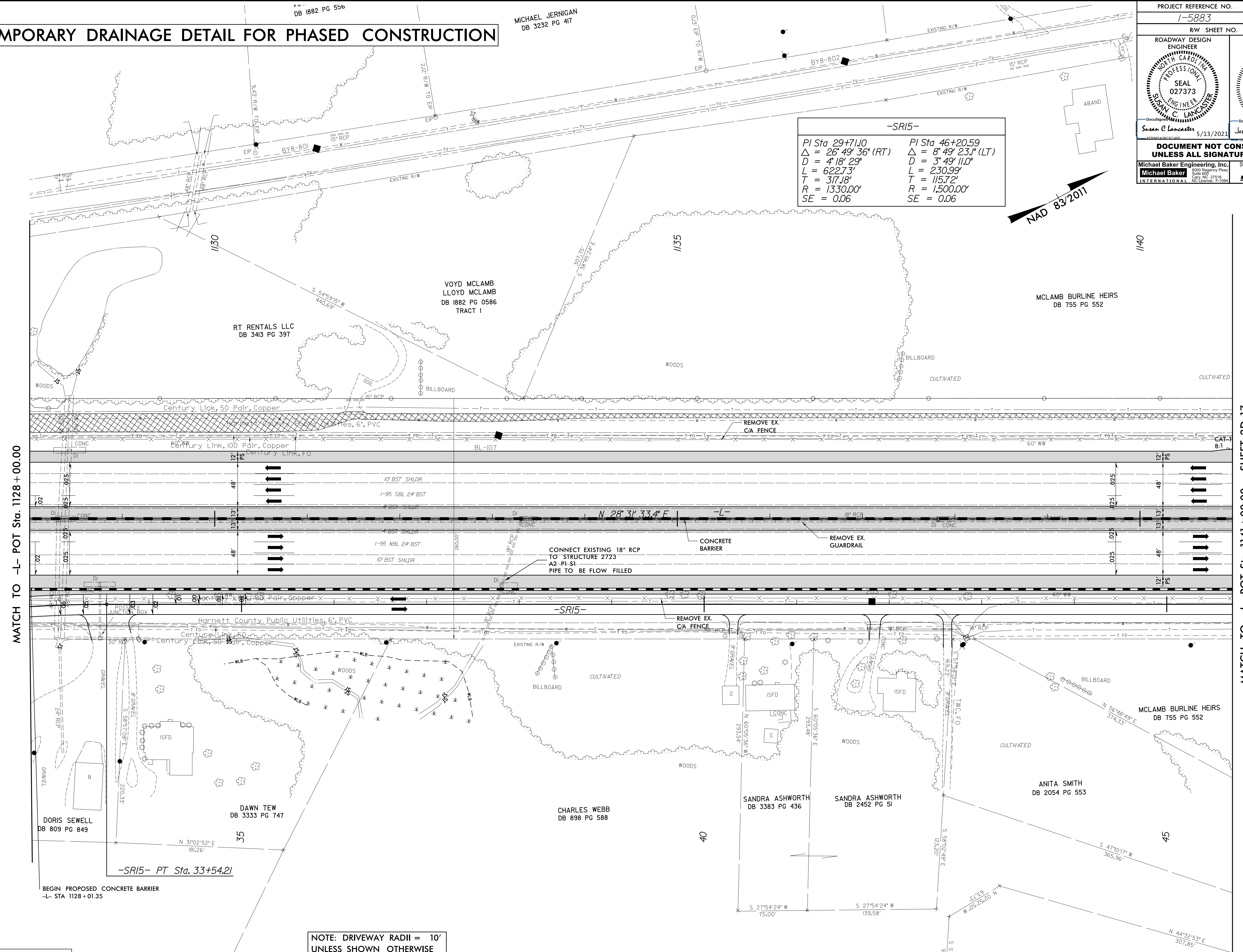
8/17/99

TEMPORARY DRAINAGE DETAIL FOR PHASED CONSTRUCTION

PROJECT REFERENCE NO. 1-5883		SHEET NO. 2D-16	
RW SHEET NO.			
ROADWAY DESIGN ENGINEER SUNGATE DESIGN GROUP, P.A. SEAL 027373 SUSAN C. LANCASTER 5/13/2021		HYDRAULICS ENGINEER SUNGATE DESIGN GROUP, P.A. SEAL 26971 JOSHUA G. DALTON 5/13/2021	
DOCUMENT NOT CONSIDERED FINAL UNLESS ALL SIGNATURES COMPLETED			
Michael Baker Engineering, Inc. INTERNATIONAL		SUNGATE DESIGN GROUP, P.A.	

-SRI5-

PI Sta 29+71.10	PI Sta 46+20.59
$\Delta = 26^{\circ}49'36"$ (RT)	$\Delta = 8^{\circ}49'23"$ (LT)
$D = 418'29"$	$D = 3^{\circ}49'11.0"$
$L = 622.73'$	$L = 230.99'$
$T = 317.18'$	$T = 115.72'$
$R = 1330.00'$	$R = 1500.00'$
$SE = 0.06$	$SE = 0.06$



REVISIONS

MATCH TO -L- POT Sta. 1128 + 00.00

MATCH TO -L- POT Sta. 1141 + 00.00 - SHEET 2D-17

11-MAR-2021 09:11
I:\VAR\2021\09\11\1-59866B_Rdy_psh_2D-16.dgn

FOR -L- PLAN SEE SHEET 27
FOR TMP SEE SHEET TMP-17F

NOTE: DRIVEWAY RADII = 10'
UNLESS SHOWN OTHERWISE