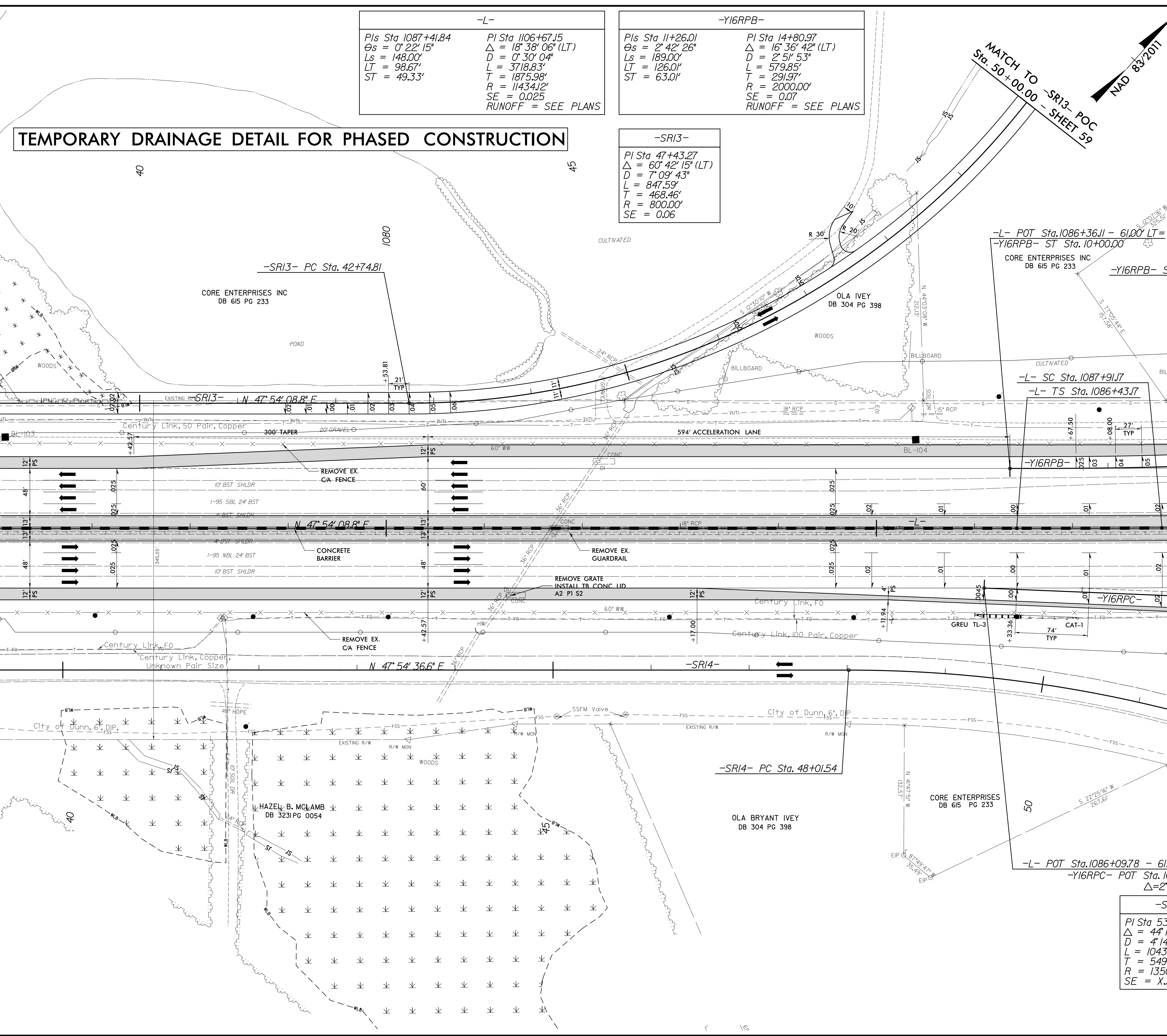


PROJECT REFERENCE NO. 1-5883	SHEET NO. 2D-14
RW SHEET NO.	
ROADWAY DESIGN ENGINEER SUNGATE DESIGN GROUP, P.A. SEAL 027373 SUNGATE DESIGN GROUP, P.A. SUNGATE DESIGN GROUP, P.A.	HYDRAULICS ENGINEER SUNGATE DESIGN GROUP, P.A. SEAL 26971 SUNGATE DESIGN GROUP, P.A. SUNGATE DESIGN GROUP, P.A.
Susan C. Lancaster 5/13/2021	Joshua G. Dalton 5/13/2021
DOCUMENT NOT CONSIDERED FINAL UNLESS ALL SIGNATURES COMPLETED	
Michael Baker Engineering, Inc. INTERNATIONAL	SUNGATE DESIGN GROUP, P.A.



**-L-**

PIs Sta 1087+41.84 θs = 0° 22' 15" Ls = 148.00' LT = 98.67' ST = 49.33'	PI Sta 1106+67.15 Δ = 18° 38' 06" (LT) D = 0° 30' 04" L = 3718.83' T = 1875.98' R = 11434.12' SE = 0.025 RUNOFF = SEE PLANS
---	--

**-Y16RPB-**

PIs Sta 11+26.01 θs = 2° 42' 26" Ls = 189.00' LT = 126.01' ST = 63.01'	PI Sta 14+80.97 Δ = 16° 36' 42" (LT) D = 2° 51' 53" L = 579.85' T = 291.97' R = 2000.00' SE = 0.07 RUNOFF = SEE PLANS
--	--

**-SRI3-**

PI Sta 47+43.27 Δ = 60° 42' 15" (LT) D = 7° 09' 43" L = 847.59' T = 468.46' R = 800.00' SE = 0.06
---

**-SRI4-**

PI Sta 53+50.93 Δ = 44° 17' 18" (RT) D = 4° 14' 39" L = 1043.52' T = 549.39' R = 1350.00' SE = X.XX
---

NOTE: DRIVEWAY RADII = 10'  
UNLESS SHOWN OTHERWISE

FOR -L- PLAN SEE SHEET 24  
FOR TMP SEE SHEET TMP-18A

REVISIONS

MATCH TO -L- POT Sta. 1076 + 00.00 - SHEET 2D-13

MATCH TO -L- POC Sta. 1089 + 00.00 - SHEET 2D-15

8/17/99

11-MAR-2021 09:11  
I:\VARS\2021\09\11\1-59868-Rdy\_psh\_2D-14.dgn