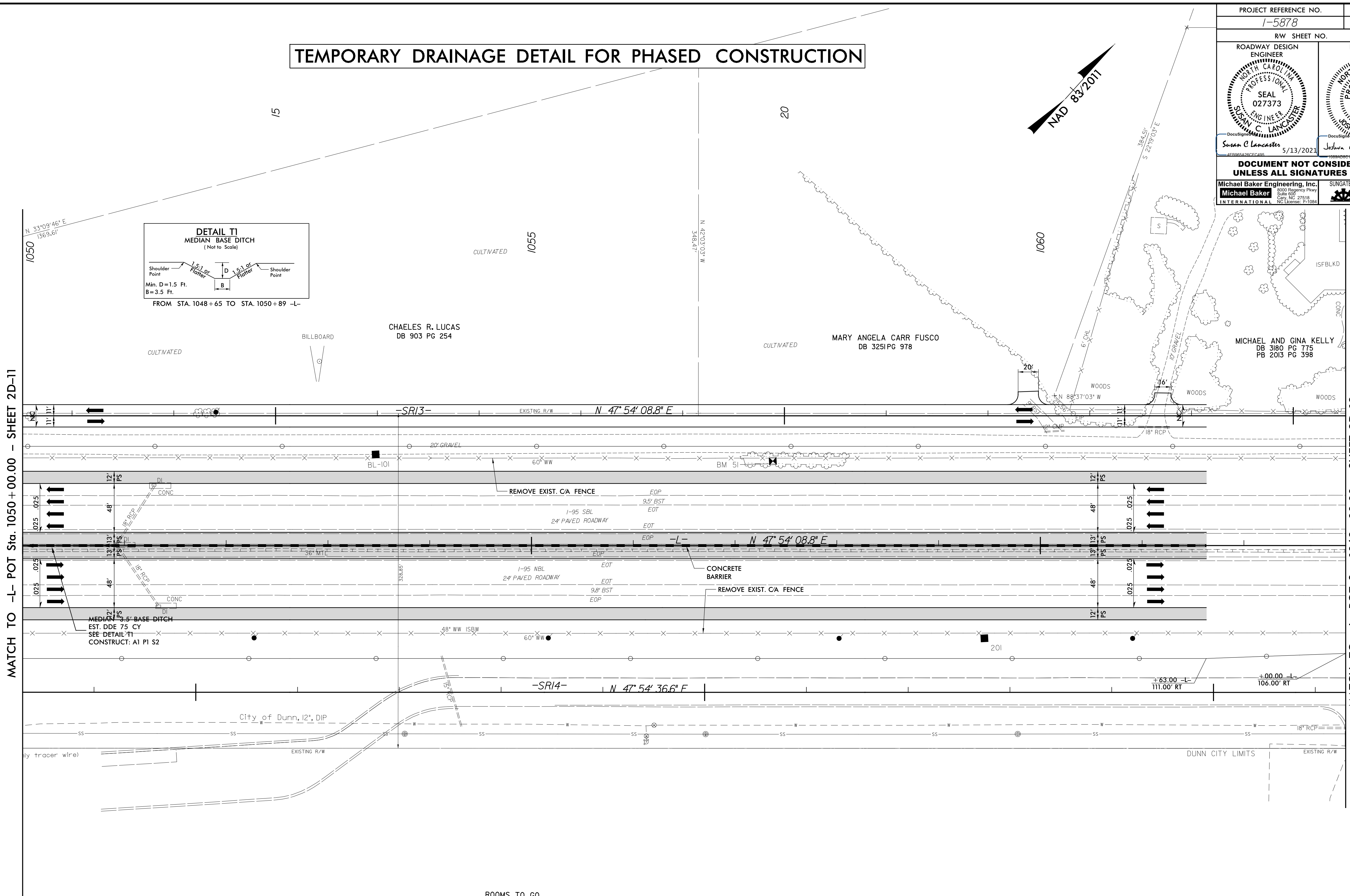
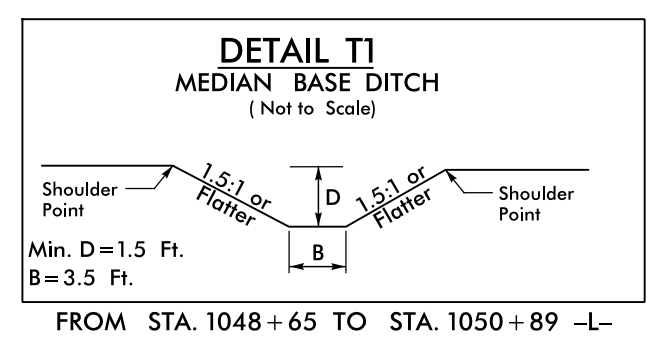


5/14/99

TEMPORARY DRAINAGE DETAIL FOR PHASED CONSTRUCTION

PROJECT REFERENCE NO. 1-5878		SHEET NO. 2D-12	
RW SHEET NO.			
ROADWAY DESIGN ENGINEER SUSAN C. LANCASTER SEAL 027373 NORTH CAROLINA PROFESSIONAL ENGINEER		HYDRAULICS ENGINEER JOSHUA G. DALTON SEAL 26971 NORTH CAROLINA PROFESSIONAL ENGINEER	
Susan C. Lancaster 5/13/2021		Joshua G. Dalton 5/13/2021	
DOCUMENT NOT CONSIDERED FINAL UNLESS ALL SIGNATURES COMPLETED			
Michael Baker Engineering, Inc. INTERNATIONAL		SUNGATE DESIGN GROUP, P.A.	



REVISIONS

MATCH TO -L- POT Sta. 1050+00.00 - SHEET 2D-11

MATCH TO -L- POT Sta. 1063+00.00 - SHEET 2D-13
END TIP I-5878 /BEGIN TIP I-5883

ROOMS TO GO
DISTRIBUTION COMPANY, LLC
DB 380 PG 372
PB 2014 PG 97

R:\P\11-MAR-2021\0311-59866B-Rdy.psh-2D-12.dgn

FOR -L- PLAN SEE SHEET 22
FOR TMP SEE SHEET TMP-51 AND TMP-9D