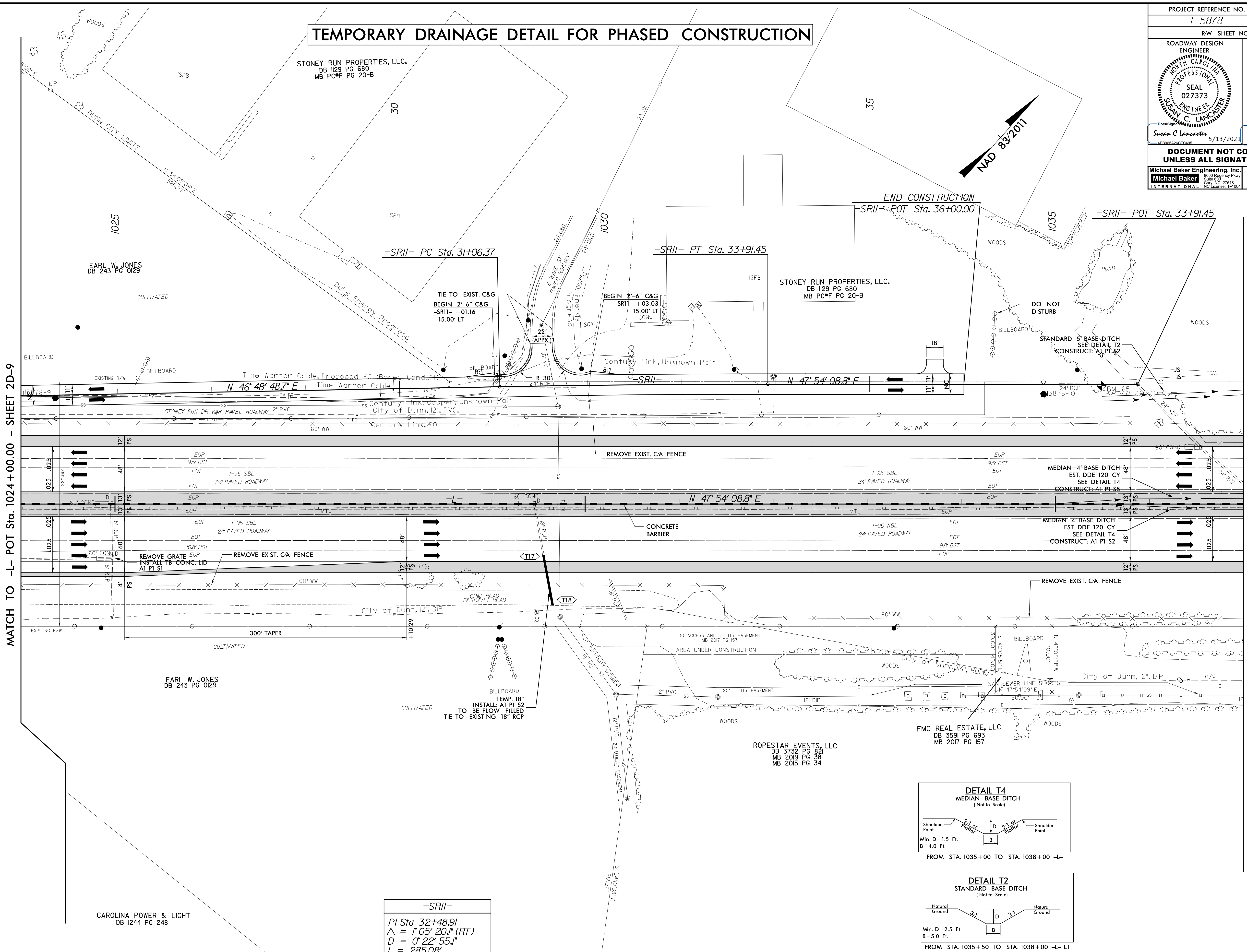


PROJECT REFERENCE NO. 1-5878	SHEET NO. 2D-10
RW SHEET NO.	
ROADWAY DESIGN ENGINEER SUSAN C LANCASTER SEAL 027373 NORTH CAROLINA PROFESSIONAL ENGINEER	HYDRAULICS ENGINEER JOSHUA G DALTON SEAL 26971 NORTH CAROLINA PROFESSIONAL ENGINEER
Susan C Lancaster 5/13/2021	Joshua G Dalton 5/13/2021
<b>DOCUMENT NOT CONSIDERED FINAL UNLESS ALL SIGNATURES COMPLETED</b>	
Michael Baker Engineering, Inc. INTERNATIONAL	SUNGATE DESIGN GROUP, P.A.

# TEMPORARY DRAINAGE DETAIL FOR PHASED CONSTRUCTION

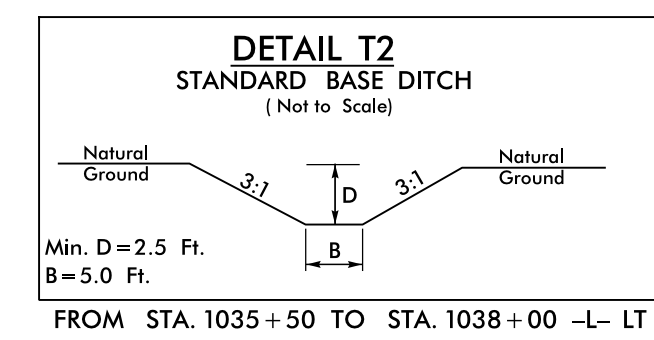
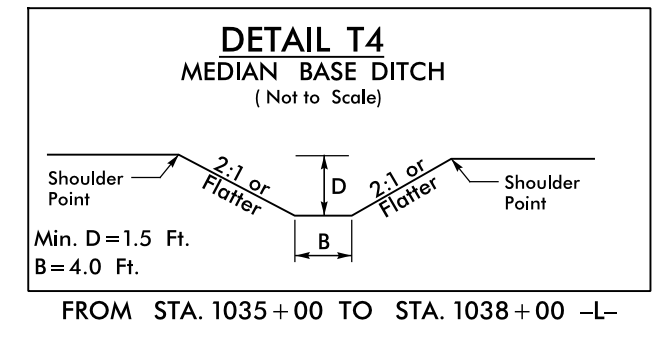


MATCH TO -L- POT Sta. 1024+00.00 - SHEET 2D-9

MATCH TO -L- POT Sta. 1037+00.00 - SHEET 2D-11

-SR11-

PI Sta 32+48.91  
 $\Delta = 1^{\circ}05'20.1''$  (RT)  
 $L = 0^{\circ}22'55.1''$   
 $T = 285.08'$   
 $T = 142.54'$   
 $R = 15,000.00'$



FOR -L- PLAN SEE SHEET 20  
 FOR -SR11- PLAN SEE SHEET 20  
 FOR TMP SEE SHEET TMP-5G 5H, 9B 9C.

11-MAR-2021 09:11:59 986B\_Rdy.psh\_2D-10.dgn  
 R:\33859\PROJECTS\1037-1038\1037-1038.dgn