

5/14/1999

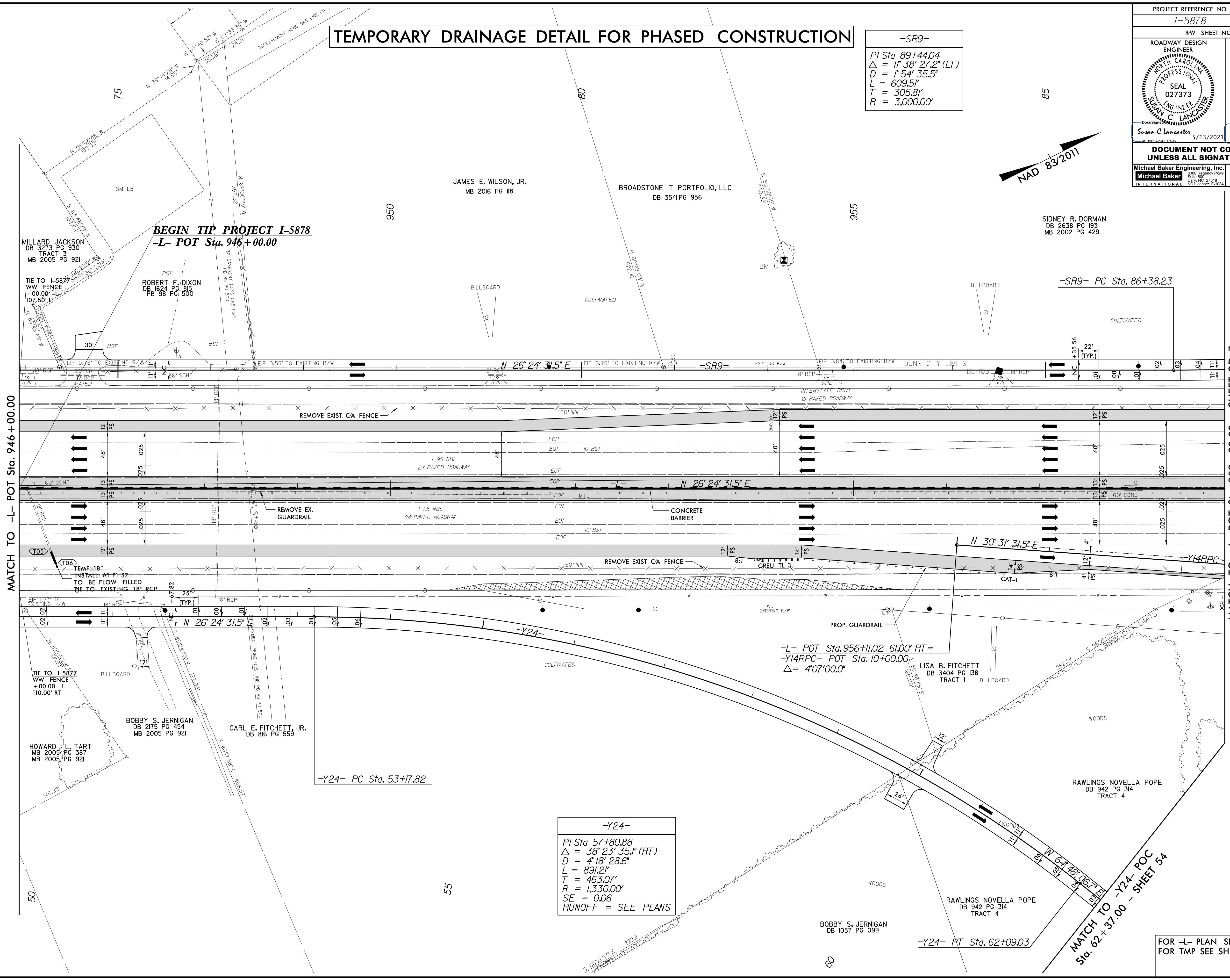
TEMPORARY DRAINAGE DETAIL FOR PHASED CONSTRUCTION

-SR9-

PI Sta 89+44.04
 $\Delta = 1^\circ 38' 27.2''$ (LT)
 $D = 1^\circ 54' 35.5''$
 $L = 609.51'$
 $T = 305.81'$
 $R = 3,000.00'$



PROJECT REFERENCE NO. 1-5878	SHEET NO. 2D-6
RW SHEET NO.	
ROADWAY DESIGN ENGINEER SUSAN C. LANCASTER Professional Seal 027373 5/13/2021	HYDRAULICS ENGINEER JOSHUA G. DALTON Professional Seal 26971 5/13/2021
DOCUMENT NOT CONSIDERED FINAL UNLESS ALL SIGNATURES COMPLETED	
Michael Baker Engineering, Inc. 1800 Regency Park Charlotte, NC 27518 NCE License: F-1034	SUNGATE DESIGN GROUP, P.A. 10000 SunGate Blvd Charlotte, NC 28217 NCE License: C-8899



-Y24-

PI Sta 57+80.88
 $\Delta = 38^\circ 23' 35.1''$ (RT)
 $D = 4^\circ 18' 28.6''$
 $L = 891.21'$
 $T = 463.07'$
 $R = 1,330.00'$
 $SE = 0.06$
 RUNOFF = SEE PLANS

MATCH TO -L- POT Sta. 946 + 00.00

MATCH TO -L- POT Sta. 959 + 00.00 - SHEET 2D-7

MATCH TO -Y24- POC Sta. 62 + 37.00 - SHEET 54

FOR -L- PLAN SEE SHEET 16
FOR TMP SEE SHEET TMP-5A

11-MAR-2021 09:11:59 9866B_Rdpl_psh_2D-6.dgn