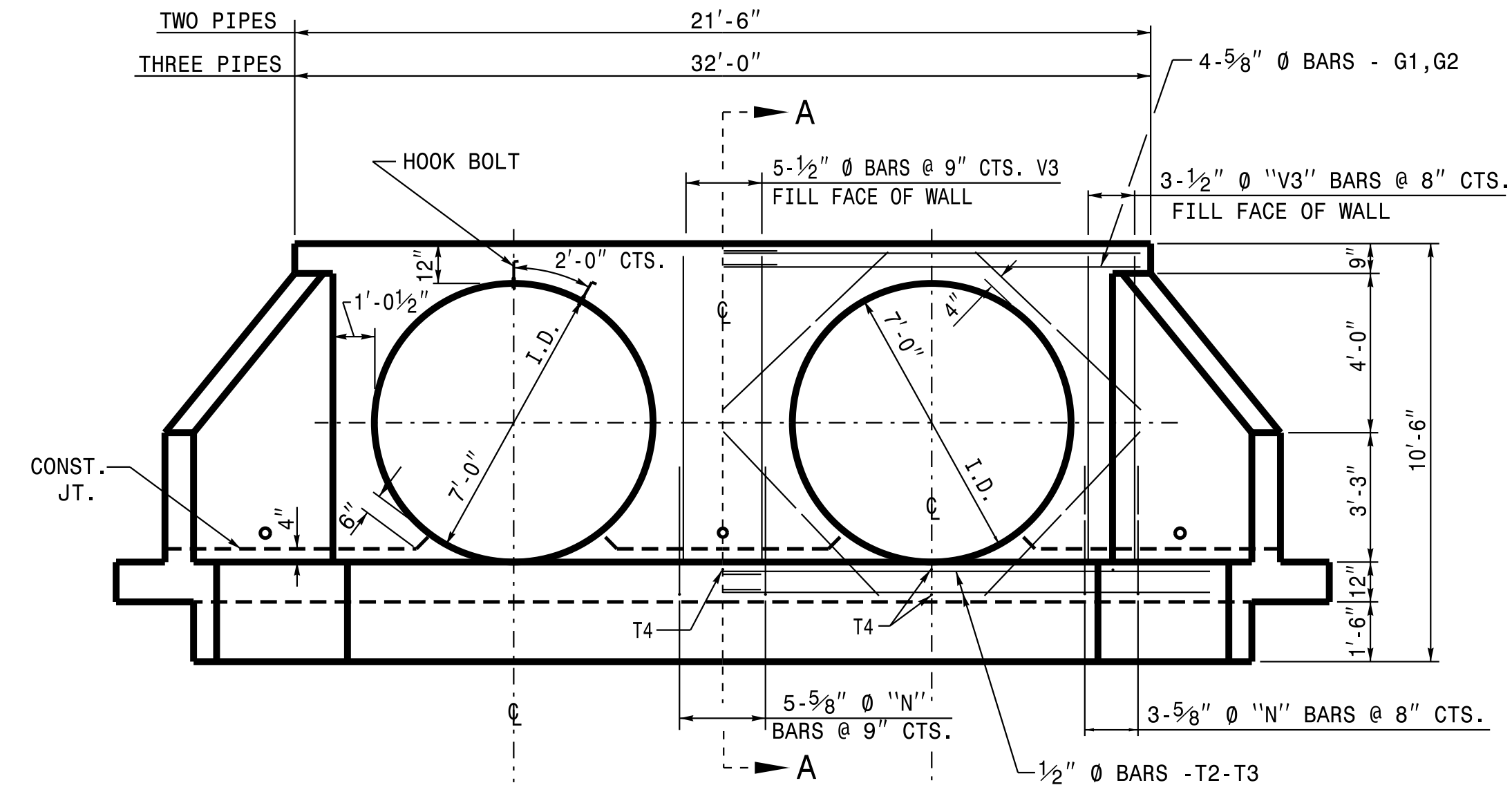
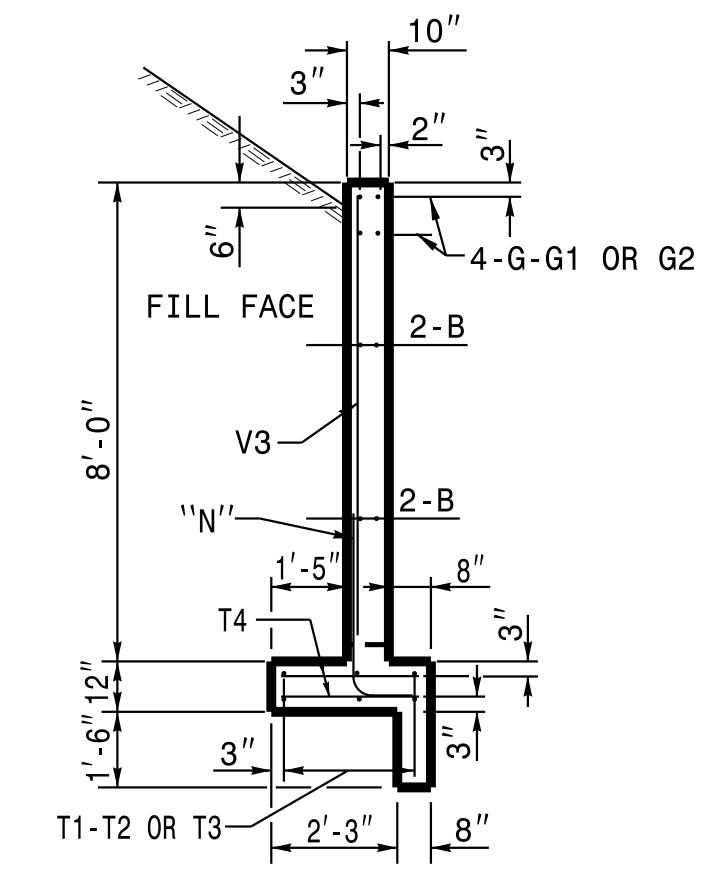


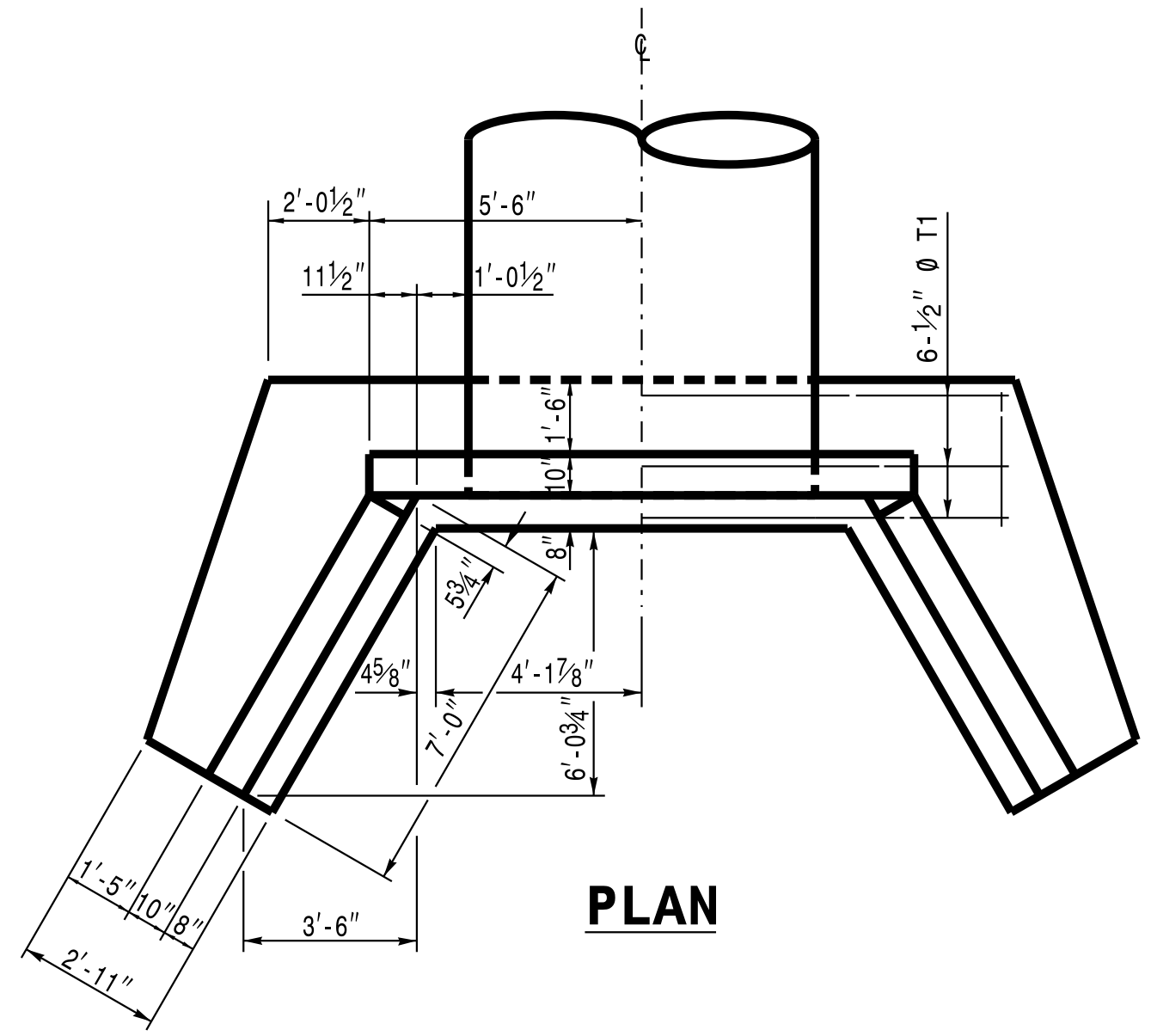
END ELEVATION



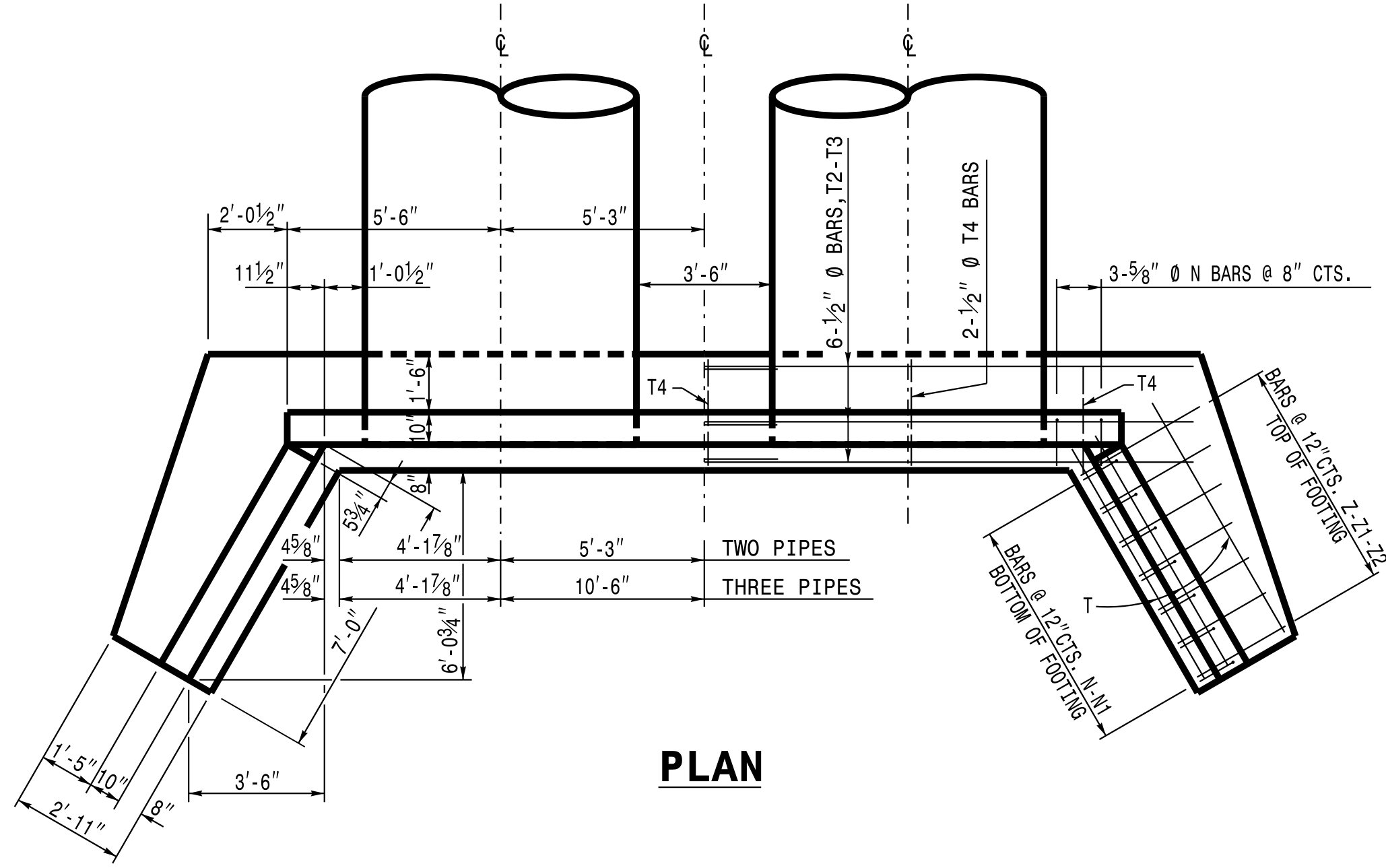
END ELEVATION



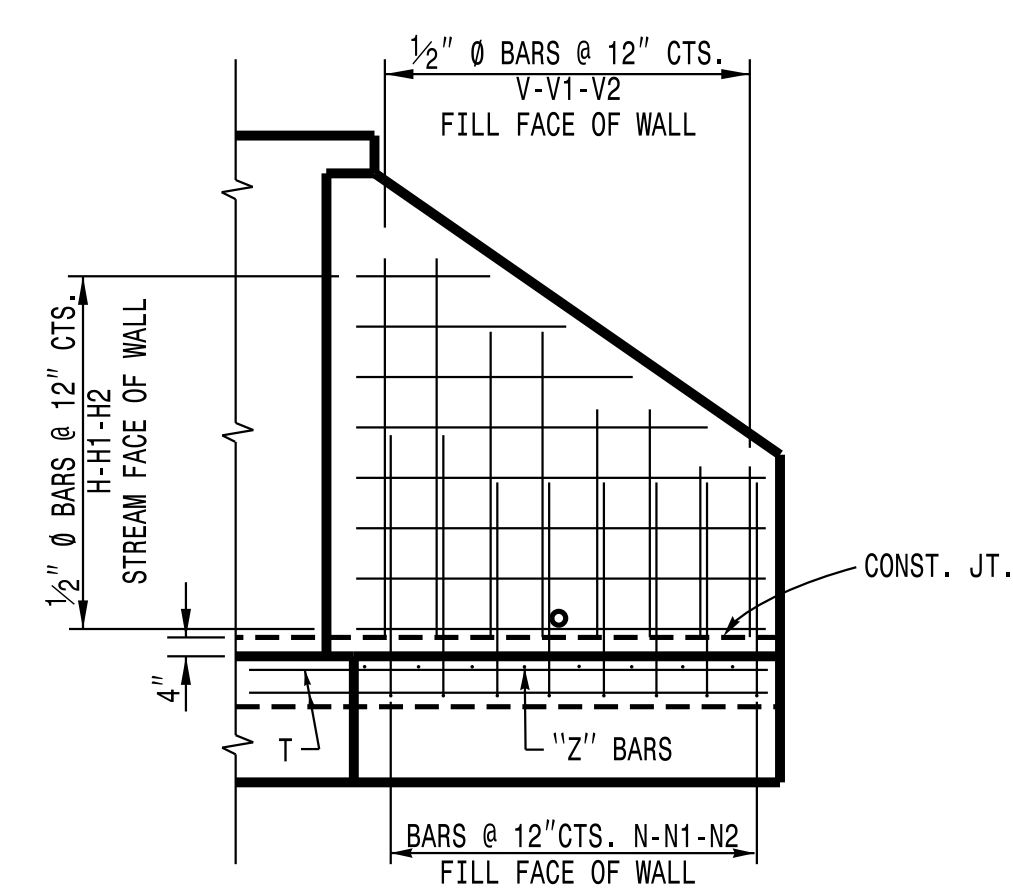
**SECTION A-A
FOR ALL ENDWALLS**



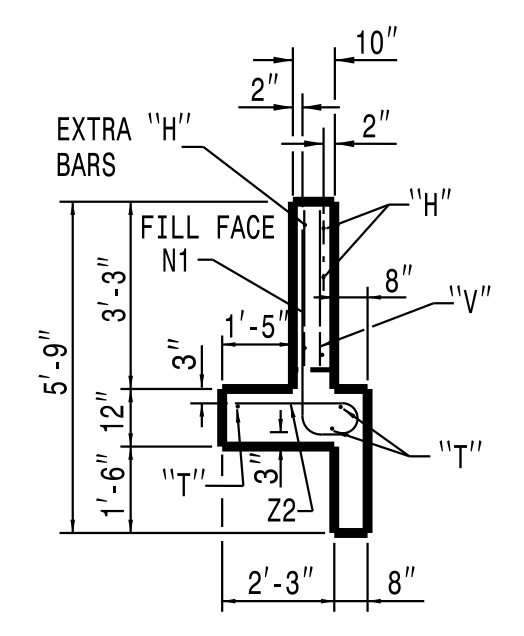
PLAN



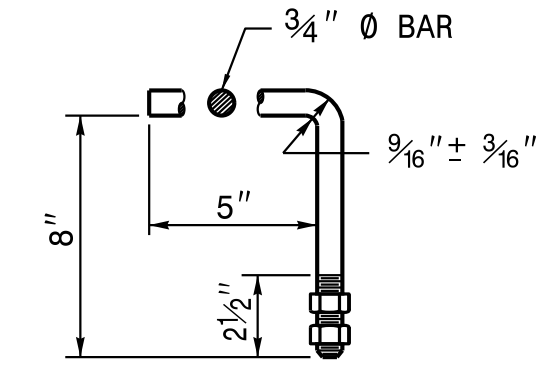
PLAN



**ELEVATION OF WING
SHOWING REINFORCEMENT**

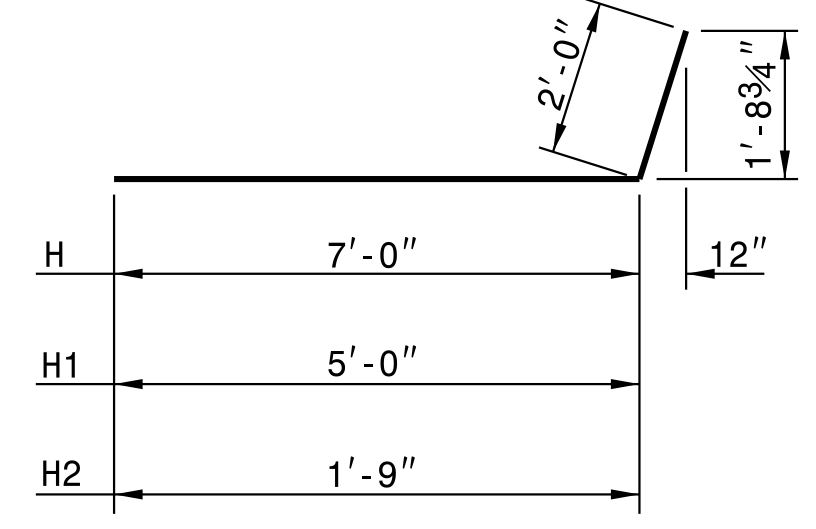


END OF WING

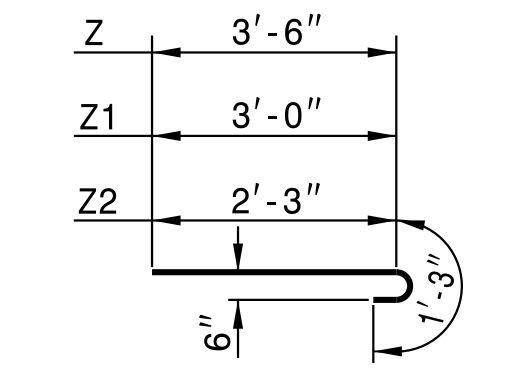


HOOK BOLT

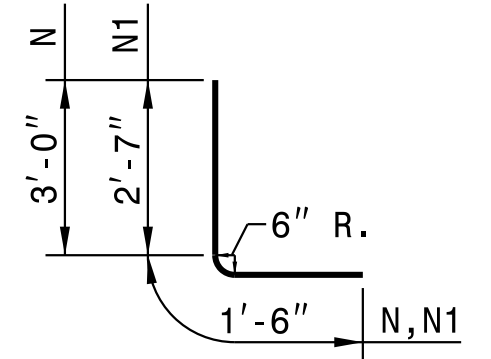
HOOK BOLTS (ANCHORS SHALL BE CONSTRUCTED AT 2'-0" CTS. ALONG THE CIRCUMFERENCE OF THE 7'-0" CSPA. THE HOOK BOLTS SHALL BE EMBEDDED IN THE CONCRETE ENDWALL 8" IN DEPTH. THE GALVANIZED 3/4" DIA. HOOK BOLTS MUST MEET ASTM A-307 OR ASTM A-836. BOTH BOLTS AND NUTS MUST BE IN ACCORDANCE WITH ASTM A-153 FOR GALVANIZING.



BARS H-H1-H2



BARS Z-Z1-Z2



BARS N-N1

NOTES:

- ALL CONCRETE TO BE CLASS "A".
- ALL REINFORCING STEEL SHALL BE ASTM A615-GRADE 60.
- ALL REINFORCING STEEL SHALL BE DEFORMED BARS. WHERE SPLICING OF REINFORCEMENT IS NECESSARY, BARS ARE TO BE LAPPED 45 DIAMETERS. ALL DIMENSIONS RELATIVE TO REINFORCEMENT ARE TO CENTERS OF BARS.
- THE FOOTING, CURTAIN WALL AND 4" OF WALL ARE TO BE POURED IN ONE OPERATION ALLOWING NO TIME FOR INITIAL SET TO TAKE PLACE BETWEEN THEM. THE REMAINING WALL SHALL THEN BE POURED IN ONE OPERATION.
- ALL EXPOSED CORNERS ARE TO BE CHAMFERED 1".
- 3" DIAMETER DRAINS SHALL BE PLACED IN WALL AS SHOWN AND BE 6" ABOVE NORMAL FLOW LINE.
- ALL MATERIAL AND WORKMANSHIP AS PER N.C. DEPARTMENT OF TRANSPORTATION STANDARD SPECIFICATIONS.

BILL OF MATERIAL FOR ONE ENDWALL

REINFORCING STEEL		1 PIPE	2 PIPES	3 PIPES				
BAR	SIZE	LENGTH	NO.	WEIGHT	NO.	WEIGHT	NO.	WEIGHT
B	#4	6'-0"	8	32	16	64	24	96
G	#5	10'-9"	4	45	-	-	-	-
G1	#5	11'-9"	-	-	8	98	-	-
G2	#5	17'-0"	-	-	-	-	8	142
H	#4	9'-0"	10	60	10	60	10	60
H1	#4	7'-0"	6	28	6	28	6	28
H2	#4	3'-9"	4	10	4	10	4	10
N	#5	4'-6"	10	47	15	70	20	94
N1	#4	4'-1"	10	27	10	27	10	27
T	#4	6'-6"	6	26	6	26	6	26
T1	#4	15'-0"	6	60	-	-	-	-
T2	#4	13'-9"	-	-	12	110	-	-
T3	#4	19'-0"	-	-	-	-	12	152
T4	#4	2'-9"	4	7	7	13	10	18
V	#4	5'-9"	6	23	6	23	6	23
V1	#4	4'-6"	6	18	6	18	6	18
V2	#4	2'-9"	8	15	8	15	8	15
V3	#4	7'-6"	6	30	11	55	16	80
Z	#5	4'-9"	4	20	4	20	4	20
Z1	#4	4'-3"	4	11	4	11	4	11
Z2	#4	3'-6"	6	14	6	14	6	14
TOTAL REINF. STEEL (lbs.)				473		662		834
CLASS "A" CONC. (cu. yds.)				7.9		10.8		13.8

**CONTRACT STANDARDS & DEVELOPMENT UNIT
STANDARDS AND SPECIAL DESIGN**
Office 919-250-4128 FAX 919-250-4119

**DETAIL OF REINFORCED
CONCRETE ENDWALL FOR
84" DIAMETER PIPE - 90° SKEW**

ORIGINAL BY: R.S.WICKER DATE: 6-46
 MODIFIED BY: R.E.D.&T.S.S. DATE: 6-96 & 5-00
 CHECKED BY: DATE:
 FILE SPEC.: details/nbritt/english/hydro/84_endwall_90sk.dgn