

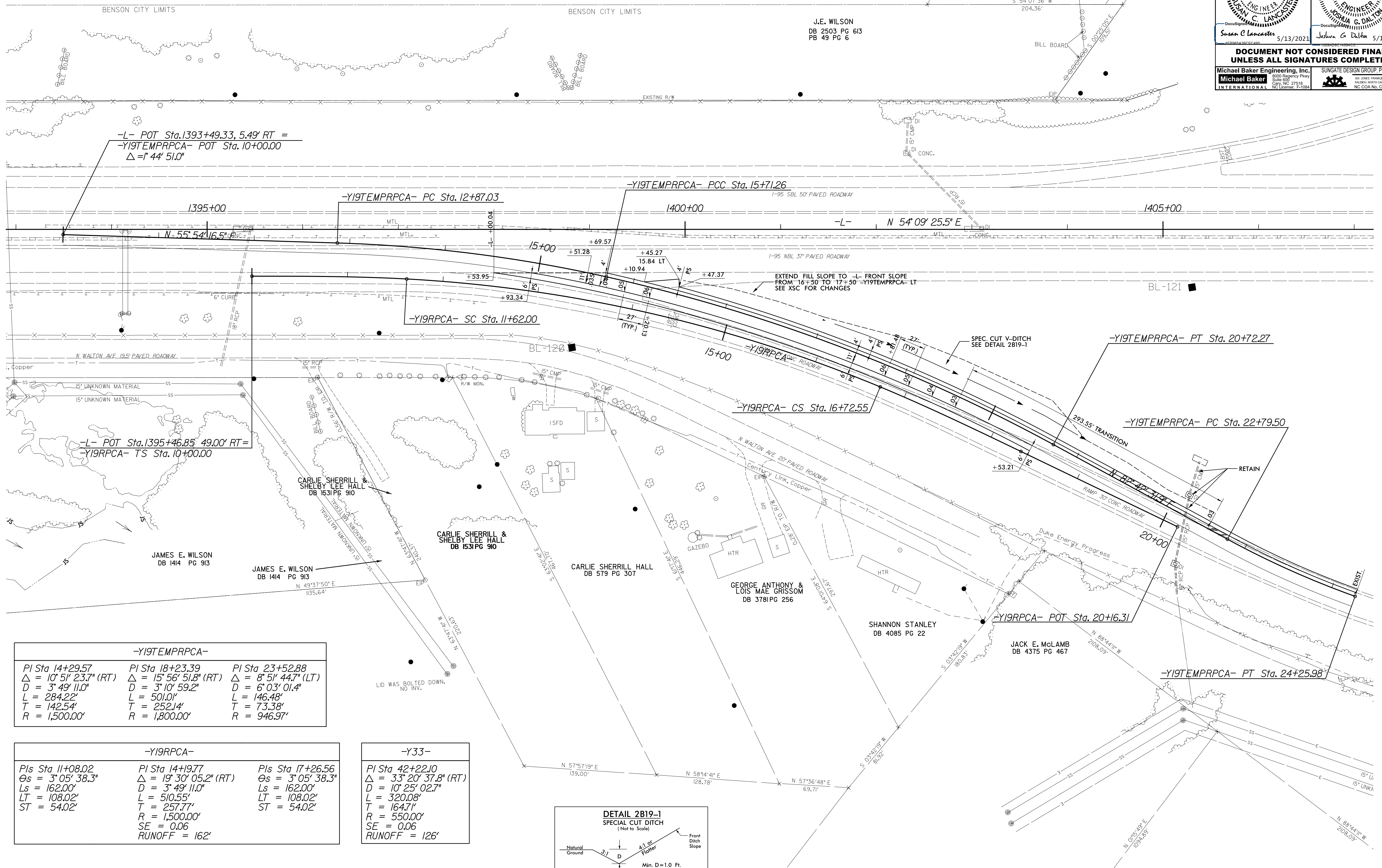
8/17/19

# DETAIL OF TEMPORARY ALIGNMENT -Y19TEMPRPCA-

J.E. WILSON  
DB 2503 PG 613  
PB 49 PG 6

J.E. WILSON  
DB 2503 PG 613  
PB 49 PG 6

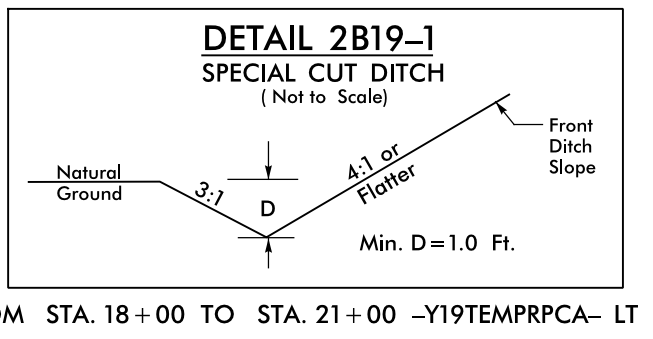
PROJECT REFERENCE NO. <b>1-5986B</b>		SHEET NO. <b>2B-19</b>	
RW SHEET NO.			
ROADWAY DESIGN ENGINEER		HYDRAULICS ENGINEER	
Susan C. Lancaster 5/13/2021		Joshua G. Dalton 5/13/2021	
<b>DOCUMENT NOT CONSIDERED FINAL UNLESS ALL SIGNATURES COMPLETED</b>			
Michael Baker Engineering, Inc. 1000 Regency Park Suite 600 Cary, NC 27518 NC License: P-1084		SUNGATE DESIGN GROUP, P.A. 602 JONES FRANKER ROAD RALEIGH, NORTH CAROLINA 27604 NC COA No. C-4890	



-Y19TEMPRPCA-		
PI Sta 14+29.57	PI Sta 18+23.39	PI Sta 23+52.88
$\Delta = 10' 51" 23.7" (RT)$	$\Delta = 15' 56" 51.8" (RT)$	$\Delta = 8' 51" 44.7" (LT)$
$D = 3' 49" 11.0"$	$D = 3' 10" 59.2"$	$D = 6' 03" 01.4"$
$L = 284.22'$	$L = 501.01'$	$L = 146.48'$
$T = 142.54'$	$T = 252.14'$	$T = 73.38'$
$R = 1,500.00'$	$R = 1,800.00'$	$R = 946.97'$

-Y19RPCA-		
PIs Sta 11+08.02	PI Sta 14+19.77	PIs Sta 17+26.56
$\Theta_s = 3' 05" 38.3"$	$\Delta = 19' 30" 05.2" (RT)$	$\Theta_s = 3' 05" 38.3"$
$L_s = 162.00'$	$D = 3' 49" 11.0"$	$L_s = 162.00'$
$LT = 108.02'$	$L = 510.55'$	$LT = 108.02'$
$ST = 54.02'$	$T = 257.77'$	$ST = 54.02'$
	$R = 1,500.00'$	
	$SE = 0.06$	
	$RUNOFF = 162'$	

-Y33-
PI Sta 42+22.10
$\Delta = 33' 20" 37.8" (RT)$
$D = 10' 25" 02.7"$
$L = 320.08'$
$T = 164.71'$
$R = 550.00'$
$SE = 0.06$
$RUNOFF = 126'$



FROM STA. 18+00 TO STA. 21+00 -Y19TEMPRPCA- LT

REVISIONS

11-MAR-2021 09:11:11 I:\1-5986B-Rdy\_PSH-2B-19-TC.dgn

FOR -L- PROFILE SEE SHEETS 88 AND 89  
FOR -Y19TEMPRPCA- PROFILE SEE SHEET 2B-21  
SEE TMP PLANS AREA 5, PHASES IV & V