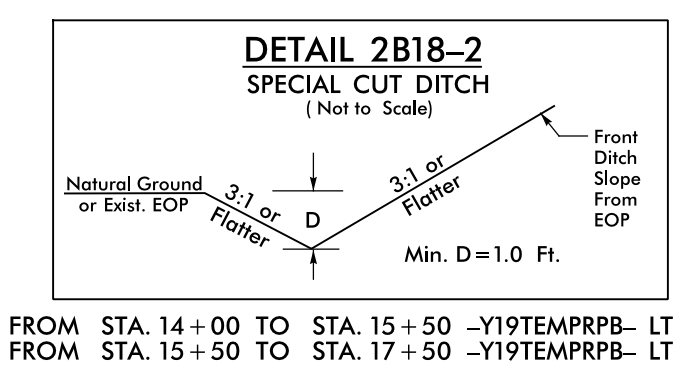
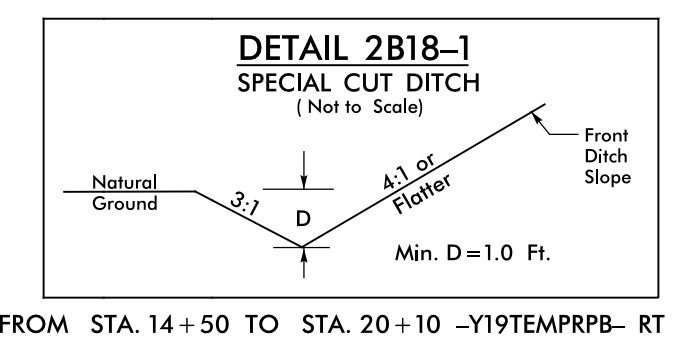


DETAIL OF TEMPORARY ALIGNMENT -Y19TEMPRPB-

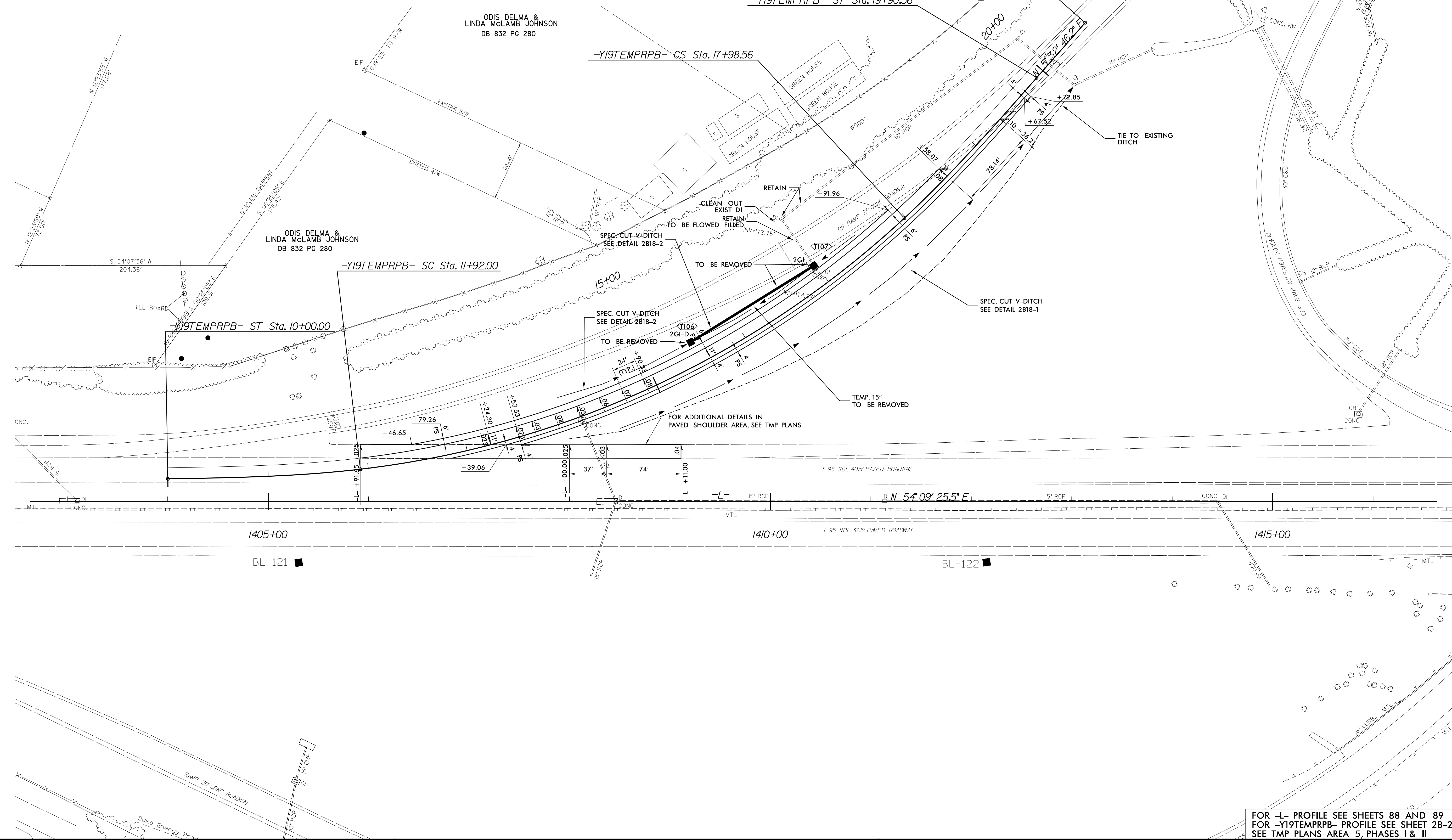
-Y19TEMPRPB-		
PIs Sta 11+28.07	PI Sta 15+05.79	PIs Sta 18+62.63
$\theta_s = 5^\circ 43' 46.5''$	$\Delta = 36^\circ 12' 06.0''$ (LT)	$\theta_s = 5^\circ 43' 46.5''$
$L_s = 192.00'$	$D = 5^\circ 58' 05.9''$	$L_s = 192.00'$
$LT = 128.07'$	$L = 606.56'$	$LT = 128.07'$
$ST = 64.06'$	$T = 313.79'$	$ST = 64.06'$
	$R = 960.00'$	



END CONSTRUCTION
 -Y19TEMPRPB- POT Sta. 20+63.74 =
 -EY1_RPB- POT Sta. 21+26.68, 9' LT.
 $\Delta = 3^\circ 00' 00.0''$

PROJECT REFERENCE NO. 1-5986B	SHEET NO. 2B-18
RW SHEET NO.	
ROADWAY DESIGN ENGINEER SUNNY C. LANCASTER SEAL 027373 SUNNY C. LANCASTER REGISTERED PROFESSIONAL ENGINEER 5/13/2021	HYDRAULICS ENGINEER JOSHUA G. DALTON SEAL 26971 JOSHUA G. DALTON REGISTERED PROFESSIONAL ENGINEER 5/13/2021
DOCUMENT NOT CONSIDERED FINAL UNLESS ALL SIGNATURES COMPLETED	
Michael Baker Engineering, Inc. INTERNATIONAL	SUNGATE DESIGN GROUP, P.A. INTERNATIONAL

REVISIONS



FOR -L- PROFILE SEE SHEETS 88 AND 89
 FOR -Y19TEMPRPB- PROFILE SEE SHEET 2B-21
 SEE TMP PLANS AREA 5, PHASES I & II

03-APR-2021 07:17
 1-5986B_Rdy_PSH_2B-18-TC.dgn
 SUNNY C. LANCASTER