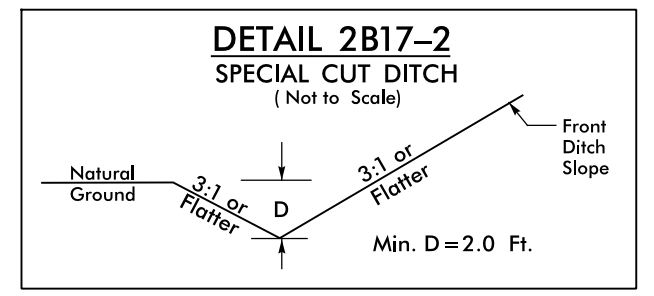
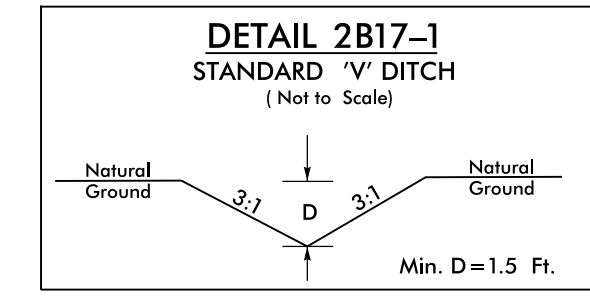


PROJECT REFERENCE NO. I-5878		SHEET NO. 2B-17	
RW SHEET NO.		HYDRAULICS ENGINEER	
ROADWAY DESIGN ENGINEER		SEAL 26971	
Susan C. Lancaster 5/13/2021		Joshua G. Dalton 5/13/2021	
DOCUMENT NOT CONSIDERED FINAL UNLESS ALL SIGNATURES COMPLETED			
Michael Baker Engineering, Inc. 1000 Rindgeberry Place Cary, NC 27513 INTERNATIONAL		SUNGATE DESIGN GROUP, P.A. 200 ZONES FRANKLIN ROAD RALEIGH, NORTH CAROLINA 27601 NC COA No. C-48890	

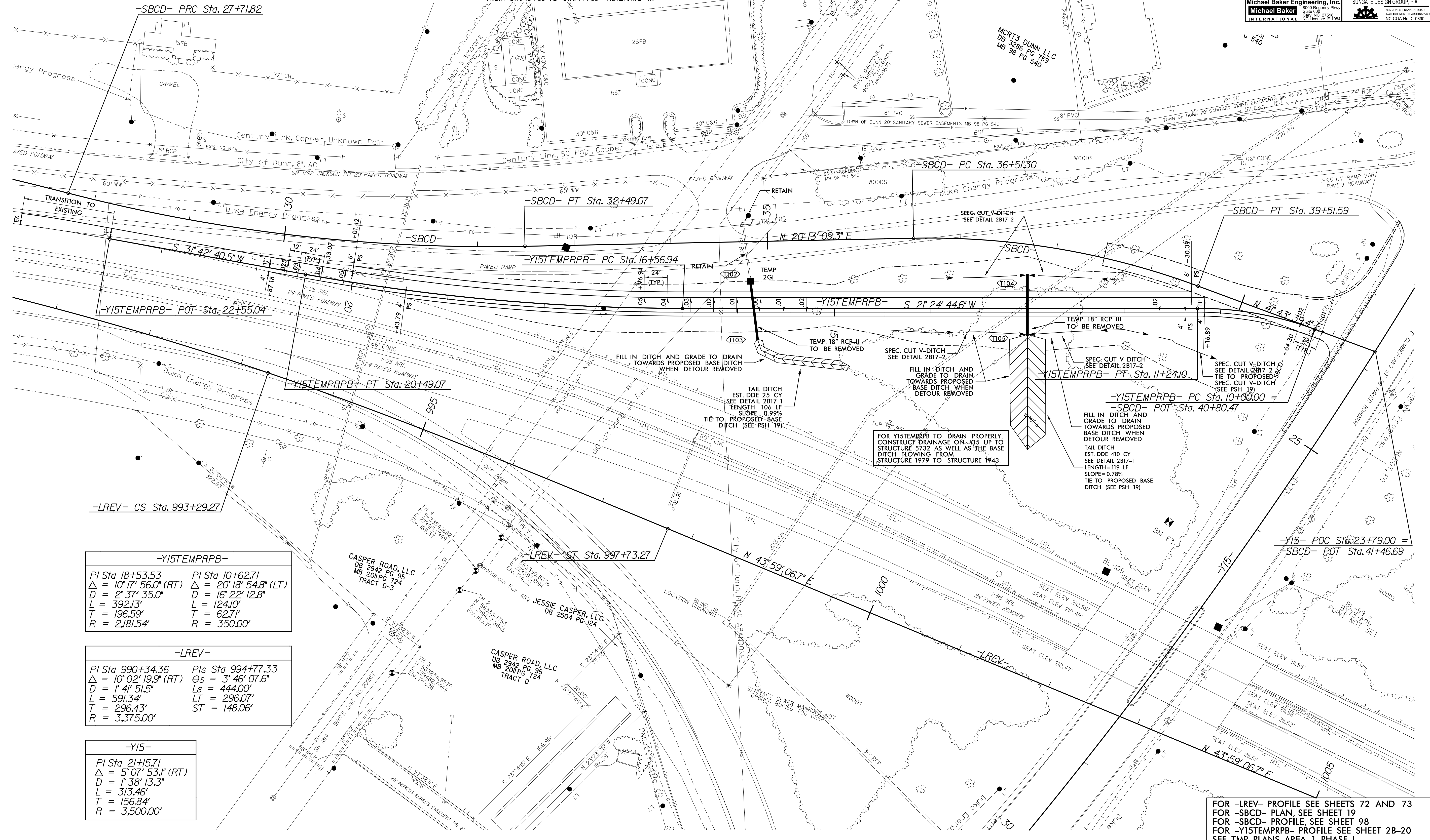
DETAIL OF TEMPORARY ALIGNMENT -Y15TEMPRPB-

-SBCD-

PI Sta 25+73.87 Δ = 9° 02' 24.4" (RT) D = 3' 22' 13.2" L = 268.23' T = 134.39' R = 1,700.00'	PI Sta 31+44.59 Δ = 15° 43' 21.5" (LT) D = 3' 22' 13.2" L = 466.50' T = 234.72' R = 1,700.00'
---	--



FROM STA. 11+00 TO STA. 12+00 -Y15TEMPRPB- LT
FROM STA. 12+00 TO STA. 13+00 -Y15TEMPRPB- LT
FROM STA. 12+00 TO STA. 13+00 -Y15TEMPRPB- RT
FROM STA. 13+00 TO STA. 14+50 -Y15TEMPRPB- LT
FROM STA. 13+00 TO STA. 14+00 -Y15TEMPRPB- RT



-Y15TEMPRPB-

PI Sta 18+53.53 Δ = 10° 17' 56.0" (RT) D = 2' 37' 35.0" L = 392.13' T = 196.59' R = 2,181.54'	PI Sta 10+62.71 Δ = 20° 18' 54.8" (LT) D = 16' 22' 12.8" L = 124.10' T = 62.71' R = 350.00'
--	--

-LREV-

PI Sta 990+34.36 Δ = 10° 02' 19.9" (RT) D = 1' 41' 51.5" L = 591.34' T = 296.43' R = 3,375.00'	PIs Sta 994+77.33 Δs = 3' 46' 07.6" Ls = 444.00' LT = 296.07' ST = 148.06'
---	--

-Y15-

PI Sta 21+15.71 Δ = 5° 07' 53.1" (RT) D = 1' 38' 13.3" L = 313.46' T = 156.84' R = 3,500.00'

FOR -LREV- PROFILE SEE SHEETS 72 AND 73
FOR -SBCD- PLAN, SEE SHEET 19
FOR -SBCD- PROFILE, SEE SHEET 98
FOR -Y15TEMPRPB- PROFILE SEE SHEET 2B-20
SEE TMP PLANS AREA 1, PHASE I

REVISIONS

I:\MAR-2021\09\11\I-5878\2B-17-TC.dgn