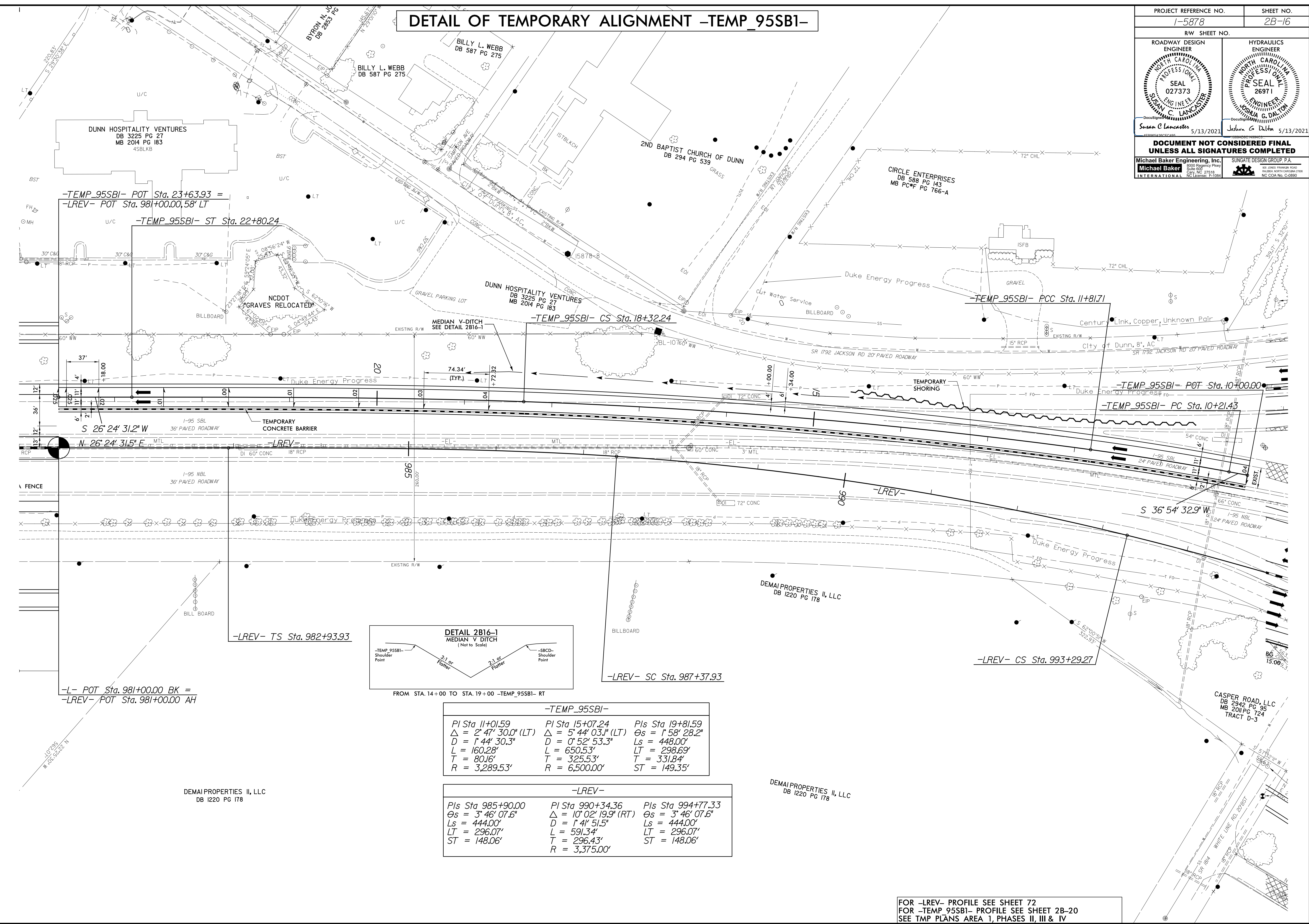


8/17/19

DETAIL OF TEMPORARY ALIGNMENT -TEMP_95SB1-

PROJECT REFERENCE NO. I-5878		SHEET NO. 2B-16	
RW SHEET NO.			
ROADWAY DESIGN ENGINEER SUNGATE DESIGN GROUP, P.A. SEAL 027373 SUNNY C. LANCASTER		HYDRAULICS ENGINEER SUNGATE DESIGN GROUP, P.A. SEAL 26971 JOSHUA G. DALTON	
SUNNY C. LANCASTER 5/13/2021		JOSHUA G. DALTON 5/13/2021	
DOCUMENT NOT CONSIDERED FINAL UNLESS ALL SIGNATURES COMPLETED			
Michael Baker Engineering, Inc. 1000 Regency Park Suite 600 Dunn, NC 27834 Tel: 919.286.1100 Fax: 919.286.1101 www.mbakergroup.com		SUNGATE DESIGN GROUP, P.A. 602 ZONES FRANKLIN ROAD SUITE 200 DUNN, NC 27834 Tel: 919.286.1100 Fax: 919.286.1101 www.sungatedesign.com	



REVISIONS

-TEMP_95SB1- POT Sta. 23+63.93 =
-LREV- POT Sta. 981+00.00, 58' LT

-TEMP_95SB1- ST Sta. 22+80.24

-TEMP_95SB1- CS Sta. 18+32.24

-TEMP_95SB1- PCC Sta. 11+81.71

-TEMP_95SB1- POT Sta. 10+00.00

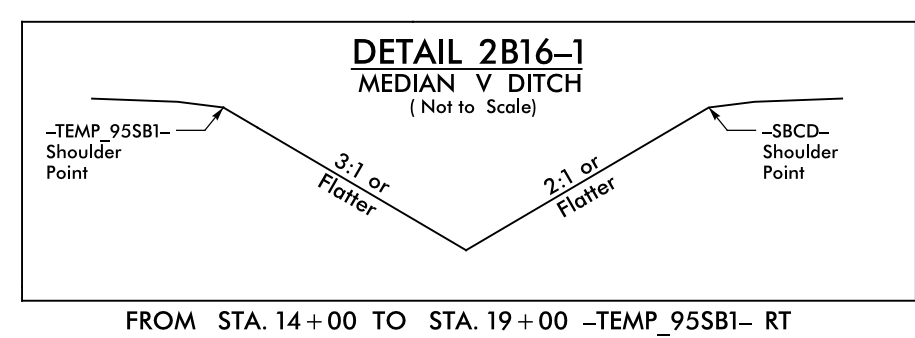
-TEMP_95SB1- PC Sta. 10+21.43

-LREV- TS Sta. 982+93.93

-LREV- SC Sta. 987+37.93

-LREV- CS Sta. 993+29.27

-L- POT Sta. 981+00.00 BK =
-LREV- POT Sta. 981+00.00 AH



-TEMP_95SB1-		
PI Sta 11+01.59	PI Sta 15+07.24	PIs Sta 19+81.59
$\Delta = 2^\circ 47' 30.0''$ (LT)	$\Delta = 5^\circ 44' 03.1''$ (LT)	$\Theta_s = 1^\circ 58' 28.2''$
$D = 1^\circ 44' 30.3''$	$D = 0^\circ 52' 53.3''$	$L_s = 448.00'$
$L = 160.28'$	$L = 650.53'$	$LT = 298.69'$
$T = 80.16'$	$T = 325.53'$	$T = 331.84'$
$R = 3,289.53'$	$R = 6,500.00'$	$ST = 149.35'$

-LREV-		
PIs Sta 985+90.00	PI Sta 990+34.36	PIs Sta 994+77.33
$\Theta_s = 3^\circ 46' 07.6''$	$\Delta = 10^\circ 02' 19.9''$ (RT)	$\Theta_s = 3^\circ 46' 07.6''$
$L_s = 444.00'$	$D = 1^\circ 41' 51.5''$	$L_s = 444.00'$
$LT = 296.07'$	$L = 591.34'$	$LT = 296.07'$
$ST = 148.06'$	$T = 296.43'$	$ST = 148.06'$
	$R = 3,375.00'$	

DEMAI PROPERTIES II, LLC
DB 1220 PG 178

DEMAI PROPERTIES II, LLC
DB 1220 PG 178

FOR -LREV- PROFILE SEE SHEET 72
FOR -TEMP_95SB1- PROFILE SEE SHEET 2B-20
SEE TMP PLANS AREA 1, PHASES II, III & IV

I:\MAR-2021\09\11-59866B-Rdy_PSH-2B-16-TC.dgn
 5/13/2021 10:58:33 AM
 SUNNY C. LANCASTER