

5/14/2021

05 MAY 2021 13:34 P:\5986B-Rd4-typ.dgn

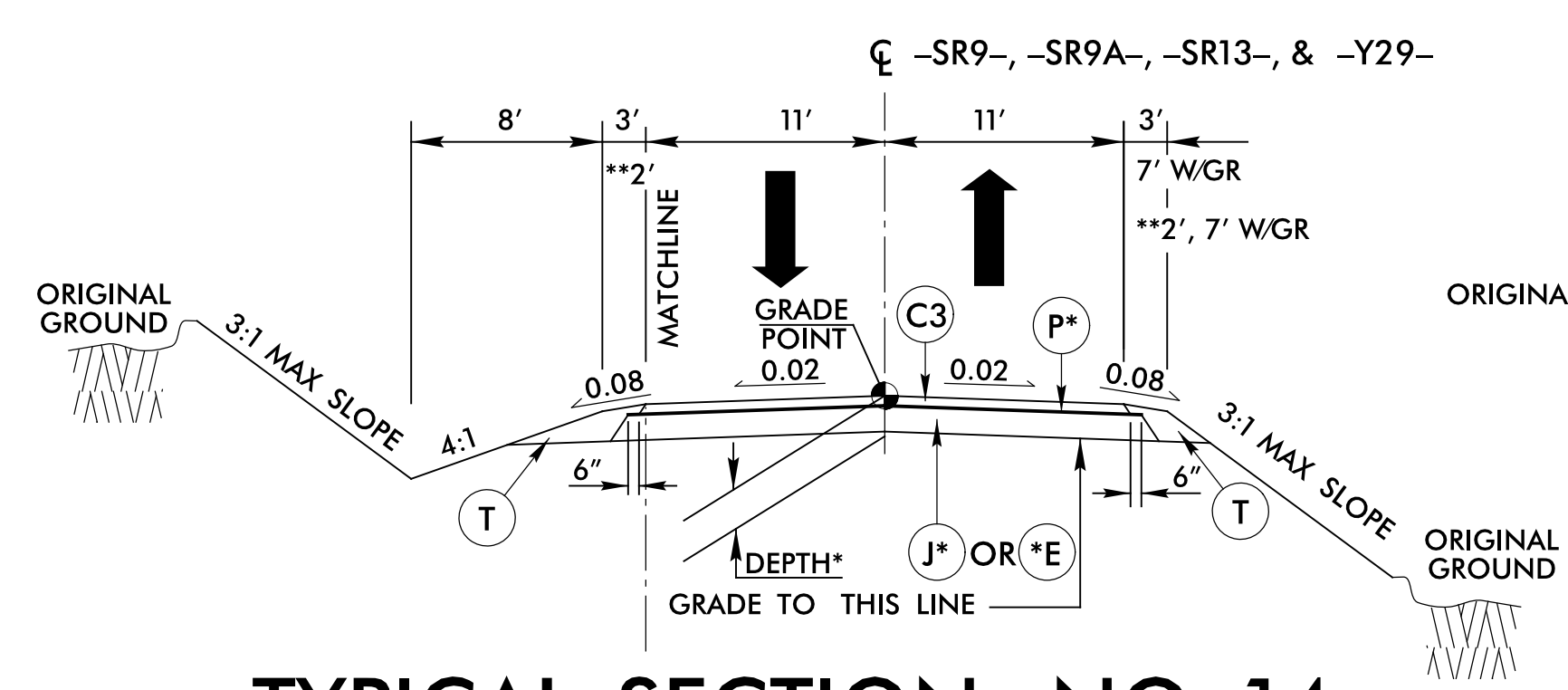
A	12" CONC. APRON
A1	6" CONC. DRWY
C1	3" S9.5D
C2	3" S9.5C
C3	3" S9.5B
C4	VAR. S9.5D
C5	VAR. S9.5C
C6	1 1/2" S9.5D
C7	VAR. S9.5B
D1	2 1/2" I19.0C
D2	3" I19.0C
D3	3 1/2" I19.0C
D4	4" I19.0C
D5	VAR. I19.0C
E1	4" B25.0C
E2	4 1/2" B25.0C
E3	5" B25.0C
E4	11" B25.0C
E5	3" B25.0C
E6	VAR. B25.0C
J1	6" ABC
J2	8" ABC
J3	10" ABC
K1	12" CLASS IV STABILIZATION
N1	GEOTEXTILE STABILIZATION
P	PRIME COAT
R1	2'-6" C & G
R2	MCI (KEYED IN)
R3	1'-6" C & G
R4	SBG
R5	EXPRESS. GUTTER
R6	8" X 18" CONC. CURB
S	4" SIDEWALK
T	EARTH MATERIAL
U	EXIST. PAVEMENT
V1	3" MILLING
V2	RUMBLE STRIPS
V3	1.5" MILLING
W1	WEDGING DETAIL 1
W2	WEDGING DETAIL 2
Y1	BARRIER, TYPE T
Y2	SF BARRIER
Y3	BARRIER, TYPE T1

**\*USE WITH TYP. SECT. NO. 15**

ALIGNMENT	C	D	J	PRIME	DEPTH
-SR15-, -Y26-	C3	NA	J2	Y	11.0"
-SR16-	C3	D1	J2	N	13.5"
-SR17-, -Y27-	C3	NA	J3	Y	13.0"
-Y24-	C2	D4	J2	N	15.0"

**\*USE WITH TYP. SECT. NO. 15B**

ALIGNMENT	J	FDPS
-SR15-	J2	4'
-SR17-	J3	6'



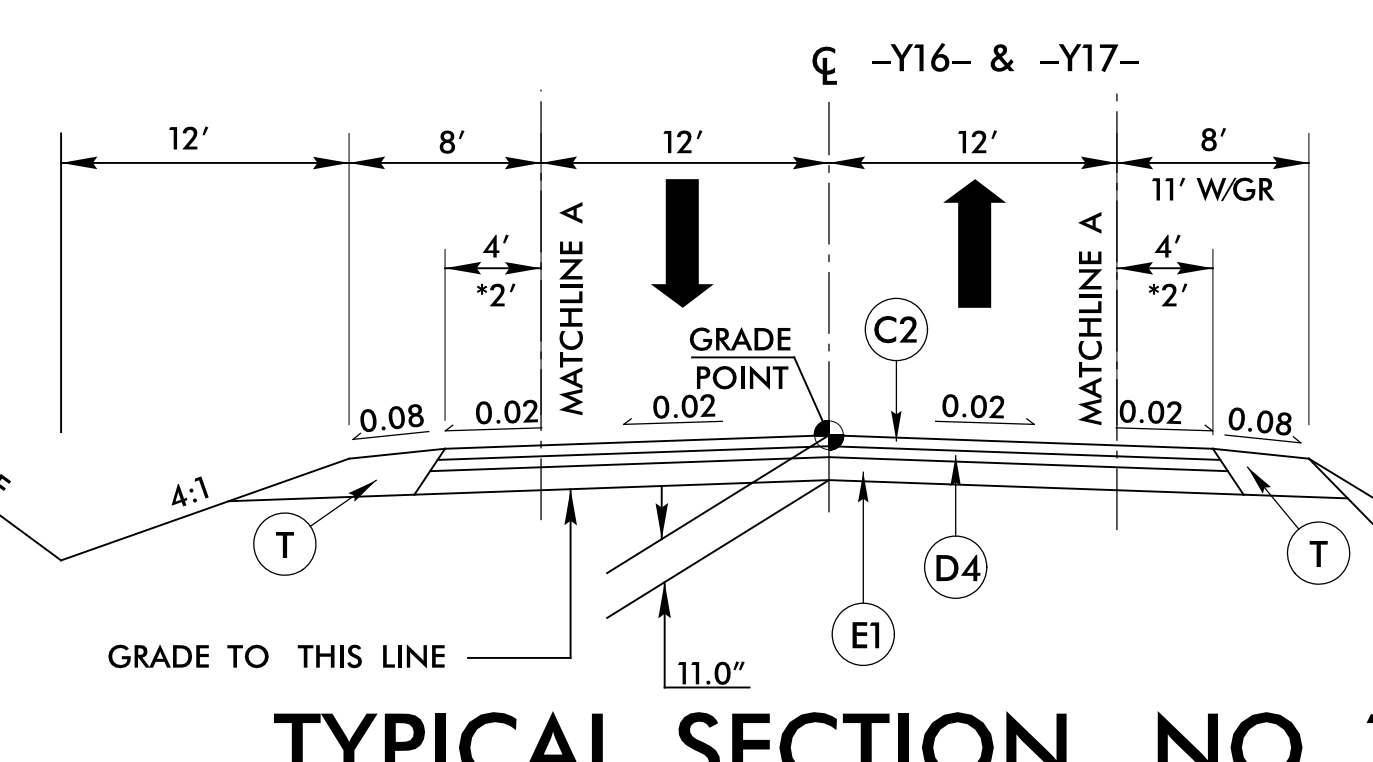
### TYPICAL SECTION NO. 14

**USE TYPICAL SECTION NO. 14**

-SR9- STA. 73+93.42 TO STA. 93+04.22  
 -SR9A- STA. 10+11.64 TO STA. 27+78.86  
 \*\* -SR13- STA. 10+00.00 TO STA. 59+58.86  
 -Y29- STA. 20+90.00 TO STA. 27+40.46 (BEGIN BRIDGE)  
 -Y29- STA. 29+37.96 (END BRIDGE) TO STA. 34+90.00

**\*USE WITH TYP. SECT. NO. 14**

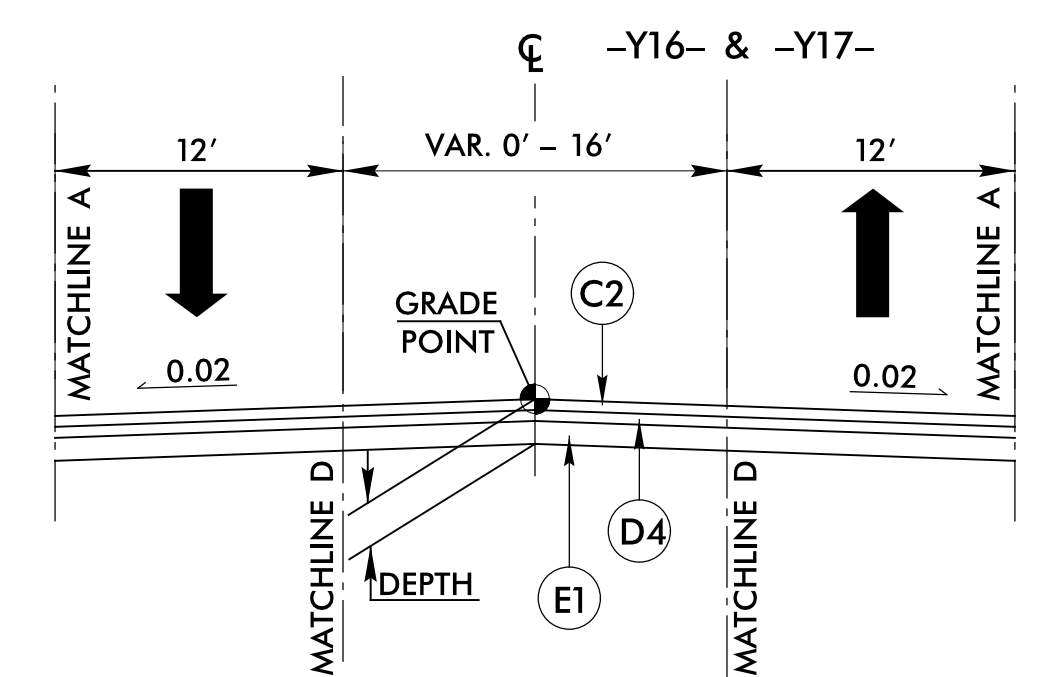
ALIGNMENT	J OR E	DEPTH	PRIME	TRENCH
-SR9-, -SR9A-, -SR13-	J2	11.0"	Y	N
-Y29-	E1	7.0"	N	Y



### TYPICAL SECTION NO. 13

**USE TYPICAL SECTION NO. 13**

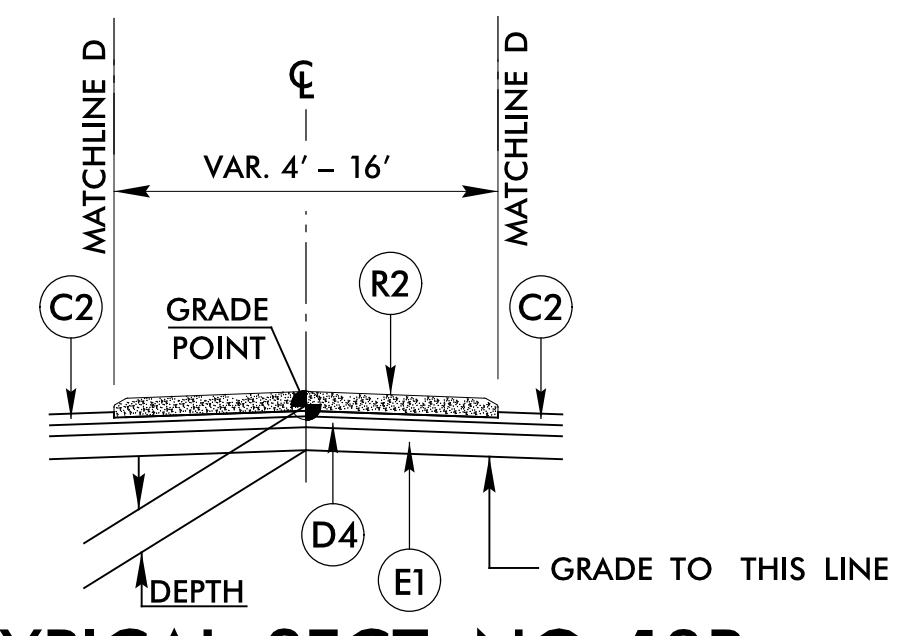
-Y16- STA. 16+90.01 TO STA. 26+14.44 (BEGIN BRIDGE)  
 -Y16- STA. 28+03.94 (END BRIDGE) TO STA. 40+75.00  
 \*-Y17- STA. 17+40.00 TO STA. 25+73.98 (BEGIN BRIDGE)  
 \*-Y17- STA. 27+87.48 (END BRIDGE) TO STA. 37+70.00



### TYPICAL SECT. NO. 13A

**USE TYPICAL SECTION NO. 13A**

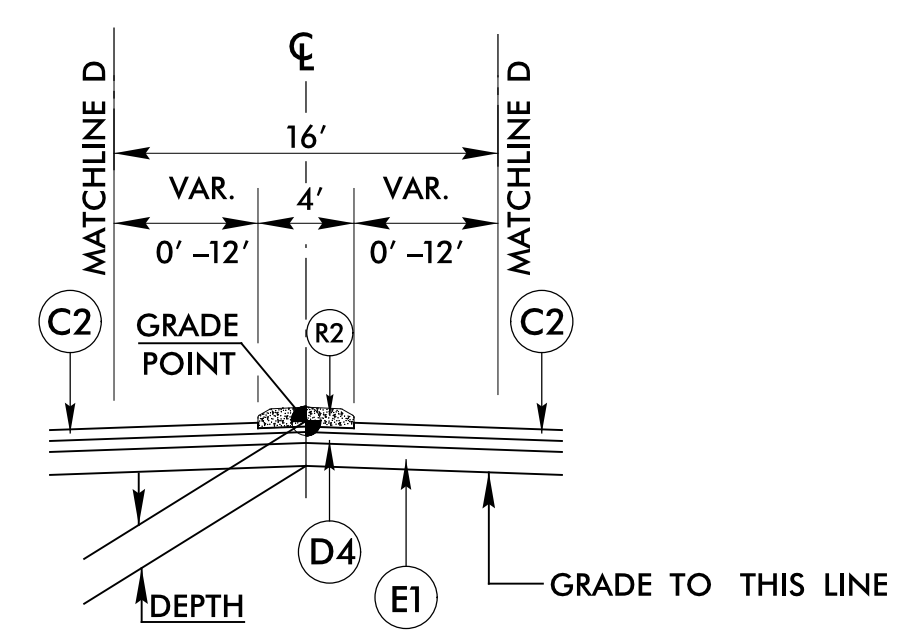
-Y16- STA. 18+22.79 TO STA. 26+14.44 (BEGIN BRIDGE)  
 -Y16- STA. 28+03.94 (END BRIDGE) TO STA. 35+54.54  
 -Y17- STA. 16+83.47 TO STA. 25+73.98 (BEGIN BRIDGE)  
 -Y17- STA. 27+87.48 (END BRIDGE) TO STA. 37+17.41



### TYPICAL SECT. NO. 13B

**USE TYPICAL SECTION NO. 13B**

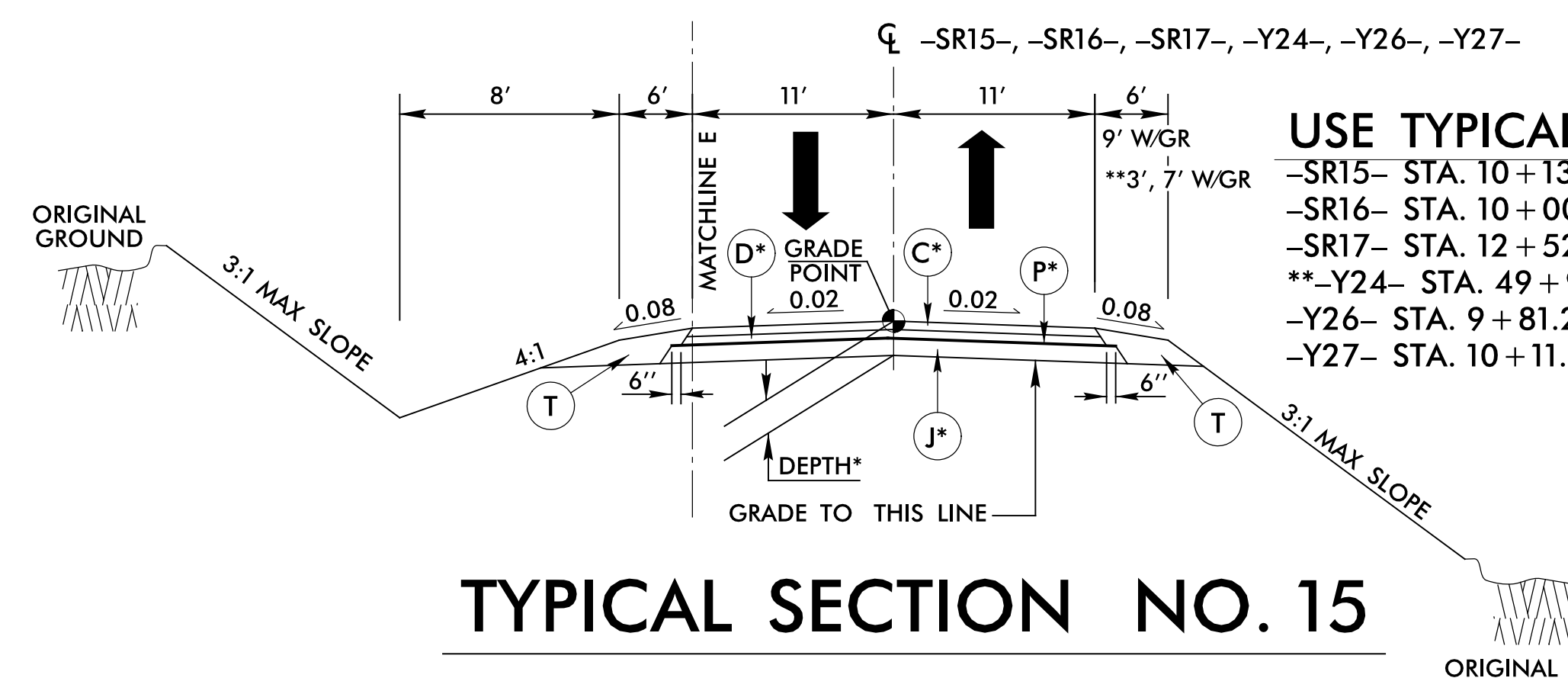
-Y16- STA. 19+40.79 TO STA. 23+10.79  
 -Y16- STA. 30+66.54 TO STA. 34+36.56  
 -Y17- STA. 18+01.47 TO STA. 21+71.47  
 -Y17- STA. 32+29.41 TO STA. 35+99.43



### TYPICAL SECT. NO. 13C

**USE TYPICAL SECTION NO. 13C**

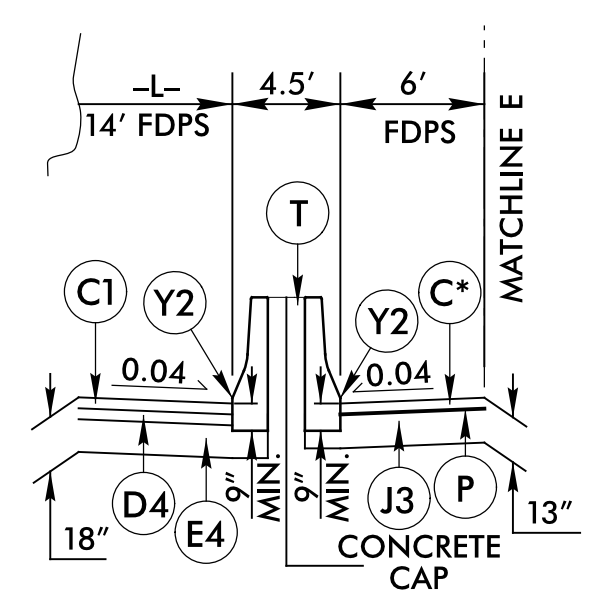
-Y16- STA. 23+72.63 +/- TO STA. 30+03.55 +/-  
 -Y17- STA. 22+40.62 +/- TO STA. 31+56.48 +/-



### TYPICAL SECTION NO. 15

**USE TYPICAL SECTION NO. 15**

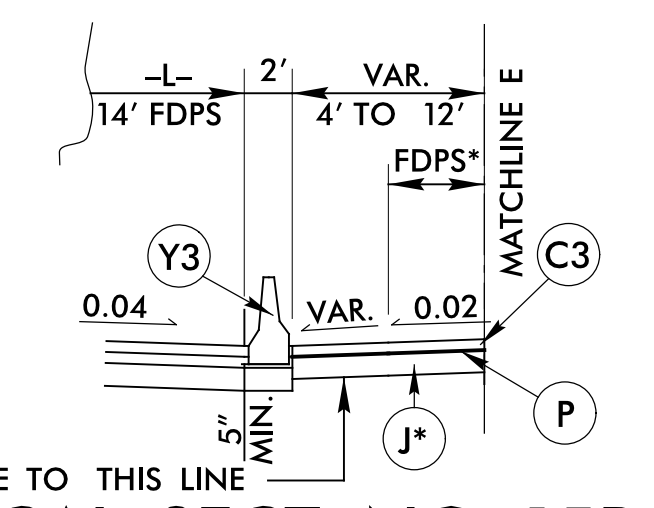
-SR15- STA. 10+13.43 TO STA. 98+31.31  
 -SR16- STA. 10+00.00 TO STA. 85+93.68  
 -SR17- STA. 12+52.18 TO STA. 65+99.36  
 \*\* -Y24- STA. 49+99.68 TO STA. 69+53.13  
 -Y26- STA. 9+81.29 TO STA. 30+84.23  
 -Y27- STA. 10+11.67 TO STA. 10+92.32



### TYPICAL SECT. NO. 15A

**USE TYPICAL SECTION NO. 15A**

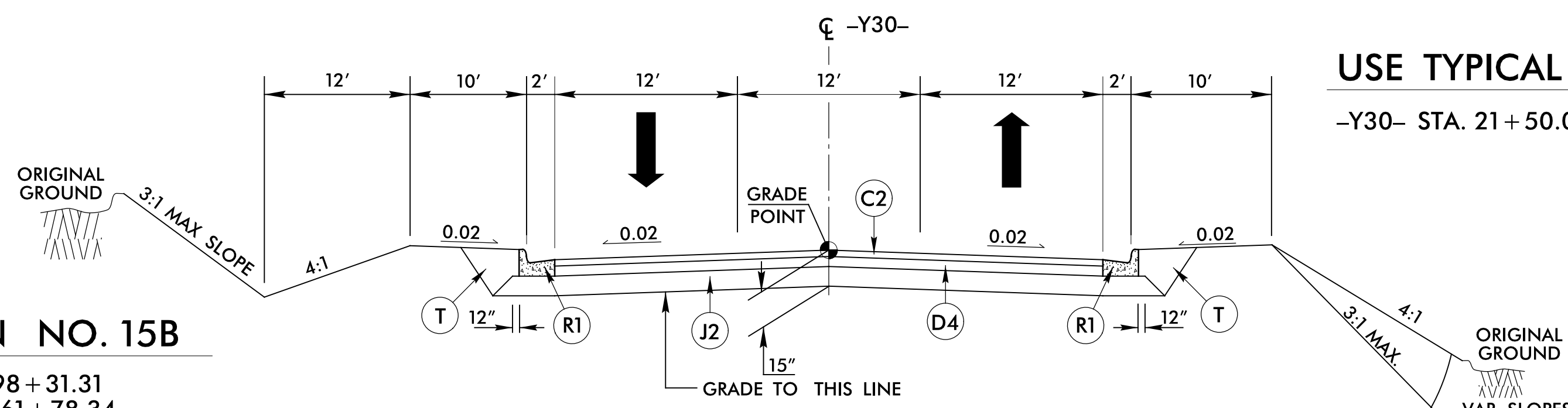
-SR17- STA. 61+78.34 TO STA. 65+99.36  
 -L- STA. 1246+00.00 TO STA. 1251+00.00



### TYPICAL SECT. NO. 15B

**USE TYPICAL SECTION NO. 15B**

-SR15- STA. 32+73.41 TO STA. 98+31.31  
 -SR17- STA. 55+46.63 TO STA. 61+78.34



### TYPICAL SECTION NO. 16

**USE TYPICAL SECTION NO. 16**

-Y30- STA. 21+50.00 TO STA. 23+15.00

PROJECT REFERENCE NO. I-5878/1-5883/1-5986B	SHEET NO. 2A-6
RW SHEET NO.	
ROADWAY DESIGN ENGINEER SWAN C. LANCASTER SEAL 027373 5/13/2021	PAVEMENT DESIGN ENGINEER VADIM G. MITCHELL SEAL 031484 5/13/2021
DOCUMENT NOT CONSIDERED FINAL UNLESS ALL SIGNATURES COMPLETED	
Michael Baker Engineering, Inc. 1800 Regency Park Suite 600 Cary, NC 27518 Tel: 919.241.1100 Fax: 919.241.1101	3381 SPRING FOREST ROAD RALEIGH, NC 27616 919.872.2666