

BILL OF MATERIAL

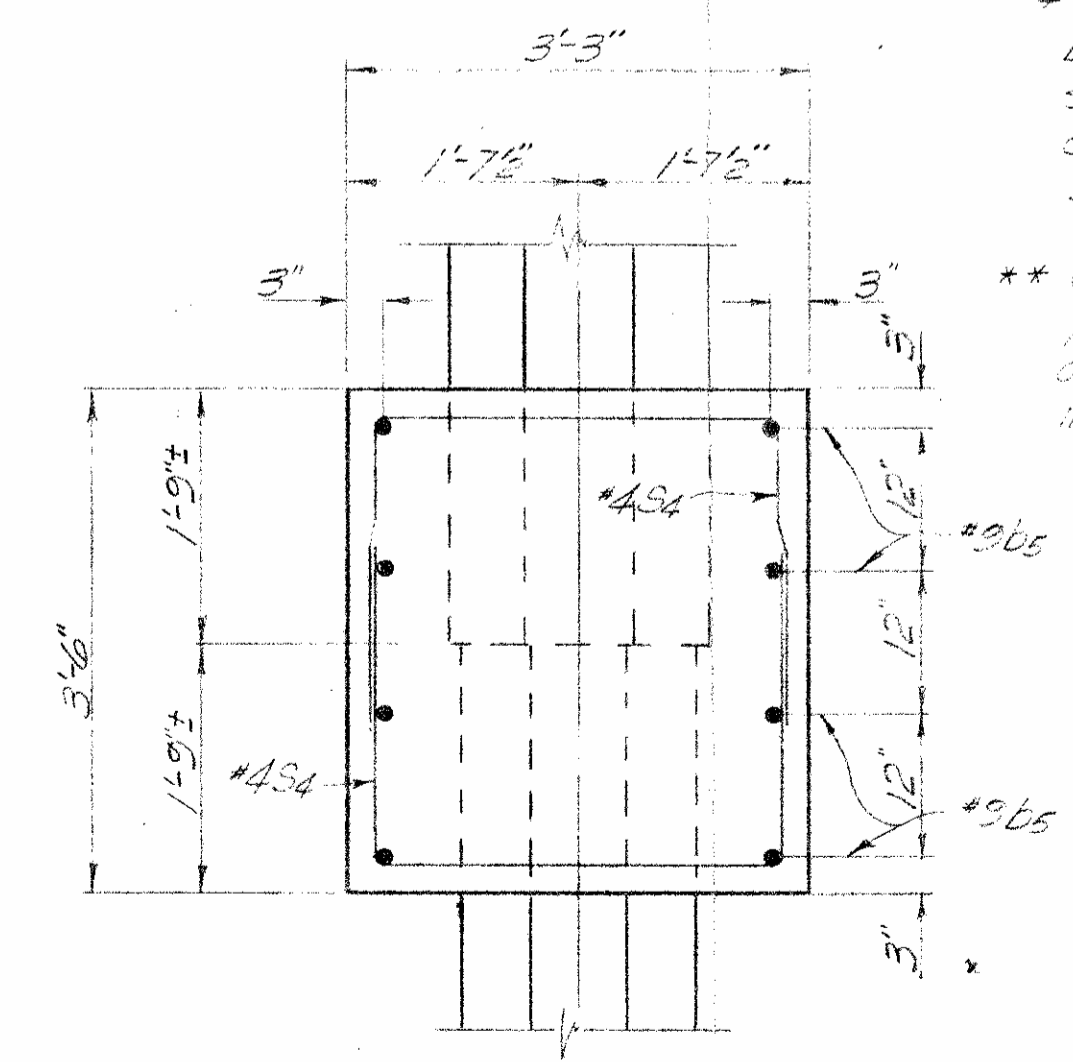
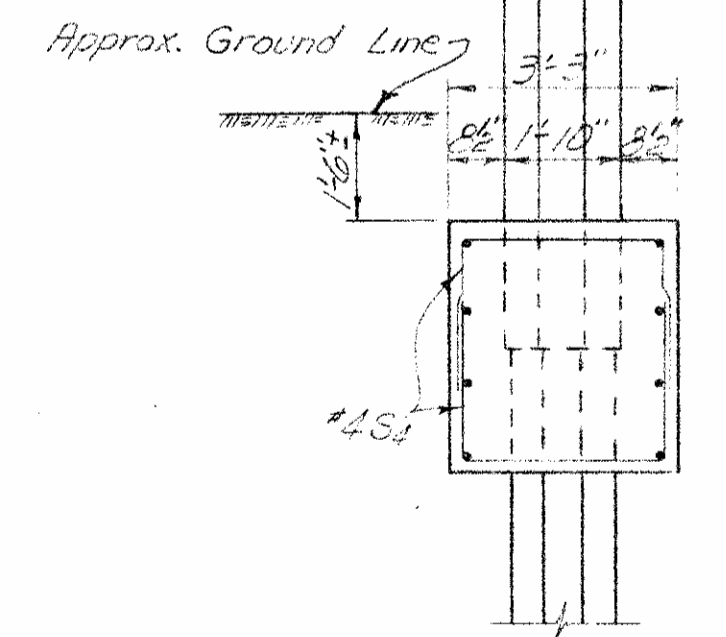
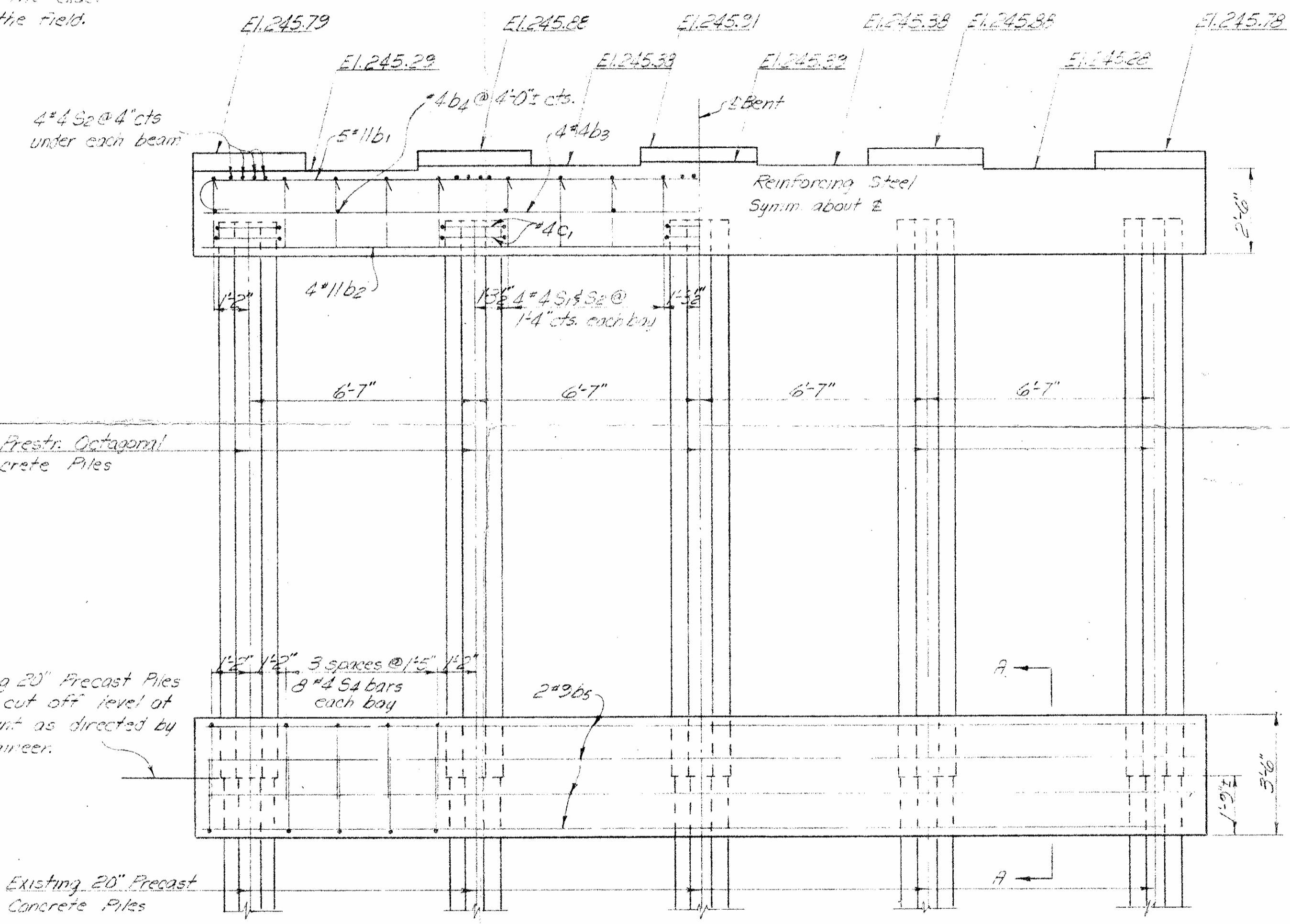
BENT NO. 3

BAR NO.	NO.	SIZE	TYPE	LENGTH	WEIGHT
b1	5	#11	1	31'-4"	832
b2	4	#11	Str.	29'-0"	616
b3	4	#4	Str.	29'-0"	77
b4	3	#4	Str.	2'-11"	16
b5	8	#9	Str.	29'-0"	789
c1	10	#4	5	9'-1"	61
S1	18	#4	2	8'-0"	96
S2	38	#4	3	3'-8"	93
S3	15	#4	4	4'-4"	43
S4	36	#4	4	7'-5"	178

Reinforcing Steel Lbs. 2,801
 Class "A" Concrete Cu. Yds. 13.3**
 22" Prestressed Octagonal Concrete Piles No. 5 Lin. Ft. 80*

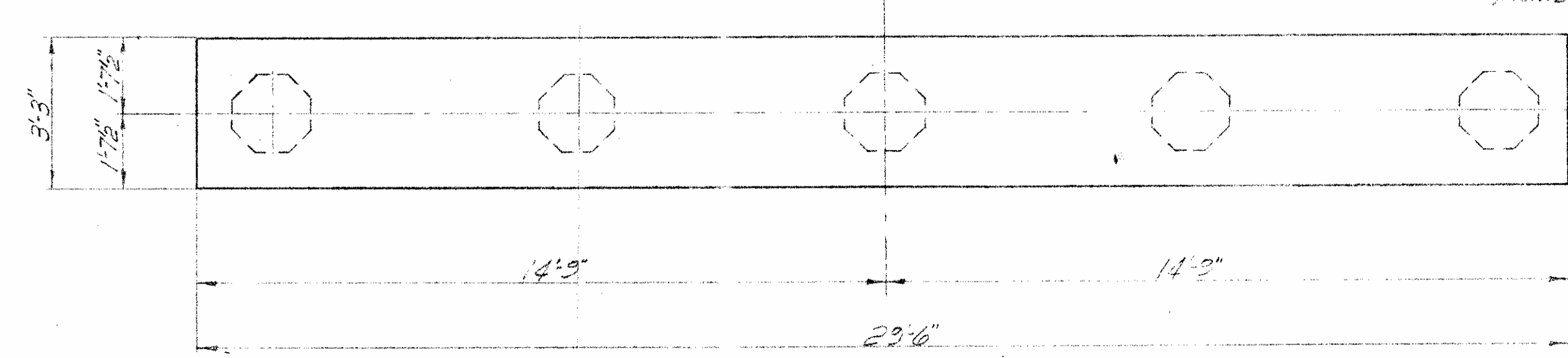
Note: 6" dimension from E cap to E of anchor bolts may be shifted slightly in order to make existing I-beams fit. The Engineer shall verify the exact location in the field.

Note: Bridge Seat Elevations shown for Bent #3 are referenced from low bridge seat elevation for existing bent #2 which is elevation 244.97. The low bridge seat elevation for bent #2 reference point is on near side right edge of cap looking toward Newton Grave.



* Actual Pile lengths to be determined after excavating to determine exact location of pile splice.
 ** Concrete displaced by pile heads has been deducted in cap and in pile collar.

Note: 22" Prestressed Octagonal Piles are to be centered on existing 20" Pre-cast Concrete piles at splice location. Care shall be exercised to set piles plumb.



W.O. No. 5.314
 JOHNSTON COUNTY
 STATION: 85+41.35 Exist. Line "L"

STATE OF NORTH CAROLINA					SHEET NO.
STATE HIGHWAY COMMISSION					
RALEIGH					TOTAL SHEETS
BENT NO. 3					
JUNE 1969					
REVISIONS					
NO.	BY	DATE	NO.	BY	DATE
1			3		
2			4		