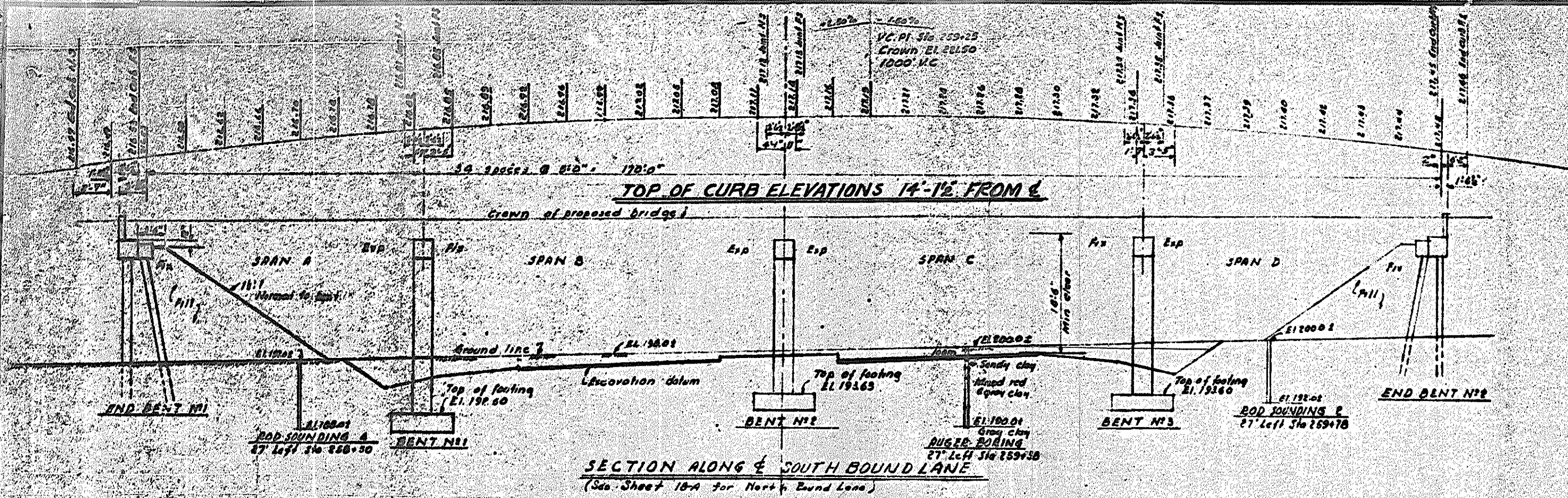
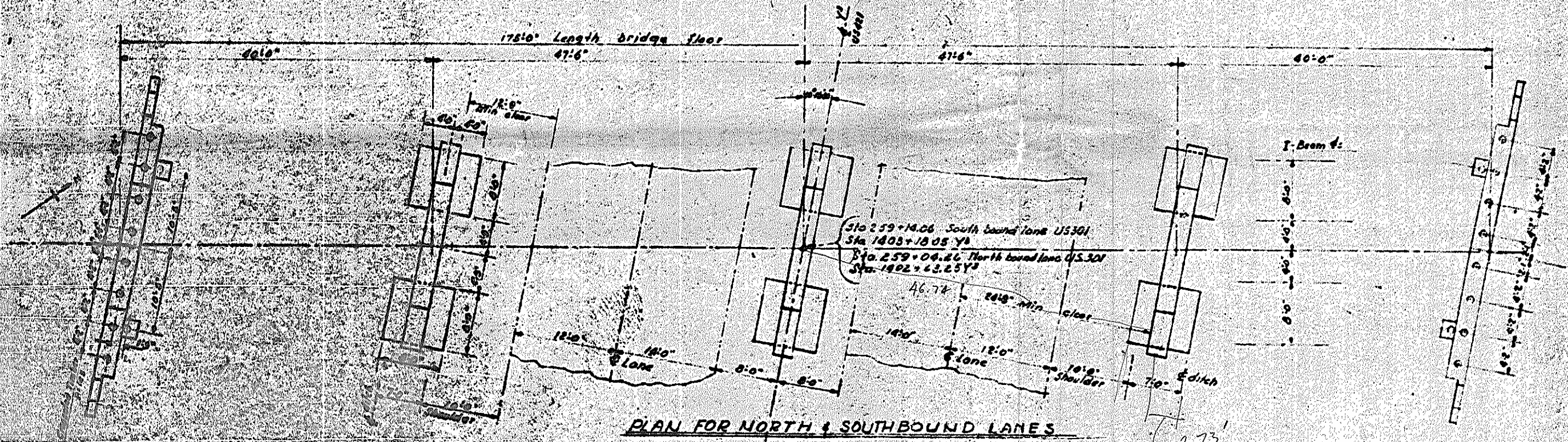


NOTE

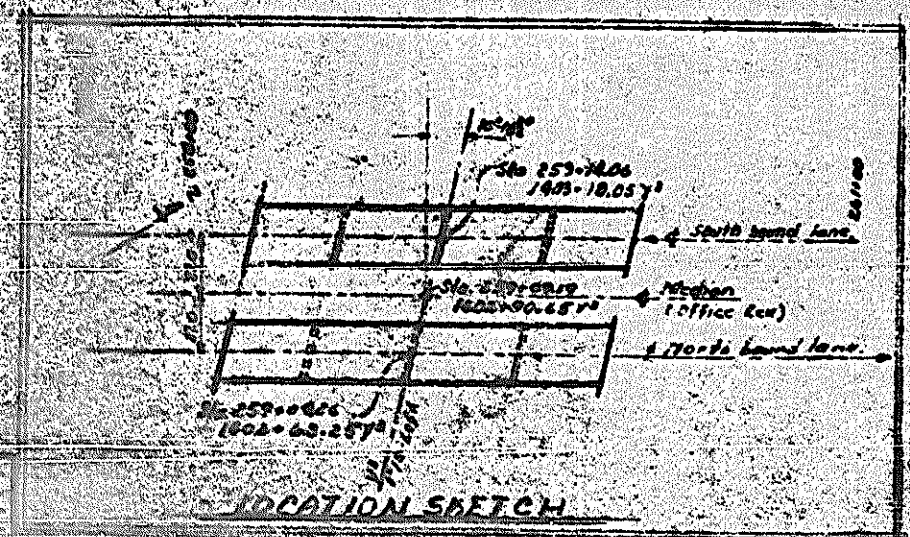
- Assumed live load H10-S16(24)
- For other Design Data and General Notes see Sheet 3-N
- Timber piles to be treated to retain a minimum of 10 lbs of creosote oil per cubic foot of material.
- End bent piles shall be driven thru the roadway fill.
- Crossed timber piles shall be driven to a minimum bearing capacity of 10 tons per pile.
- Test piles will not be required.
- Order list of piles to be based on the following:
End Bent #1 - 26 ft
End Bent #2 - 25 ft
- Computed foundation load for bents is 24 tons per sq. ft.
- Excavation for Bents 1 & 2 not to be started until roadway section has been graded.
- Before driving piles for end bents the fill to be excavated to El. 227.0. This excavation will not be measured and paid for as a separate item. The cost to be included in the unit price of the general pay items. See Special Provisions.
- Traffic will be detoured over county roads during construction of this structure.
- Undersized structure excavates for Bents 1, 2 & 3 to be measured from the graded roadway surface.



SECTION ALONG E SOUTH BOUND LANE
(See Sheet 18-A for North Bound Lane)



PLAN FOR NORTH & SOUTHBOUND LANES



LOCATION SKETCH

TOTAL BILL OF MATERIAL FOR ONE BRIDGE - 2 REQUIRED

	Reinforcing Steel Lbs	Class A Concrete Cu. Yds	Structural Steel Approx lbs	Crossed Timber Piles		Uncr. Str Excav Cu. Yds	CROSSED TIMBER PILES PER END BENT	CROSSED PILE CAP PER END BENT
				No.	Lin ft			
Superstructure	33497	162.7	119400					
End Bent #1	1975	10.7		10	200		202.9	172
Bent #2	4739	25.4				511.4		
Bent #3	4687	25.1				487.9		
End Bent #4	1975	10.7		10	200		202.9	172
Approach Curb & Retain	305	8.6						
Totals	53,851	268.2	119,600	20	400	999.3	405.8	344

STA. 239+14.06 S. BOUND

Revised to add Special Approach Curbs and Retaining Walls, by JCC, Feb. 10, 1955
JCC, Feb. 22, 1955

Revised to add Bridge on North Bound Lane, by JCC, Feb. 10, 1955

I CERTIFY THAT THIS BRIDGE WAS BUILT ACCORDING TO PLANS

B.M. #18 Nail in road 15' L.R. 85 ft Left Sta 267+00 El. 212.0

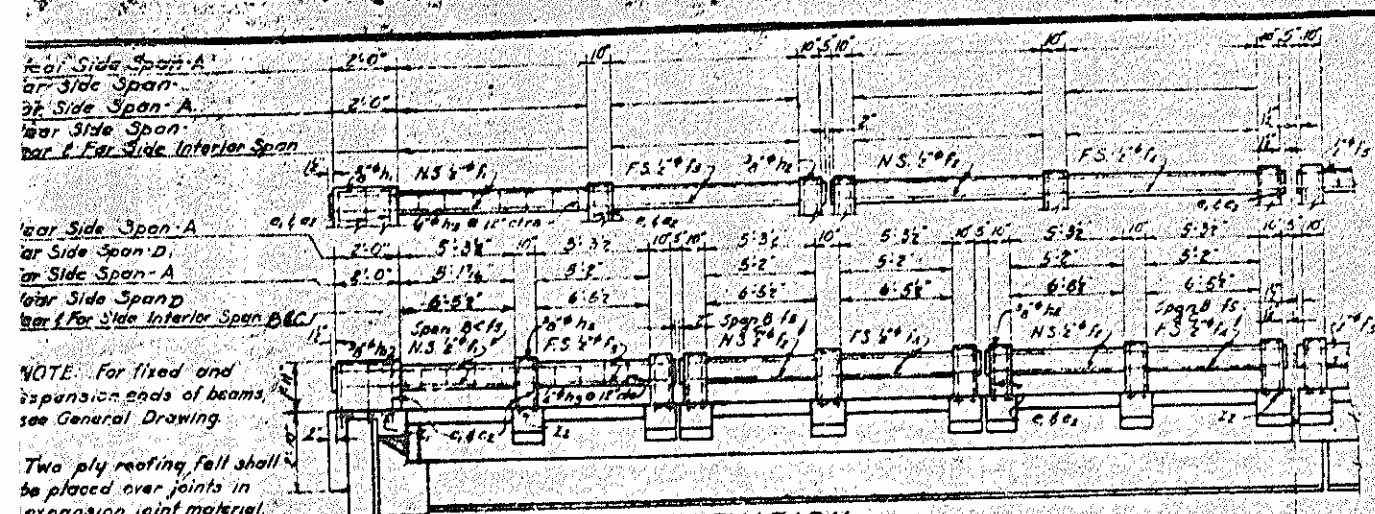
PROJECT NO. 4176
HARNETT COUNTY
STATION: 239+14.06 OF Sta. 239+00.00
S. Bound Lane

STATE OF NORTH CAROLINA
STATE HIGHWAY AND PUBLIC WORKS COMMISSION

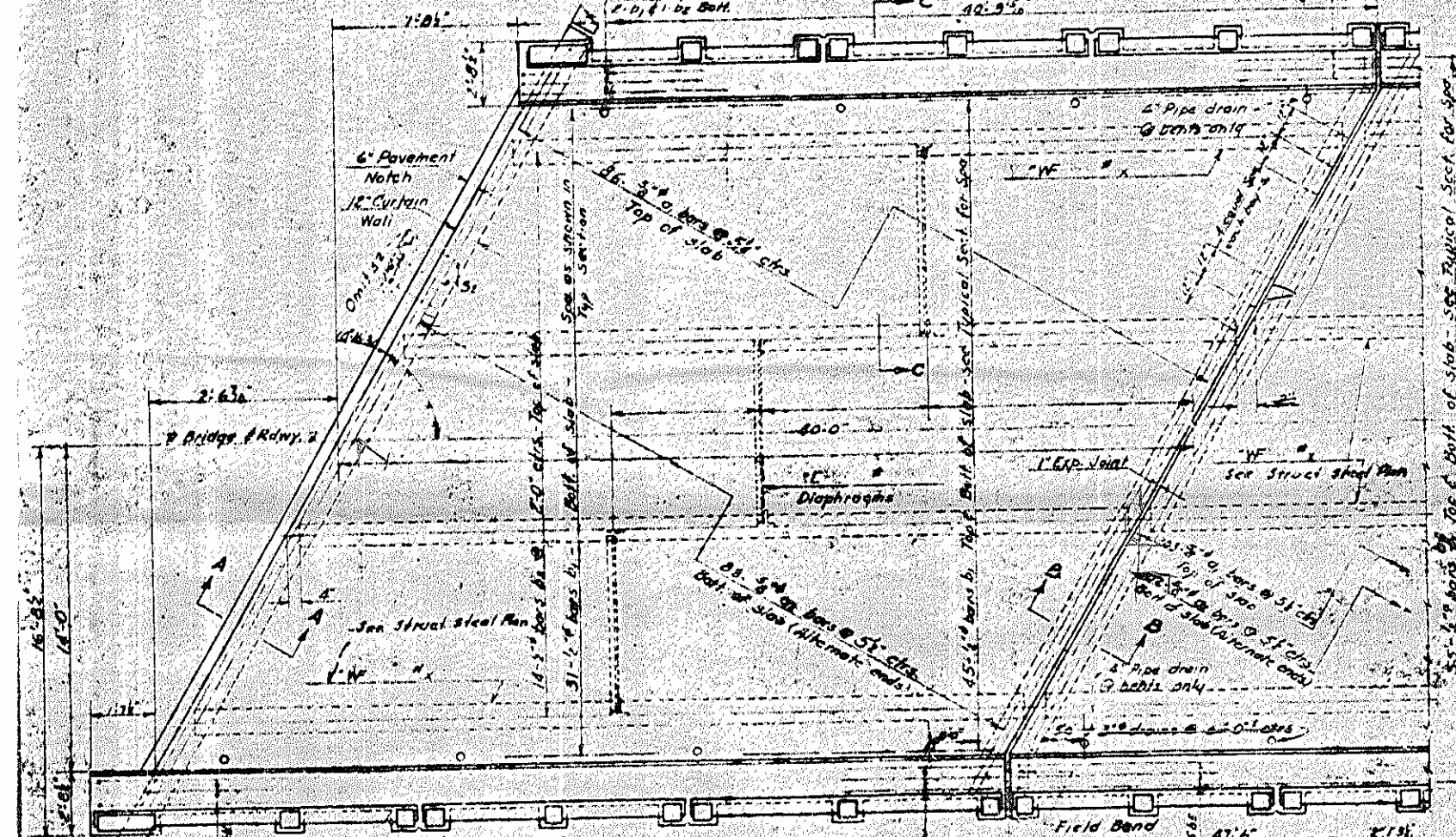
GENERAL DRAWING
BRIDGE ON U.S. 501
OVER U.S. 421
AT DUNN

JULY 1955

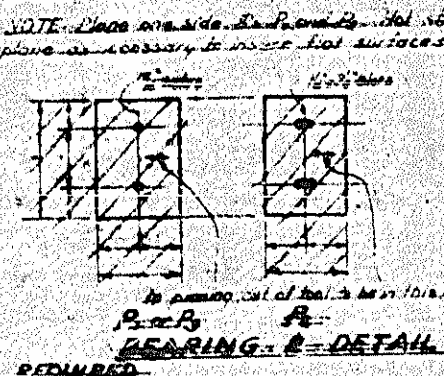
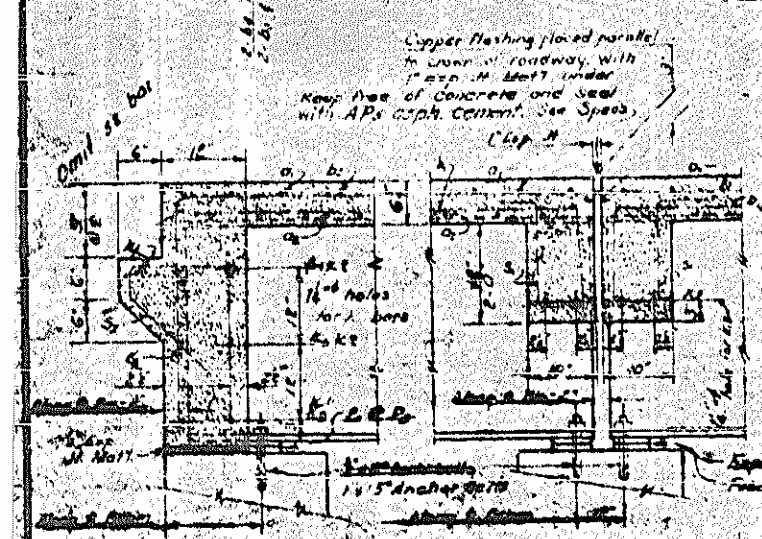
REV.	DATE	BY	CHKD.
3	N. C.	4974	



ELEVATION



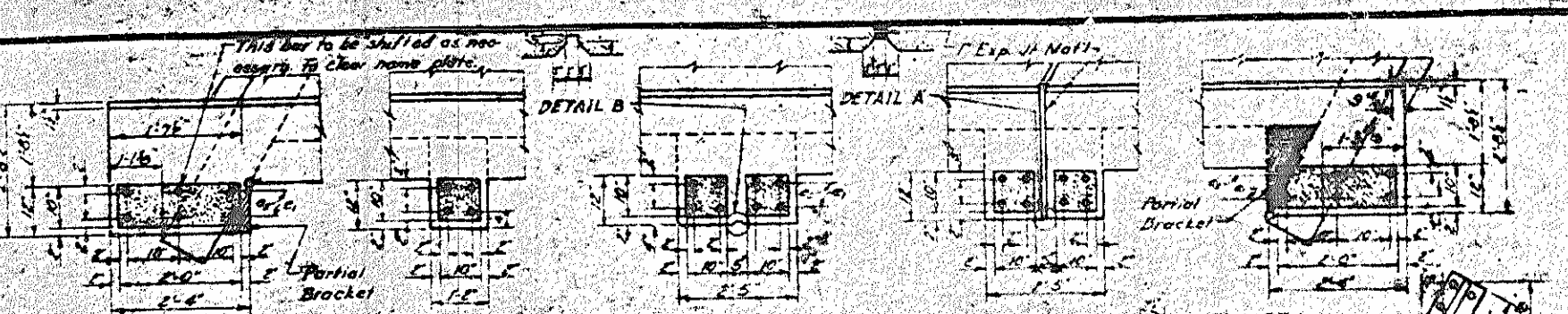
PLAN



DRAIN DETAIL

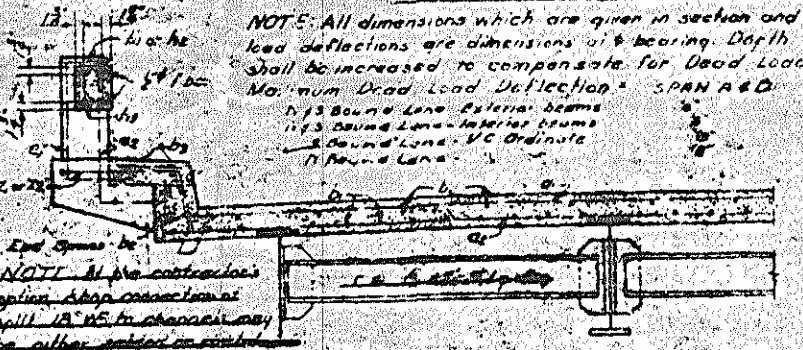
REQUIRED 12
NOTE: Drains may be either cast iron standard weight galvanized steel or Transite pipe.

POST DETAILS



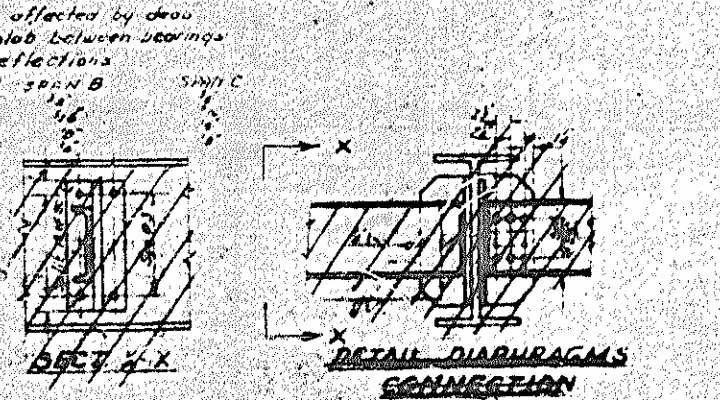
NOTE: All dimensions which are given in section and are affected by dead load deflections are dimensions at bearing. Depth of slab between bearings shall be increased to compensate for Dead Load Deflections.
Maximum Dead Load Deflection: SPAN A & B: 1/16"
SPAN C: 1/8"
1/8" Bound Line - Exterior Beams
1/8" Bound Line - Interior Beams
1/8" Bound Line - VC Ordinate
7" Bound Line

HALF TYPICAL SECTION



SECTION C-C

HALF END VIEW



BILL OF MATERIAL FOR 2 Spans 10' 0" x 14' 0"

Qty.	No.	Size	Type	Length	Weight	Bar No.	Size	Type	Length	Weight
1	1	10"	W	14'	125.0	1	10"	W	14'	125.0
2	2	10"	W	14'	125.0	2	10"	W	14'	125.0
4	4	10"	W	14'	125.0	4	10"	W	14'	125.0
8	8	10"	W	14'	125.0	8	10"	W	14'	125.0
12	12	10"	W	14'	125.0	12	10"	W	14'	125.0
16	16	10"	W	14'	125.0	16	10"	W	14'	125.0
20	20	10"	W	14'	125.0	20	10"	W	14'	125.0
24	24	10"	W	14'	125.0	24	10"	W	14'	125.0
28	28	10"	W	14'	125.0	28	10"	W	14'	125.0
32	32	10"	W	14'	125.0	32	10"	W	14'	125.0
36	36	10"	W	14'	125.0	36	10"	W	14'	125.0
40	40	10"	W	14'	125.0	40	10"	W	14'	125.0
44	44	10"	W	14'	125.0	44	10"	W	14'	125.0
48	48	10"	W	14'	125.0	48	10"	W	14'	125.0
52	52	10"	W	14'	125.0	52	10"	W	14'	125.0
56	56	10"	W	14'	125.0	56	10"	W	14'	125.0
60	60	10"	W	14'	125.0	60	10"	W	14'	125.0
64	64	10"	W	14'	125.0	64	10"	W	14'	125.0
68	68	10"	W	14'	125.0	68	10"	W	14'	125.0
72	72	10"	W	14'	125.0	72	10"	W	14'	125.0
76	76	10"	W	14'	125.0	76	10"	W	14'	125.0
80	80	10"	W	14'	125.0	80	10"	W	14'	125.0
84	84	10"	W	14'	125.0	84	10"	W	14'	125.0
88	88	10"	W	14'	125.0	88	10"	W	14'	125.0
92	92	10"	W	14'	125.0	92	10"	W	14'	125.0
96	96	10"	W	14'	125.0	96	10"	W	14'	125.0
100	100	10"	W	14'	125.0	100	10"	W	14'	125.0

DESIGN DATA

Specifications: A.A. S.F.D. 1921
Assumed Live Load: HTG-31(60)
Impact Allowance: See Specifications
Reinforcing steel in tension: 40,000 lbs. per sq. in.
Concrete in compression: 1000 lbs. per sq. in.
Concrete in shear: 50 lbs. per sq. in.
Equivalent fluid mass of earth: 120 lbs. per cu. ft.

GENERAL NOTE

CONCRETE to be class A Standard. Maximum coarse aggregate to be used throughout. Construction joints will be permitted at top of curb. Unless otherwise noted, all exposed corners of concrete shall be chamfered 1" except as follows: handrails, parapets, etc. Joints shall be made at least 12" from hand rails. All concrete except at hand rails shall be compacted by mechanical vibration.

REINFORCING STEEL except 1/2" shall be deformed bars. All dimensions relative to reinforcing steel are to centers of bars. No splices will be permitted except where shown on plans. Bars to be lapped 40 db. at lap splices. All reinforcing steel shall be securely held in correct position.

EXPANSION JOINT MATERIAL may be a rubber compound or cork conforming to the requirements of A.A.S.H.O. Specifications. STRUCTURAL STEEL Structural steel shall meet all the requirements of the specifications and shall be given one shop coat and one field coat of red lead and finally two coats of aluminum paint. Detail drawings for structural steel shall be submitted for approval. No unchecked drawings will be accepted.

WELDING to be done in accordance with specifications.

NAME PLATES Two nameplates provided for the bridge. One shall be on each right hand end post supporting bridge.

MATERIAL AND WORKMANSHIP shall conform with the Specifications of the North Carolina State Highway & Public Commission.

Revised to add Bridge over Bound Lane 1/2 mile by...

PROJECT NO. 101
HARNETT COUNTY
STATION: 259-1000

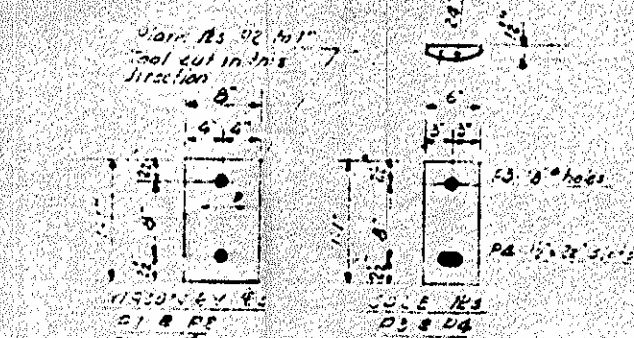
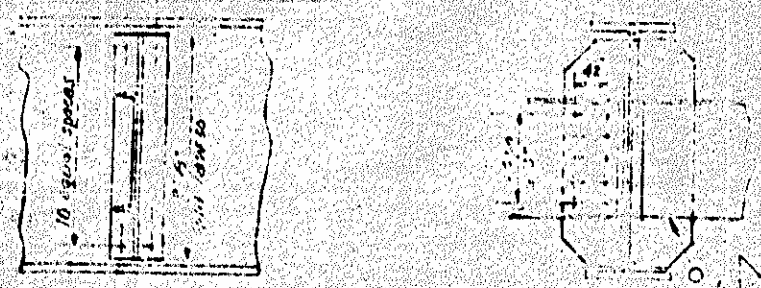
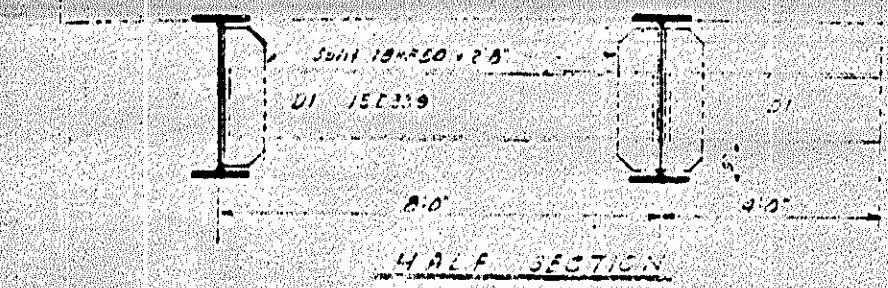
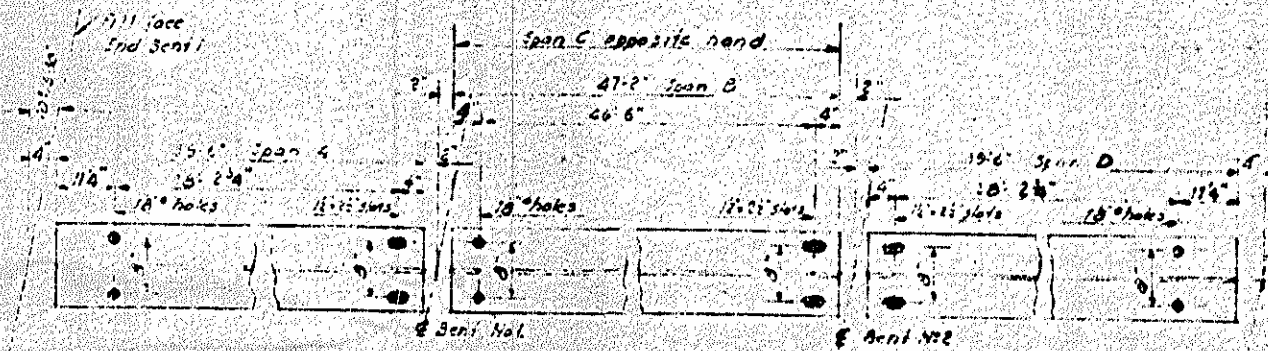
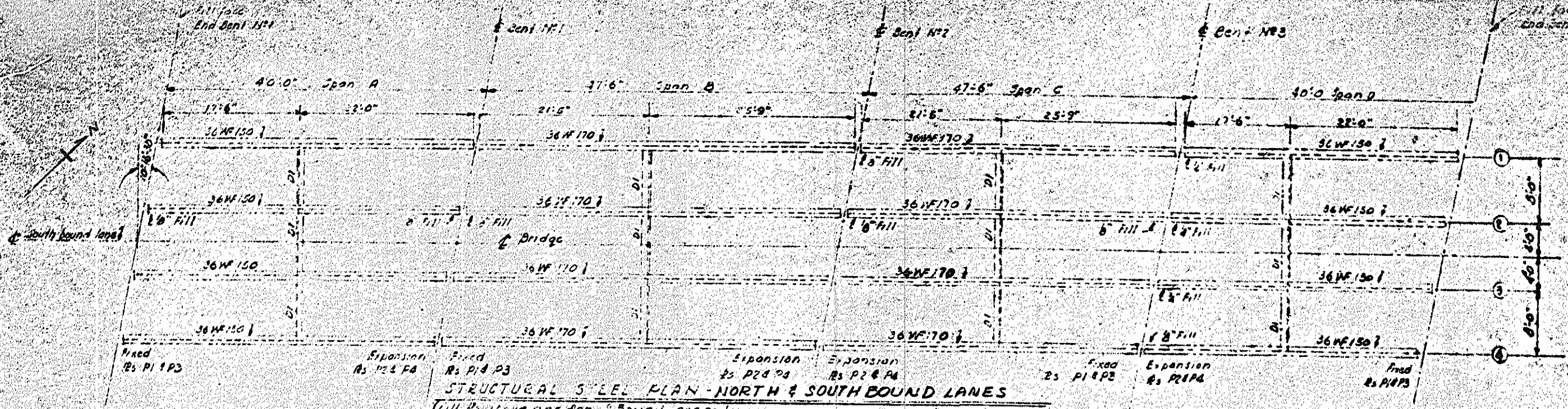
CONCRETE PLAN & DET.

STATE OF NORTH CAROLINA
STATE HIGHWAY AND
PUBLIC WORKS COMMISSION

STANDARD
T-BEAM SUPERSTR
WITH R.C. FLOOR

DESIGN NO.	DATE	PROJECT NO.
3-20	6-25-50	4374

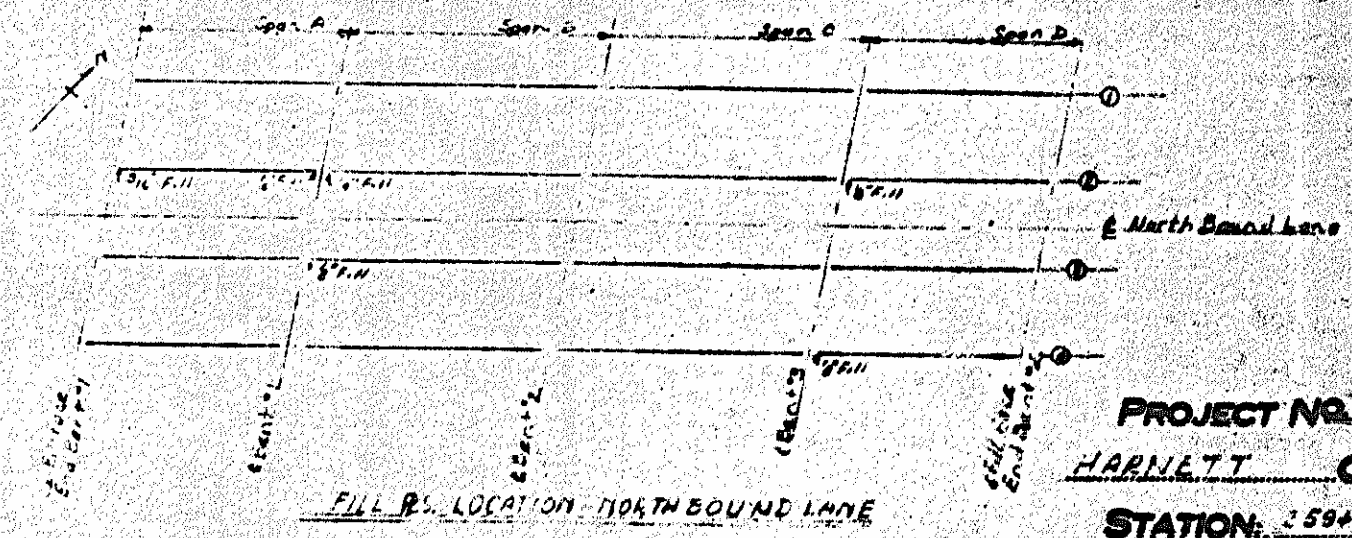
At the contractor's option shop curving of channel to split 12" may be either or riveted using 4" rivets. Field connections of diaphragms to beam to be bolted using 1/2" turned bolts - Bars bolts at opposite ends.



Required: P1 - 16" x 16" x 1/2" flat straighten
 P2 - 16" x 16" x 1/2" flat
 P3 - 16" x 16" x 1/2" flat
 P4 - 16" x 16" x 1/2" flat

FILL IN'S
 S Bound Lane - 7'-5" x 11'-1" (3'-0" x 11'-1")
 N Bound Lane - 6'-8" x 11'-1" (1'-5" x 11'-1") (1'-8" x 11'-1")

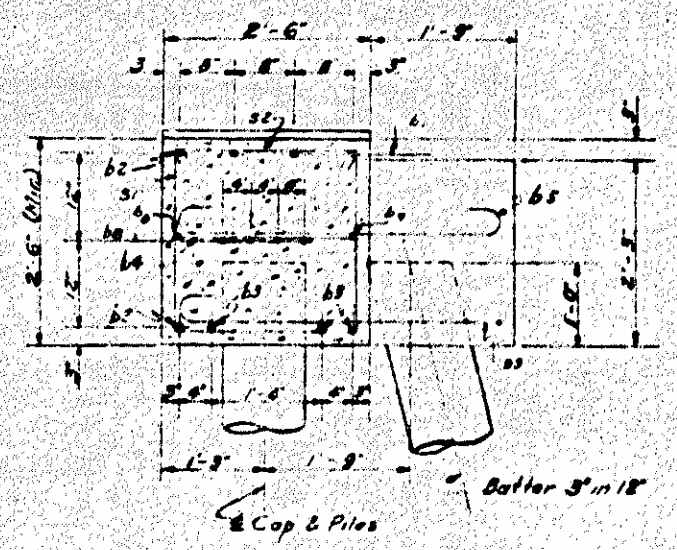
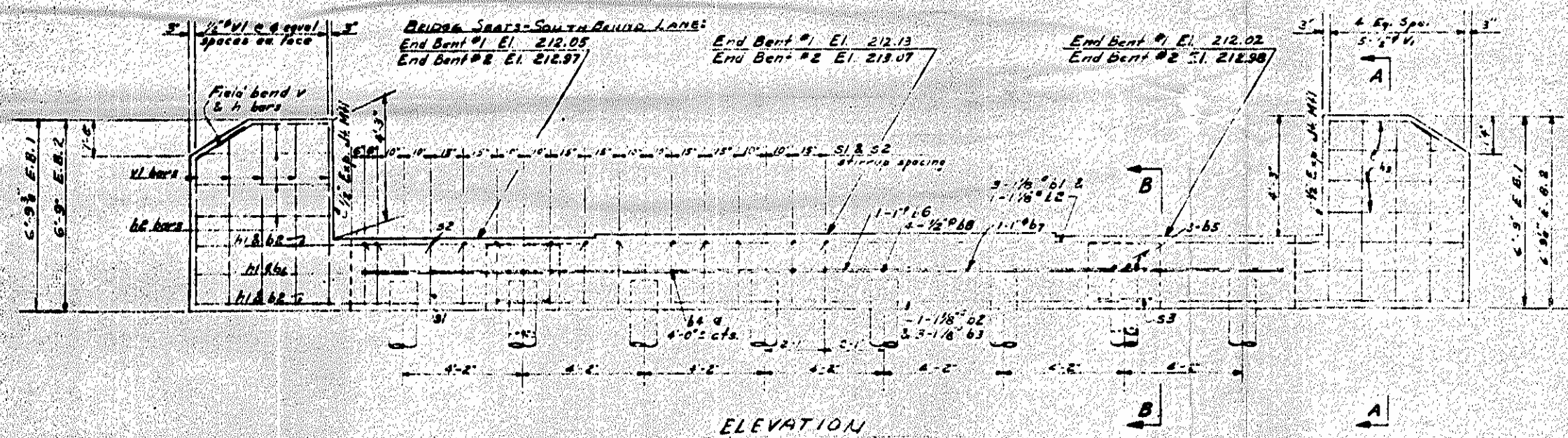
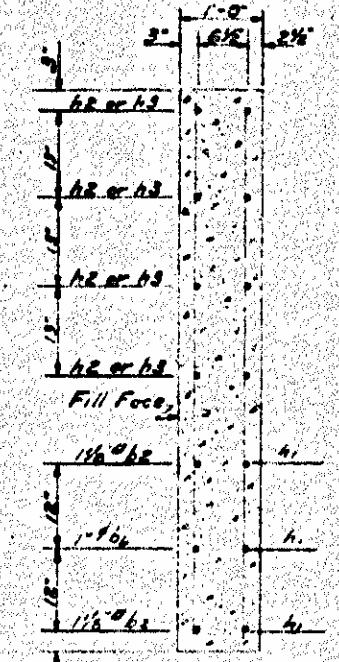
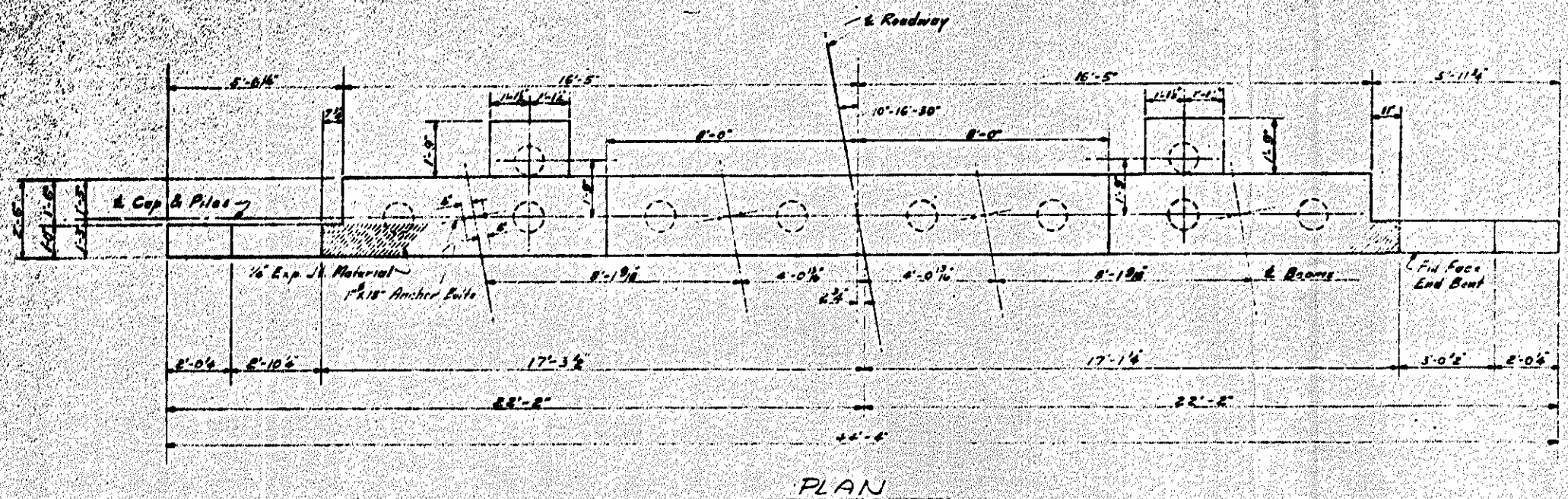
All fill in's must be combined with the maximum fill in's required thickness after planing.



PROJECT NO. 43
HARNETT COU
STATION: 259+1406

STATE OF NORTH CAROLINA
 STATE HIGHWAY AND PUBLIC WORKS COMMISSION
 SUPERSTRUCTURE
 STRUCTURAL STEEL
 PLAN & DETAILS
 NORTH & SOUTH BOUND
 JUNE 1950

Revised to add North Bound Lane, 9/24/50 by EBM.

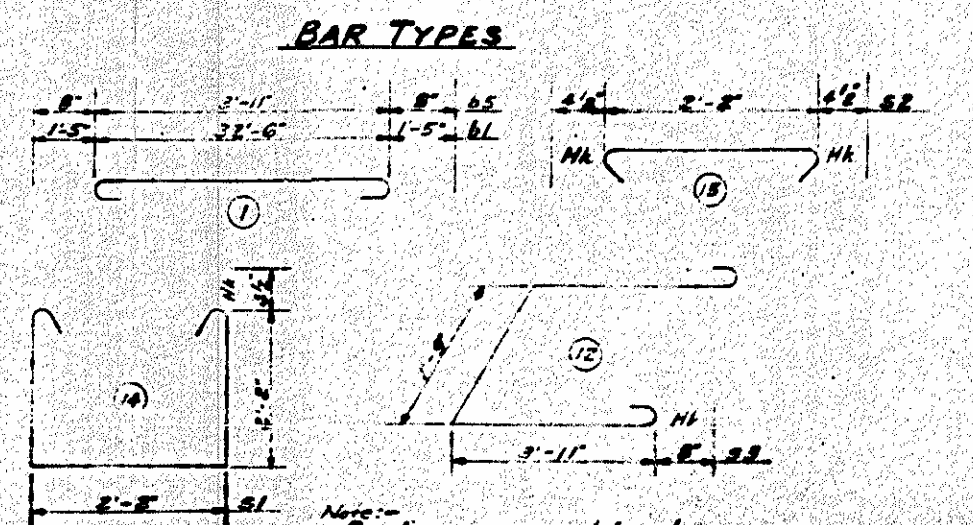
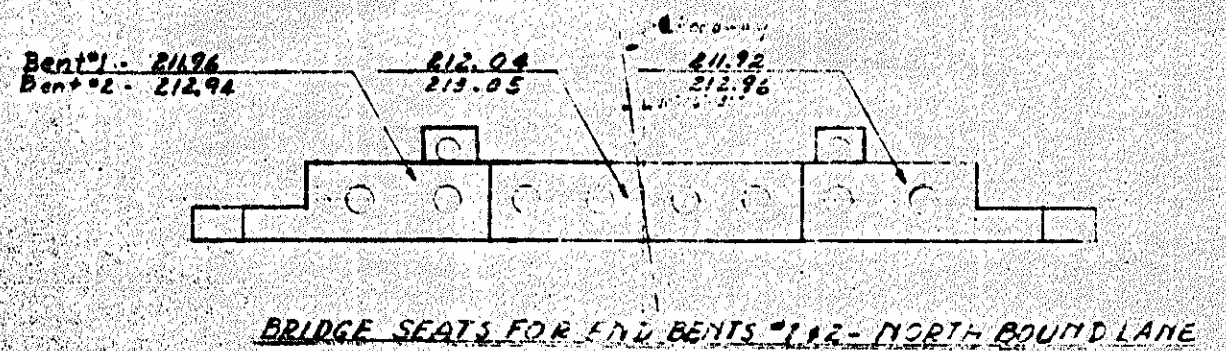


REINFORCING STEEL REQUIRED PER BRIDGE -

BILL OF MATERIAL FOR END BENT -

BAR	No.	SIZE	TYPE	LENGTH	WEIGHT
b1	2	1 1/2"	Str	32'-0"	656
b2	2	1 1/2"	Str	32'-0"	656
b3	2	1 1/2"	Str	32'-0"	656
b4	2	1 1/2"	Str	32'-0"	656
b5	2	1 1/2"	Str	32'-0"	656
b6	2	1 1/2"	Str	32'-0"	656
b7	2	1 1/2"	Str	32'-0"	656
b8	2	1 1/2"	Str	32'-0"	656
b9	2	1 1/2"	Str	32'-0"	656
b10	2	1 1/2"	Str	32'-0"	656
b11	2	1 1/2"	Str	32'-0"	656
b12	2	1 1/2"	Str	32'-0"	656
b13	2	1 1/2"	Str	32'-0"	656
b14	2	1 1/2"	Str	32'-0"	656
b15	2	1 1/2"	Str	32'-0"	656
b16	2	1 1/2"	Str	32'-0"	656
b17	2	1 1/2"	Str	32'-0"	656
b18	2	1 1/2"	Str	32'-0"	656
b19	2	1 1/2"	Str	32'-0"	656
b20	2	1 1/2"	Str	32'-0"	656
b21	2	1 1/2"	Str	32'-0"	656
b22	2	1 1/2"	Str	32'-0"	656
b23	2	1 1/2"	Str	32'-0"	656
b24	2	1 1/2"	Str	32'-0"	656
b25	2	1 1/2"	Str	32'-0"	656
b26	2	1 1/2"	Str	32'-0"	656
b27	2	1 1/2"	Str	32'-0"	656
b28	2	1 1/2"	Str	32'-0"	656
b29	2	1 1/2"	Str	32'-0"	656
b30	2	1 1/2"	Str	32'-0"	656
b31	2	1 1/2"	Str	32'-0"	656
b32	2	1 1/2"	Str	32'-0"	656
b33	2	1 1/2"	Str	32'-0"	656
b34	2	1 1/2"	Str	32'-0"	656
b35	2	1 1/2"	Str	32'-0"	656
b36	2	1 1/2"	Str	32'-0"	656
b37	2	1 1/2"	Str	32'-0"	656
b38	2	1 1/2"	Str	32'-0"	656
b39	2	1 1/2"	Str	32'-0"	656
b40	2	1 1/2"	Str	32'-0"	656
b41	2	1 1/2"	Str	32'-0"	656
b42	2	1 1/2"	Str	32'-0"	656
b43	2	1 1/2"	Str	32'-0"	656
b44	2	1 1/2"	Str	32'-0"	656
b45	2	1 1/2"	Str	32'-0"	656
b46	2	1 1/2"	Str	32'-0"	656
b47	2	1 1/2"	Str	32'-0"	656
b48	2	1 1/2"	Str	32'-0"	656
b49	2	1 1/2"	Str	32'-0"	656
b50	2	1 1/2"	Str	32'-0"	656
b51	2	1 1/2"	Str	32'-0"	656
b52	2	1 1/2"	Str	32'-0"	656
b53	2	1 1/2"	Str	32'-0"	656
b54	2	1 1/2"	Str	32'-0"	656
b55	2	1 1/2"	Str	32'-0"	656
b56	2	1 1/2"	Str	32'-0"	656
b57	2	1 1/2"	Str	32'-0"	656
b58	2	1 1/2"	Str	32'-0"	656
b59	2	1 1/2"	Str	32'-0"	656
b60	2	1 1/2"	Str	32'-0"	656
b61	2	1 1/2"	Str	32'-0"	656
b62	2	1 1/2"	Str	32'-0"	656
b63	2	1 1/2"	Str	32'-0"	656
b64	2	1 1/2"	Str	32'-0"	656
b65	2	1 1/2"	Str	32'-0"	656
b66	2	1 1/2"	Str	32'-0"	656
b67	2	1 1/2"	Str	32'-0"	656
b68	2	1 1/2"	Str	32'-0"	656
b69	2	1 1/2"	Str	32'-0"	656
b70	2	1 1/2"	Str	32'-0"	656
b71	2	1 1/2"	Str	32'-0"	656
b72	2	1 1/2"	Str	32'-0"	656
b73	2	1 1/2"	Str	32'-0"	656
b74	2	1 1/2"	Str	32'-0"	656
b75	2	1 1/2"	Str	32'-0"	656
b76	2	1 1/2"	Str	32'-0"	656
b77	2	1 1/2"	Str	32'-0"	656
b78	2	1 1/2"	Str	32'-0"	656
b79	2	1 1/2"	Str	32'-0"	656
b80	2	1 1/2"	Str	32'-0"	656
b81	2	1 1/2"	Str	32'-0"	656
b82	2	1 1/2"	Str	32'-0"	656
b83	2	1 1/2"	Str	32'-0"	656
b84	2	1 1/2"	Str	32'-0"	656
b85	2	1 1/2"	Str	32'-0"	656
b86	2	1 1/2"	Str	32'-0"	656
b87	2	1 1/2"	Str	32'-0"	656
b88	2	1 1/2"	Str	32'-0"	656
b89	2	1 1/2"	Str	32'-0"	656
b90	2	1 1/2"	Str	32'-0"	656
b91	2	1 1/2"	Str	32'-0"	656
b92	2	1 1/2"	Str	32'-0"	656
b93	2	1 1/2"	Str	32'-0"	656
b94	2	1 1/2"	Str	32'-0"	656
b95	2	1 1/2"	Str	32'-0"	656
b96	2	1 1/2"	Str	32'-0"	656
b97	2	1 1/2"	Str	32'-0"	656
b98	2	1 1/2"	Str	32'-0"	656
b99	2	1 1/2"	Str	32'-0"	656
b100	2	1 1/2"	Str	32'-0"	656

Reinforcing Steel Lbs. 1979
Class A Concrete C.Y. 10.7
Cross Timber Piles 16 10

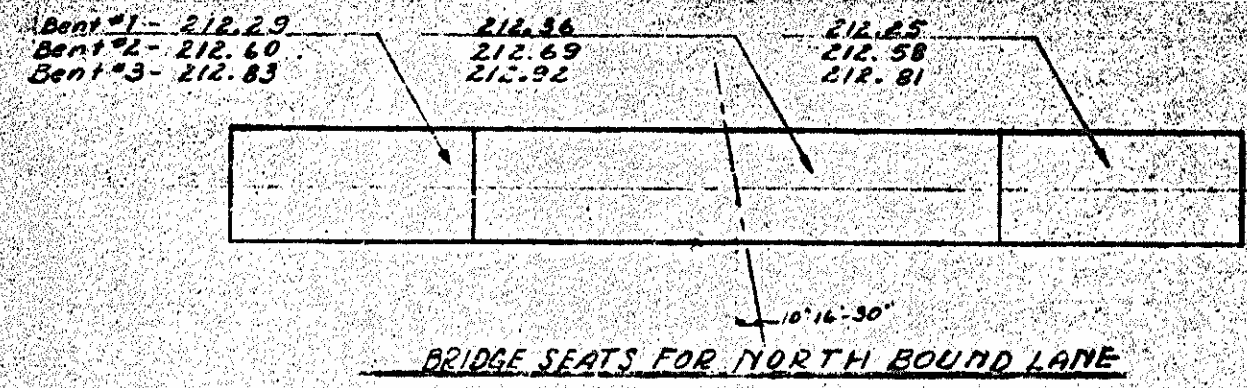
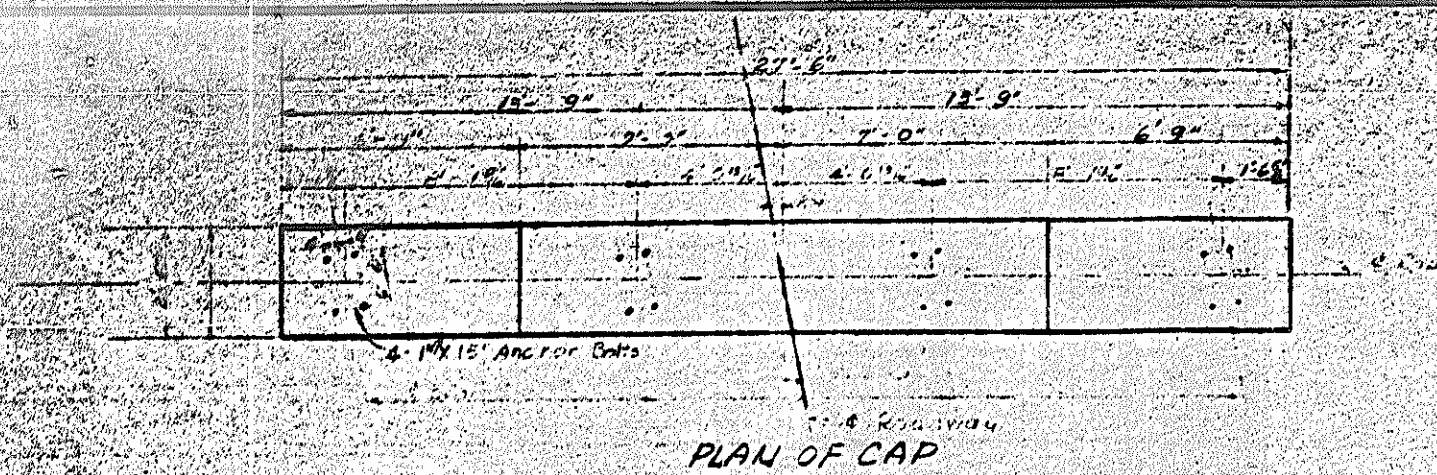


PROJECT NO. 4374
HARNETT COUNTY
STATION: 288+00 TO 288+100

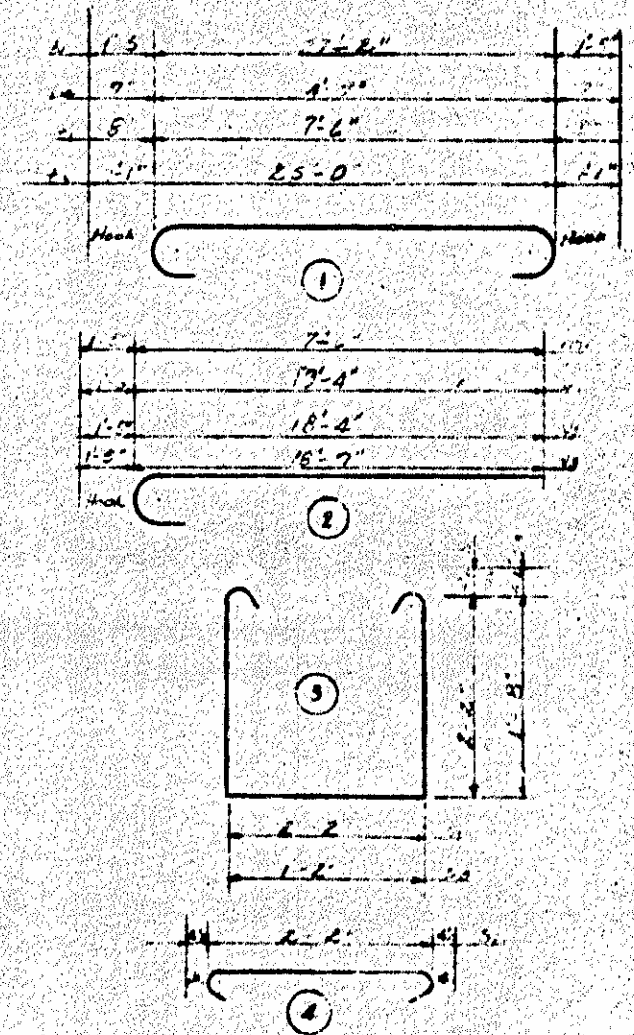
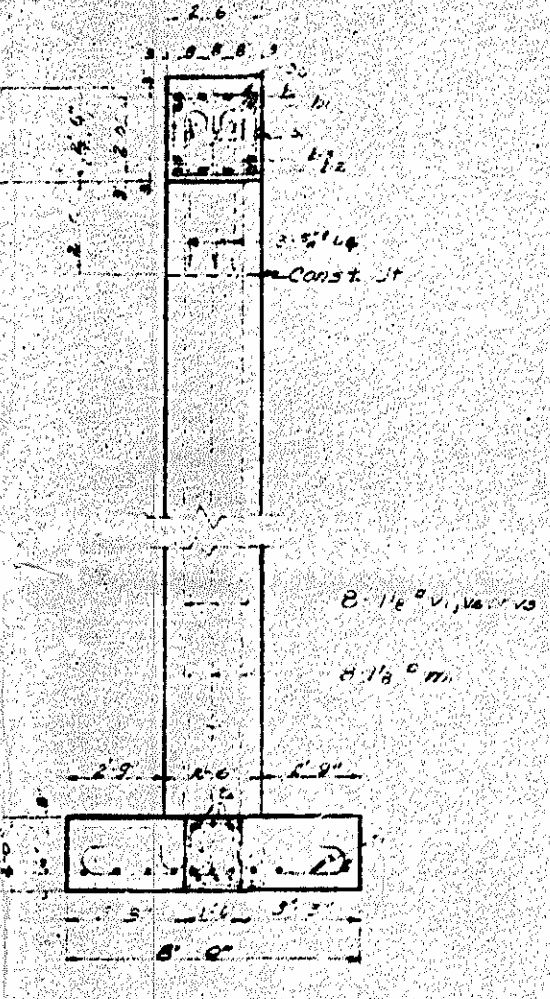
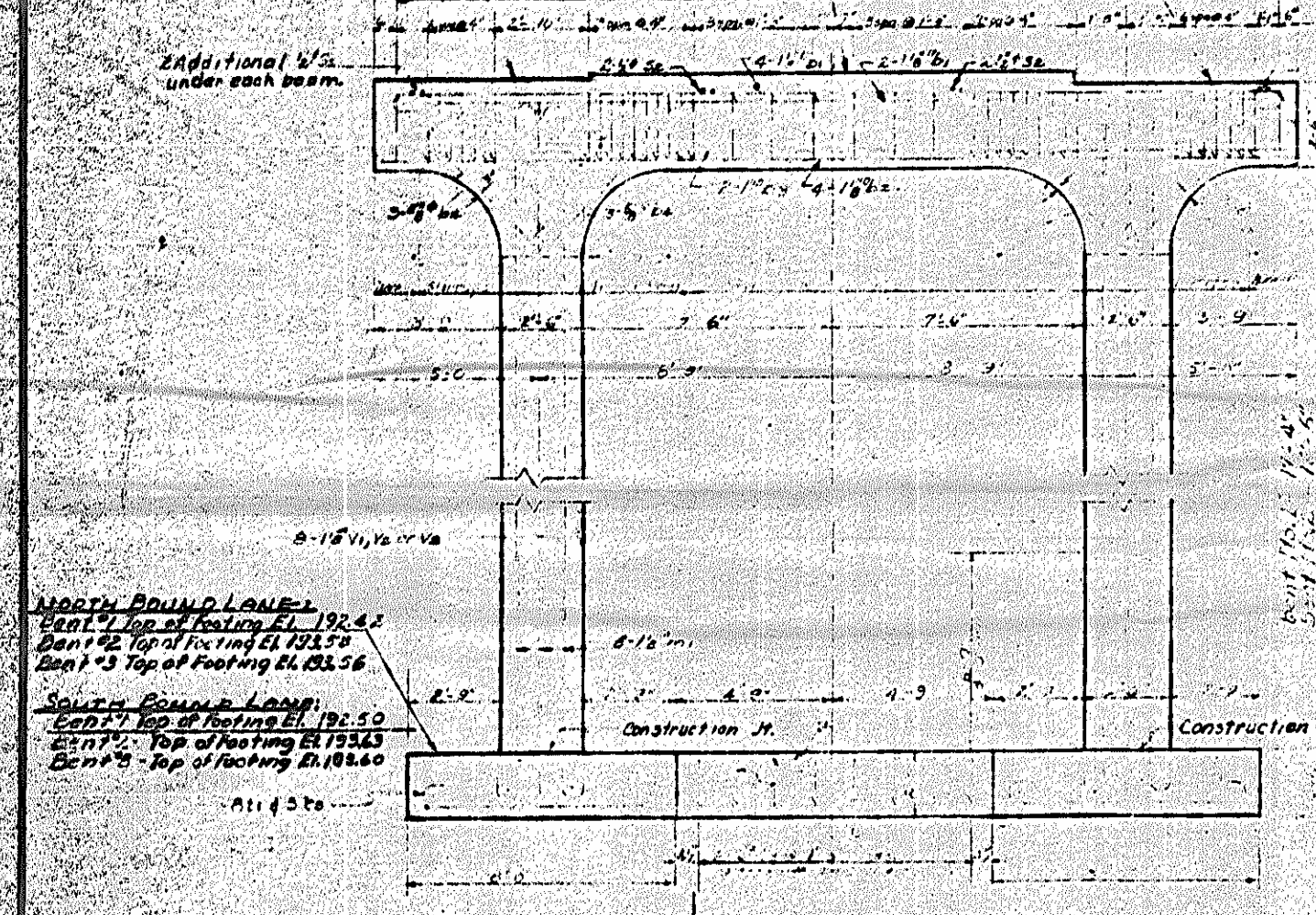
STATE OF NORTH CAROLINA
STATE HIGHWAY AND
PUBLIC WORKS COMMISSION
MADE
SUBSTRUCTURE
END BENT NO 1 & 2
NORTH & SOUTH BOUND LANE
JULY 1982

Revised to add North Bound
Lane. 5/14/82 by [Signature]
1/1/82

SHEET 3-21 OF 33



BRIDGE SEATS SOUTH BOUND LANES
 Bent No. 1 - El. 212.26
 No. 2 - El. 212.43
 No. 3 - El. 212.48

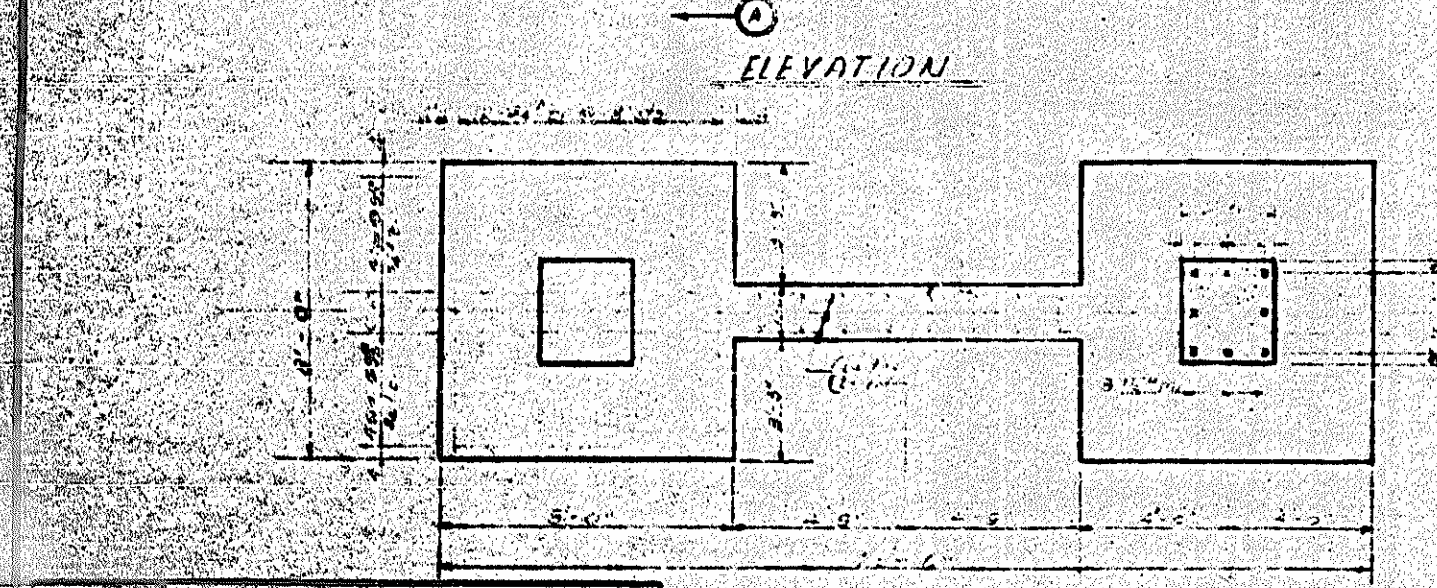


3 REQUIRED PER B

FULL OF MATERIAL FOR ONE

Bar	No.	Size	Detail	Length
B1	6	#10	1	30'
B2	4	#10	2	27'
B3	6	#10	3	27'
B4	12	#8	1	55'
m1	16	#8	2	80'
v1 (Bent #1)	16	#8	2	20'
v2 (Bent #2)	16	#8	2	19'
v3 (Bent #3)	16	#8	2	20'
s1	3	#8	1	27'
s2	3	#8	1	27'
s3	3	#8	1	25'
s4	3	#8	1	25'
s5	3	#8	1	25'
s6	3	#8	1	25'
s7	3	#8	1	25'
s8	3	#8	1	25'
s9	3	#8	1	25'
s10	3	#8	1	25'

Reinforcing Steel - Bent #1 273
 Reinforcing Steel - Bent #2 360
 Reinforcing Steel - Bent #3 460
 Class A Concrete - Bent #1 273
 Class A Concrete - Bent #2 360
 Class A Concrete - Bent #3 460



PLAN OF FOOTING

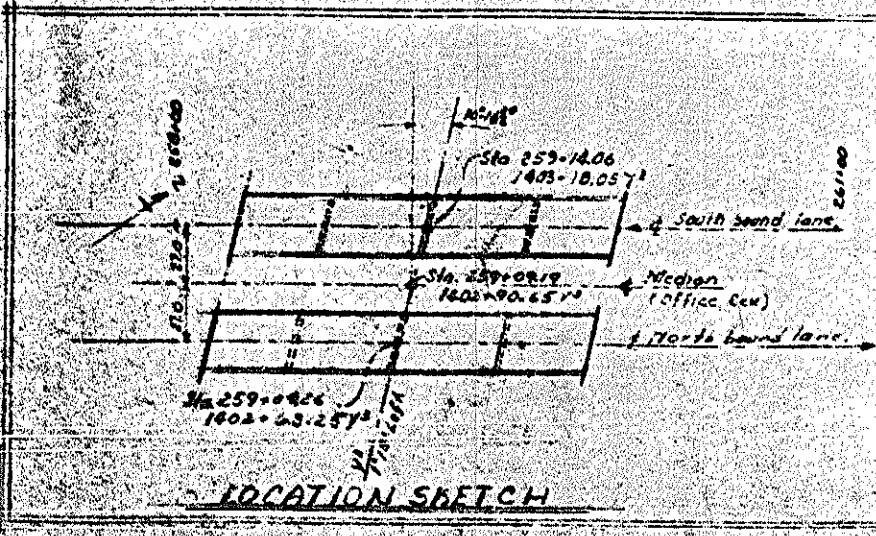
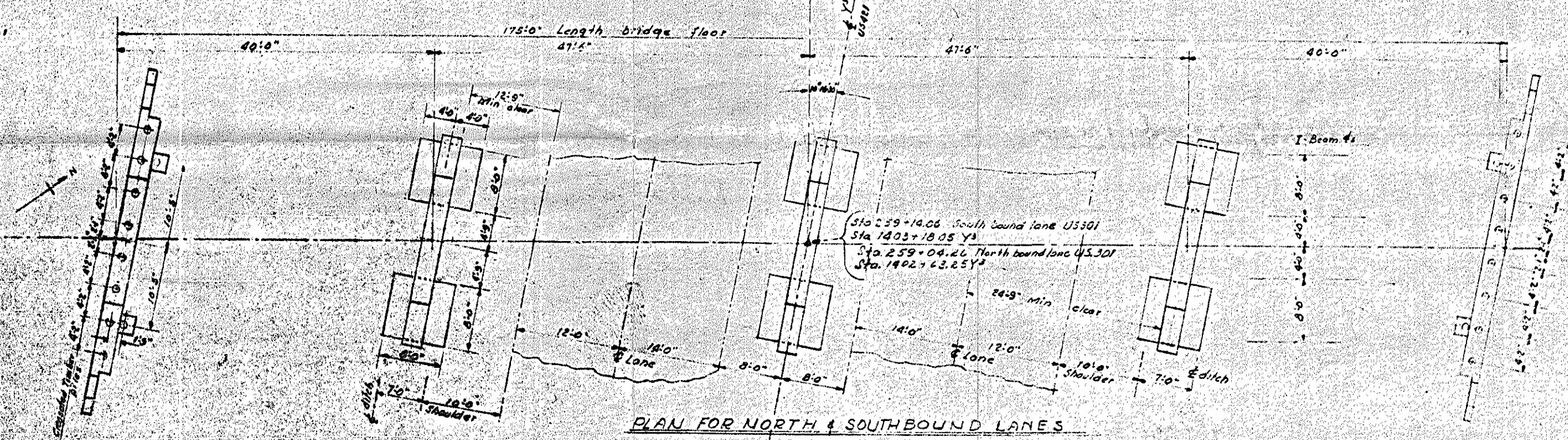
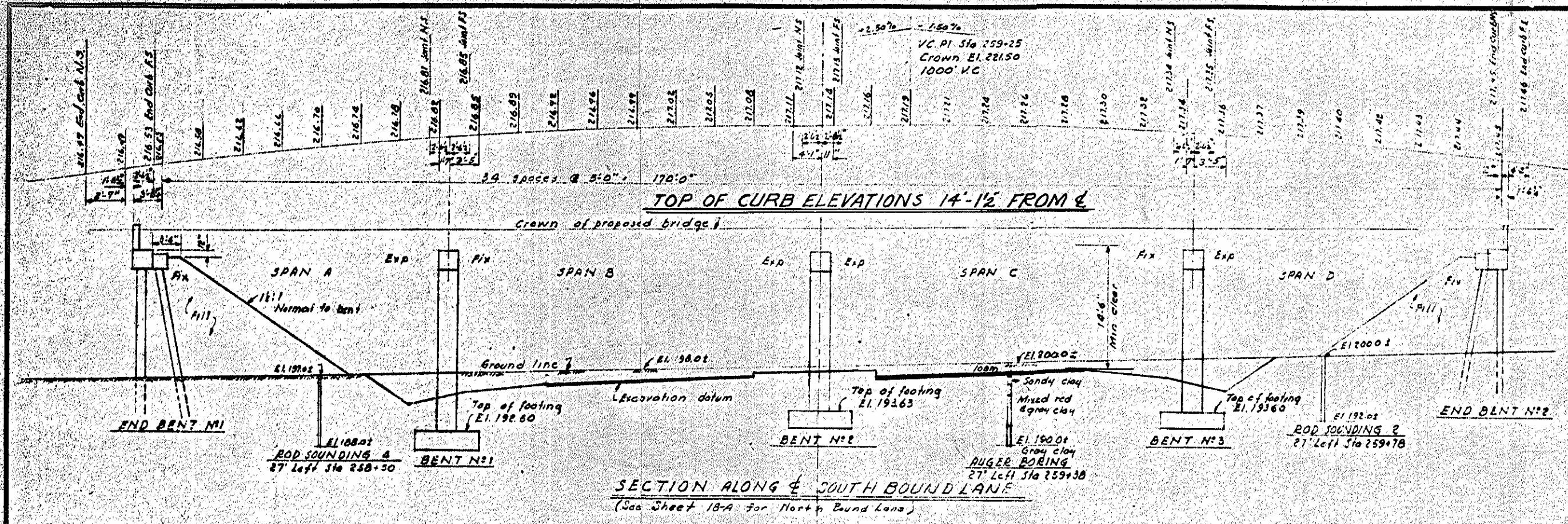
SECTION A-A

All reinforcing dimensions are for top of bars.

PROJECT NO. **HARDETT**
 STATION: **25**

STATE OF NORTH CAROLINA
 STATE HIGHWAY
 PUBLIC WORKS COMMISSION
SUBSTRUCTURE
BENTS 1, 2
NORTH & SOUTH
JUNE 1954

Revised to add bridge on North Bound Lane. 5/22/54
5-22-54



TOTAL BILL OF MATERIAL FOR ONE BRIDGE - 2 REQUIRED

Item	Reinforcing Class B		Structural Steel	Estimated Line, 21'		CRUSHED GRANITE	PILE CAPS
	Steel	Concrete		Timber Piles	Excav.		
	Lbs	Cu Yds	Approx lbs	No	Lin Ft	Cu Yds	Sq Ft
Superstructure	25497	167.7	119400				
End Bent #1	1975	10.7		10	200		242.9
Bent #1	4739	25.4				511.9	207.9
Bent #2	4470	25.0				487.9	
Bent #3	4487	25.1				487.9	
End Bent #4	1975	10.7		10	200		242.9
Approach Curb & Wall	308	8.6					10.1
Totals	53,851	268.2	119,400	20	630	1,480.5	422.8

FED. ROAD DIST. NO.	STATE	PROJECT NO.	SHEET NO.	TOTAL SHEETS
9	N. C.	4374	28	33

NOTE

Assumed live load H10S16 (44)

For other Design Data and General Notes see Sheet 5N

Timber piles to be treated to retain a minimum of 10 lbs of creosote oil per cubic foot of material.

End bent piles shall be driven thru the roadway fill

Crushed timber piles shall be driven to a minimum bearing capacity of 18 tons per pile

Test piles will not be required

Order list of piles to be based on the following:
 End Bent #1 - 28 ft
 End Bent #4 - 25 ft

Computed foundation load for bents is 24 tons per sq ft.

Excavation for Bents 1, 2 & 3 not to be started until roadway section has been graded.

Before driving piles for end bents the fill to be excavated to El. 227.0. This excavation will not be measured and paid for as a separate item. The cost to be included in the unit price of the several pay items. See Special Provisions

Traffic will be detoured over county roads during construction of this structure.

Unclassified structure excavation for Bents 1, 2 & 3 to be measured from the graded roadway section.

I CERTIFY THAT THIS BRIDGE WAS BUILT ACCORDING TO PLANS
 SIGNED: J.C.E. Feb 23, 1955
 PROJECT ENGINEER

REVISED DRAWING
 DESTROY OLD COPIES
 FEB 23 1955
 BRIDGE DEPARTMENT
 STATE HIGHWAY DIVISION
 RALEIGH, N. C.

PROJECT NO. 4374
 HARNETT COUNTY
 STATION: 259+10.06 Off Road
 E. 1st Lane

Revised to add Special Approach Curbs and Retaining Walls. By J.C.E. Feb 23, 1955

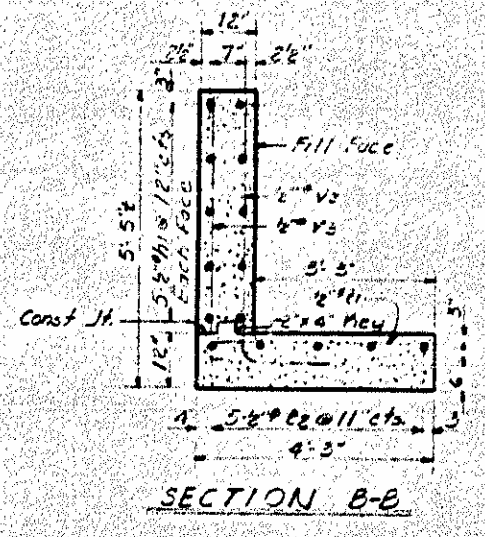
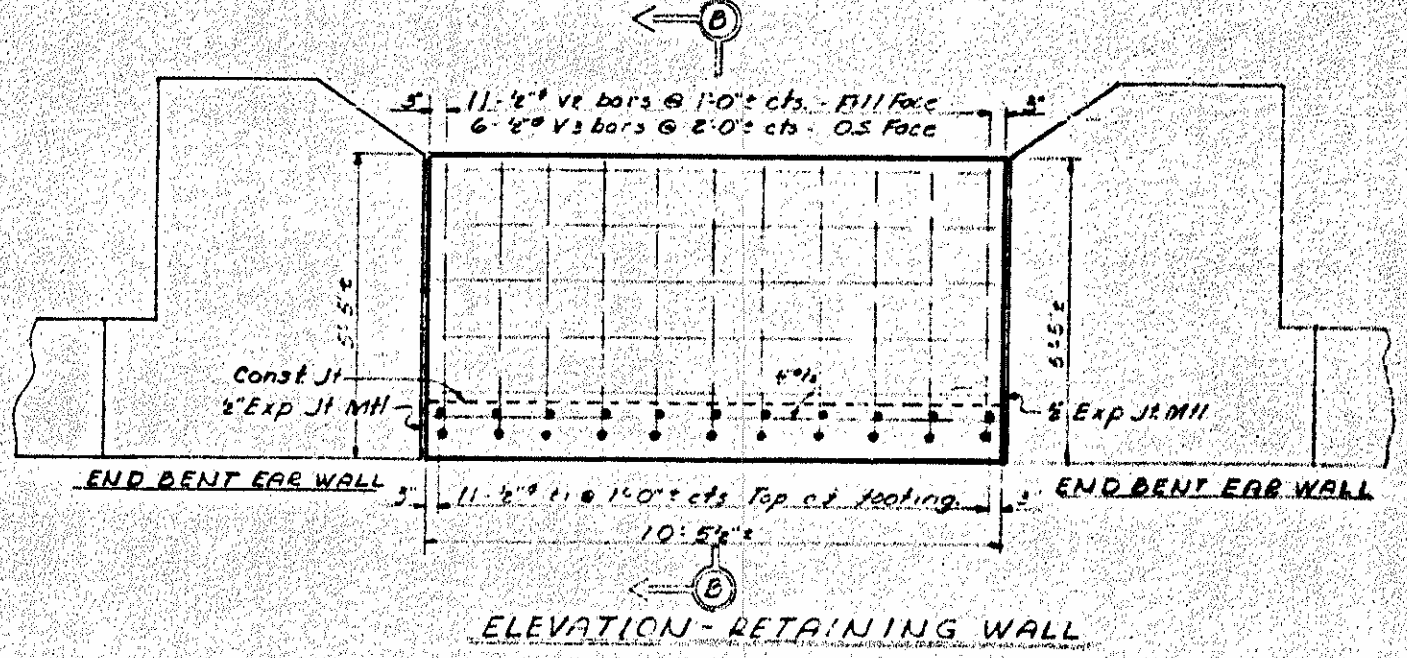
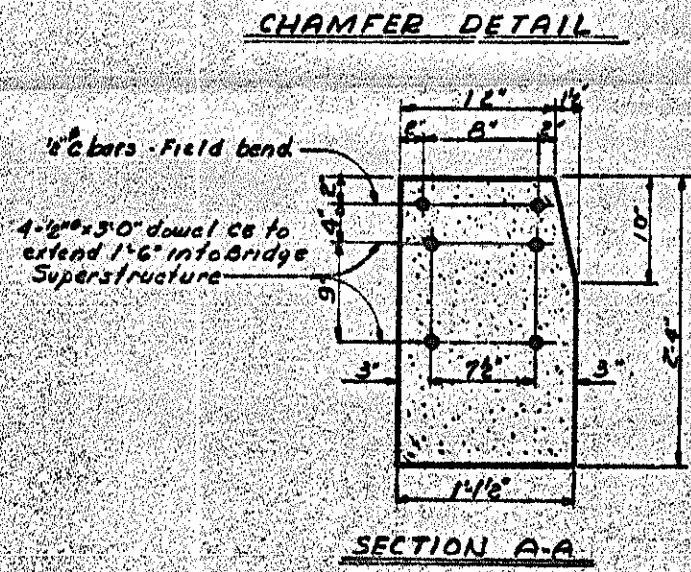
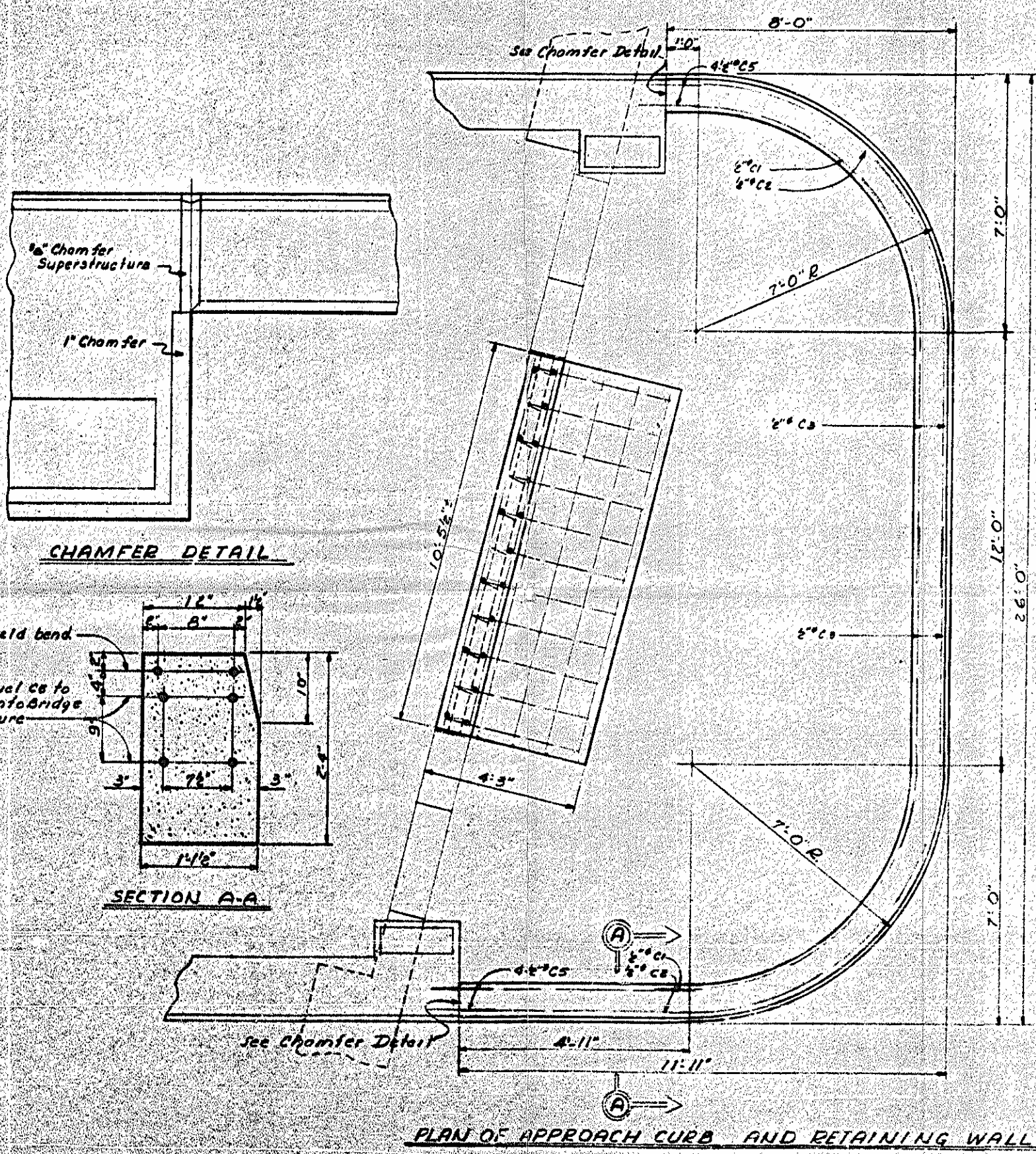
Revised to add Bridge on North Bound Lane. By J.C.E. Feb 23, 1955

STATE OF NORTH CAROLINA
 STATE HIGHWAY AND
 PUBLIC WORKS COMMISSION

GENERAL DRAWING
 BRIDGE ON U.S. 301
 OVER U.S. 421
 AT DUNN

JULY 1954

APPROVED BY: [Signature]
 STATE ENGINEER



BILL OF MATERIAL FOR ONE RETAINING WALL AND ONE APPROACH CURB, TWO OF EACH REQUIRED

ITEM	DETAIL	QTY	UNIT	PRICE	AMOUNT
1	1	2	sq. ft.	7.9	15.8
2	2	2	sq. ft.	8.6	17.2
3	3	2	sq. ft.	13.0	26.0
4	4	2	sq. ft.	5.9	11.8
5	5	2	sq. ft.	7.0	14.0
6	6	2	sq. ft.	4.0	8.0
7	7	1	sq. ft.	4.5	4.5
8	8	5	sq. ft.	10.0	50.0
9	9	2	sq. ft.	10.0	20.0
10	10	2	sq. ft.	10.0	20.0
		Reinforcing Steel	210	lb.	
		Class A Concrete	7.0	cu. yd.	

*Bars C1, C2 & C3 are shown in the bill for the original approach curbs.
Bar dimensions are out to outer bar details.

NOTE
The excavation for curbs and retaining walls will not be measured and paid for as a separate item. The entire cost for same is to be included in the unit price bid for Class "A" Concrete.

REVISION DRAWING
REVISION DRAWING
REVISION DRAWING
REVISION DRAWING

PROJECT NO. 4374
HARRIETT COUNTY
STATION 259+14.06

STATE OF NORTH CAROLINA
STATE HIGHWAY AND PUBLIC WORKS COMMISSION

REVISION-SPECIAL
APPROACH CURB AND RETAINING WALL
FEBRUARY 1956

J. H. [Signature]
J. H. [Signature]

APPROVED BY: [Signature]
DATE: [Date]