

NOTES

Assumed LL, H15-44 for other design data & general notes see SN.

Concrete:
Exposed concrete surfaces to be finished in accordance with the specifications.

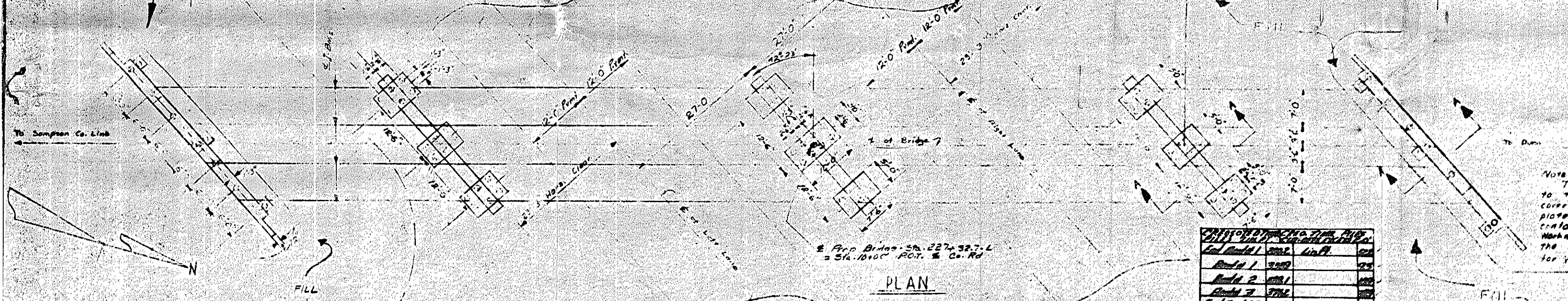
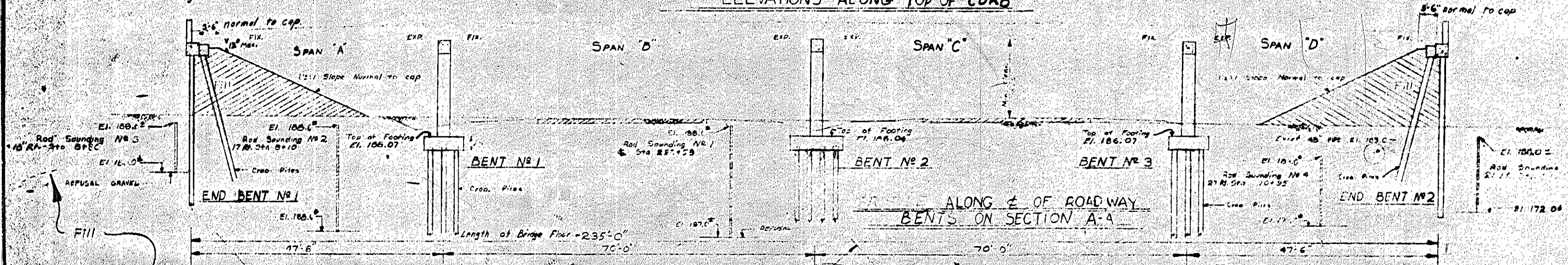
Piles:
Crested timber piles to be treated to retain a min of 15% of creosote oil per cu ft of material.
Crested timber piles to be driven to a min. bearing capacity of 15 Tons each.
Crested timber piles for End Bents #1 & 2 shall be driven thru the roadway fill.

The contractor will be required to drive test piles to determine the lengths of creosoted timber piles. See Specifications.

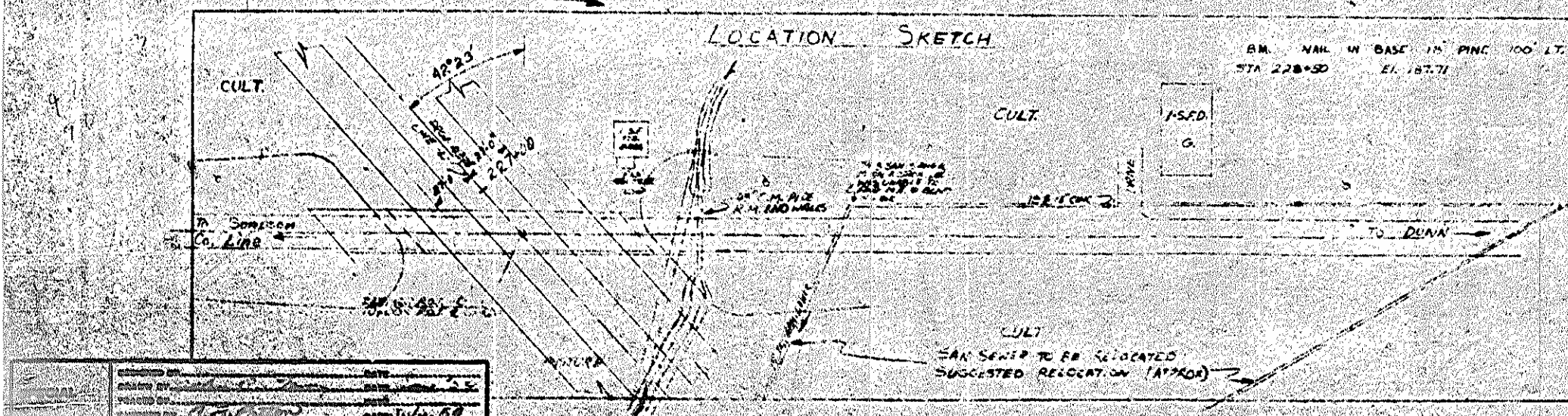
Excavation:
Before driving End Bents #1 & 2, fill to be excavated to El. 190.0. See "Special Provs." Excavation will not be measured and paid for as a separate item. The cost to be included in the unit price of the several pay items.

Traffic:
Traffic to be detoured over run around on proposed ramps during construction of this structure. See "Special Provisions."

Note:
The Contractor's attention is called to the requirement that where welded cover plates and beams shall be welded steel conforming to ASTM Designation A37-54. Workmanship to be in accordance with the revised AISC Specifications for Steel for Welded Bridges.



Item	Quantity	Unit	Price
End Bent #1	1	sq ft	100.00
Bent #1	1	sq ft	100.00
Bent #2	1	sq ft	100.00
Bent #3	1	sq ft	100.00
End Bent #2	1	sq ft	100.00
Total	5	sq ft	500.00



TOTAL BILL OF MATERIAL

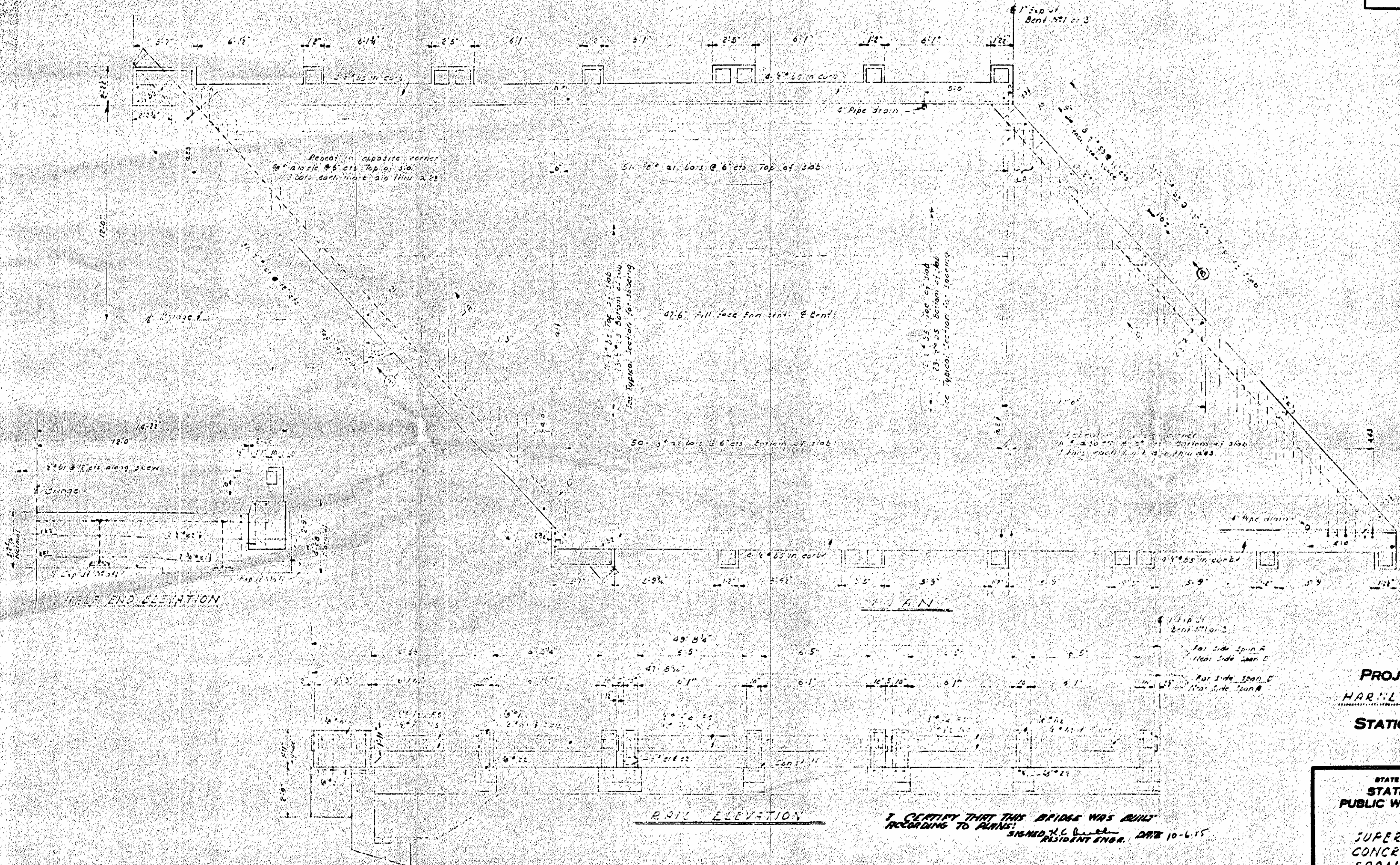
Item	Class "A"		Struct. Steel	Crest. Tim. Piles	Uncl. Str. Exc.		Unloaded Timber
	Reinf. Concrete	Steel			Cu. Yds.	sq. ft.	
Superstructure	182.7	137,801	142,500				
End Bent #1	12.8	2,639		10	350		
Bent #1	30.6	5,459		18	360		
Bent #2	31.4	5,067		20	400		
Bent #3	30.6	5,459		18	360		
End Bent #2	12.8	2,639		10	350		
Appr. Curbs	3.2	76					
Total	304.10	55,940	142,500	76	1,820		2

PROJECT NO. 4374
HARNETT COUNTY
STATION: 227+32.7

STATE OF NORTH CAROLINA
STATE HIGHWAY AND
PUBLIC WORKS COMMISSION
GENERAL DRAWING
BRIDGE OVER PROPOSED U.S. 50
ON COUNTY ROAD
BETWEEN SAMPSON CO. LINE
AND DUNN
JUNE 1954

DESIGNED BY: [Signature]
CHECKED BY: [Signature]
DATE: [Date]

REVISED 9-7-54 to show vertical curve information - A.L.B.



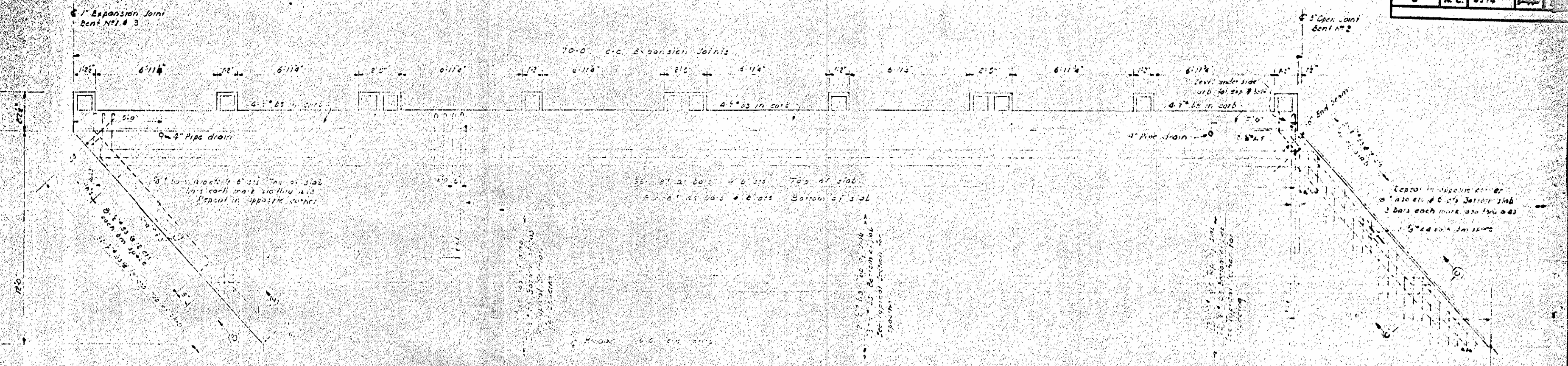
PROJECT NO. 4574
 HARRIS COUNTY
 STATION: 227-327

STATE OF NORTH CAROLINA
 STATE HIGHWAY AND
 PUBLIC WORKS COMMISSION
 SUPERSTRUCTURE
 CONCRETE PLAN
 SPAN A & D
 JUNE 1956

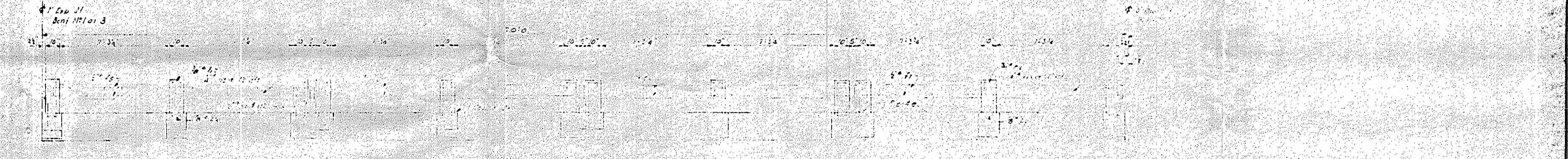
I CERTIFY THAT THIS BRIDGE WAS BUILT
 ACCORDING TO PLANS:
 SIGNED *H.C. [Signature]*
 RESIDENT ENGR. DATE 10-6-55

DESIGNED BY: *[Signature]* DATE: *[Date]*
 CHECKED BY: *[Signature]* DATE: *[Date]*

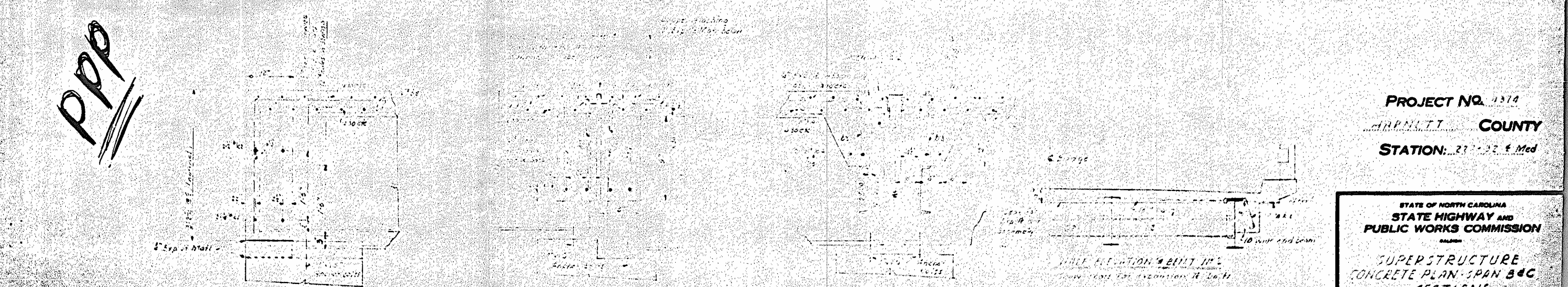
FED. ROAD DIST. NO.	STATE	PROJECT NO.	SHEET NO.	TOTAL SHEETS
0	N.C.	4374	5-11	33



PLAN SPAN B-C



PLAN SPAN C-C



PPP

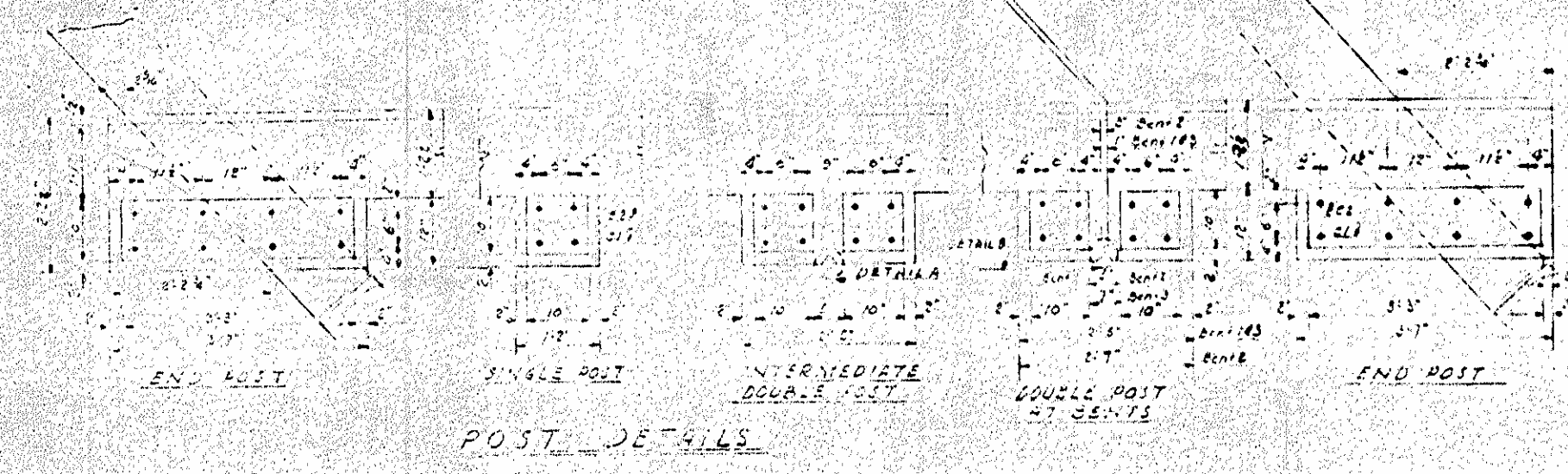
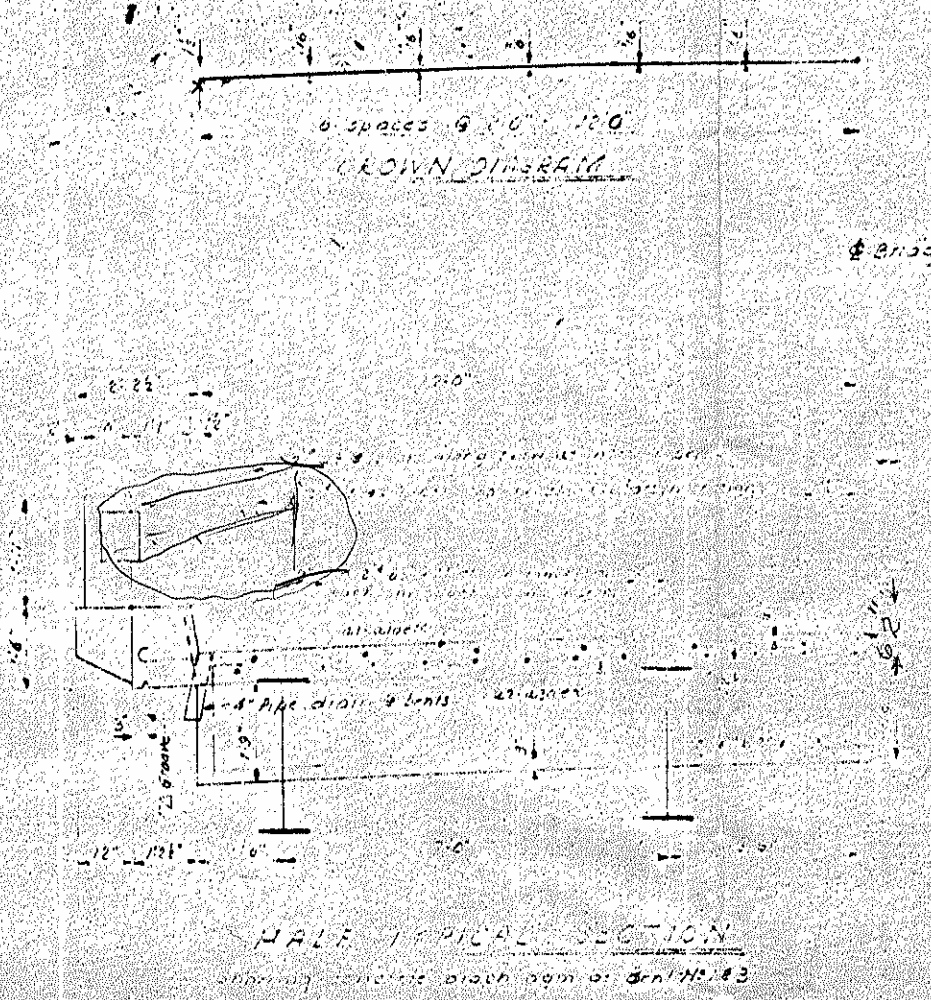
PROJECT NO. 4374
 HARRITT COUNTY
 STATION: 27+22.4 Mod

STATE OF NORTH CAROLINA
 STATE HIGHWAY AND
 PUBLIC WORKS COMMISSION
 SUPERSTRUCTURE
 CONCRETE PLAN-SPAN B-C
 SECTIONS

JUNE 1956

DESIGNED BY: [Signature]
 CHECKED BY: [Signature]

DATE	DATE
10/25/55	10/25/55
11/25/55	11/25/55



Dimensions which are shown in Typical Section and are affected by dead load deflection and the vertical curve are dimensions at & of bearing for Span B & D. Depth of slab between bearings shall be increased to compensate for the dead load deflection and the vertical curve.

Dimensions shown in Typical Section and which are affected by dead load deflection and the vertical curve are dimensions at & of span for Span B & C.

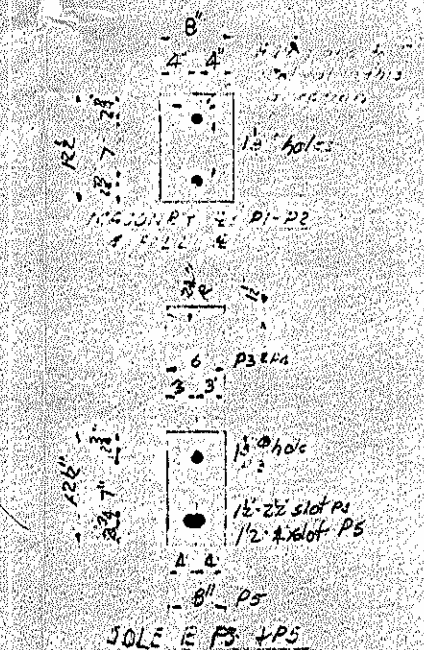
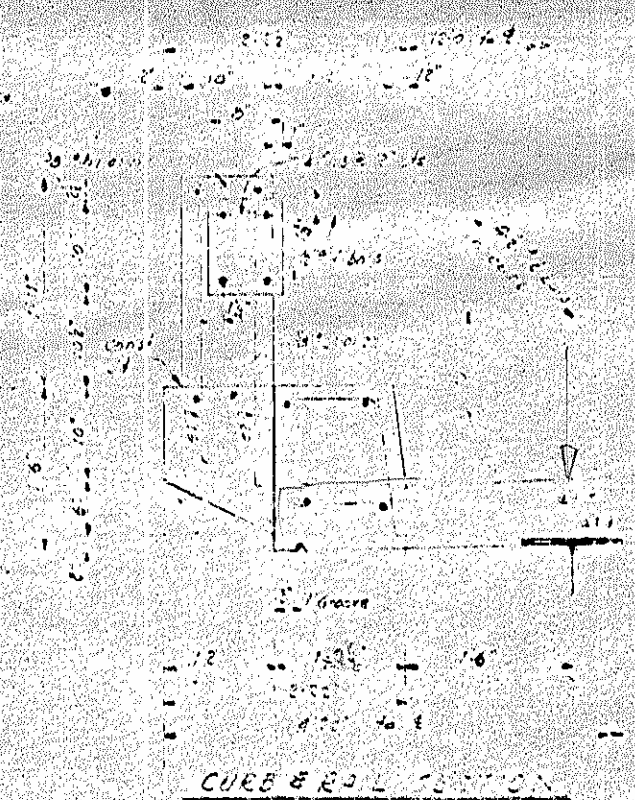
Depth of slab at & of bearing shall be increased to compensate for dead load deflection beam camber and the vertical curve and equals $4\frac{1}{2}$ " slab plus camber minus dead load deflection minus vertical curve ordinate. Any deviation from specification camber must be taken into account.

Maximum O.L. deflection

	Span			
	B	C	D	E
Exterior 3m	1/8"	1/8"	1/8"	1/8"
Interior 3m	1/16"	1/16"	1/16"	1/16"

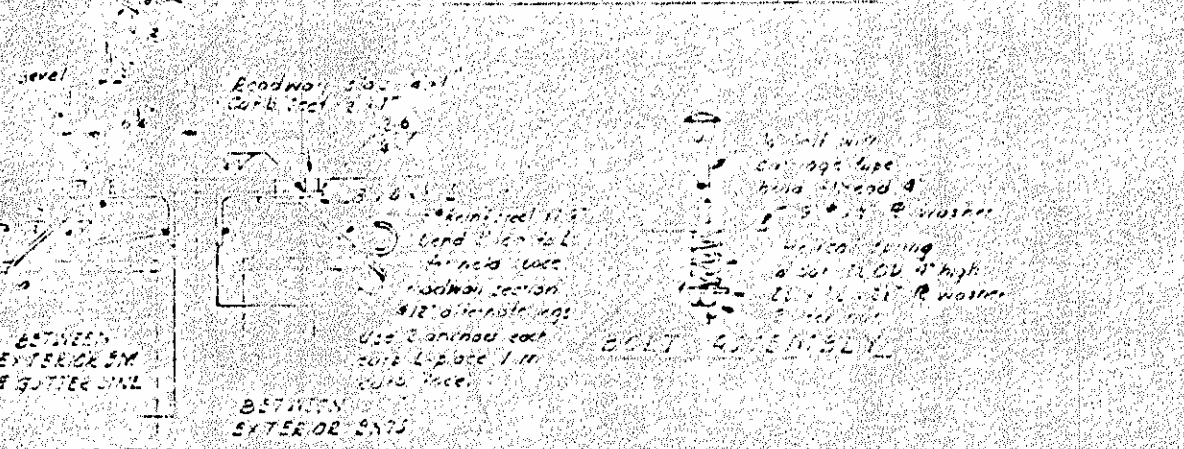
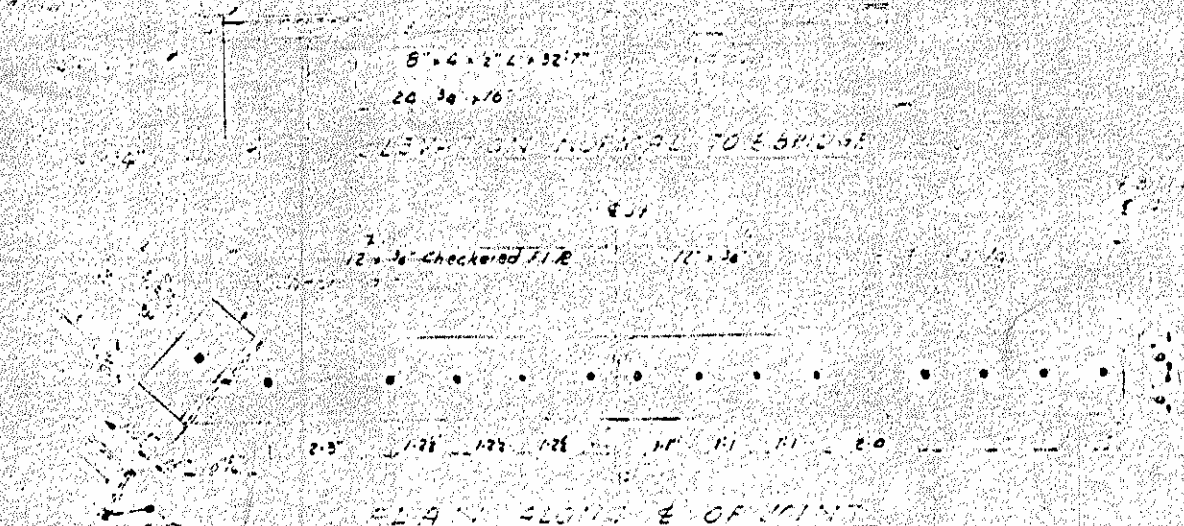
Vertical Curve ordinate $1/4"$ $1/4"$ $1/4"$ $1/4"$

Reinforcing steel shall be ALLWAY STEEL as manufactured by the Central Iron & Steel Co. of Harrisburg, Penna. or approved equal.



- DETAIL BEARING 4s
- Reinforcement: F-16, 5-1/2x12, Not straighten
 - P2-16, 5-1/2x12, None
 - P3-16, 5-1/2x12, 1/2" dia. bars
 - P4-5, 8x16x12, 1/2" dia. bars
 - P5-5, 8-1/2x12, 1/2" dia. bars
- F-11, 8
- 4-5-1/2x12
 - 2-5-7/8x12
 - 2-5-9/16x12
 - 2-5-1/2x12

4s may be combined with majority 5s & 6s not required thickness 4s & 5s



See Concrete Section w/ Bent 572 and Typical Section for detail drawings

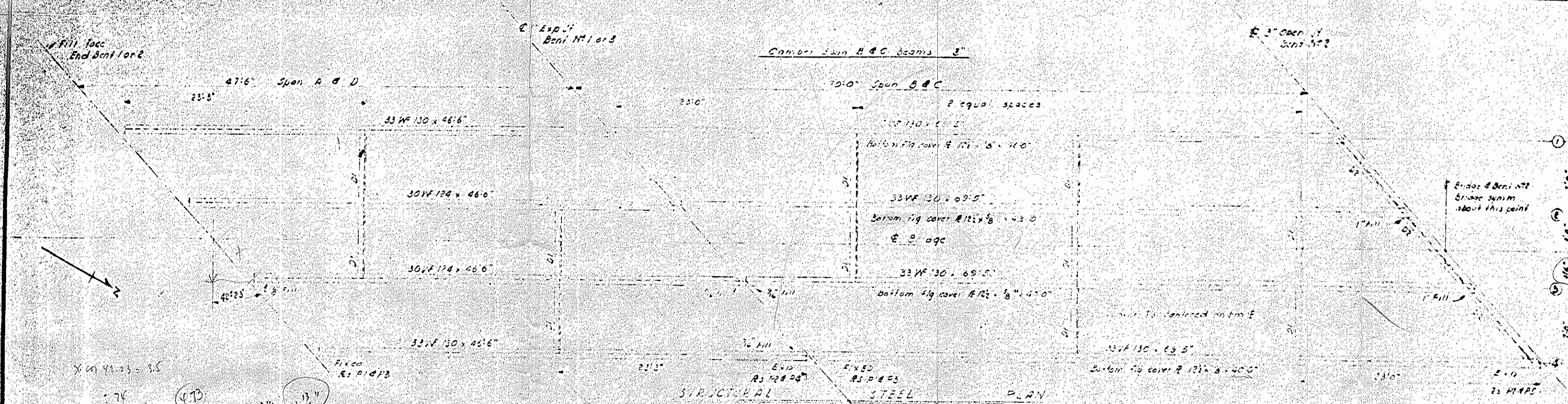
PROJECT NO. 4314
HARRITT COUNTY
STATION: 277+2.7

STATE OF NORTH CAROLINA
STATE HIGHWAY AND
PUBLIC WORKS COMMISSION
SUPERSTRUCTURE
CONCRETE TYPICAL SECTION
POST DETAIL
EXPANSION & ASSEMBLY
BEARING PLATES
JUNE 1954

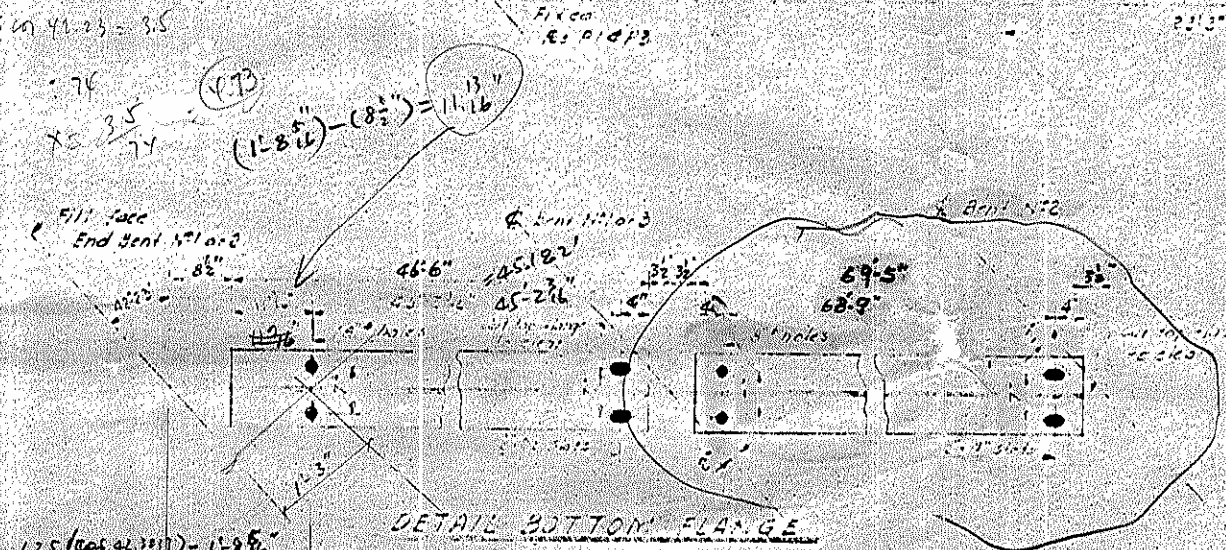
DESIGNED BY: [Signature]
APPROVED BY: [Signature]

DESIGNED BY	DATE
CHECKED BY	DATE
APPROVED BY	DATE
DATE	DATE

FED. ROAD DIST. NO.	STATE	PROJECT NO.	SHEET NO.
3	N.C.	3374	14

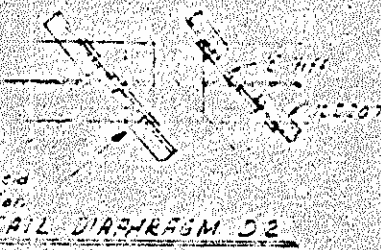
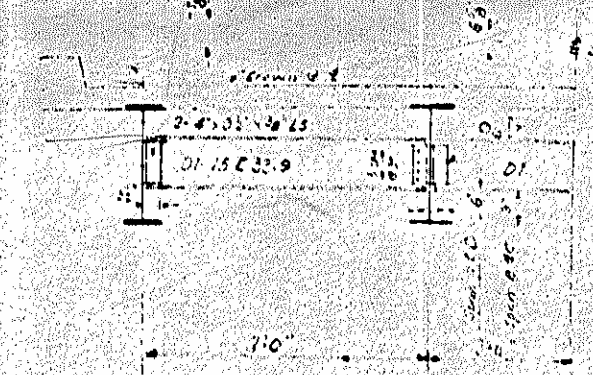
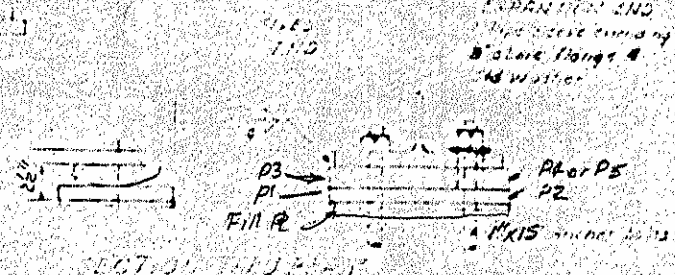


STRUCTURAL STEEL PLAN



- 1- 13'10" @ 6", 9 sps @ 10", 6 sps @ 11", 5 sps @ 13", 3 equal spaces, 5 sps @ 15", 6 sps @ 20", 3 sps @ 10", 15 sps @ 12" interior bms 243
- 3- 20' sps @ 6", 4 sps @ 9", 10 sps @ 12", 4 @ 13", 4 equal sps, 4 sps @ 13", 5 sps @ 15", 4 sps @ 16' sps @ 6"
- 4- 26'4" @ 9" g

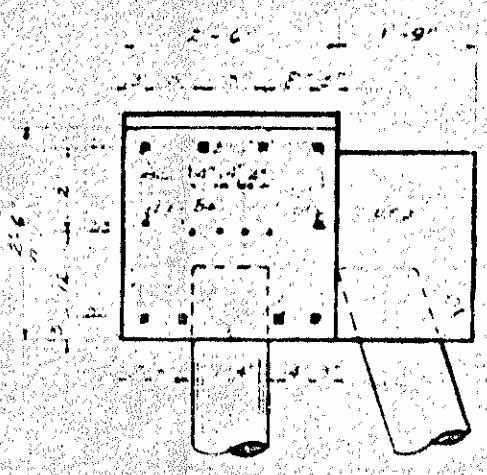
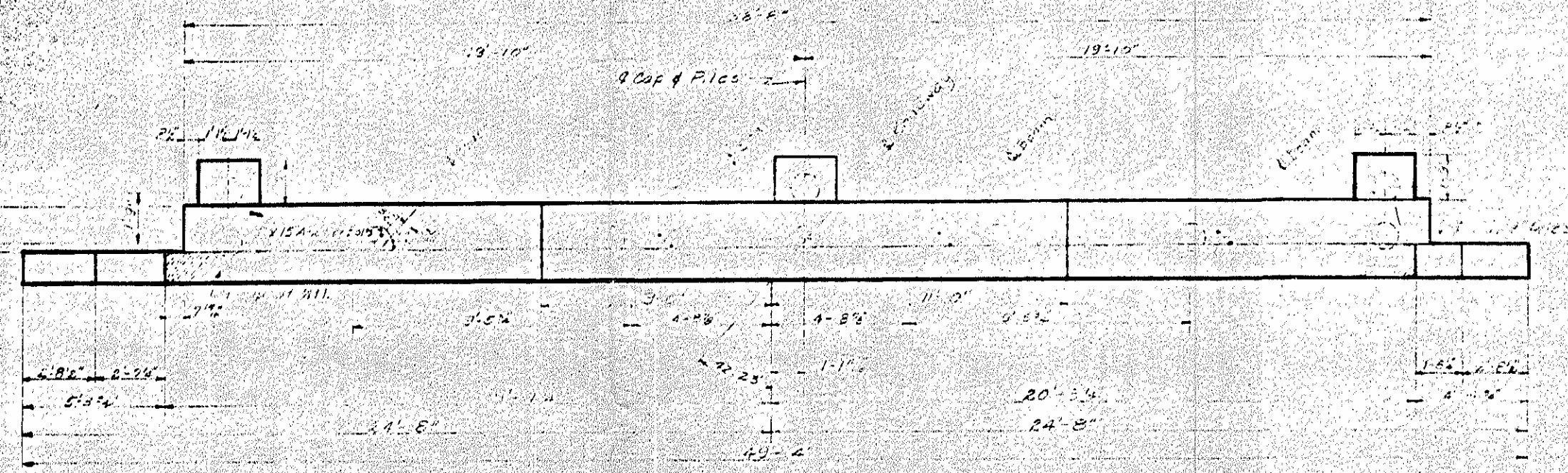
SHRIMP CONNECTORS SPAN B & C



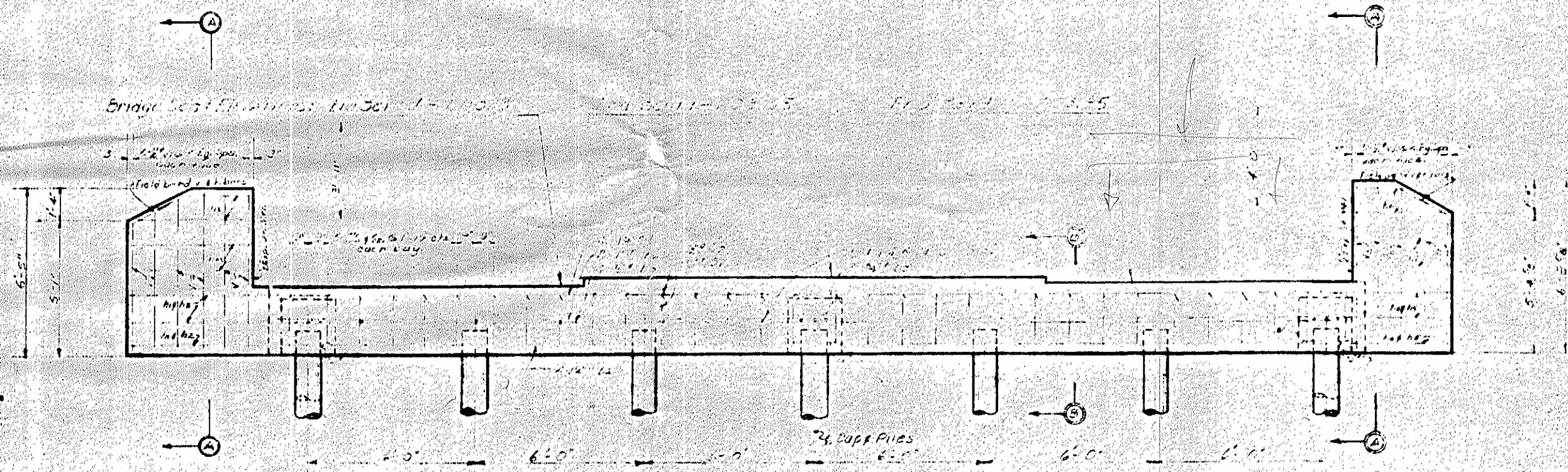
PROJECT NO. 6374
 HARNATT COUNTY
 STATION: 227+32.7

STATE OF NORTH CAROLINA
 STATE HIGHWAY AND
 PUBLIC WORKS COMMISSION
 SUPERSTRUCTURE
 STRUCTURAL STEEL
 PLAN & DETAILS

JUNE 1958



Crested Timber Pile to be driven to minimum bearing capacity of 18 tons per pile.
 *Concrete displaced by pile heads has been deducted.
 †Center 5' 11 1/2"

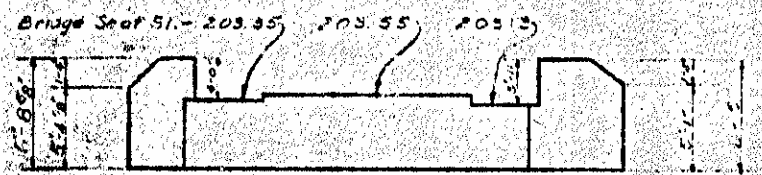


2 REQUIRED

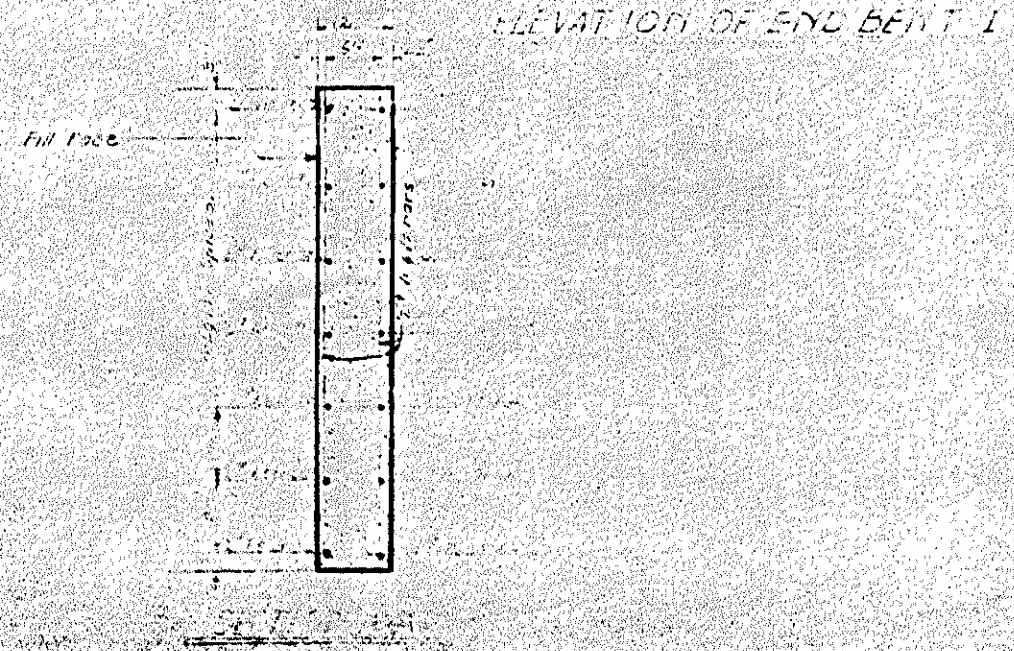
BAR TYPES	BILL OF MATERIAL FOR END BENT					
	NO. OF	SIZE	TYPE	LENGTH	WEIGHT	
1	4	1 1/2"	1	41' 4"	528	
2	4	1 1/2"	2	38' 2"	411	
3	8	2"	3	40' 0"	107	
4	10	2"	4	2' 7"	15	
5	2	2"	5	5' 8"	71	
6	2	1"	5	45' 6"	206	
7	2	2"	1	7' 2"	155	
8	2	2"	1	8' 1"	62	
9	3	2"	1	10' 11"	49	
10	2	1"	5	8' 6"	68	
11	2	2"	2	2' 0"	18	
12	8	2"	2	5' 0"	27	
13	1	1"	2	2' 0"	50	
14	2	2"	2	1' 0"	10	
15	8	2"	2	4' 0"	25	
16	16	2"	2	6' 8"	50	
17	2	2"	2	6' 8"	49	
Total weight of steel					2699	lbs
Weight of concrete					12.53	cuyd
Total weight of steel					10.18	cuyd

but dimensions are not to suit.

PROJECT NO. 4374
 HARNETT COUNTY
 STATION: 227+32.7



Sketch, Section Pass End Bent No. 2, Showing Bridge Seat Elevation Reinforcing Same as End Bent No. 1



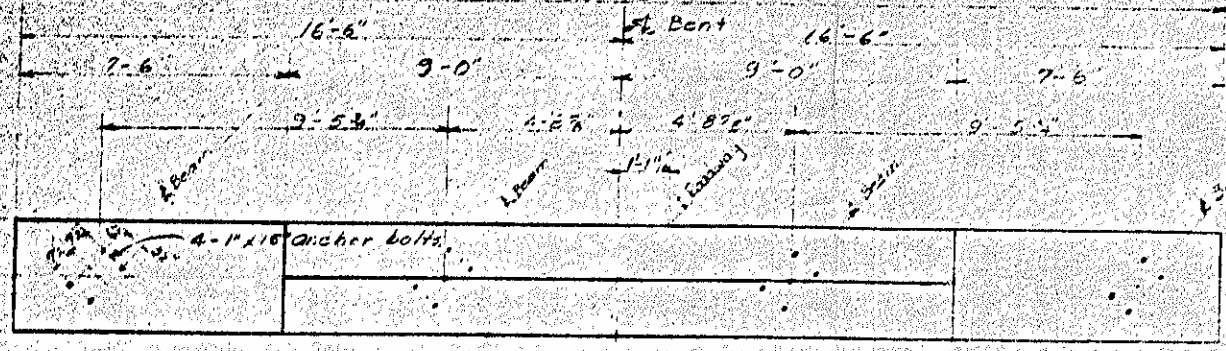
Checked by: _____
 Drawn by: _____
 Prepared by: _____
 Approved by: _____

STATE OF NORTH CAROLINA
 STATE HIGHWAY AND
 PUBLIC WORKS COMMISSION

SUBSTRUCTURE
 END BENT NO. 1 & 2

JUNE 1954

APPROVED BY: _____
 STATE HIGHWAY ENGINEER

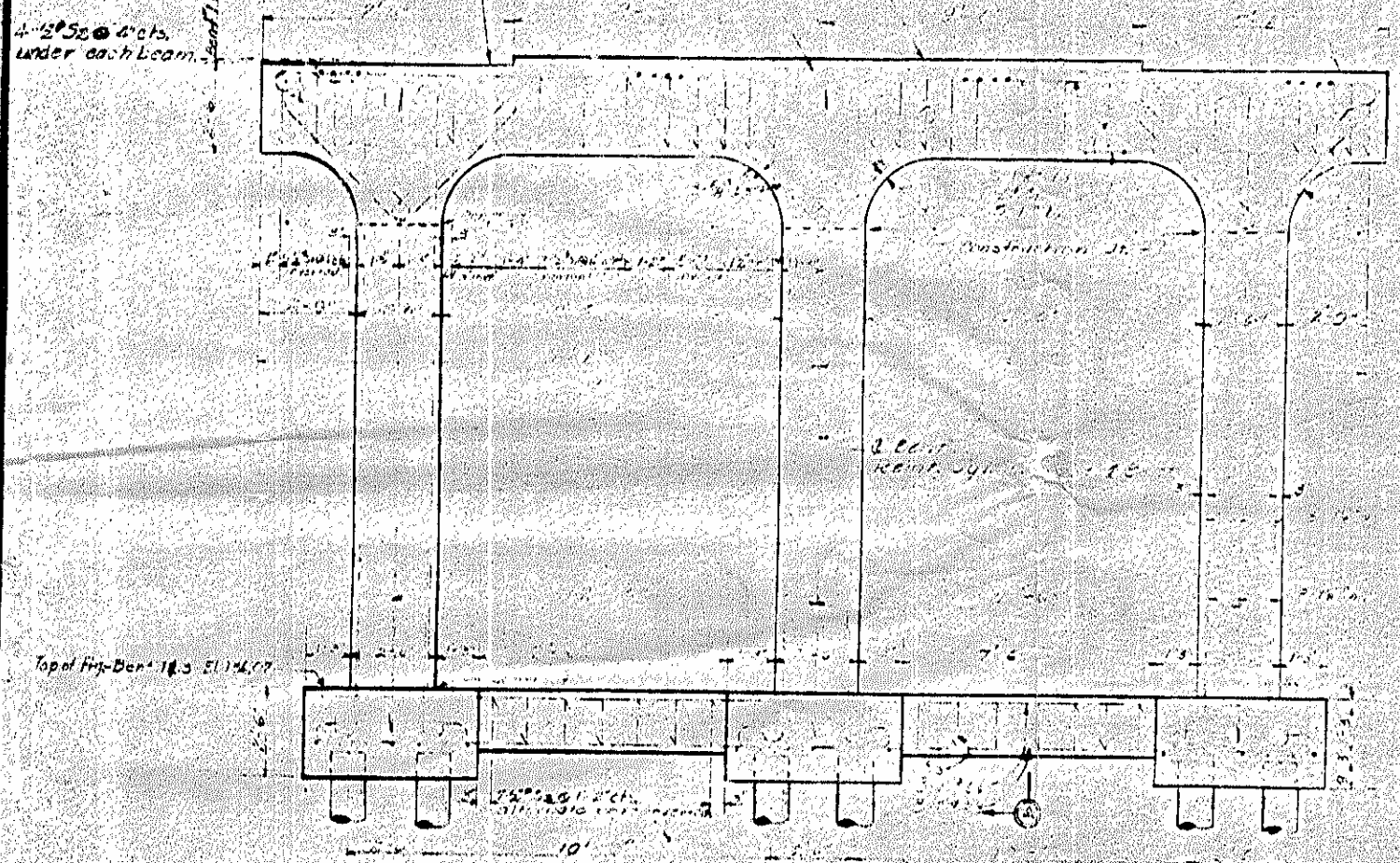


PLAN - BENT NO. 1

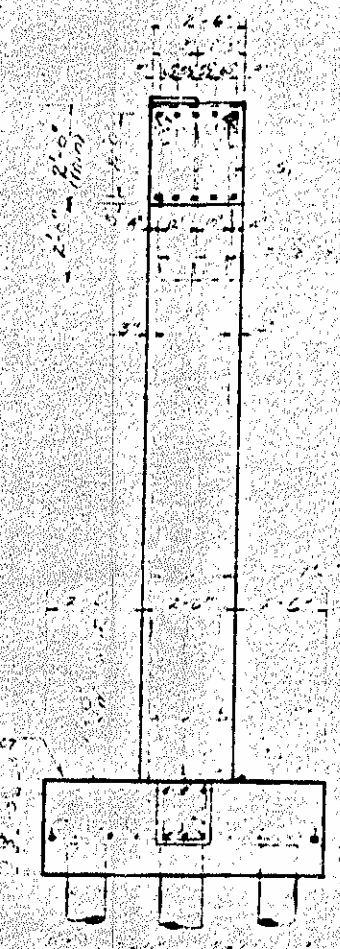
El. 203.70	El. 203.69	El. 203.57
El. 203.98		

PLAN - BENT NO. 3

Bridge Seat Elevations: Bent 1 - El. 203.57 Bent 3 - El. 203.70 Bent 113 - El. 203.69 Bent 114 - El. 203.98 Bent 115 - El. 203.70 Bent 116 - El. 203.57

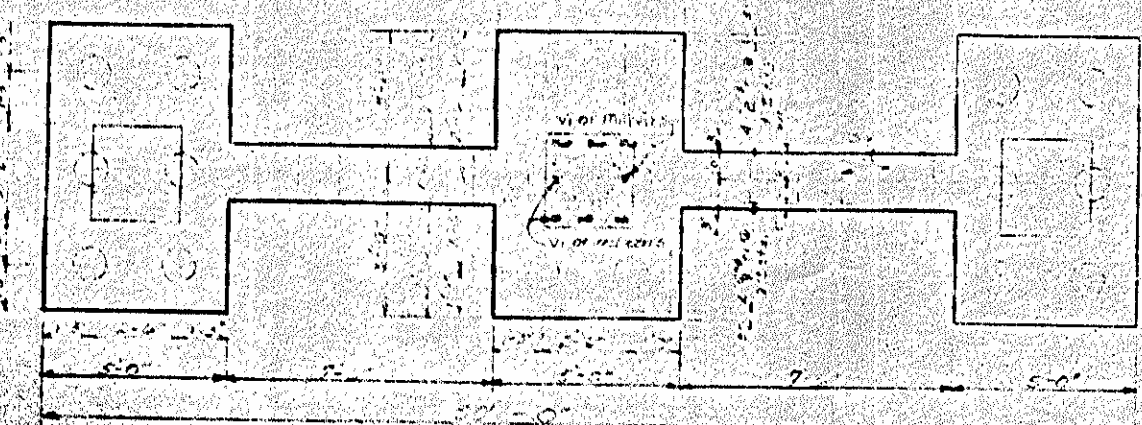


ELEVATION BENT NO. 1 & 3



SECTION A-A

BAR TYPES		BILL OF MATERIAL - ONE BENT				
Qty	Size	Qty	Size	Qty	Weight	
1	1/2"	2	1/2"	2	26.4	760
2	3/4"	2	3/4"	2	51.2	552
3	1"	2	1"	2	51.2	108
4	1 1/4"	2	1 1/4"	2	101.6	281
5	1 1/2"	2	1 1/2"	2	127.2	136
6	2"	2	2"	2	151.2	81
7	2 1/2"	2	2 1/2"	2	175.2	44
8	3"	2	3"	2	201.6	142
9	3 1/2"	2	3 1/2"	2	227.2	378
10	4"	2	4"	2	252.8	254
11	4 1/2"	2	4 1/2"	2	278.4	236
12	5"	2	5"	2	304.0	1708
		Reinforcing Steel			5659	463
		Class A Concrete			30.6	1033
		Pre-cast Timber piles			18	116



PLAN OF FOOTING - BENT 1 & 3

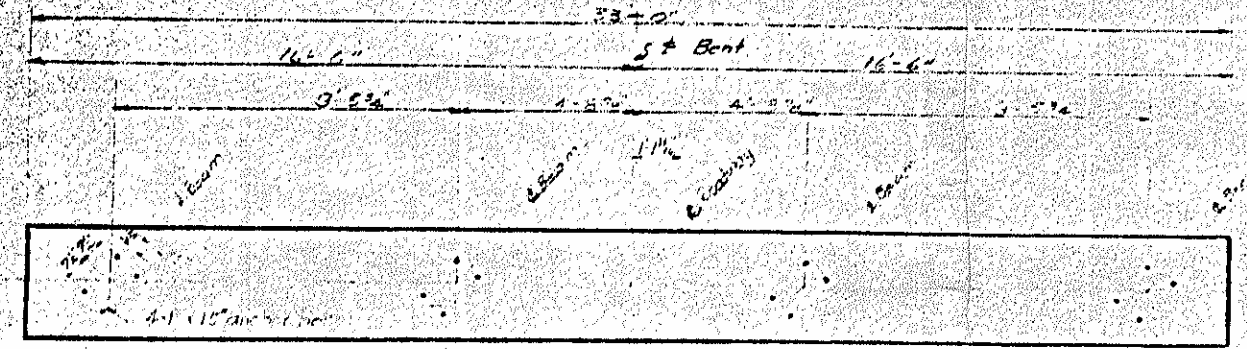
PROJECT NO. 4374
 HARNETT COUNTY
 STATION: 227+22.7

STATE OF NORTH CAROLINA
 STATE HIGHWAY AND
 PUBLIC WORKS COMMISSION

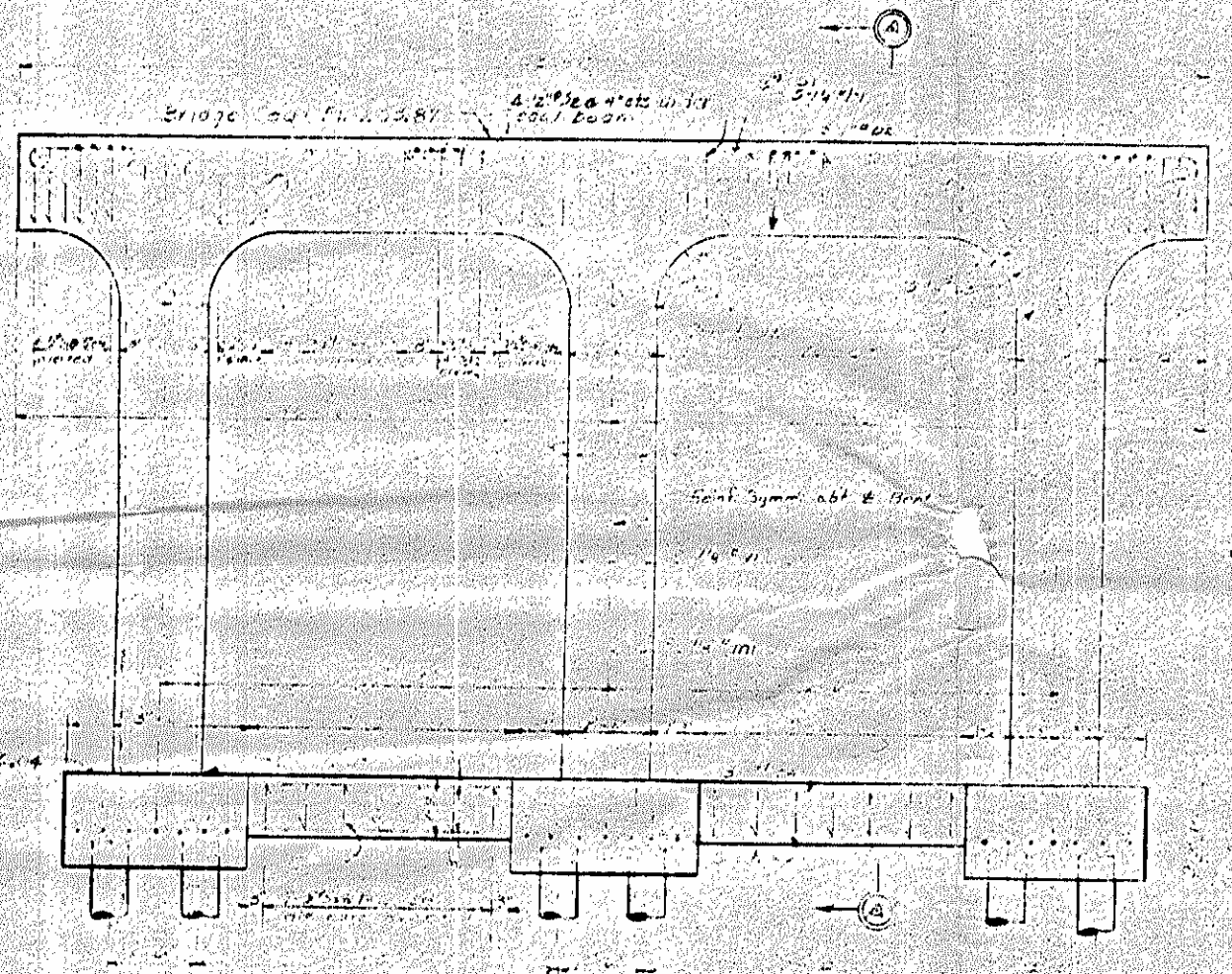
SUBSTRUCTURE
 BENT NO. 1 & 3

JUNE 1954

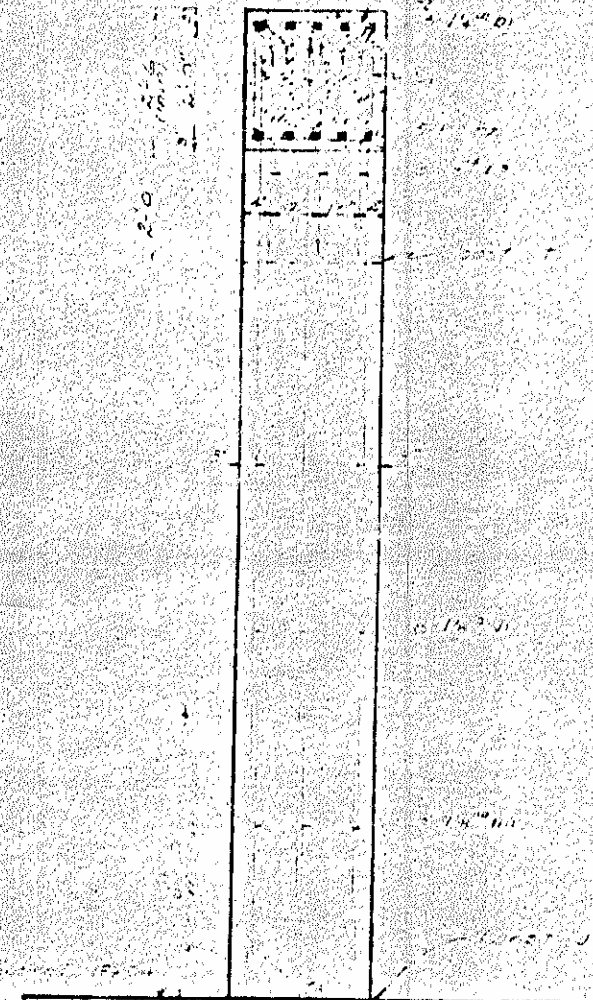
DESIGNED BY: [Signature]
 APPROVED BY: [Signature]



PLAN - BENT 2



ELEVATION - BENT 2



SECTION - BENT 2

Ordinary timber piles are to be driven to the minimum bearing capacity of 10 tons per pile.
 Concrete cap placed on pile heads 105' when delivered.

BAR TYPES		BILL OF MATERIAL - BENT 2					
1#	2'-6"	200	20	500	100	100	100
2#	2'-0"	160	5	16	5	30	148
3#	4'-6"	20	1	1	20	20	553
4#	2'-0"	160	10	10	5	5	108
5#	2'-0"	160	20	12	4	6	920
6#	2'-0"	160	20	2	1	2	175
7#	2'-0"	160	12	2	3	2	52
8#	2'-0"	160	14	2	2	2	48
9#	2'-0"	160	20	2	5	2	165
10#	2'-0"	160	12	2	5	2	248
11#	2'-0"	160	2	10	2	2	250
12#	2'-0"	160	2	1	2	2	256
13#	2'-0"	160	8	2	5	2	249
14#	2'-0"	160	20	12	14	14	1946
Parting Steel		5867 LBS.					
Misc. A Bars		91.4 Cu Yds.					
Grouted Timber Piles		27 No.					

PROJECT NO. 4374
 HARTLET COUNTY
 STATION: 2+32.7

STATE OF NORTH CAROLINA
 STATE HIGHWAY AND
 PUBLIC WORKS COMMISSION

SUBSTRUCTURE
 BENT NO. 2

JULIE 1954

DESIGNED BY: [Signature]
 DRAWN BY: [Signature]

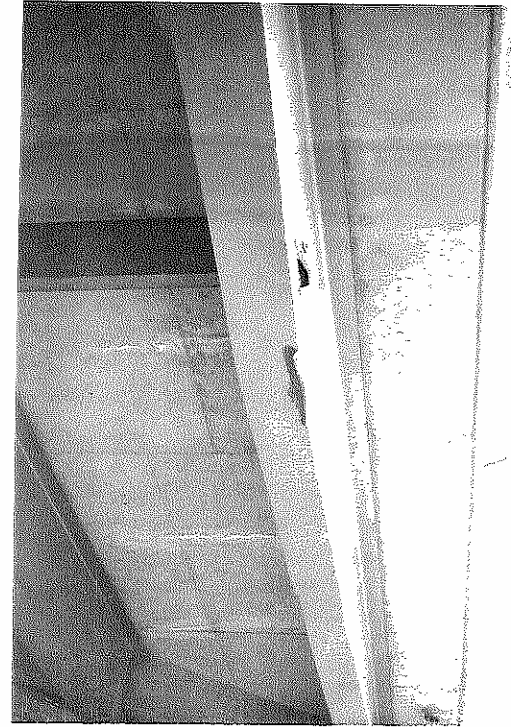
APPROVED BY: [Signature] DATE: [Date]
 CHECKED BY: [Signature] DATE: [Date]

PLAN OF FOOTINGS

Str. No 1793-45-30 ~ Harnett County



Span 3 - Beam B1



Split web

3/19/82 RCM

Redstone - Harvett - Investigated the last
resident