

NOTES

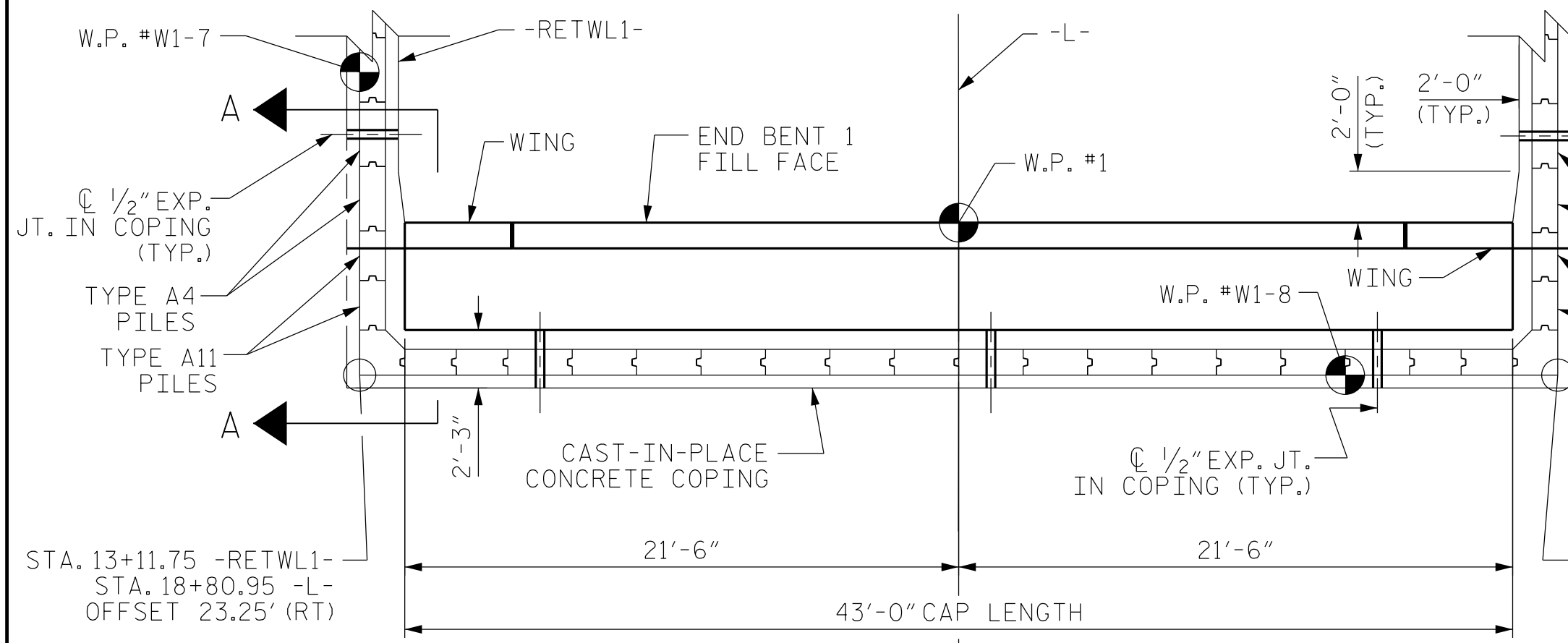
A 1/2" EXPANSION JOINT SHALL BE LOCATED IN THE COPING AT THE CENTERLINE OF PILES AS SHOWN. ADDITIONAL 1/2" EXPANSION JOINTS SHALL BE LOCATED ALONG THE LENGTH OF THE COPING FOR EACH WALL AT 30'-0" MAXIMUM CENTERS. SEE "PLAN OF EXPANSION JOINTS IN COPING", SHEET 5 OF 16.

GROOVED CONTRACTION JOINTS, 1/2" IN DEPTH, SHALL BE TOOLED IN ALL EXPOSED FACES OF THE CONCRETE COPING AND IN ACCORDANCE WITH ARTICLE 825-10(B) OF THE STANDARD SPECIFICATIONS. A CONTRACTION JOINT SHALL BE LOCATED AT EACH THIRD POINT BETWEEN COPING EXPANSION JOINTS. ONLY ONE CONTRACTION JOINT IS REQUIRED AT MIDPOINT OF COPING SEGMENTS LESS THAN 20 FEET IN LENGTH AND NO CONTRACTION JOINTS ARE REQUIRED FOR THOSE SEGMENTS LESS THAN 10 FEET IN LENGTH.

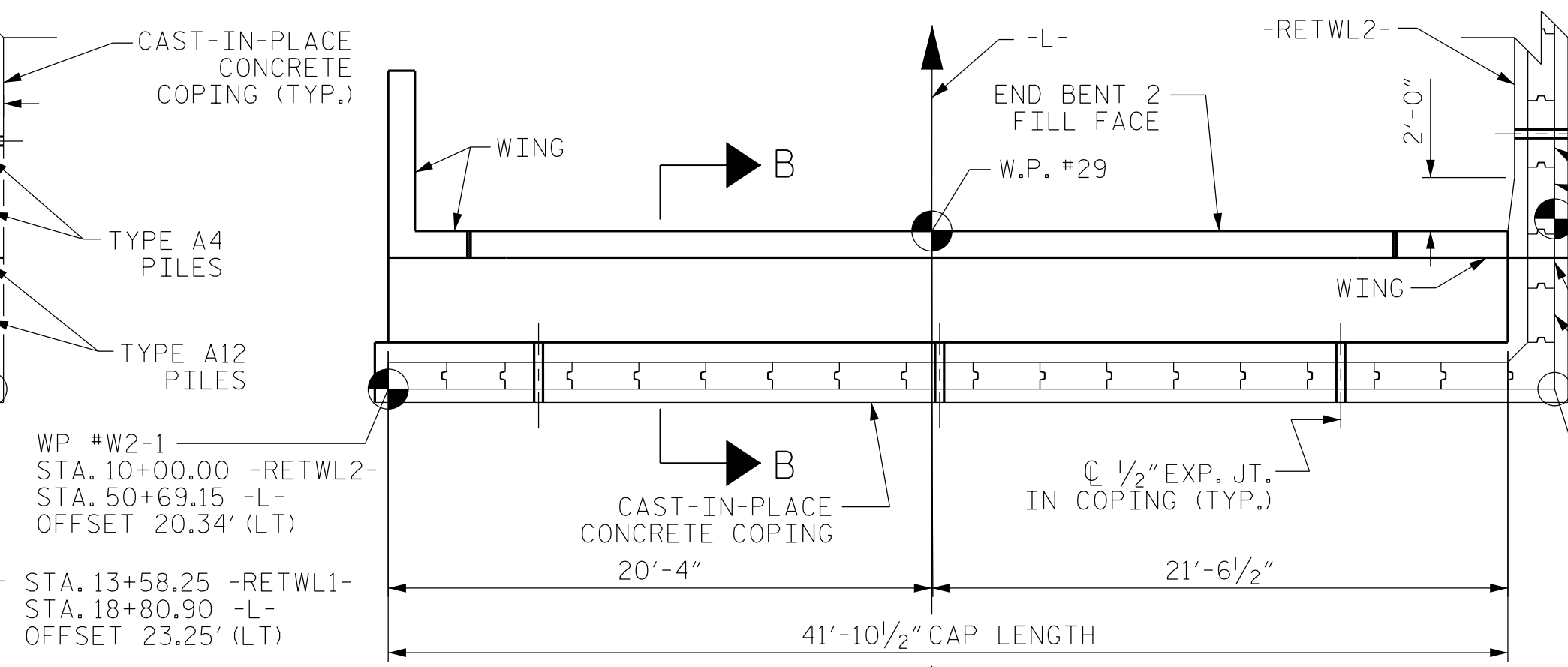
THE PRESTRESSED CONCRETE SHEET PILES SHALL BE DRIVEN PRIOR TO PLACEMENT OF THE END BENT CAPS. THE CAST-IN-PLACE CONCRETE FOR THE COPING SHALL NOT BE POURED UNTIL THE END BENT CAPS HAVE BEEN CONSTRUCTED.

TWO LAYERS OF 30 LB. ROOFING FELT SHALL BE PROVIDED BETWEEN WINGS AND ADJACENT COPING TO PREVENT BONDING.

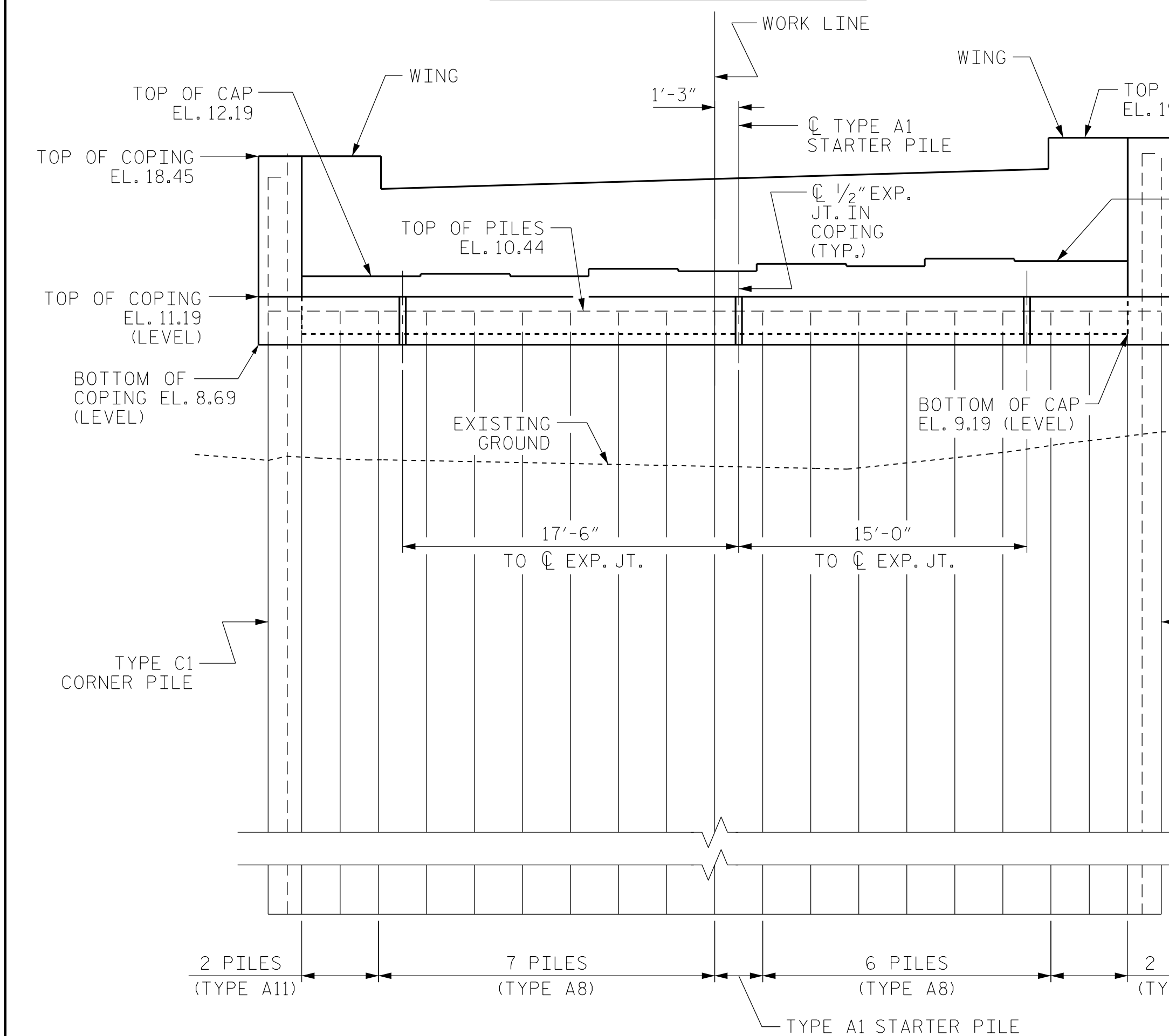
TWO LAYERS OF 30 LB. ROOFING FELT SHALL BE PROVIDED BETWEEN SIDES AND FRONT FACES OF END BENT CAPS AND ADJACENT COPING TO PREVENT BONDING.



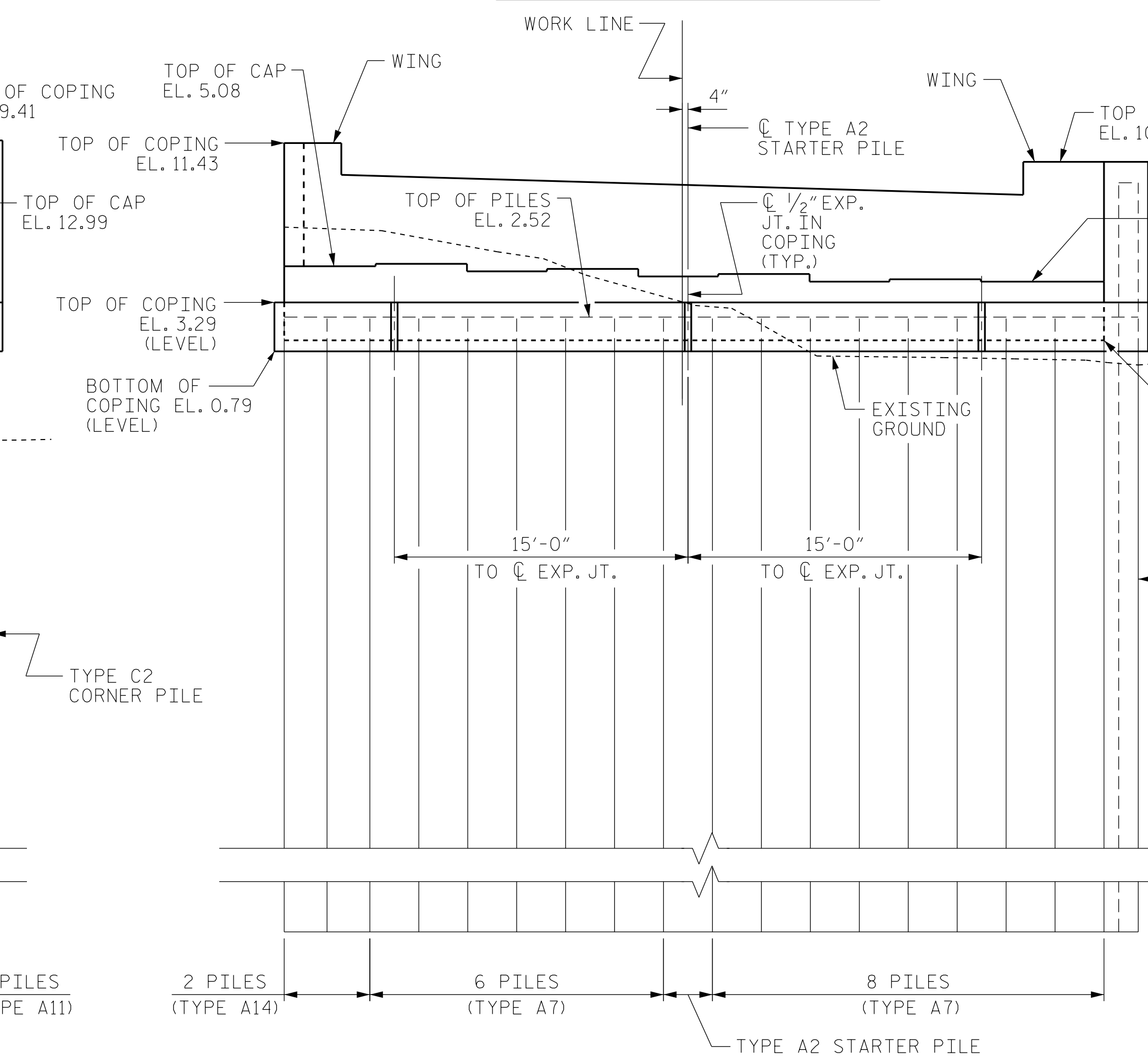
END BENT 1 PLAN



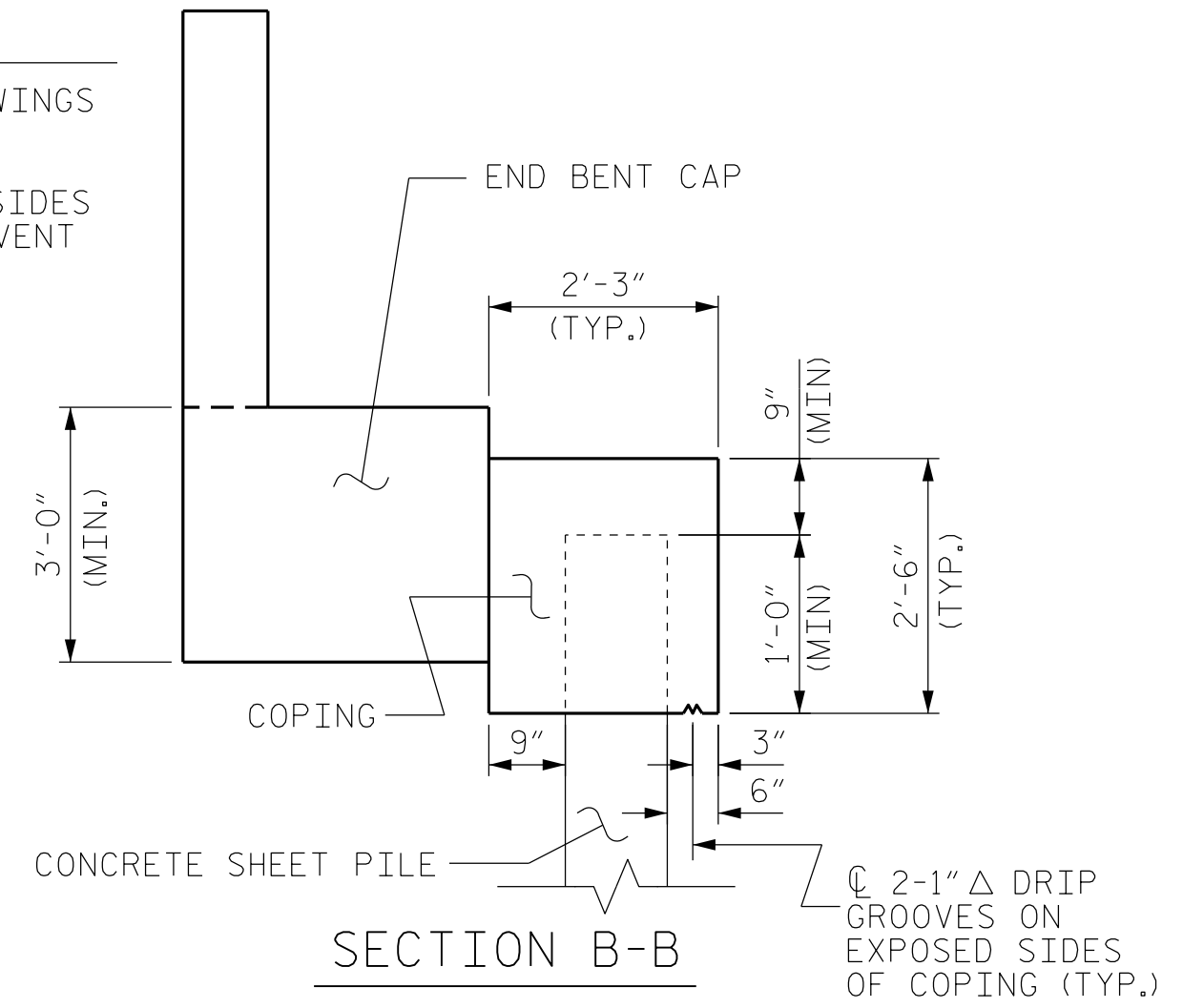
END BENT 2 PLAN



END BENT 1 ELEVATION
(LOOKING TOWARD FRONT FACE OF CAP)

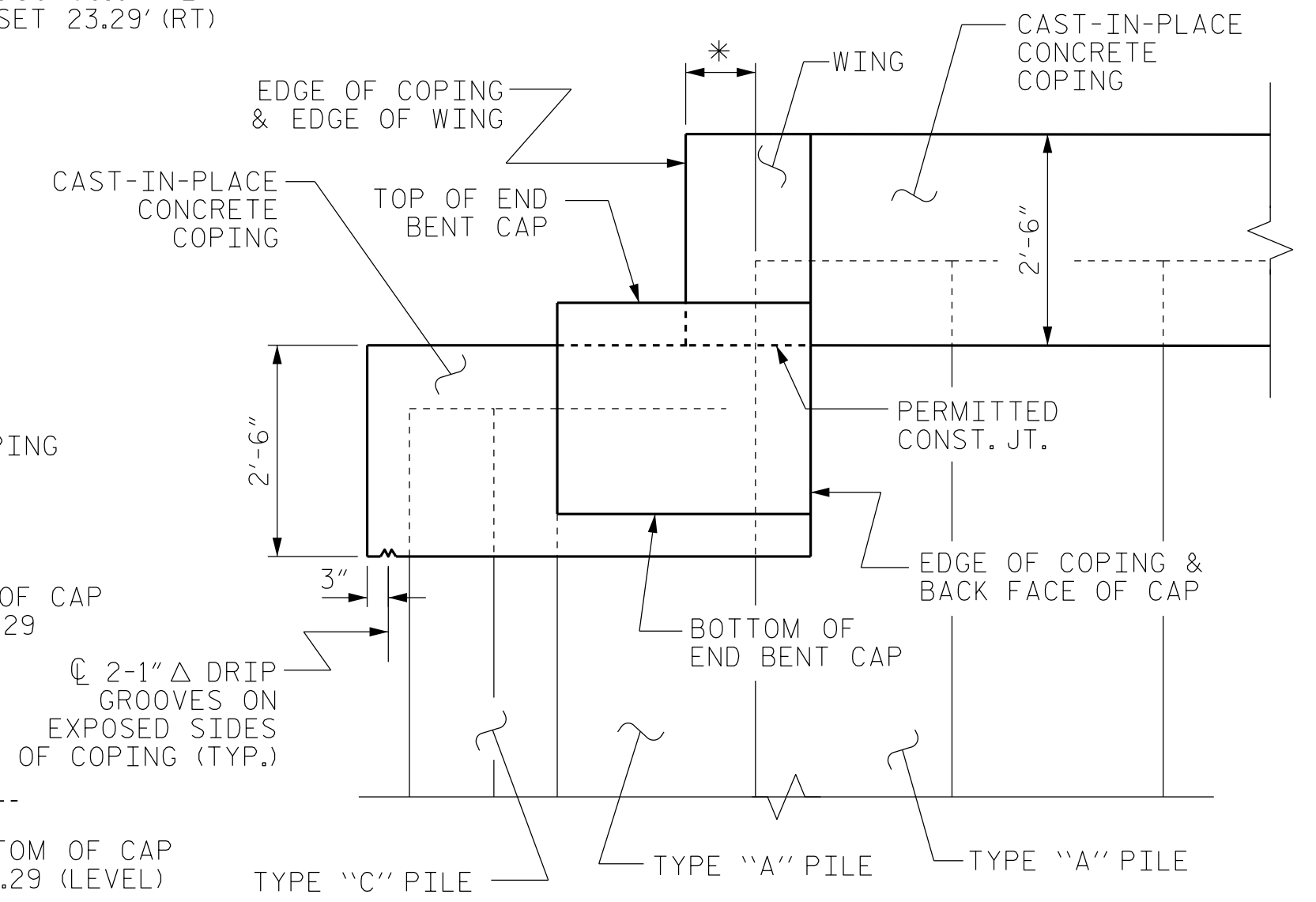


END BENT 2 ELEVATION
(LOOKING TOWARD FRONT FACE OF CAP)



SECTION B-B

* NOTE: THE EDGE OF CAST-IN-PLACE CONCRETE COPING SHALL MATCH THE EDGE OF WING AS SHOWN IN SECTION A-A.



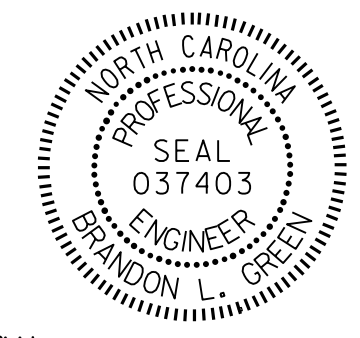
SECTION A-A

NOTE: SEE "CONCRETE SHEET PILE RETAINING WALL, SHEET PILE DETAILS", SHEETS 6 THRU 19 OF 19, FOR PILE TYPES.

PROJECT NO. B-4863
CARTERET COUNTY
 STATION: 34+75.00 -L-

SHEET 4 OF 16

STATE OF NORTH CAROLINA
 DEPARTMENT OF TRANSPORTATION
 RALEIGH
**CONCRETE SHEET PILE
 RETAINING WALL
 WALL AND COPING
 DETAILS AT END BENTS**



DRAWN BY : B. L. GREEN, P.E. DATE : 3/19
 CHECKED BY : D. A. CANTRELL, P.E. DATE : 6/19
 DESIGN ENGINEER OF RECORD : B. L. GREEN, P.E. DATE : 7/19

DocuSign by: Brandon Green 3/9/2020

DOCUMENT NOT CONSIDERED
 FINAL UNLESS ALL
 SIGNATURES COMPLETED

REVISIONS						SHEET NO.
NO.	BY:	DATE:	NO.	BY:	DATE:	W-04
1			3			TOTAL SHEETS
2			4			24