

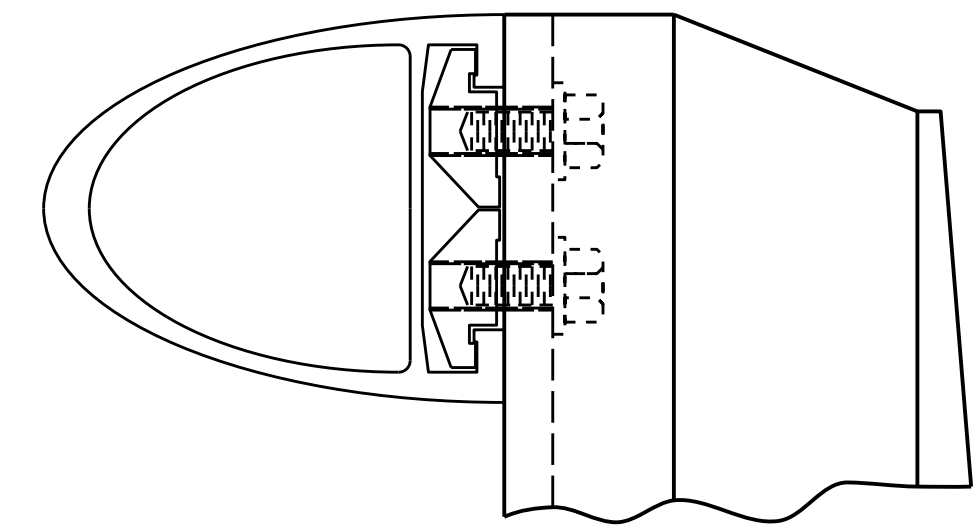
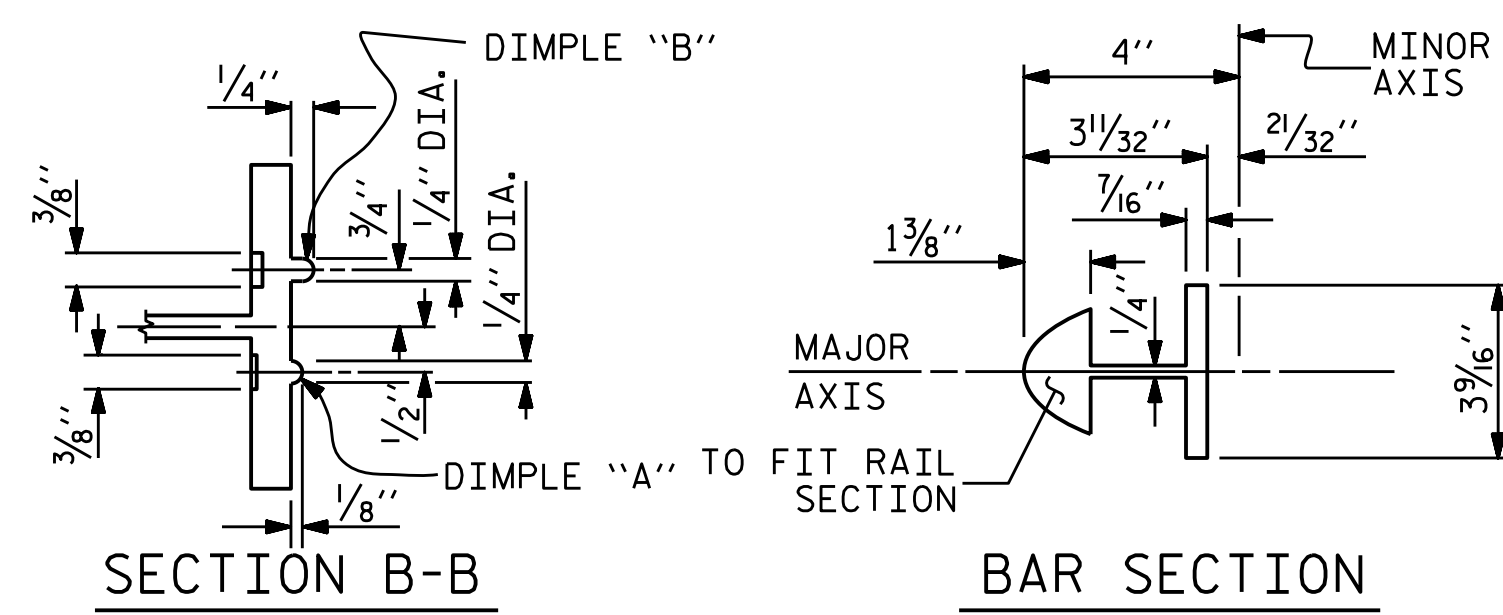
THE STRUCTURAL CONCRETE ANCHOR ASSEMBLY SHALL CONSIST OF THE FOLLOWING COMPONENTS:

EXISTING ANCHORING ASSEMBLY FERRULES HAVE A MINIMUM LENGTH OF THREADS OF 2 1/4" FOR 1" Ø BOLTS.

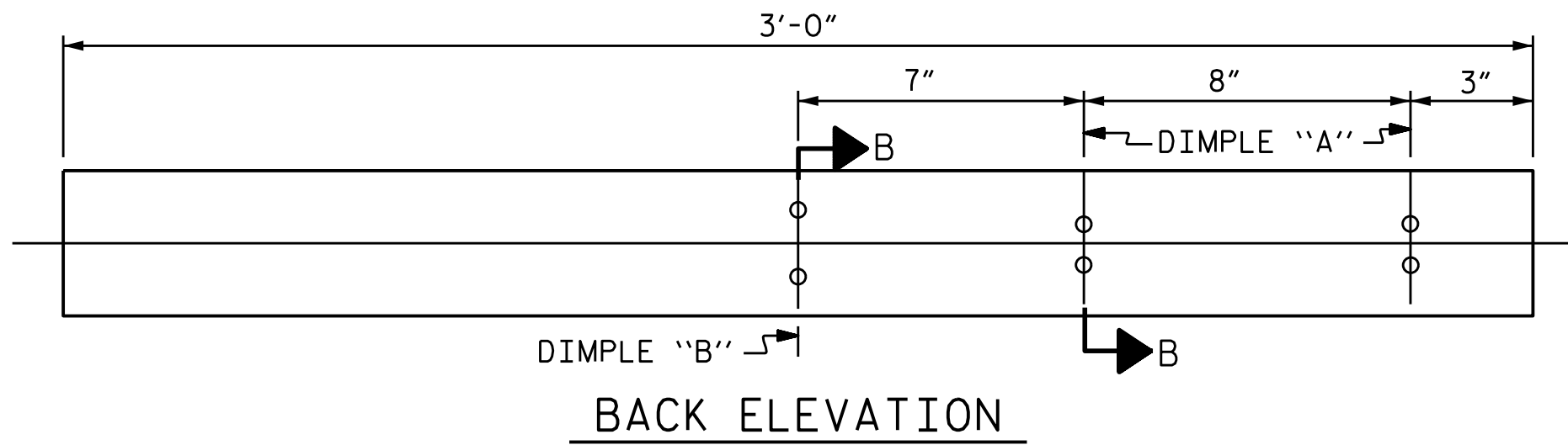
4 - 1" Ø X 2 3/4" BOLTS WITH WASHERS. BOLTS SHALL CONFORM TO THE REQUIREMENTS OF ASTM A307. BOLTS AND WASHERS SHALL BE GALVANIZED. AT THE CONTRACTOR'S OPTION, STAINLESS STEEL BOLTS AND WASHERS MAY BE USED AS AN ALTERNATE FOR THE 1" Ø X 2 3/4" GALVANIZED BOLTS AND WASHERS. THEY SHALL CONFORM TO OR EXCEED THE MECHANICAL REQUIREMENTS OF ASTM A307. THE USE OF THIS ALTERNATE SHALL BE APPROVED BY THE ENGINEER.

THE COST OF THE ANCHOR BOLTS AND WASHERS COMPLETE IN PLACE SHALL BE INCLUDED IN THE BID PRICE FOR LINEAR FEET OF METAL RAIL.

BOLTS TO BE TIGHTENED ONE-HALF TURN WITH A WRENCH FROM A FINGER-TIGHT POSITION.

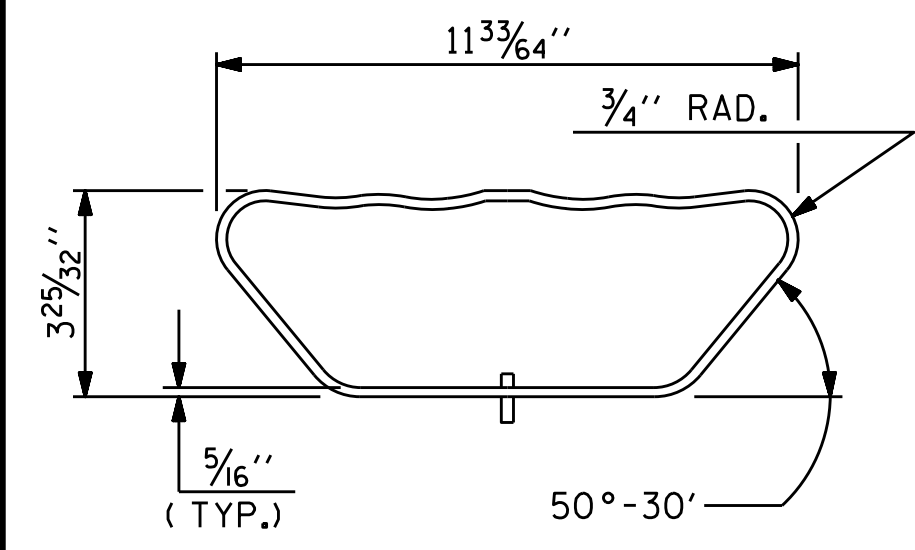


CLAMP ASSEMBLY
TOP RAIL SHOWN
(MIDDLE & BOTTOM RAIL ARE SIMILAR)

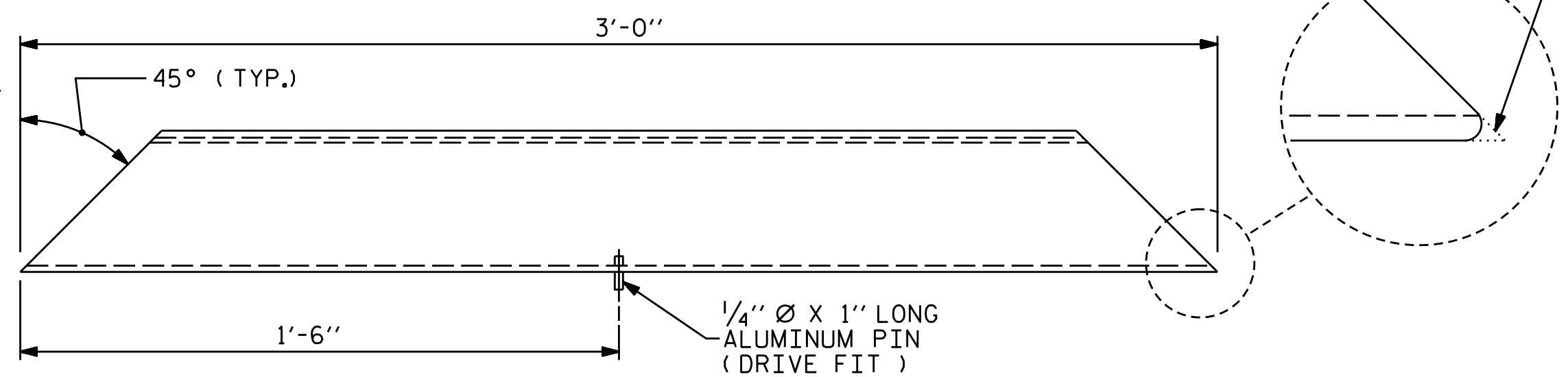


BACK ELEVATION

TOP & MIDDLE RAIL EXPANSION BAR

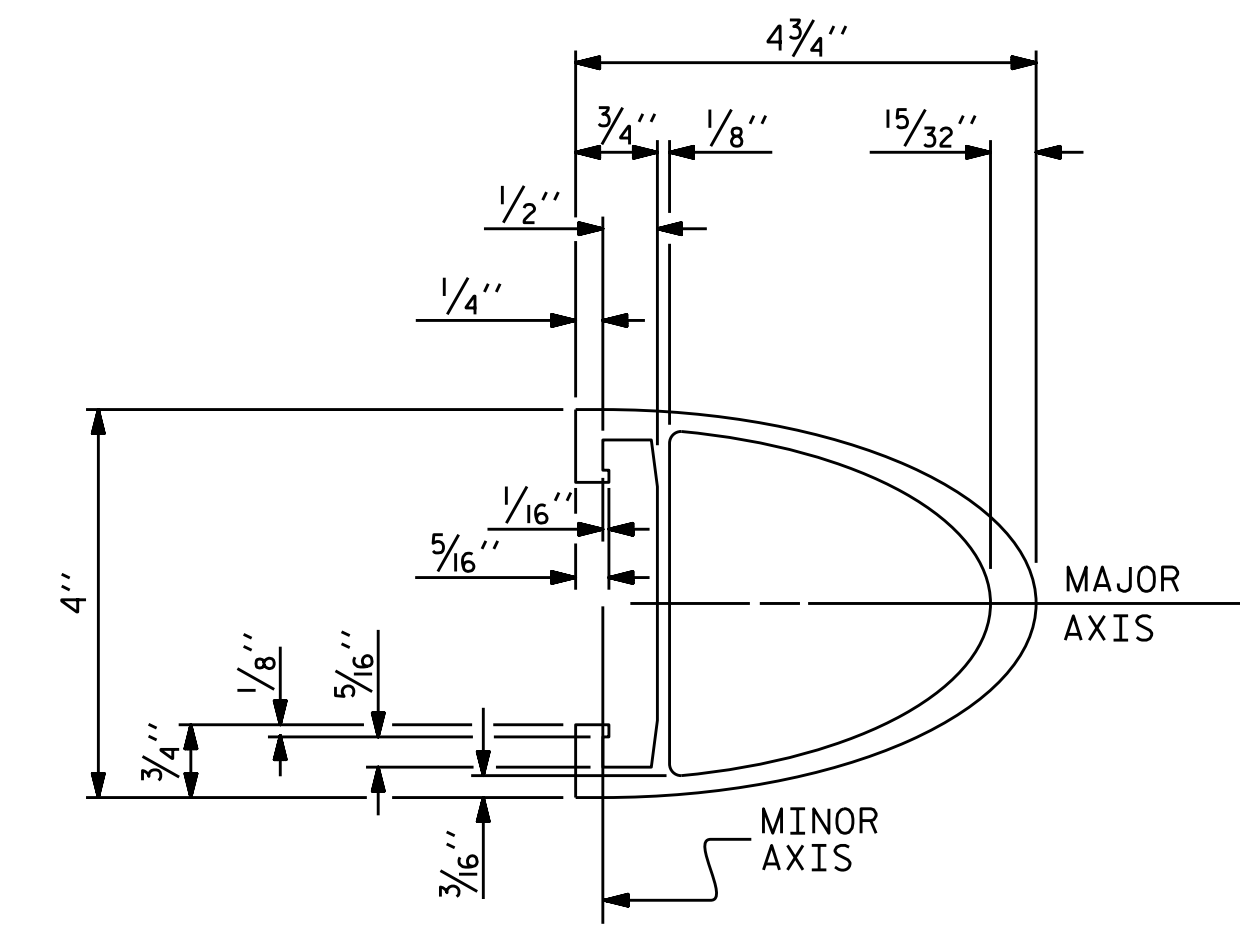


END VIEW

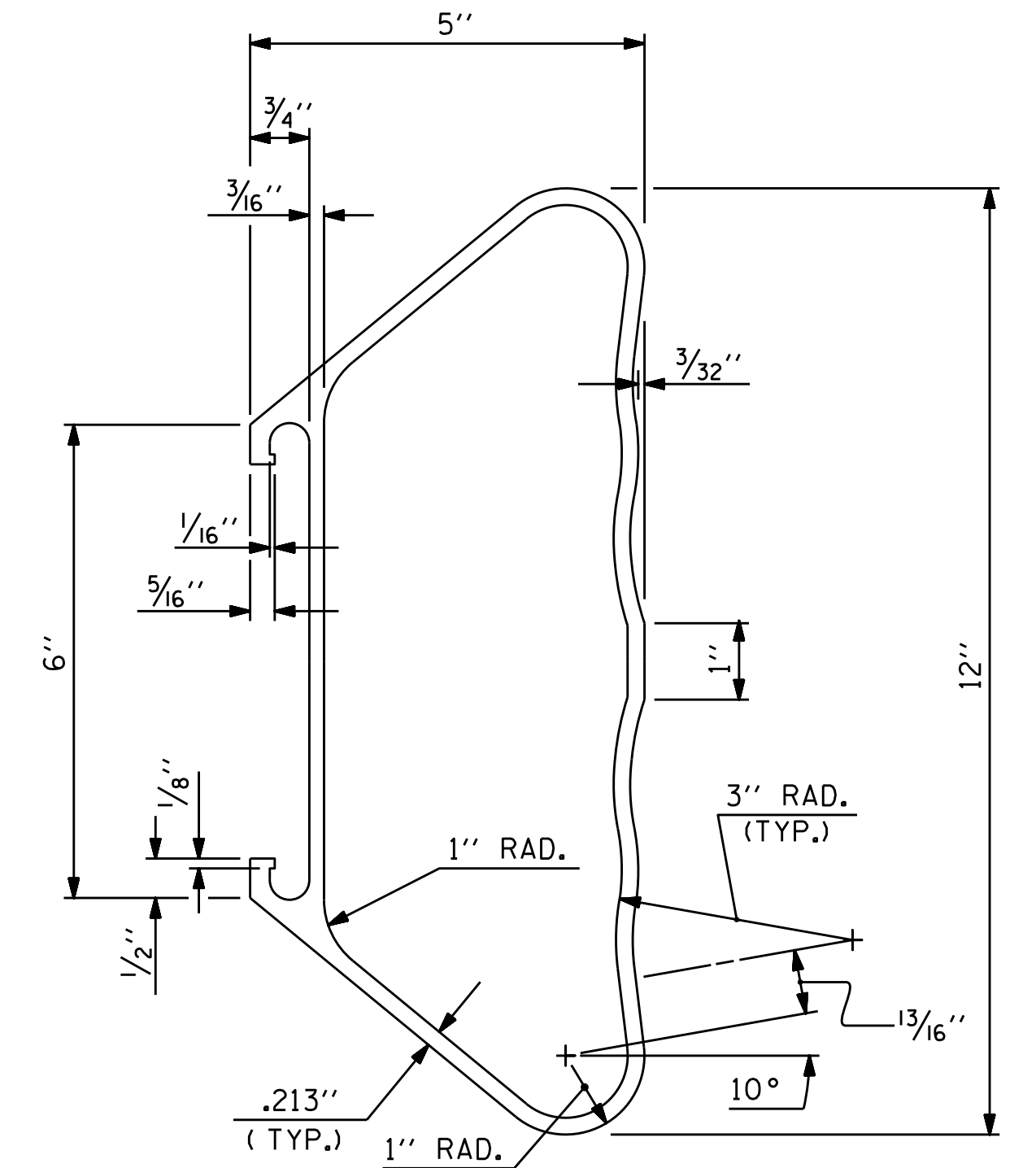


PLAN VIEW

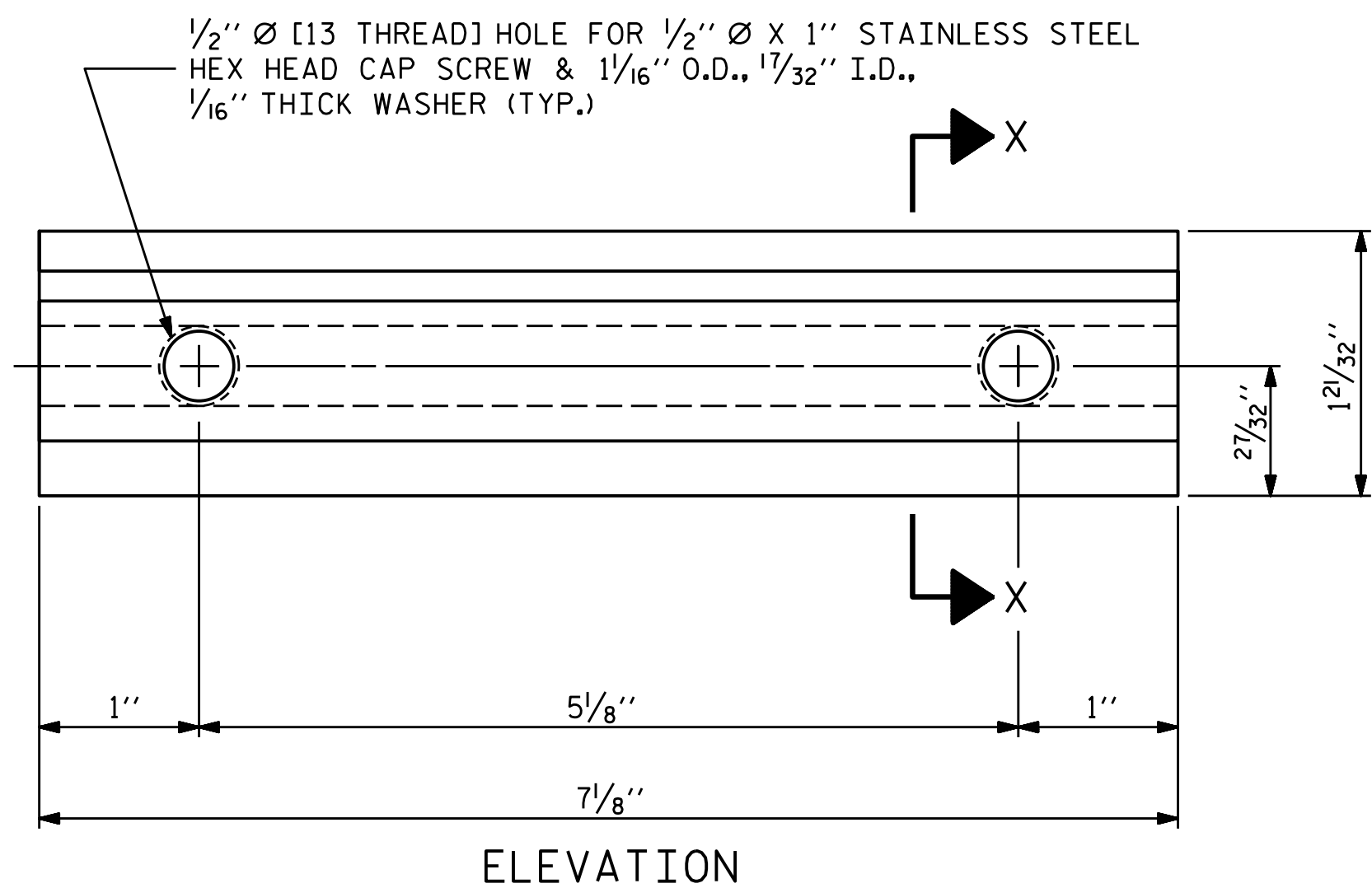
BOTTOM RAIL EXPANSION BAR



TOP & MIDDLE RAIL SECTIONS

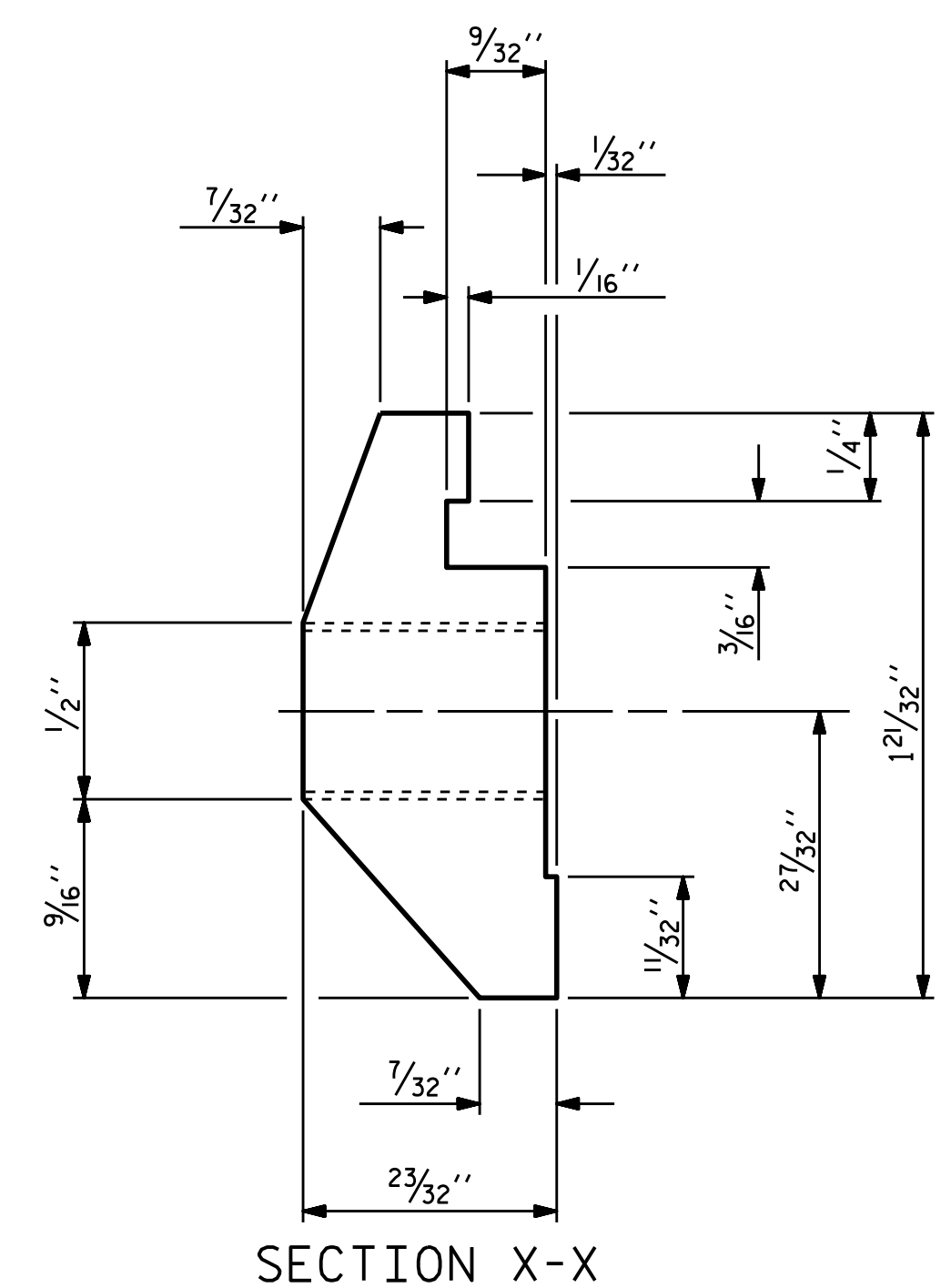


BOTTOM RAIL SECTION

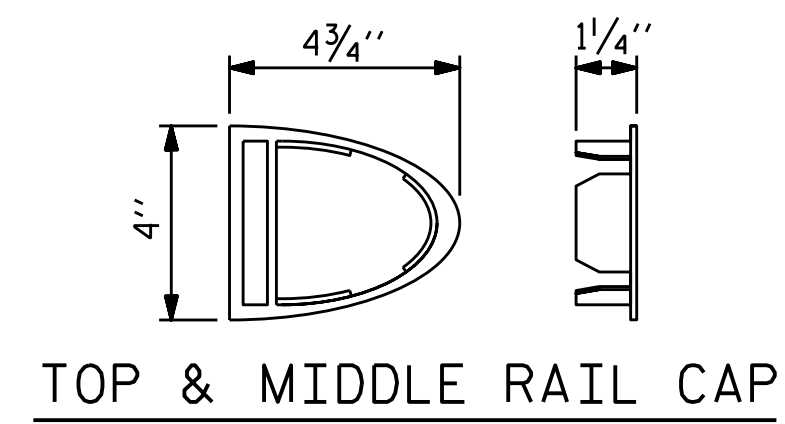


ELEVATION

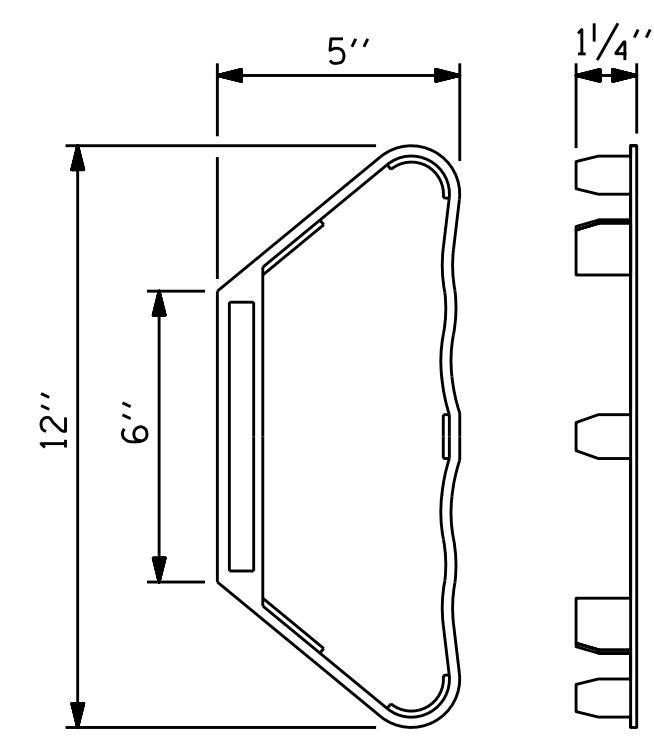
CLAMP BAR DETAIL
(8 REQUIRED PER POST)



SECTION X-X



TOP & MIDDLE RAIL CAP



BOTTOM RAIL CAP

PROJECT NO. B-4863
CARTERET COUNTY
BRIDGE NO.: 150096

SHEET 2 OF 3



STATE OF NORTH CAROLINA
DEPARTMENT OF TRANSPORTATION
RALEIGH
4 BAR METAL RAIL

3/10/2020

ASSEMBLED BY : R.L.PUTEK DATE : 02/2020
CHECKED BY : N.A.PIERCE DATE : 02/2020

REVISIONS						SHEET NO.
NO.	BY:	DATE:	NO.	BY:	DATE:	S2-08
1			3			TOTAL SHEETS
2			4			9

DOCUMENT NOT CONSIDERED
FINAL UNLESS ALL
SIGNATURES COMPLETED