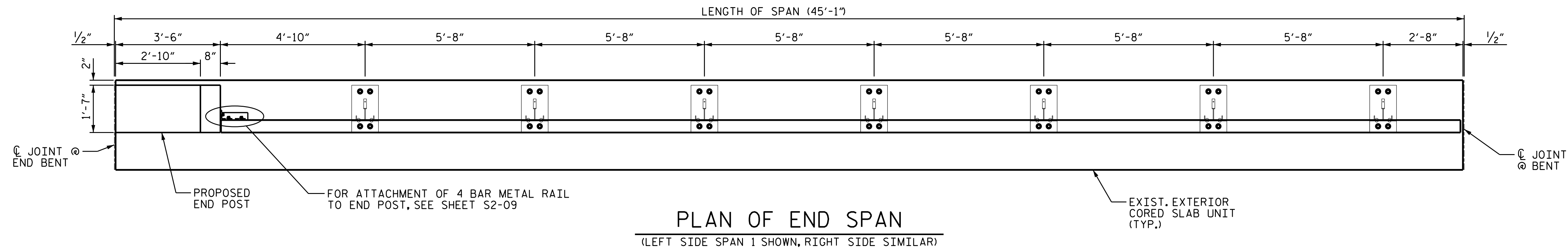


NOTES

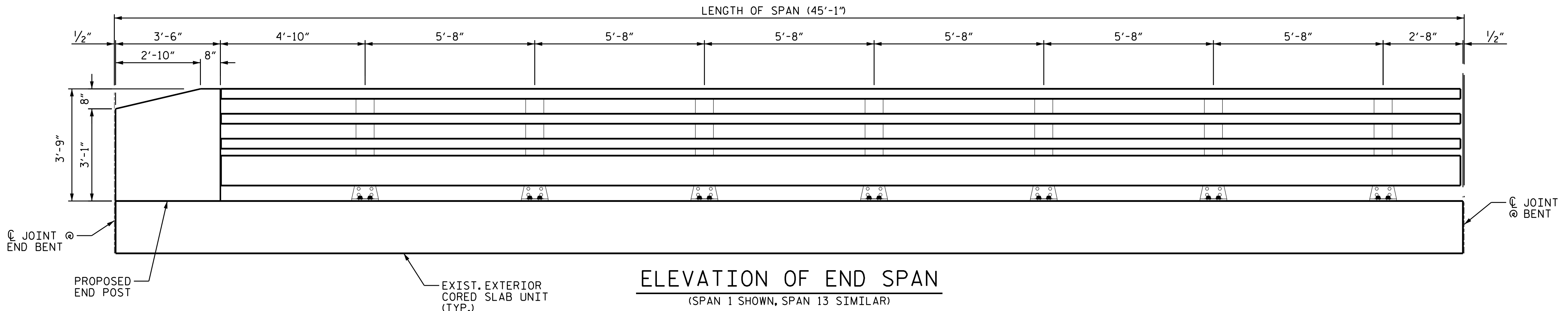
PROPOSED RAIL POST SPACING IS BASED OFF BEST INFORMATION AVAILABLE ON EXISTING GUARDRAIL POSTS. THE CONTRACTOR SHALL FIELD VERIFY THE INFORMATION SHOWN ON THE PLANS AND NOTIFY THE ENGINEER IF ACTUAL DIMENSIONS AND CONDITIONS DIFFER.

FOR INFORMATION ON 4 BAR METAL RAIL AND SPLICES, SEE SHEETS S2-07 THRU S2-09.

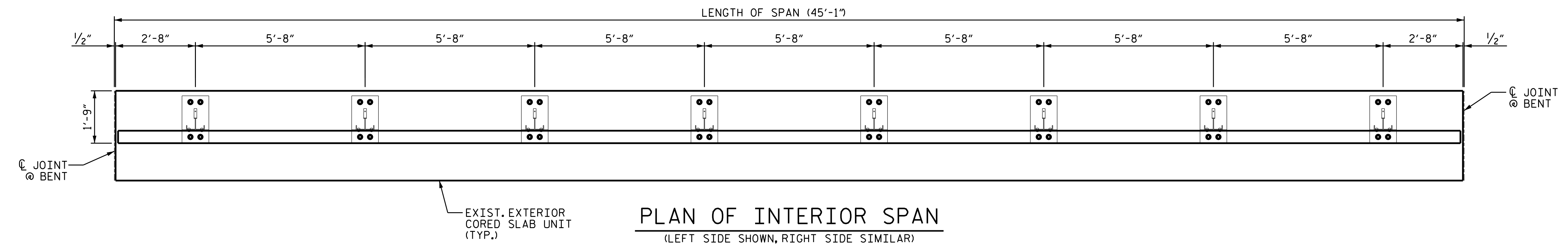
FOR PROPOSED END POSTS, SEE SHEET S2-06.



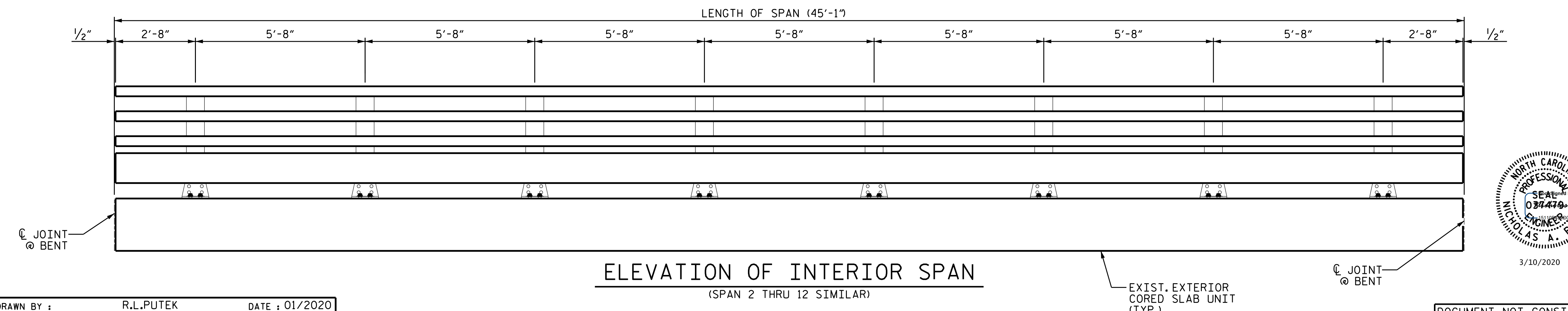
PLAN OF END SPAN
(LEFT SIDE SPAN 1 SHOWN, RIGHT SIDE SIMILAR)



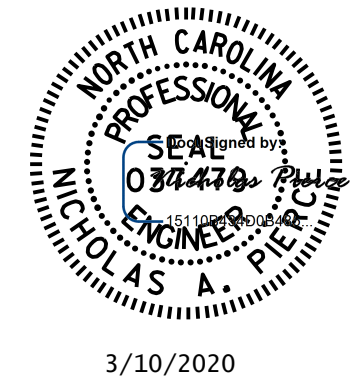
ELEVATION OF END SPAN
(SPAN 1 SHOWN, SPAN 13 SIMILAR)



PLAN OF INTERIOR SPAN
(LEFT SIDE SHOWN, RIGHT SIDE SIMILAR)



ELEVATION OF INTERIOR SPAN
(SPAN 2 THRU 12 SIMILAR)



PROJECT NO. B-4863
CARTERET COUNTY
 BRIDGE NO. 150096

STATE OF NORTH CAROLINA
 DEPARTMENT OF TRANSPORTATION
 RALEIGH
 RAIL POST SPACING

DRAWN BY : R.L.PUTEK DATE : 01/2020
 CHECKED BY : M.A.ALLEN DATE : 02/2020

REVISIONS						SHEET NO.
NO.	BY:	DATE:	NO.	BY:	DATE:	S2-05
1			3			TOTAL SHEETS
2			4			9

DOCUMENT NOT CONSIDERED FINAL UNLESS ALL SIGNATURES COMPLETED