

NOTES:

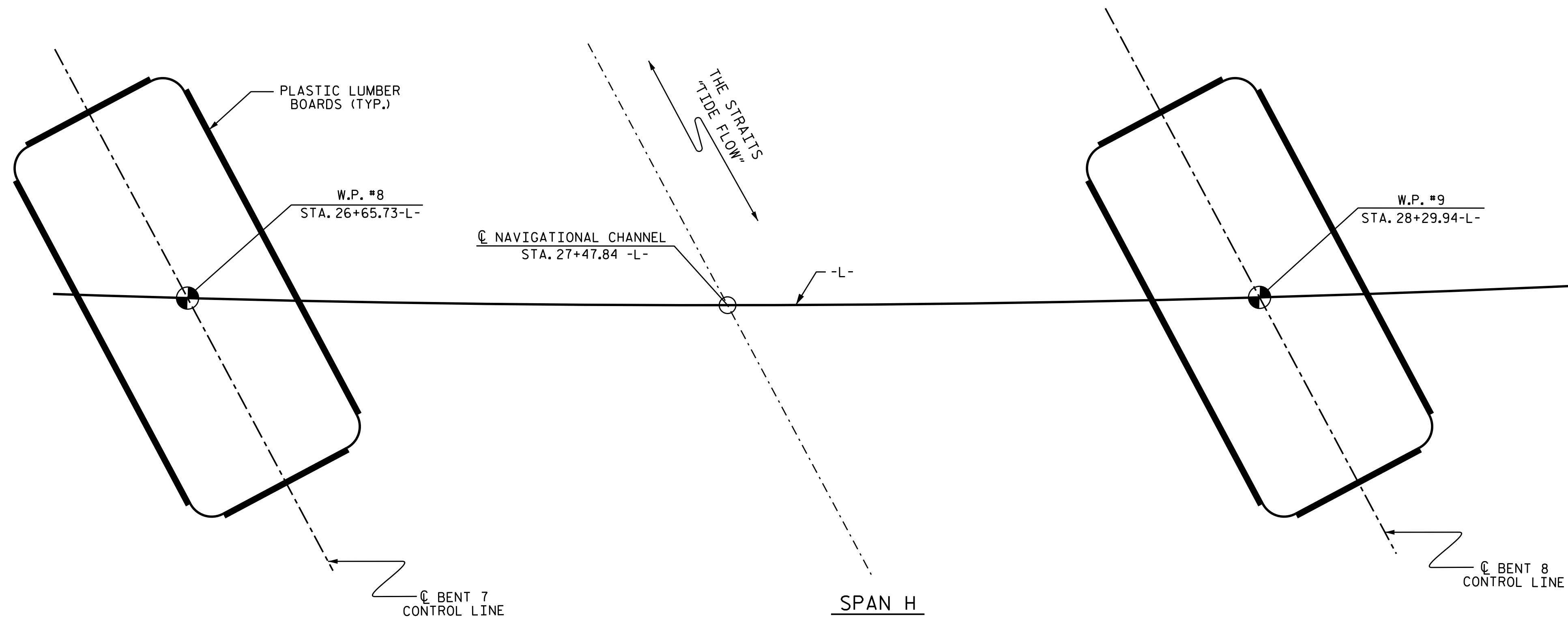
EACH PLASTIC LUMBER BOARD SHALL NOT EXCEED 16'-0" IN LENGTH AND SHALL CONTAIN AT LEAST THREE SETS OF FASTENERS SPACED AT A MAXIMUM OF 5'-0".

THE CONTRACTOR SHALL USE AN ADHESIVE BONDING SYSTEM IN THE BENT FOOTING. USE 3/4" Ø X 6 1/2" BOLT AND 2" O.D. WASHER. FIELD TESTING OF THE ADHESIVE BONDING SYSTEM IS NOT REQUIRED.

PLASTIC LUMBER DIMENSIONS AND QUANTITIES SHOWN ARE BASED ON NOMINAL LUMBER DIMENSIONS AND MAY VARY DEPENDING ON ACTUAL LUMBER DIMENSIONS.

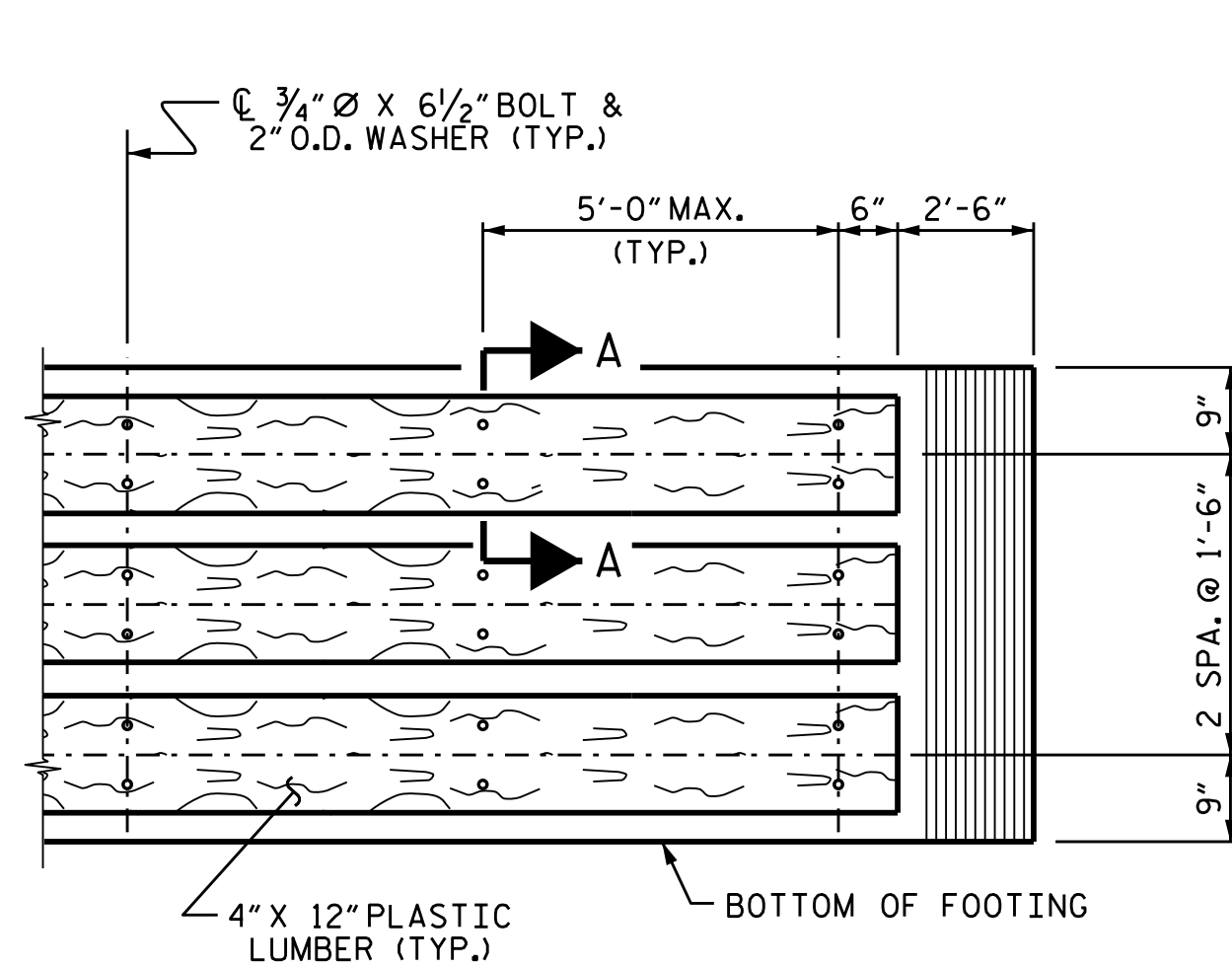
FOR PLASTIC LUMBER BOARD AT CHANNEL BENTS, SEE SPECIAL PROVISIONS.

THE BOLT WITH WASHER SHALL BE STAINLESS STEEL AND SHALL CONFORM TO OR EXCEED THE MECHANICAL REQUIREMENTS OF ASTM A307.

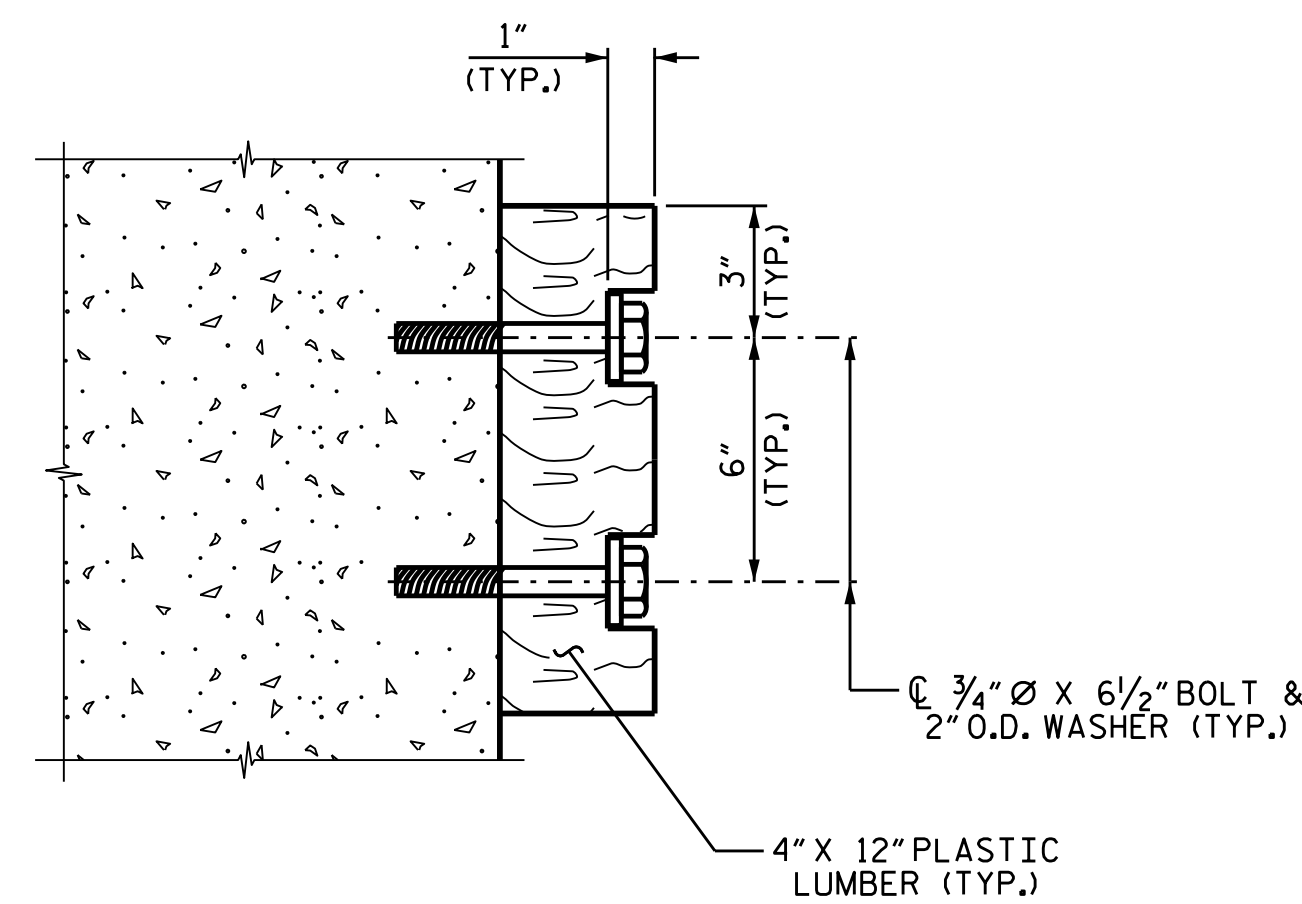


CHANNEL BENT FOOTING LAYOUT

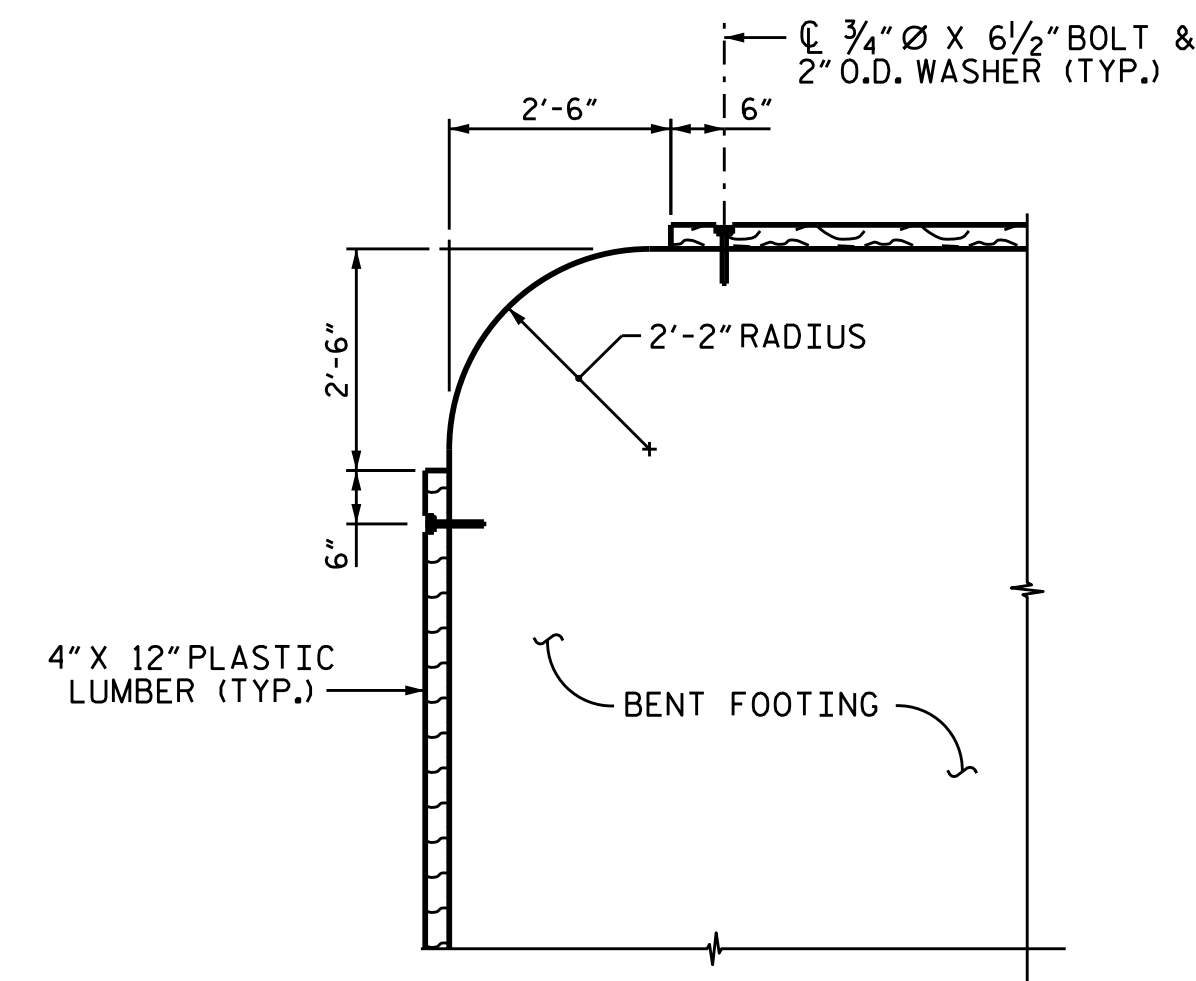
BENT COLUMNS AND PILES NOT SHOWN FOR CLARITY. SEE BENT DRAWINGS FOR SIZE OF FOOTINGS.



ELEVATION



SECTION A-A



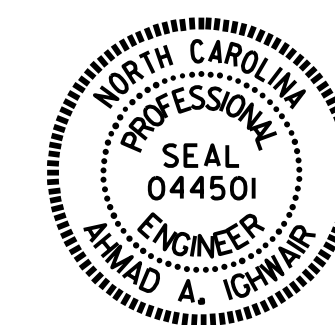
CORNER DETAIL

TYP. AT EACH CORNER

PROJECT NO. B-4863
CARTERET COUNTY
 STATION: 34+75.00-L-

STATE OF NORTH CAROLINA
 DEPARTMENT OF TRANSPORTATION
 RALEIGH

**PLASTIC LUMBER
 FENDER SYSTEM
 BENT 7 AND BENT 8**



DocuSigned by:
 Ahmad Ighwair
 48648044C555489
 3/9/2020

DRAWN BY : B. N. BARODAWALA DATE : 7-19
 CHECKED BY : A. A. IGHWAIR DATE : 8-19
 DESIGN ENGINEER OF RECORD: A. A. IGHWAIR DATE : 8-19

DOCUMENT NOT CONSIDERED
 FINAL UNLESS ALL
 SIGNATURES COMPLETED

REVISIONS						SHEET NO.
NO.	BY:	DATE:	NO.	BY:	DATE:	TOTAL SHEETS
1			3			S1-192
2			4			194