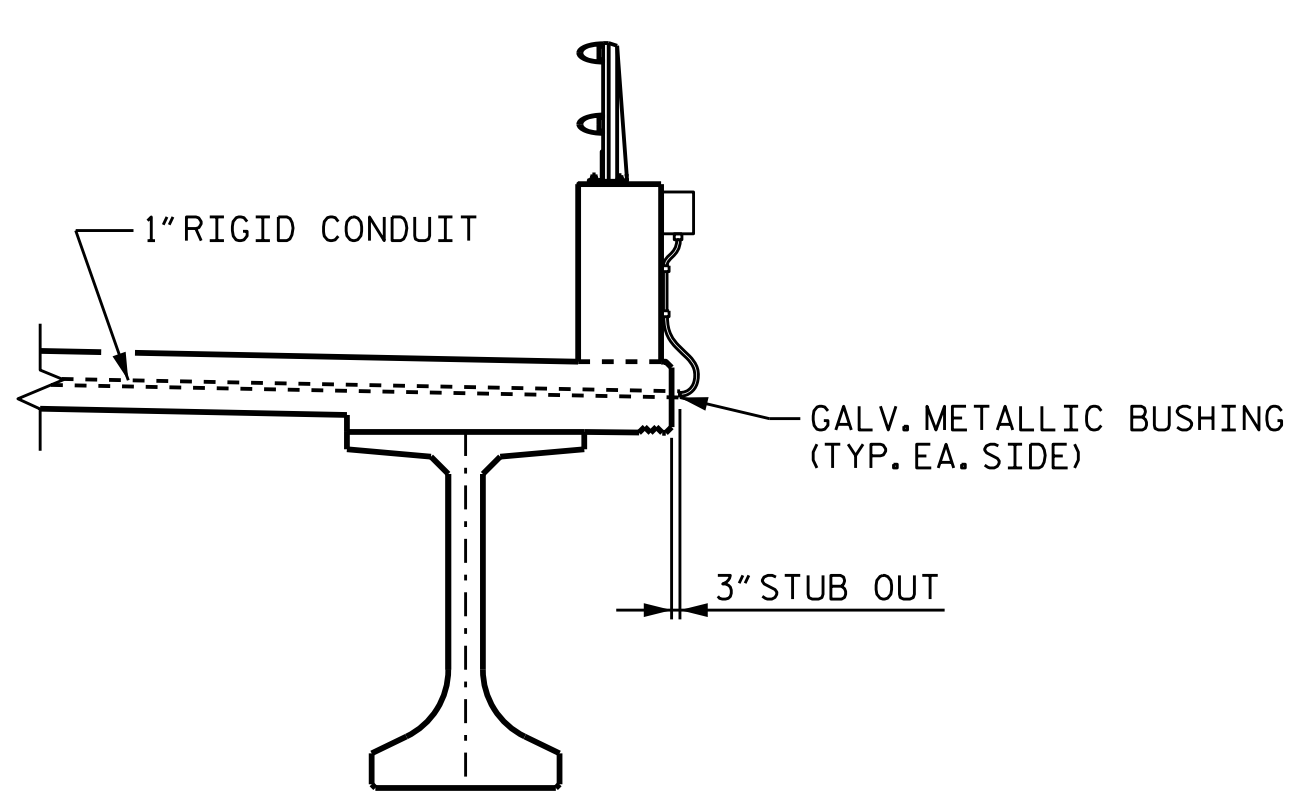


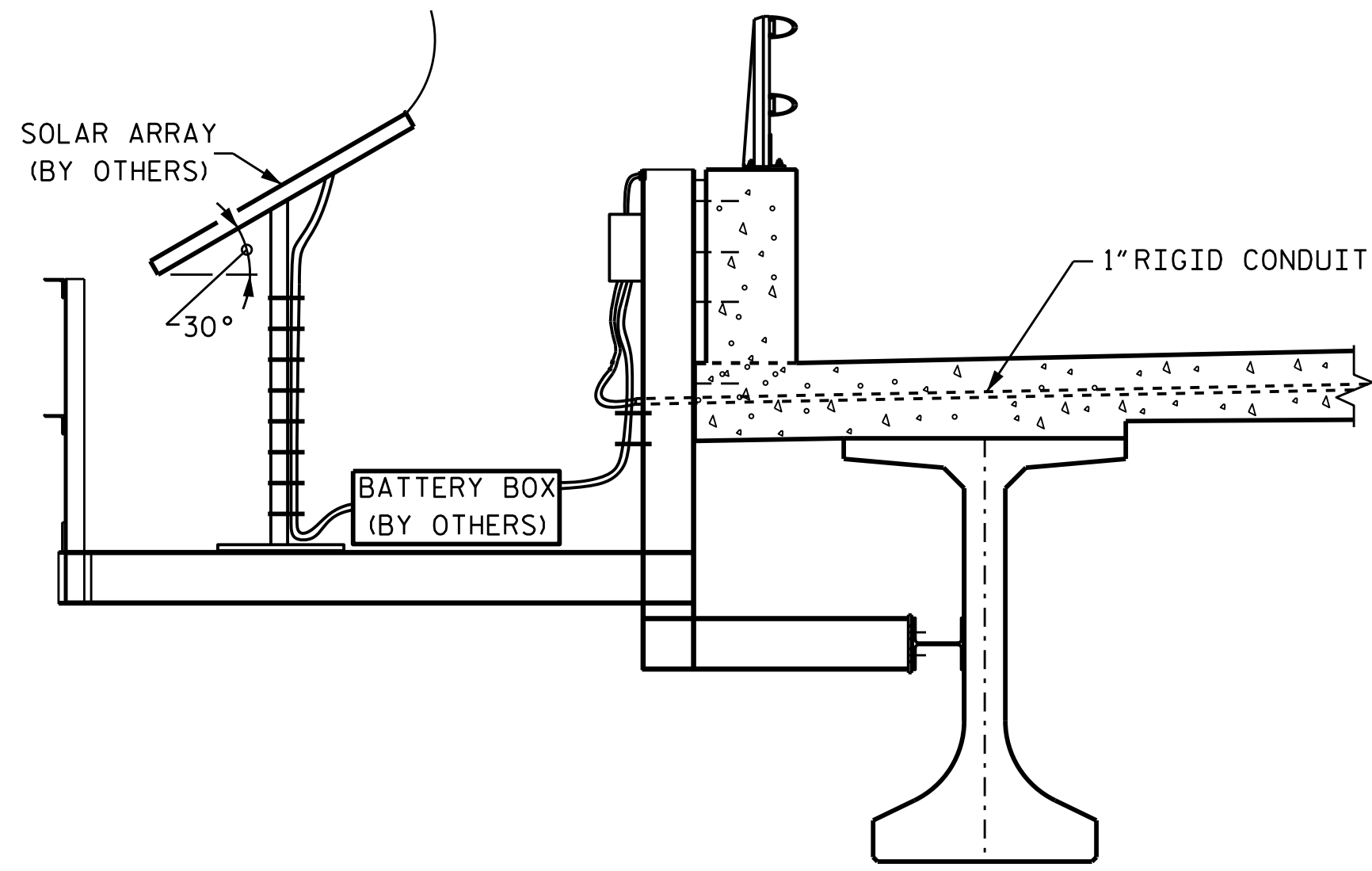
NOTES:
 FOR NAVIGATIONAL LIGHTING SYSTEM, SEE SPECIAL PROVISIONS.
 SEE "SOLAR ARRAY SUPPORT PLATFORM" SHEET FOR ADDITIONAL DETAILS.
 1" RIGID CONDUIT TO BE PLACED DURING SPAN "H" CONSTRUCTION.
 SEE "GENERAL DRAWING" SHEET 2 OF 8 FOR NAVIGATIONAL CHANNEL AND NAVIGATIONAL CLEARANCES.

PLAN

- ⊙ 360° GREEN NAVIGATIONAL LIGHT - CHANNEL CENTERLINE
- 180° RED NAVIGATIONAL LIGHT - CHANNEL MARGIN

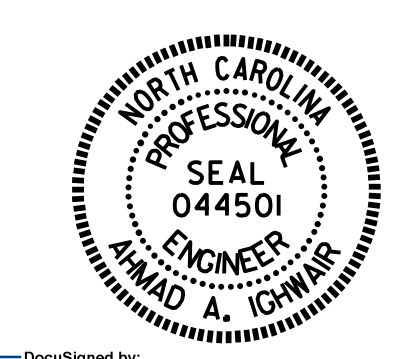


SECTION A-A



SECTION B-B

PROJECT NO. B-4863
CARTERET COUNTY
 STATION: 34+75.00-L-



STATE OF NORTH CAROLINA
 DEPARTMENT OF TRANSPORTATION
 RALEIGH
 NAVIGATIONAL LIGHTING
 AND
 CONDUIT SYSTEM

DRAWN BY : B. N. BARODAWALA DATE : 07-19
 CHECKED BY : A. A. IGHWAIR P.E. DATE : 08-19
 DESIGN ENGINEER OF RECORD: A. A. IGHWAIR DATE : 08-19

DOCUMENT NOT CONSIDERED
 FINAL UNLESS ALL
 SIGNATURES COMPLETED

REVISIONS						SHEET NO.
NO.	BY:	DATE:	NO.	BY:	DATE:	TOTAL SHEETS
1			3			191
2			4			194