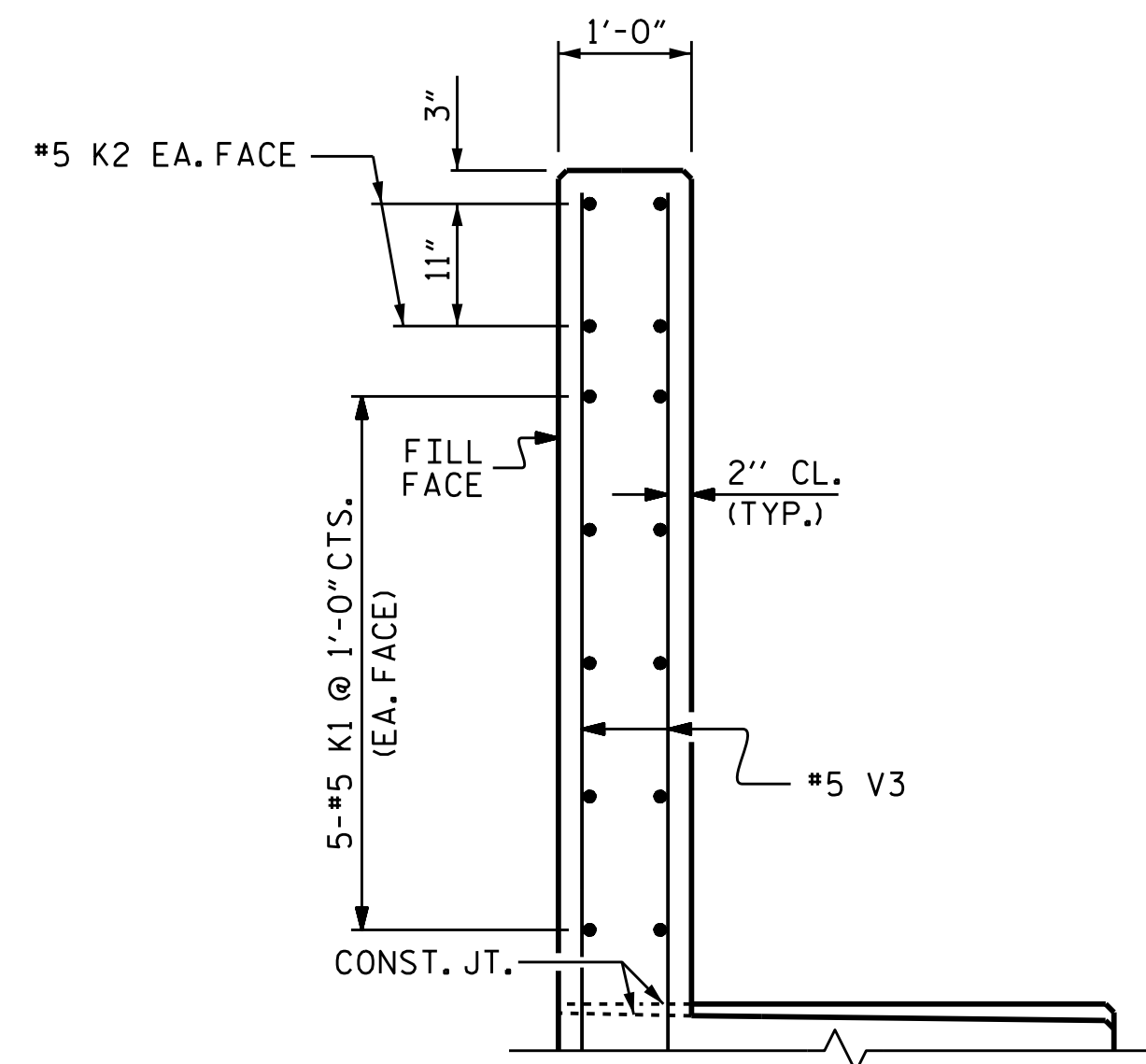


BAGGED STONE AND PIPE SHALL BE PLACED IMMEDIATELY AFTER COMPLETION OF END BENT EXCAVATION. PIPE MAY BE EITHER CONCRETE, CORRUGATED STEEL, CORRUGATED ALUMINUM ALLOY, OR CORRUGATED PLASTIC. PERFORATED PIPE WILL NOT BE ALLOWED.

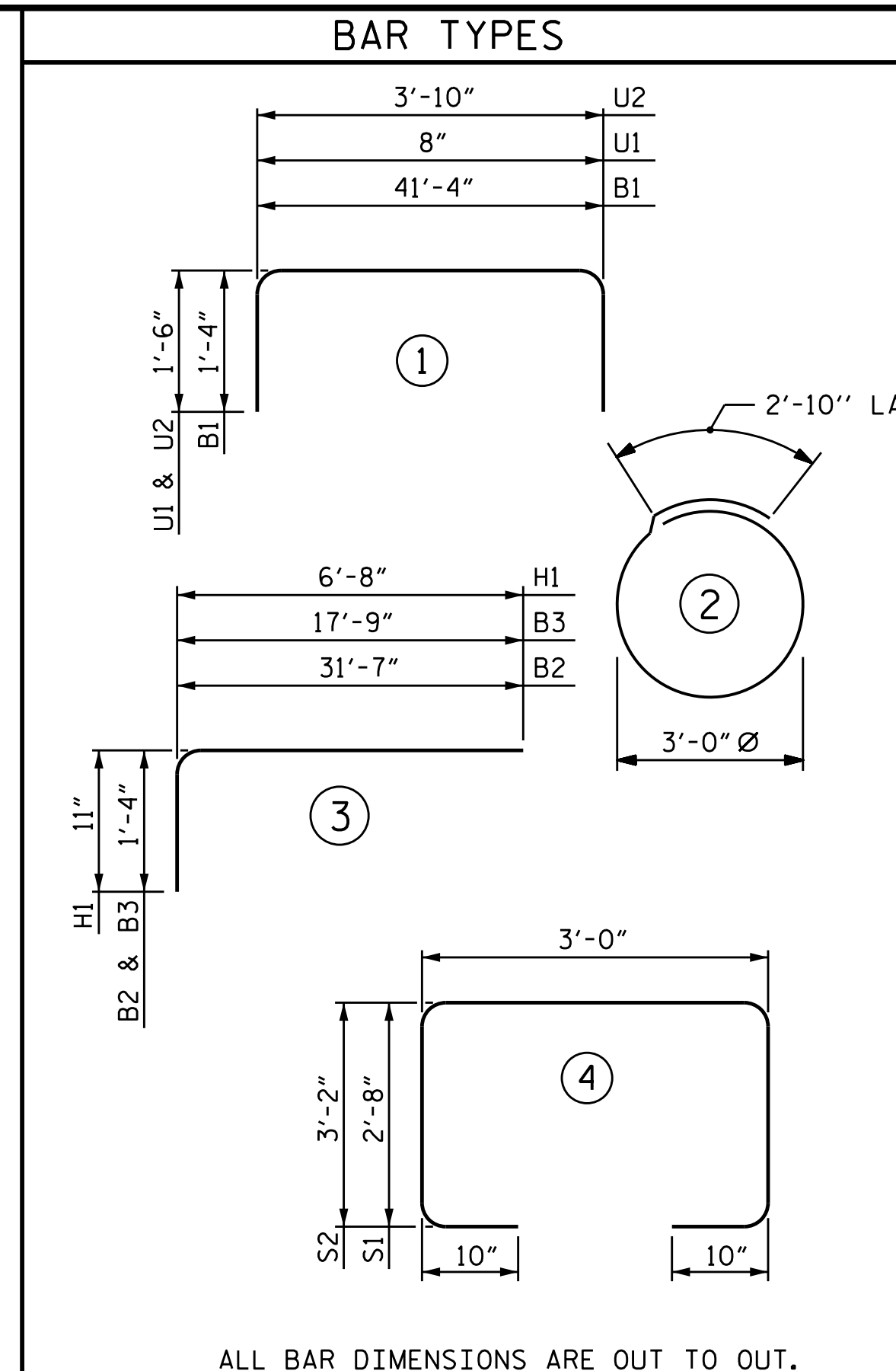
BAGGED STONE SHALL REMAIN IN PLACE UNTIL THE ENGINEER DIRECTS THAT IT BE REMOVED. THE CONTRACTOR SHALL REMOVE AND DISPOSE OF SILT ACCUMULATIONS AT BAGGED STONE WHEN SO DIRECTED BY THE ENGINEER. BAGS SHALL BE REMOVED AND REPLACED WHENEVER THE ENGINEER DETERMINES THAT THEY HAVE DETERIORATED AND LOST THEIR EFFECTIVENESS.

NO SEPARATE PAYMENT WILL BE MADE FOR THIS WORK AND THE ENTIRE COST OF THIS WORK SHALL BE INCLUDED IN THE UNIT CONTRACT PRICE BID FOR THE SEVERAL PAY ITEMS.

### TEMPORARY DRAINAGE AT END BENT

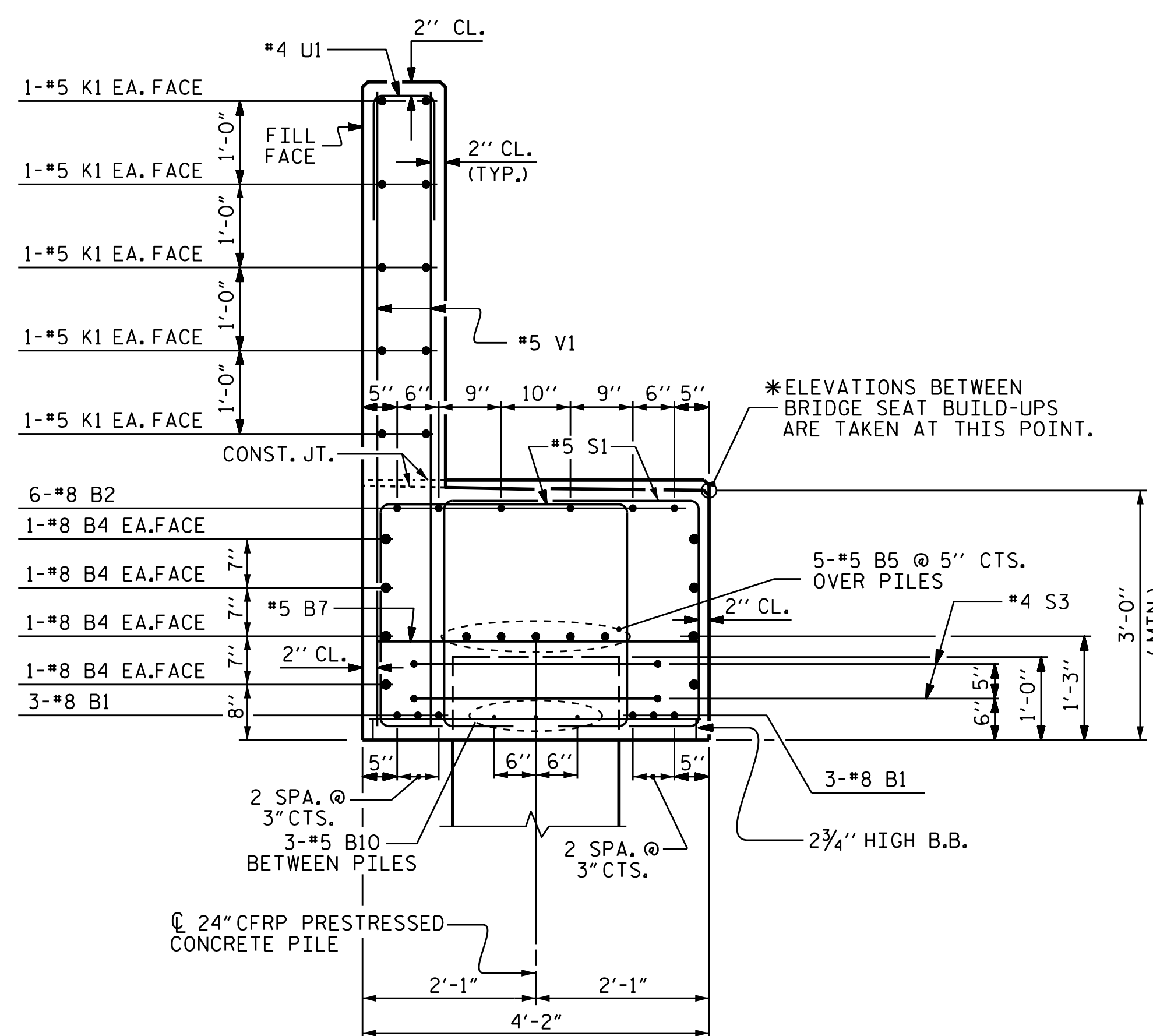


PARTIAL SECTION C-C

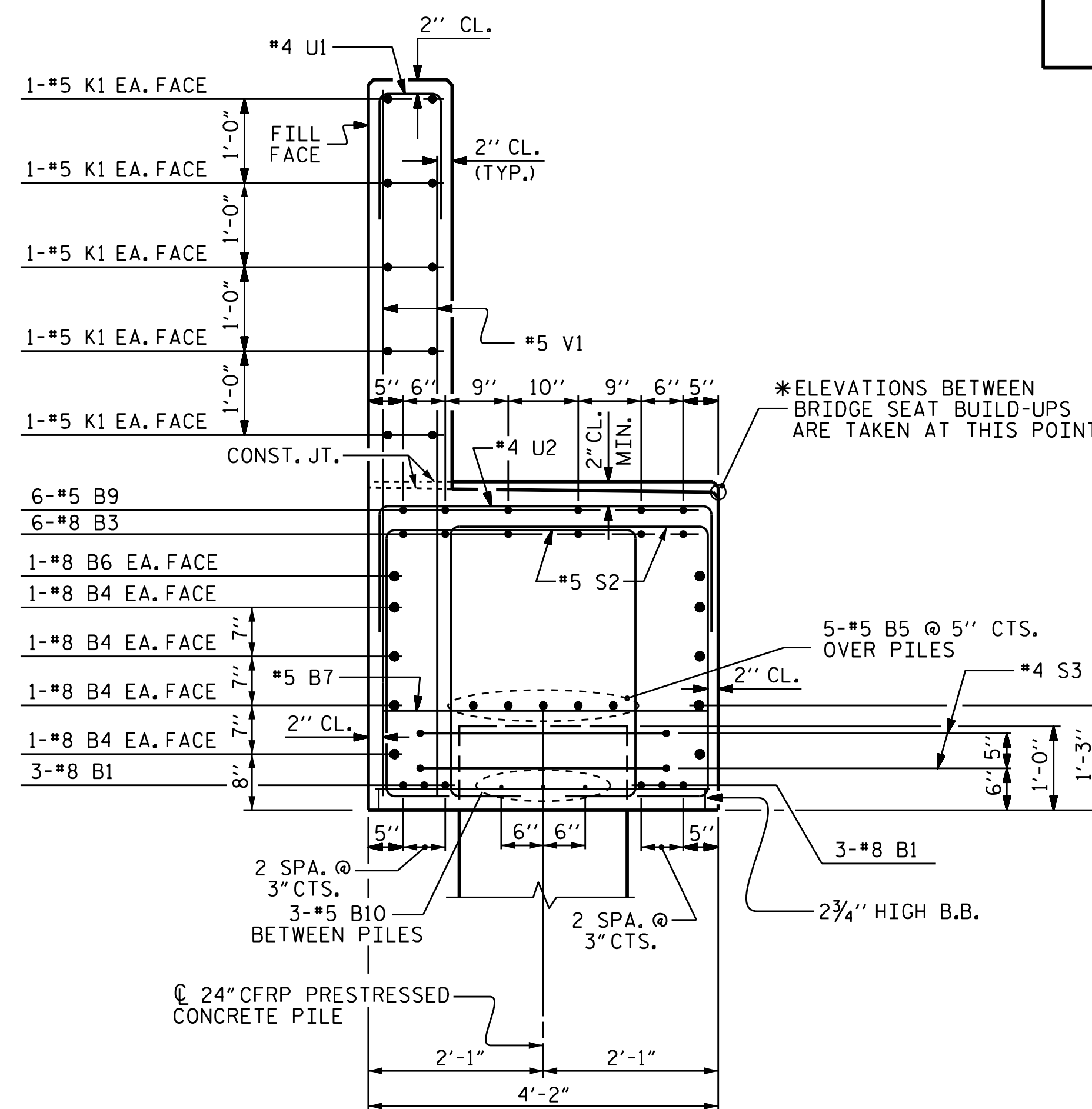


BILL OF MATERIAL					
END BENT #2					
BAR	NO.	SIZE	TYPE	LENGTH	TOTAL LENGTH
B1	6	#8	1	44'-0"	264'-0"
B2	6	#8	3	32'-11"	197'-6"
B3	6	#8	3	19'-1"	114'-6"
B4	8	#8	STR	41'-6"	332'-0"
B5	5	#5	STR	41'-6"	207'-6"
B6	2	#8	STR	17'-9"	35'-6"
B7	12	#5	STR	3'-10"	46'-0"
B8	6	#5	STR	8'-9"	52'-6"
B9	6	#5	STR	9'-0"	54'-0"
B10	15	#5	STR	5'-4"	80'-0"
E1	32	#5	STR	3'-8"	117'-4"
H1	22	#5	3	7'-7"	166'-10"
K1	10	#5	STR	41'-6"	415'-0"
K2	4	#5	STR	4'-5"	17'-8"
K3	4	#5	STR	3'-3"	13'-0"
S1	68	#5	4	10'-0"	680'-0"
S2	50	#5	4	11'-0"	550'-0"
S3	12	#4	2	12'-3"	147'-0"
U1	34	#4	1	3'-8"	124'-8"
U2	12	#4	1	6'-10"	82'-0"
V1	68	#5	STR	7'-1"	481'-8"
V2	22	#5	STR	9'-9"	214'-6"
V3	12	#5	STR	8'-10"	106'-0"
TOTAL LIN. FT. # 4 BARS					353.7
TOTAL LIN. FT. # 5 BARS					3202.0
TOTAL LIN. FT. # 8 BARS					943.5

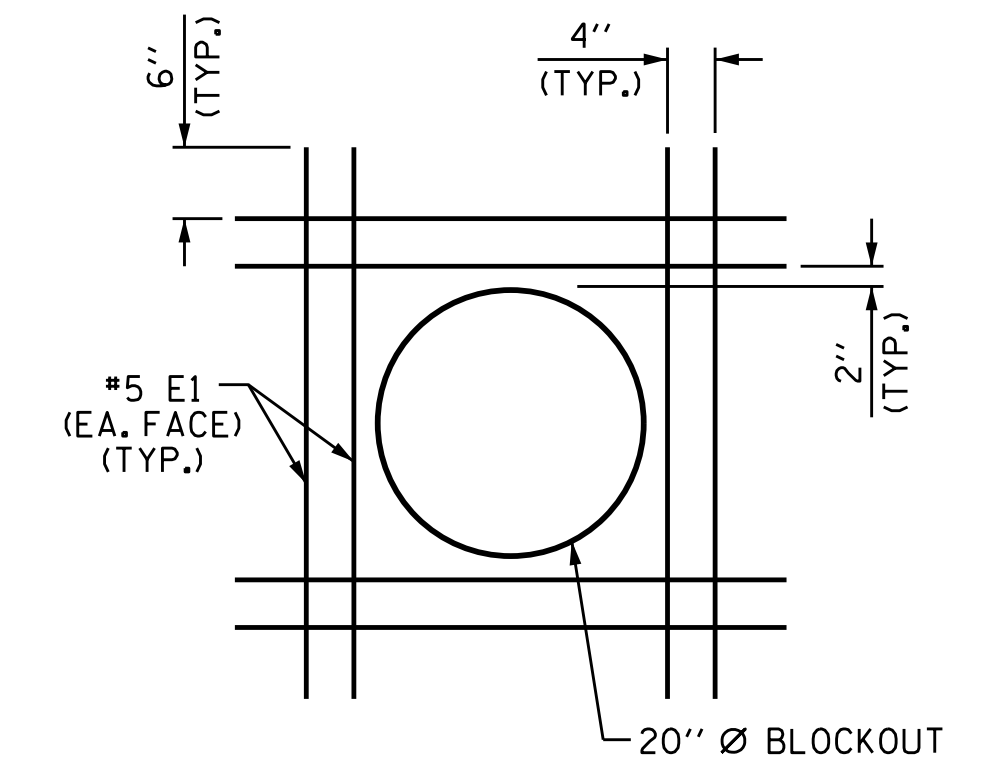
GLASS FIBER REINFORCED POLYMER BARS		TOTAL 4499.17 LIN. FT.
CLASS AA CONCRETE BREAKDOWN		
POUR #1	CAP & LOWER PART OF WINGS	21.9 C.Y.
POUR #2	BACKWALL & UPPER PART OF WINGS	8.9 C.Y.
TOTAL CLASS AA CONCRETE		30.8 C.Y.



SECTION A-A



SECTION B-B



DETAIL OF REINFORCING AROUND 16" Ø PIPE

PROJECT NO. B-4863  
CARTERET COUNTY  
 STATION: 34+75.00 -L-  
 SHEET 3 OF 3



STATE OF NORTH CAROLINA  
 DEPARTMENT OF TRANSPORTATION  
 RALEIGH  
 SUBSTRUCTURE  
 END BENT #2

DRAWN BY : I.L. AVERETTE DATE : 12/2018  
 CHECKED BY : A.K. PATEL DATE : 11/2019  
 DESIGN ENGINEER OF RECORD: A.K. PATEL DATE : 11/2019

DOCUMENT NOT CONSIDERED FINAL UNLESS ALL SIGNATURES COMPLETED

REVISIONS						SHEET NO.
NO.	BY:	DATE:	NO.	BY:	DATE:	TOTAL SHEETS
1			3			194
2			4			