

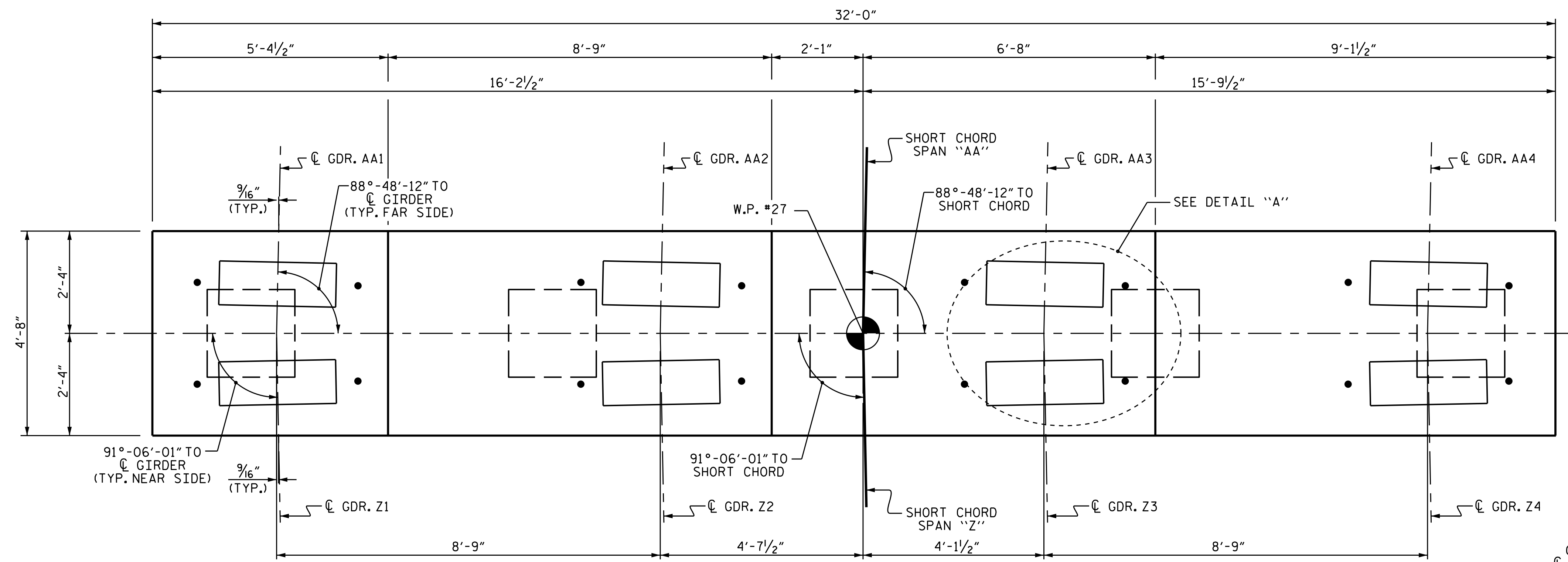
**NOTES**

STIRRUPS AND UI BARS IN CAP MAY BE SHIFTED AS NECESSARY TO CLEAR ANCHOR BOLTS.

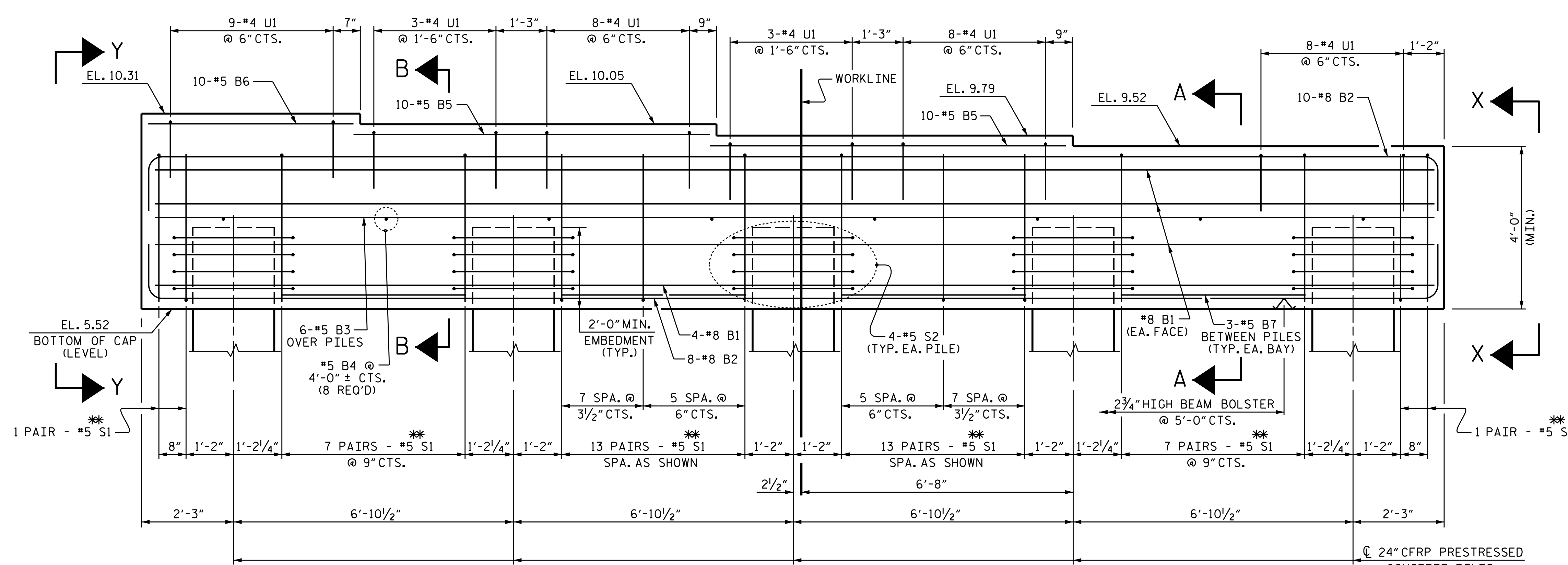
CONCRETE DISPLACED BY CONCRETE PILES HAS BEEN DEDUCTED FROM THE CAP CONCRETE QUANTITY.

THE TOP SURFACE AREAS OF THE BENT CAP SHALL BE CURED IN ACCORDANCE WITH THE STANDARD SPECIFICATIONS EXCEPT THE MEMBRANE CURING COMPOUND METHOD SHALL NOT BE USED.

ALL REINFORCING IN THE CAP IS TO BE GLASS FIBER REINFORCED POLYMER (GFRP) BARS. FOR GLASS FIBER REINFORCED POLYMER BARS, SEE SPECIAL PROVISIONS.



**PLAN**



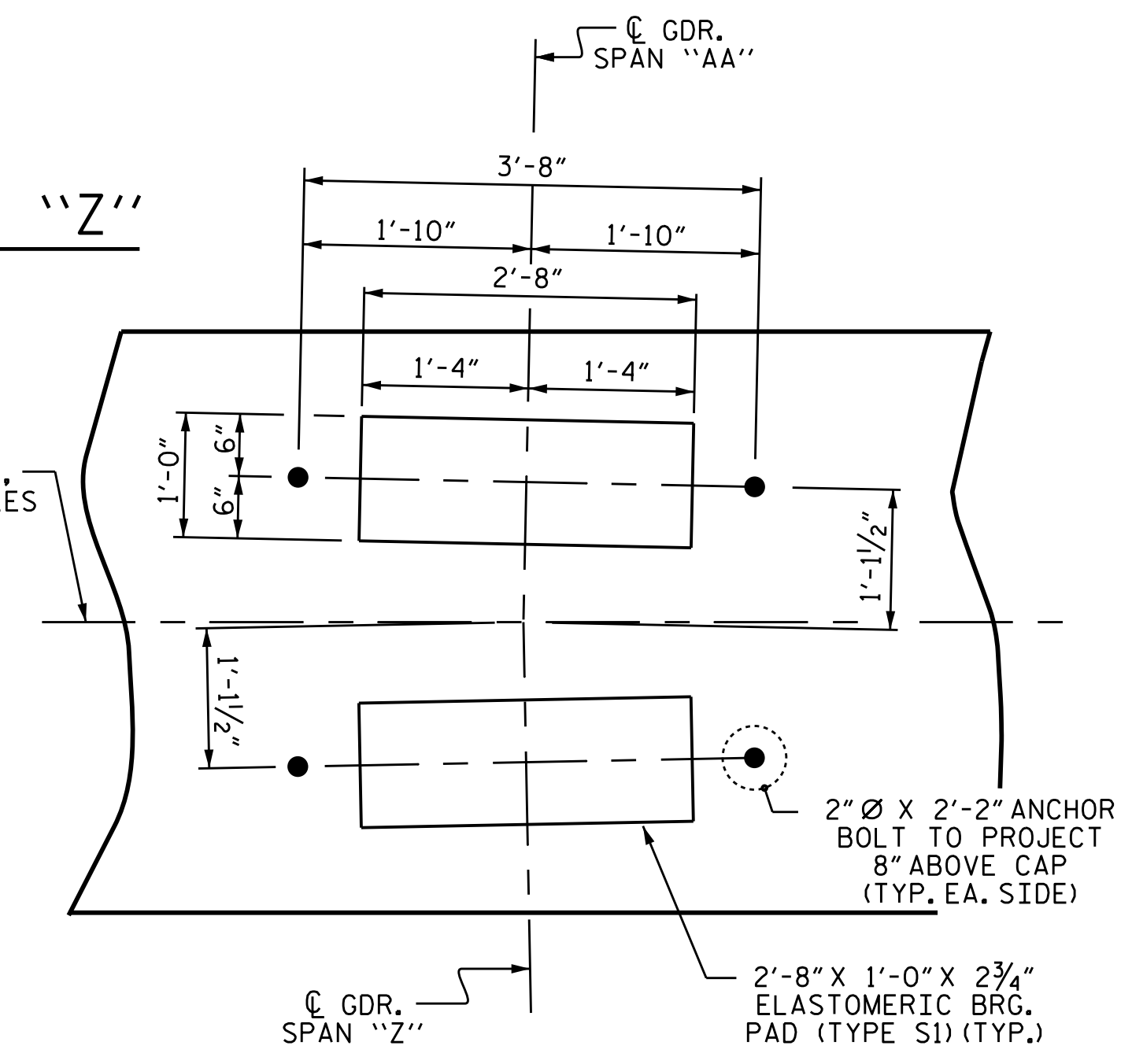
**ELEVATION**

FOR ADDITIONAL REINFORCING BARS IN ENDS OF CAP, SEE VIEW X-X AND VIEW Y-Y ON SHEET 2 OF 2.

**\*\* INVERT ALTERNATE STIRRUPS**

**SPAN "AA"**

**SPAN "Z"**

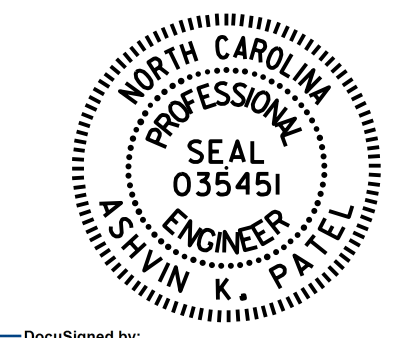


**DETAIL "A"**  
(TYP. @ EACH GDR.)

PROJECT NO. B-4863  
CARTERET COUNTY  
 STATION: 34+75.00 -L-

SHEET 1 OF 2

STATE OF NORTH CAROLINA  
 DEPARTMENT OF TRANSPORTATION  
 RALEIGH  
**SUBSTRUCTURE**  
**BENT #26**



DocuSigned by:  
 Ashwin Patel  
 7F189E9610244ED3  
 3/9/2020

DOCUMENT NOT CONSIDERED  
 FINAL UNLESS ALL  
 SIGNATURES COMPLETED

REVISIONS						SHEET NO.
NO.	BY:	DATE:	NO.	BY:	DATE:	TOTAL SHEETS
1			3			S1-183
2			4			194

DRAWN BY : T.L. AVERETTE DATE : 02/2019  
 CHECKED BY : A.K. PATEL DATE : 12/2019  
 DESIGN ENGINEER OF RECORD: A.K. PATEL DATE : 12/2019