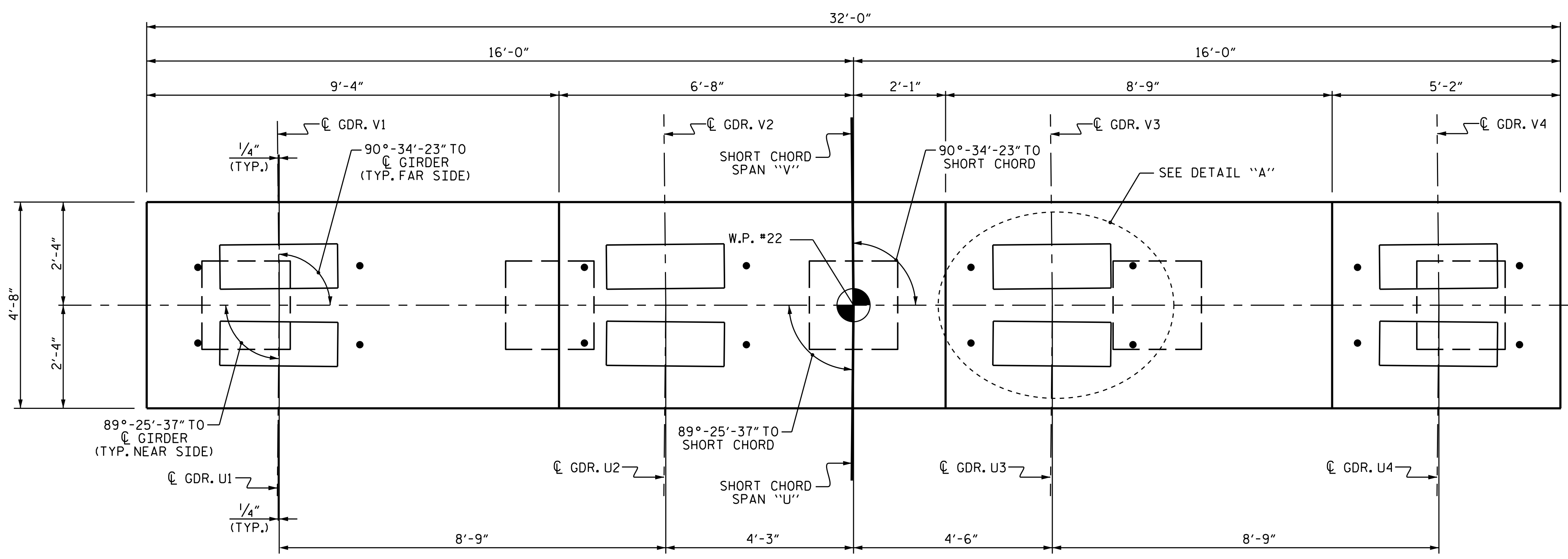
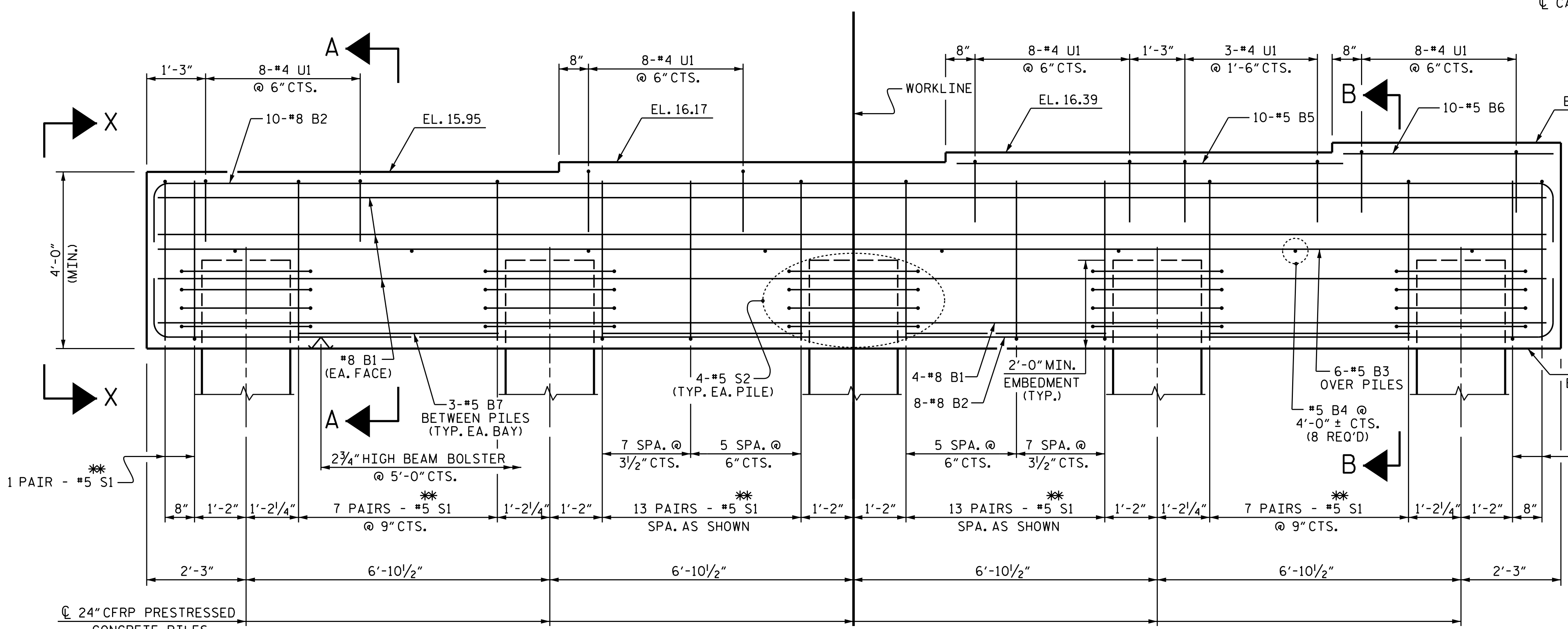


NOTES

STIRRUPS AND U1 BARS IN CAP MAY BE SHIFTED AS NECESSARY TO CLEAR ANCHOR BOLTS.
 CONCRETE DISPLACED BY CONCRETE PILES HAS BEEN DEDUCTED FROM THE CAP CONCRETE QUANTITY.
 ALL REINFORCING IN THE CAP IS TO BE GLASS FIBER REINFORCED POLYMER (GFRP) BARS. FOR GLASS FIBER REINFORCED POLYMER BARS, SEE SPECIAL PROVISIONS.



PLAN



ELEVATION

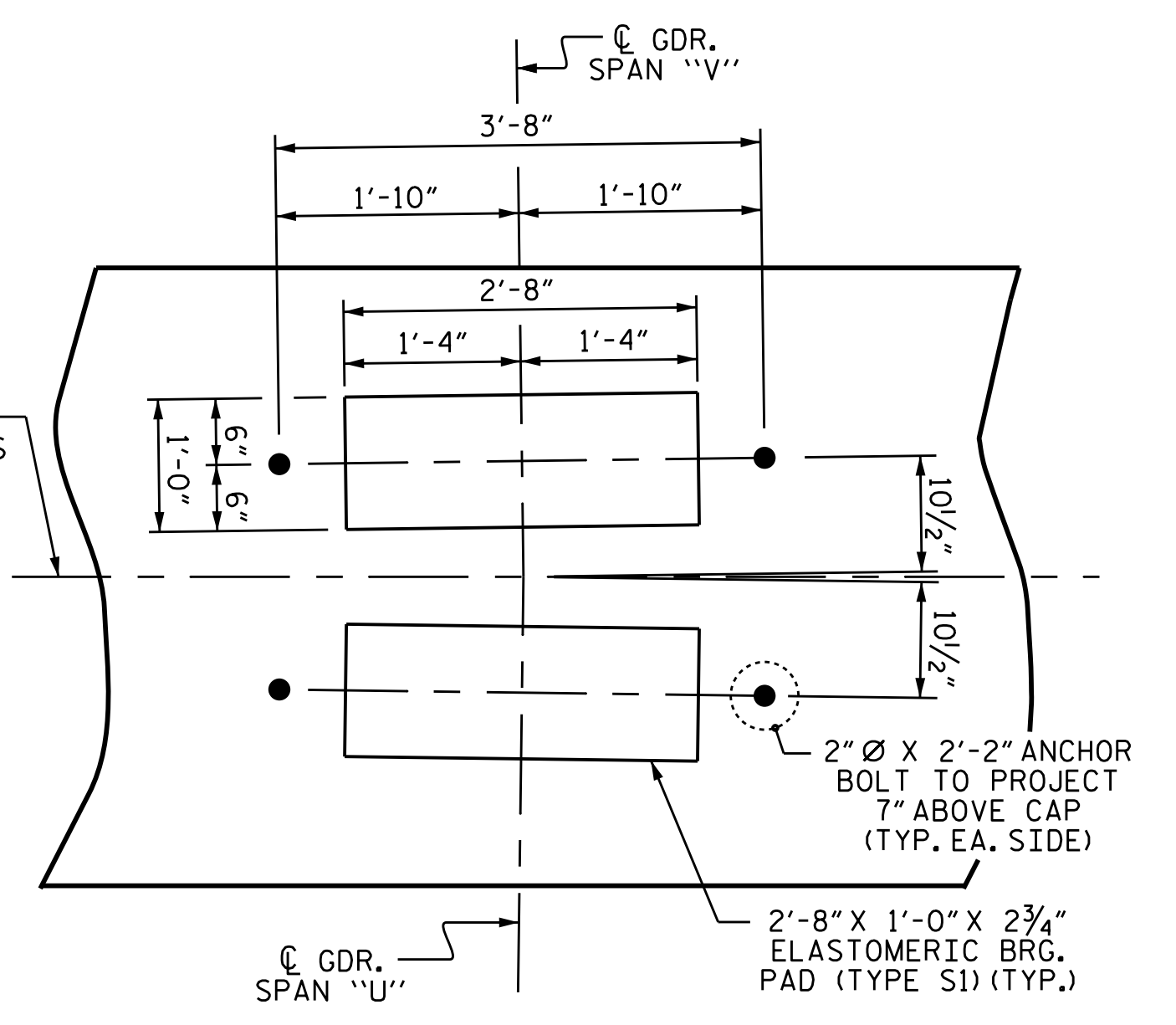
FOR ADDITIONAL REINFORCING BARS IN ENDS OF CAP, SEE VIEW X-X AND VIEW Y-Y ON SHEET 2 OF 2.

**** INVERT ALTERNATE STIRRUPS**

SPAN "V"

SPAN "U"

BENT #21
CONTROL LINE,
CL CAP & CL PILES

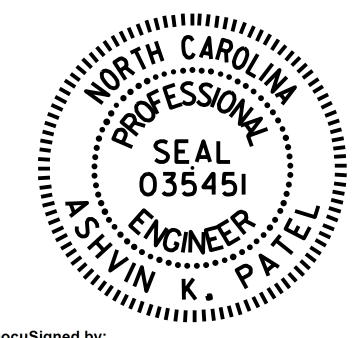


DETAIL "A"

(TYP. @ EACH GDR.)

PROJECT NO. B-4863
CARTERET COUNTY
 STATION: 34+75.00 -L-

SHEET 1 OF 2



DocuSigned by:
 Ashwin Patel
 7F189E5E10244D3
 3/9/2020

STATE OF NORTH CAROLINA
 DEPARTMENT OF TRANSPORTATION
 RALEIGH
SUBSTRUCTURE
BENT #21

DRAWN BY :	I.L. AVERETTE	DATE :	02/2019
CHECKED BY :	A.K. PATEL	DATE :	12/2019
DESIGN ENGINEER OF RECORD:	A.K. PATEL	DATE :	12/2019

DOCUMENT NOT CONSIDERED
 FINAL UNLESS ALL
 SIGNATURES COMPLETED

REVISIONS						SHEET NO.
NO.	BY:	DATE:	NO.	BY:	DATE:	S1-173
1			3			TOTAL SHEETS
2			4			194