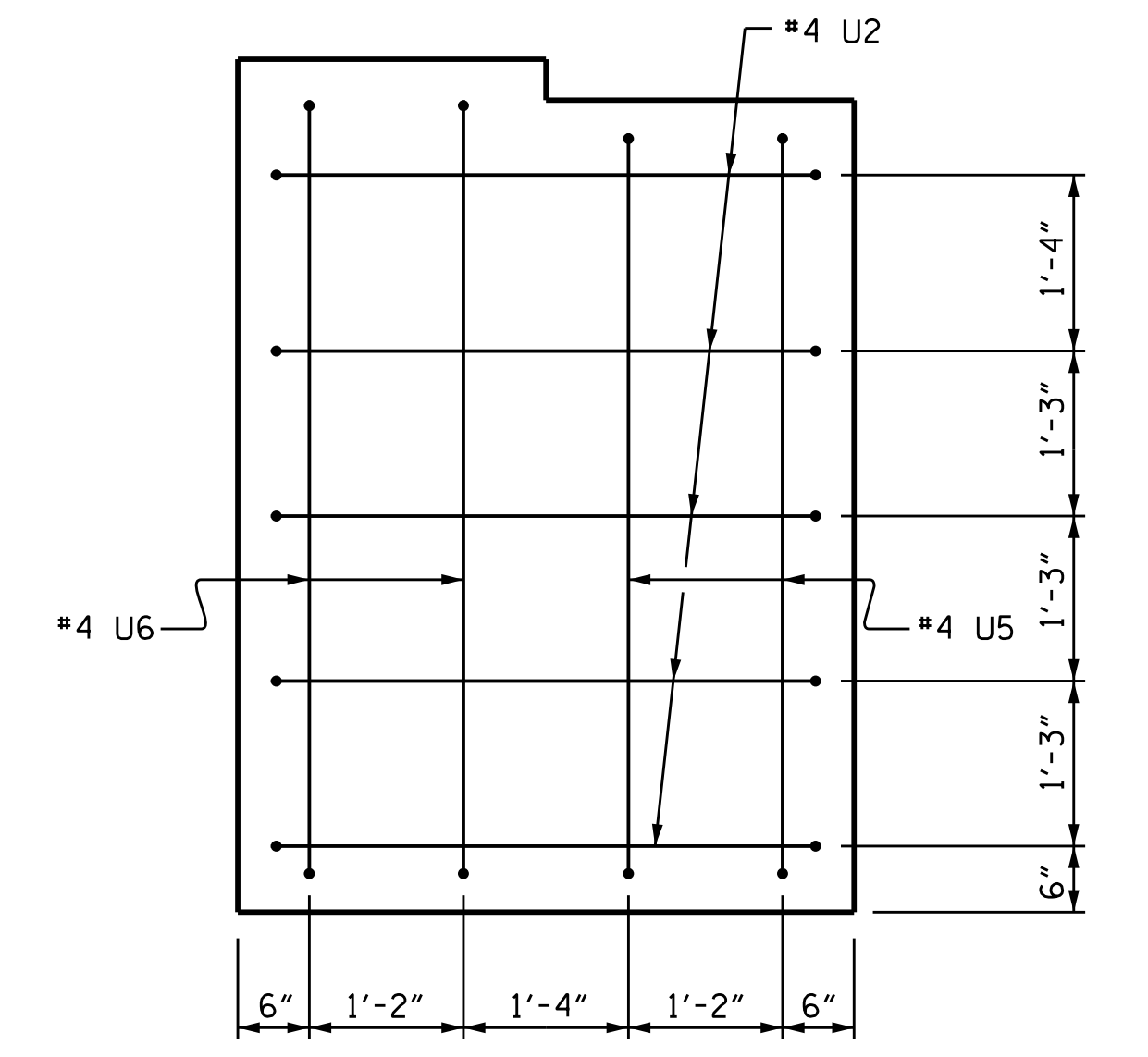
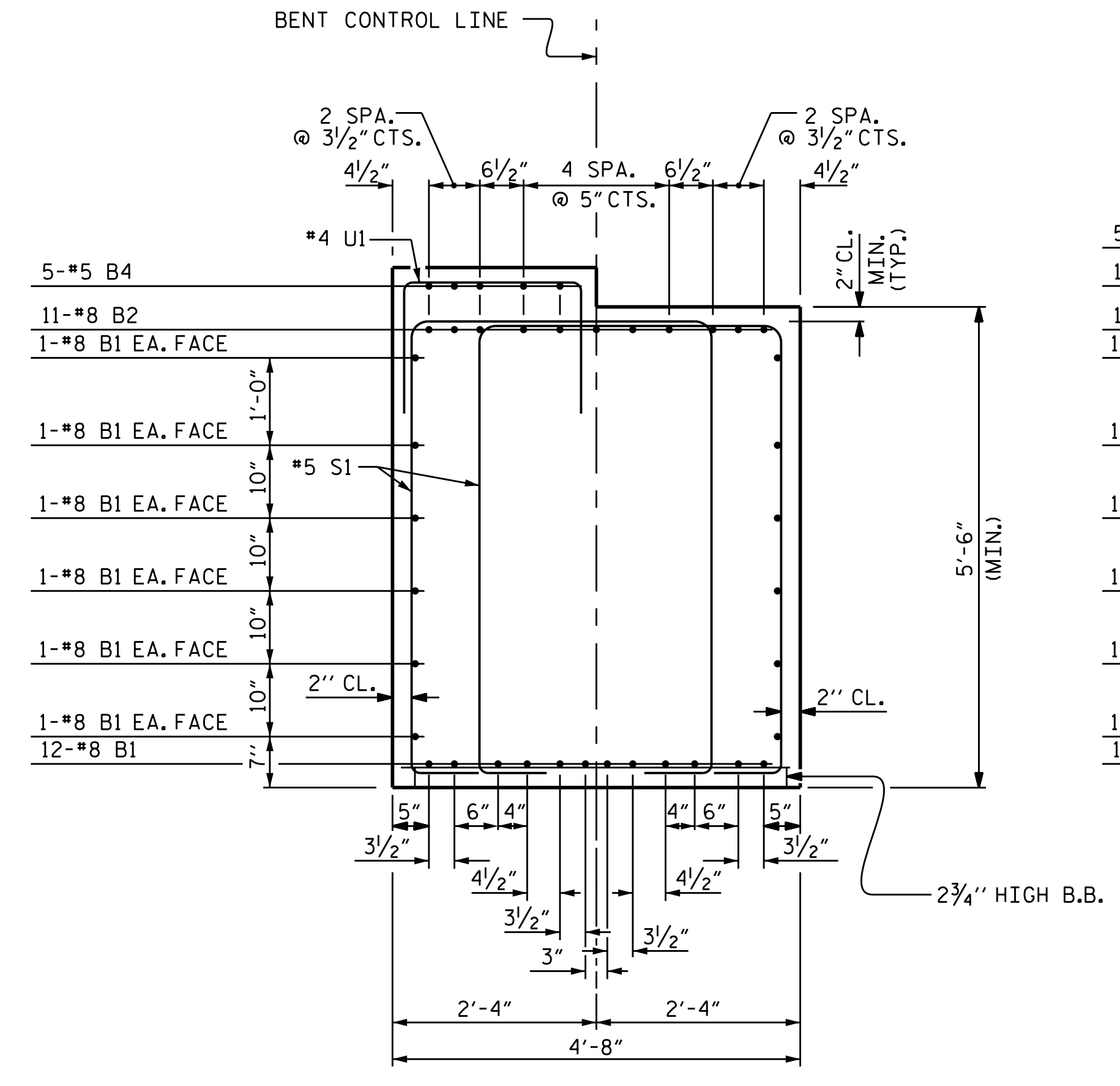


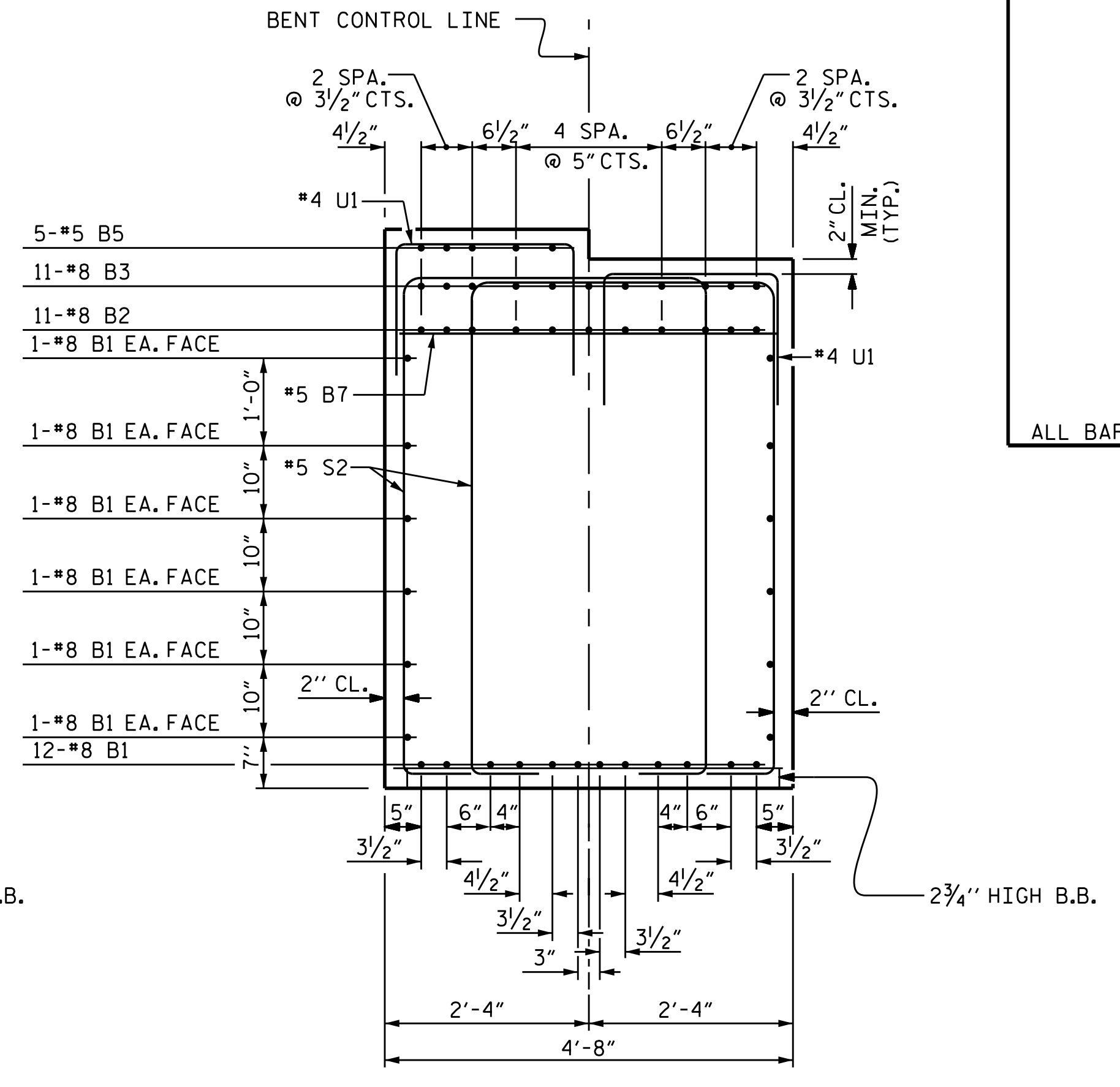
VIEW X-X



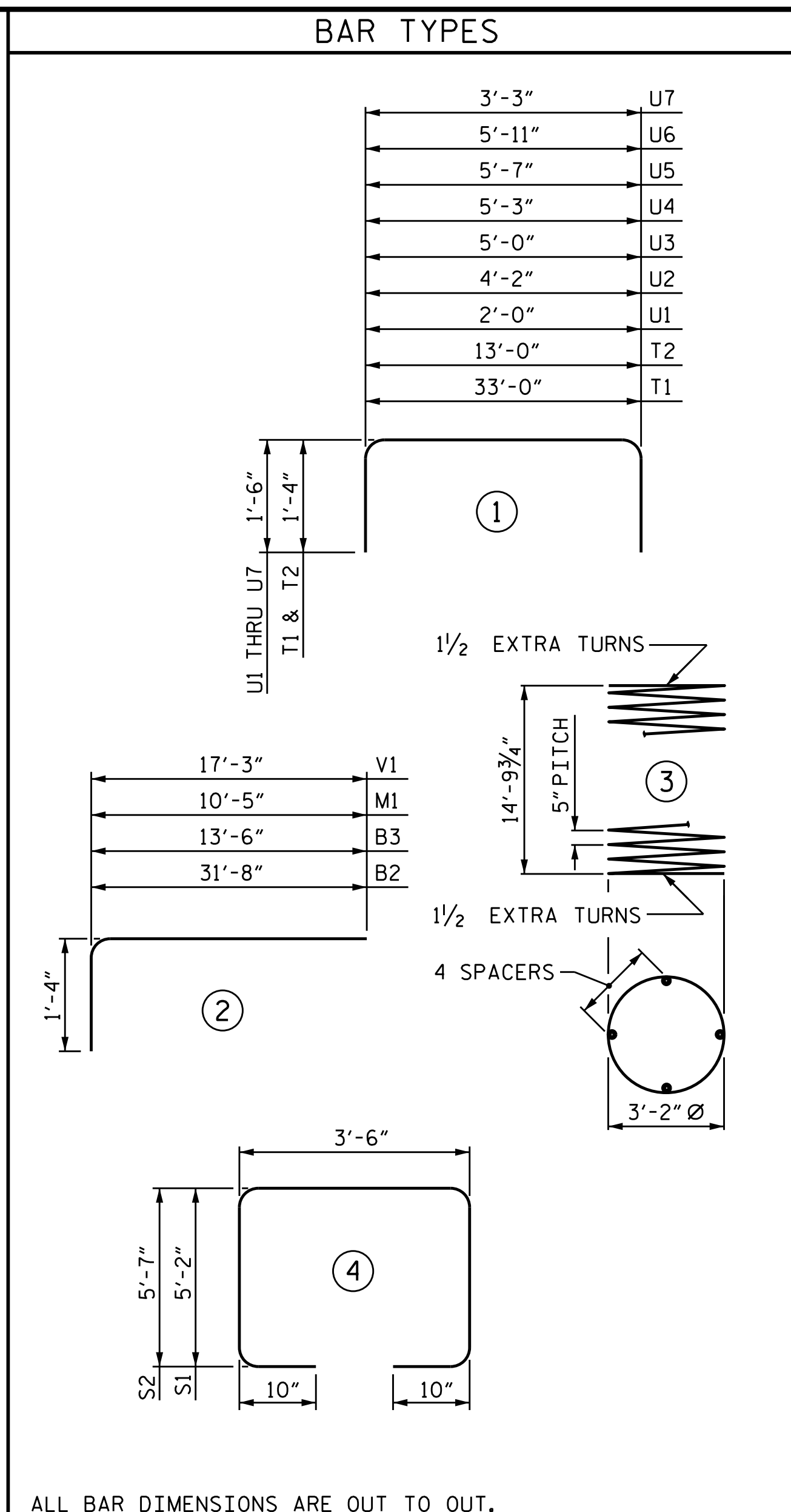
VIEW Y-Y



SECTION A-A



SECTION B-B

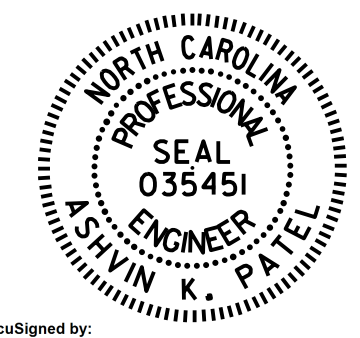


ALL BAR DIMENSIONS ARE OUT TO OUT.

BILL OF MATERIAL					
BENT #12					
BAR	NO.	SIZE	TYPE	LENGTH	TOTAL LENGTH
B1	24	#8	STR	31'-8"	760'-0"
B2	11	#8	2	33'-0"	363'-0"
B3	11	#8	2	14'-10"	163'-2"
B4	5	#5	STR	9'-5"	47'-1"
B5	10	#5	STR	8'-9"	87'-6"
B6	5	#5	STR	4'-9"	23'-9"
B7	3	#5	STR	4'-4"	13'-0"
M1	54	#8	2	11'-9"	634'-6"
S1	46	#5	4	15'-6"	713'-0"
S2	38	#5	4	16'-4"	620'-8"
T1	72	#8	1	35'-8"	2568'-0"
T2	48	#8	1	15'-8"	752'-0"
T3	102	#5	STR	13'-0"	1326'-0"
T4	6	#8	STR	33'-0"	198'-0"
T5	6	#8	STR	13'-0"	78'-0"
U1	74	#4	1	5'-0"	370'-0"
U2	9	#4	1	7'-2"	64'-6"
U3	2	#4	1	8'-0"	16'-0"
U4	2	#4	1	8'-3"	16'-6"
U5	2	#4	1	8'-7"	17'-2"
U6	2	#4	1	8'-11"	17'-10"
U7	54	#4	1	6'-3"	337'-6"
V1	54	#8	2	18'-7"	1003'-6"
SP-1	3	#5	3	378'-1"	1134'-3"
TOTAL LIN. FT. # 4 BARS					839.5
TOTAL LIN. FT. # 5 BARS					3965.2
TOTAL LIN. FT. # 8 BARS					6520.2
GLASS FIBER REINFORCED POLYMER BARS				TOTAL	11324.92 LIN. FT.

CLASS AA CONCRETE BREAKDOWN		
POUR #1	FOOTING	66.2 C.Y.
POUR #2	COLUMNS	15.6 C.Y.
POUR #3	CAP	32.8 C.Y.
TOTAL CLASS AA CONCRETE		114.6 C.Y.

PROJECT NO. B-4863
CARTERET COUNTY
 STATION: 34+75.00 -L-
 SHEET 3 OF 3



Designed by:
 Ashwin Patel
 7F180E5610244D3
 4/16/2021

STATE OF NORTH CAROLINA
 DEPARTMENT OF TRANSPORTATION
 RALEIGH
 SUBSTRUCTURE
 BENT #12

DRAWN BY : I.L. AVERETTE DATE : 02/2019
 CHECKED BY : A.K. PATEL DATE : 04/2019
 DESIGN ENGINEER OF RECORD: A.K. PATEL DATE : 04/2019

DOCUMENT NOT CONSIDERED FINAL UNLESS ALL SIGNATURES COMPLETED

REVISIONS						SHEET NO.
NO.	BY:	DATE:	NO.	BY:	DATE:	S1-156
1			3			TOTAL SHEETS
2			4			194