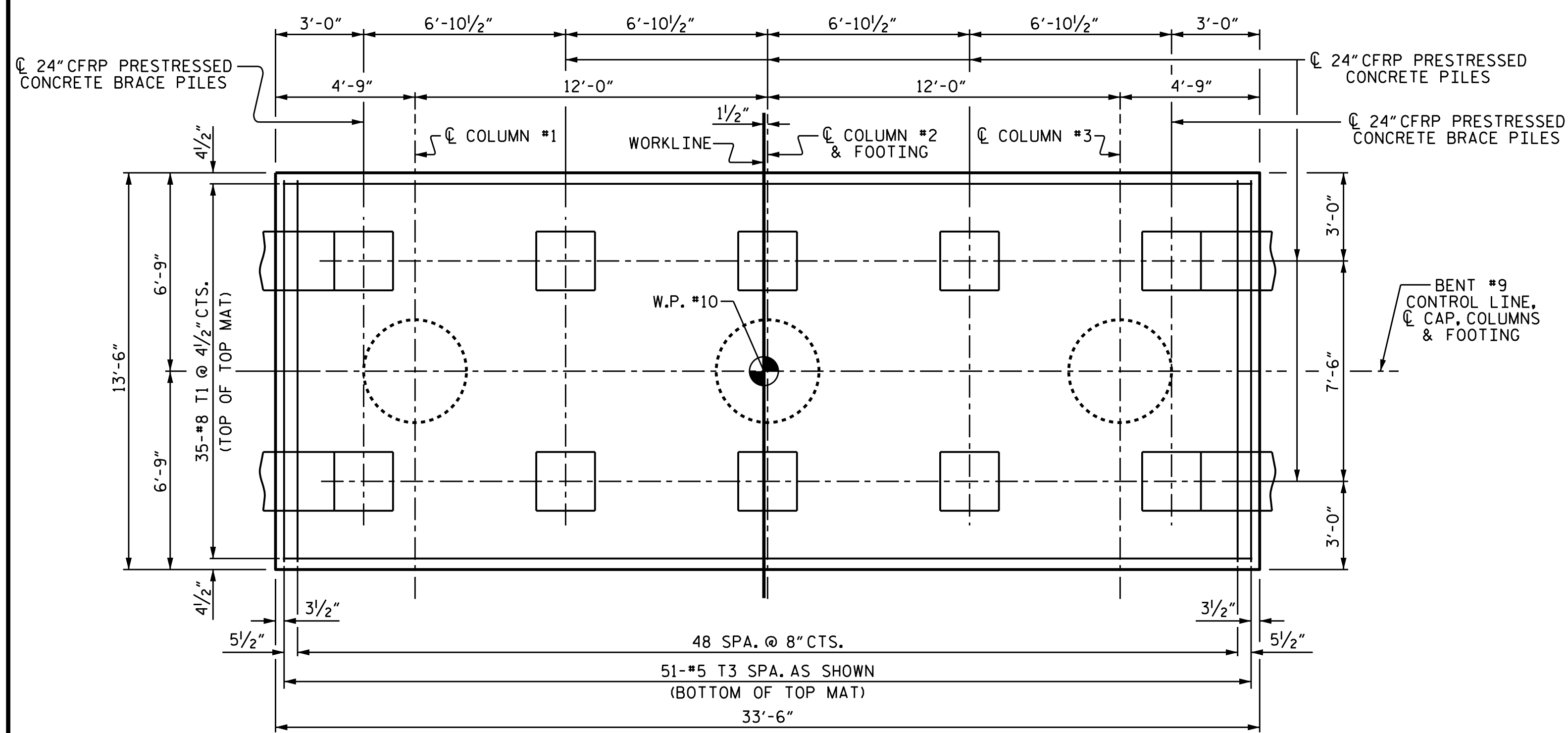


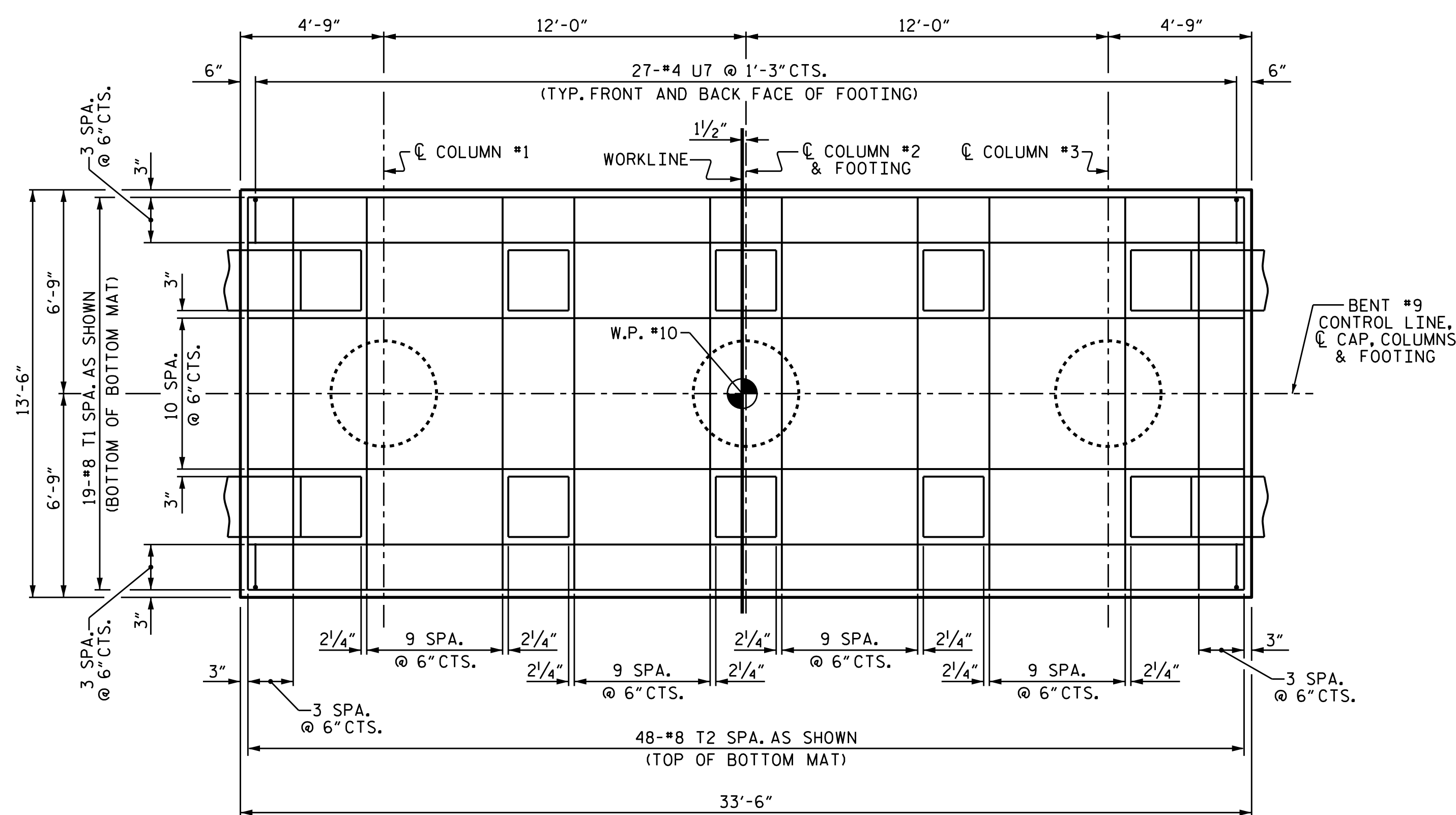
NOTES

FOR #8 T4 AND #8 T5 BARS ON EACH FACE OF FOOTING BETWEEN BOTTOM AND TOP MAT OF REINFORCING BARS, SEE SHEET 1 OF 3.

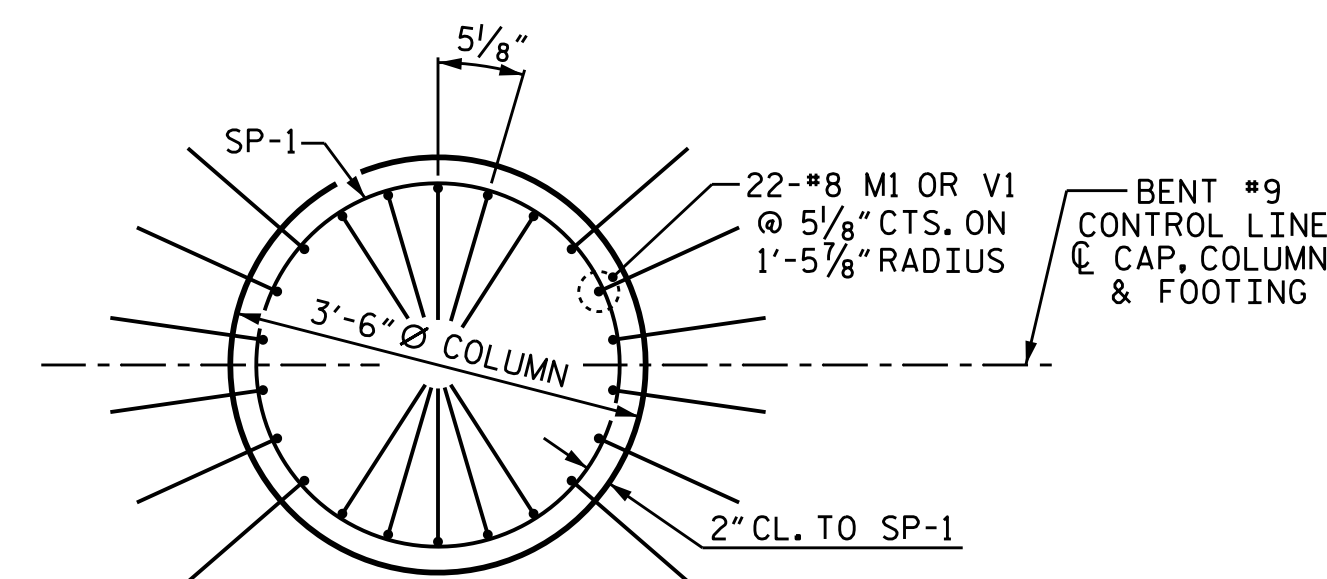
#4 U7 BARS MAY BE SHIFTED SLIGHTLY AS NECESSARY TO AVOID "T" BARS.



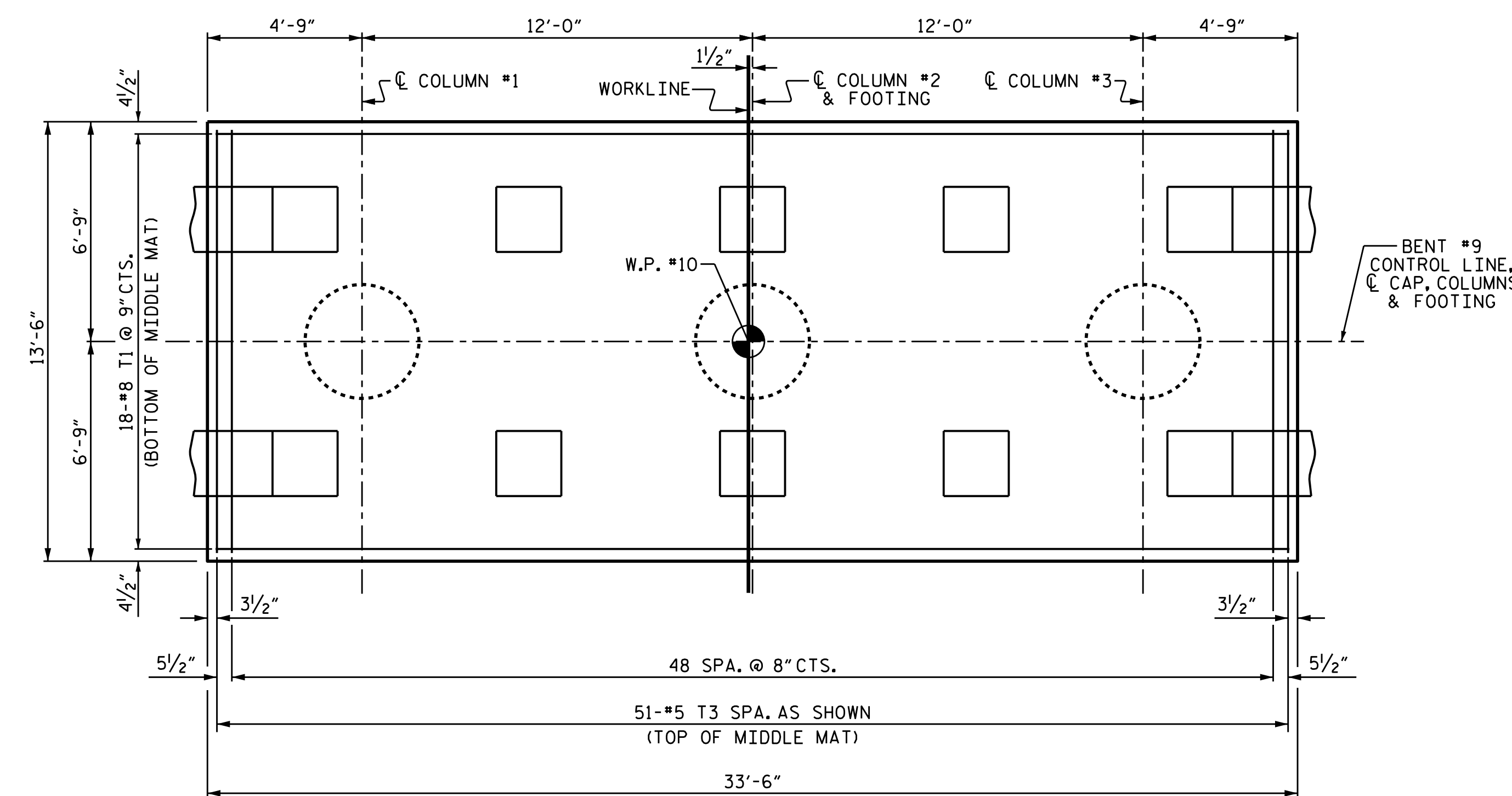
PLAN OF COLUMNS & FOOTING
SHOWING TOP MAT OF REINFORCING BARS



PLAN OF COLUMNS & FOOTING
SHOWING BOTTOM MAT OF REINFORCING BARS
AND TEMPERATURE REINFORCEMENT



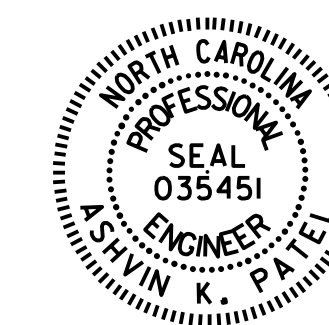
COLUMN REINFORCING DETAILS
TYPICAL FOR EACH COLUMN



PLAN OF COLUMNS & FOOTING
SHOWING MIDDLE MAT OF REINFORCING BARS

PROJECT NO. B-4863
CARTERET COUNTY
STATION: 34+75.00 -L-

SHEET 2 OF 3



DocuSigned by:
Ashwin Patel
7F189E5610244E3
3/9/2020

STATE OF NORTH CAROLINA					
DEPARTMENT OF TRANSPORTATION					
RALEIGH					
SUBSTRUCTURE					
BENT #9					

DRAWN BY : T.L. AVERETTE DATE : 02/2019
CHECKED BY : A. K. PATEL DATE : 04/2019
DESIGN ENGINEER OF RECORD: A. K. PATEL DATE : 04/2019

DOCUMENT NOT CONSIDERED
FINAL UNLESS ALL
SIGNATURES COMPLETED

REVISIONS						SHEET NO.
NO.	BY:	DATE:	NO.	BY:	DATE:	TOTAL SHEETS
1			3			S1-146
2			4			194