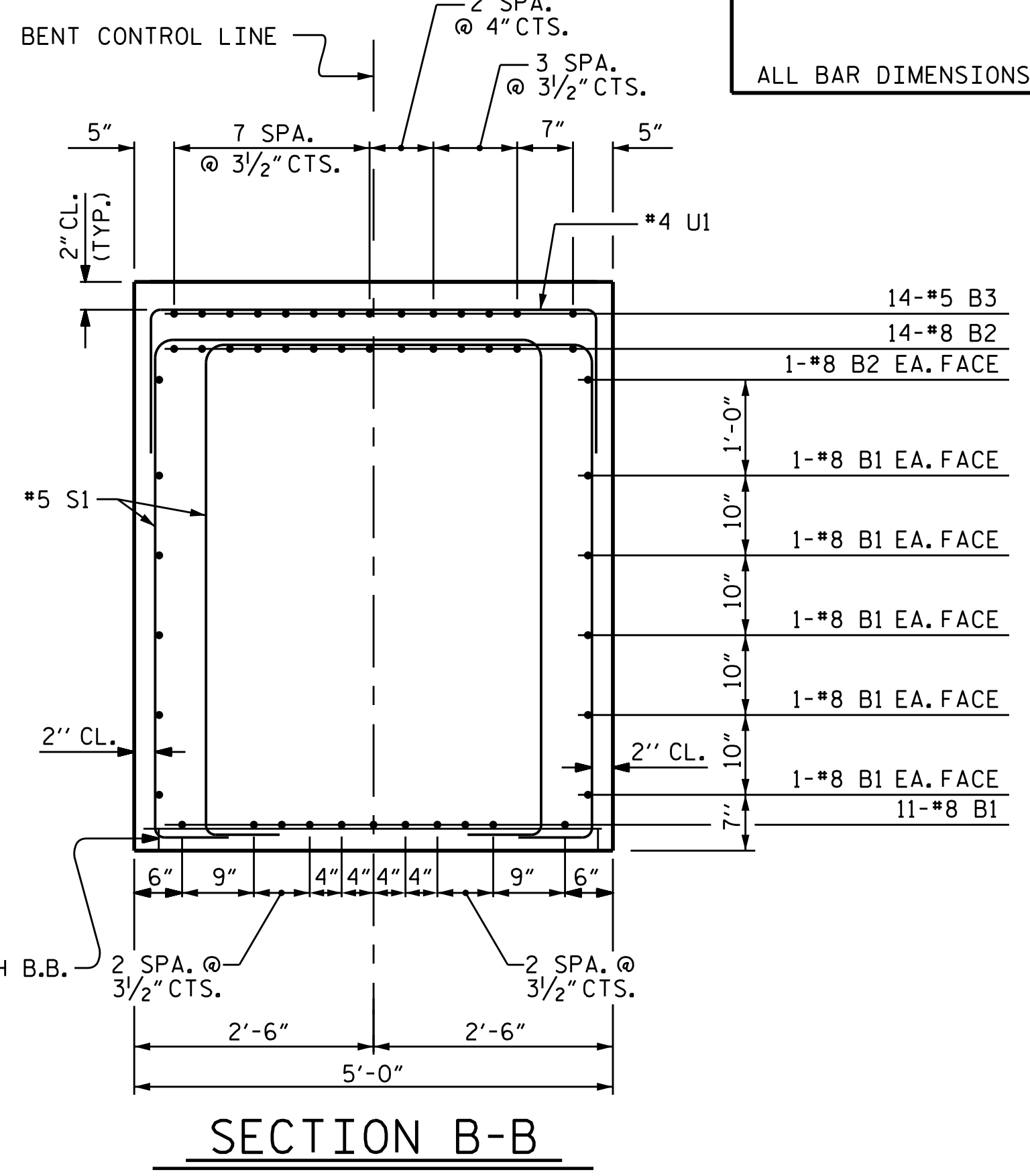
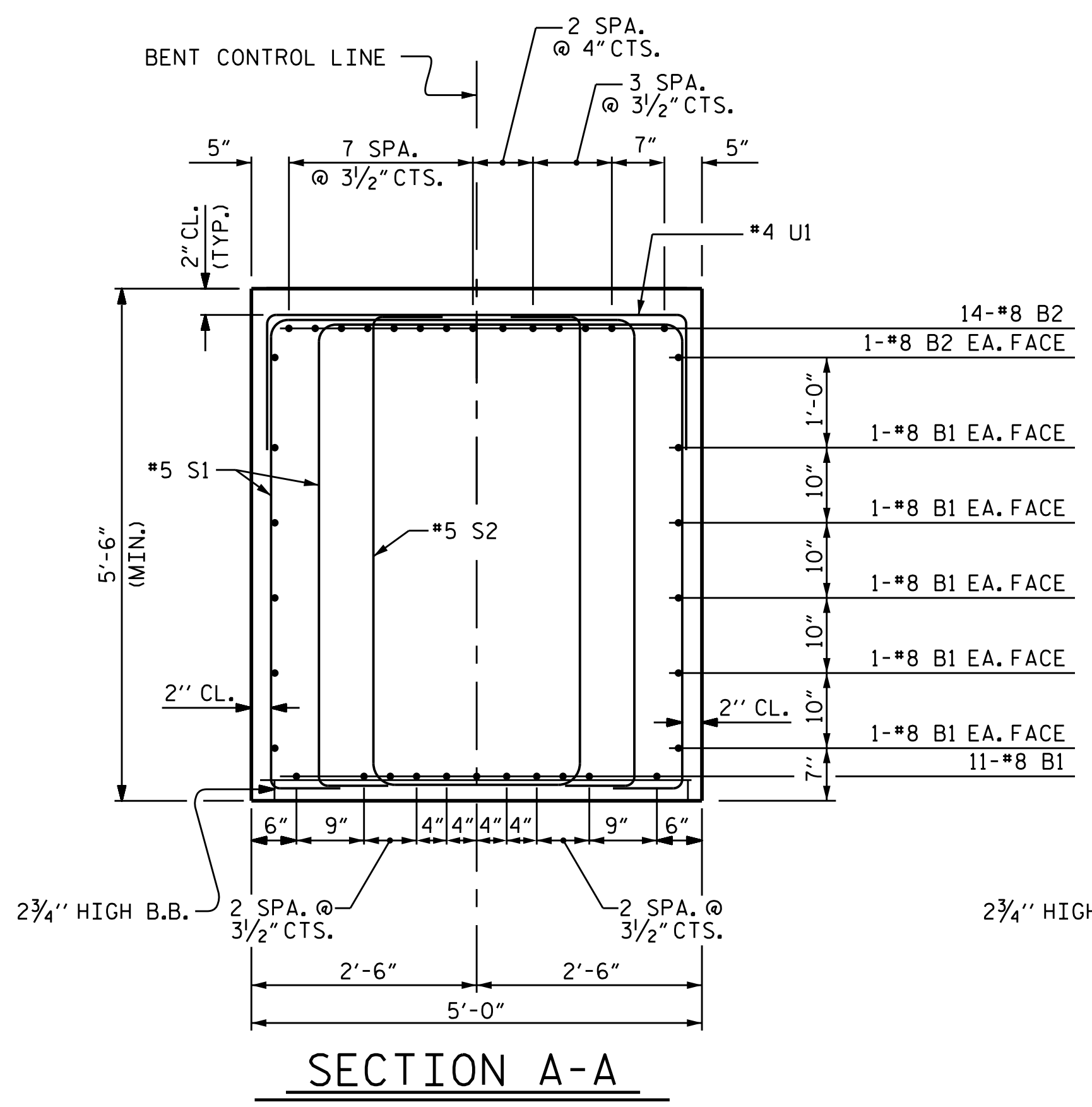
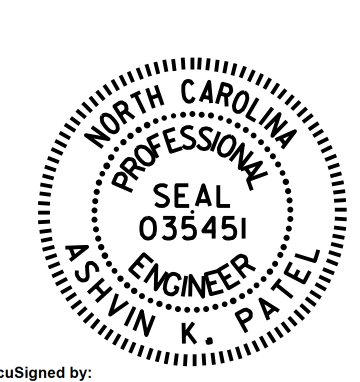


BILL OF MATERIAL											
BENT #8											
BAR NO.	SIZE	TYPE	LENGTH	WEIGHT	BAR NO.	SIZE	TYPE	LENGTH	LENGTH		
B1	23	#8	STR	38'-8"	889'-4"	T23	8	#8	STR	13'-5"	107'-4"
B2	14	#8	1	41'-2"	576'-4"	T24	8	#8	STR	32'-5"	259'-4"
B3	28	#5	STR	8'-3"	231'-0"	T25	20	#8	4	8'-3"	165'-0"
B4	14	#5	STR	5'-0"	70'-0"						
						U1	52	#4	1	7'-8"	398'-8"
						M1	96	#8	2	11'-9"	1128'-0"
						U2	9	#4	1	7'-6"	67'-6"
						U3	4	#4	1	8'-0"	32'-0"
						U4	4	#4	1	8'-6"	34'-0"
						U5	44	#4	1	6'-9"	297'-0"
S1	116	#5	5	16'-1"	1865'-8"						
S2	10	#5	5	14'-4"	143'-4"						
T1	67	#8	1	38'-2"	2557'-2"	V1	96	#8	2	36'-0"	3456'-0"
T2	108	#8	STR	15'-10"	1710'-0"						
T3	60	#5	STR	15'-10"	950'-0"	SP-1	3	#5	3	925'-1"	2775'-3"
T4	2	#5	STR	13'-5"	26'-10"						
T5	2	#5	STR	14'-11"	29'-10"						
T6	2	#5	STR	15'-6"	31'-0"						
T7	2	#8	1	35'-1"	70'-2"						
T8	2	#8	1	36'-8"	73'-4"						
T9	2	#8	1	37'-5"	74'-10"						
T10	2	#8	1	37'-10"	75'-8"						
T11	2	#8	1	38'-1"	76'-2"						
T12	2	#8	STR	13'-1"	26'-2"						
T13	2	#8	STR	14'-4"	28'-8"						
T14	2	#8	STR	15'-0"	30'-0"						
T15	2	#8	1	35'-5"	70'-10"						
T16	2	#8	1	36'-8"	73'-4"						
T17	2	#8	1	37'-4"	74'-8"						
T18	2	#8	STR	13'-5"	26'-10"						
T19	2	#8	STR	14'-11"	29'-10"						
T20	2	#8	STR	15'-6"	31'-0"						
T21	2	#8	1	35'-1"	70'-2"						
T22	2	#8	1	37'-5"	74'-10"						
									TOTAL LIN. FT. # 4 BARS	829.2	
									TOTAL LIN. FT. # 5 BARS	6122.9	
									TOTAL LIN. FT. # 8 BARS	11755.0	
									GLASS FIBER REINFORCED POLYMER BARS	18707.08 LIN. FT.	
CLASS AA CONCRETE BREAKDOWN											
									POUR #1 FOOTING	95.8 C.Y.	
									POUR #2 COLUMNS	44.7 C.Y.	
									POUR #3 CAP	41.6 C.Y.	
									TOTAL CLASS AA CONCRETE	182.1 C.Y.	



ALL BAR DIMENSIONS ARE OUT TO OUT.

PROJECT NO. B-4863
CARTERET COUNTY
 STATION: 34+75.00 -L-
 SHEET 3 OF 3



STATE OF NORTH CAROLINA DEPARTMENT OF TRANSPORTATION RALEIGH						SHEET NO. S1-144
SUBSTRUCTURE BENT #8						TOTAL SHEETS 194
REVISIONS						
NO.	BY:	DATE:	NO.	BY:	DATE:	
1			3			
2			4			

DRAWN BY : I.L. AVERETTE DATE : 02/2019
 CHECKED BY : A.K. PATEL DATE : 12/2019
 DESIGN ENGINEER OF RECORD: A.K. PATEL DATE : 12/2019

DOCUMENT NOT CONSIDERED FINAL UNLESS ALL SIGNATURES COMPLETED