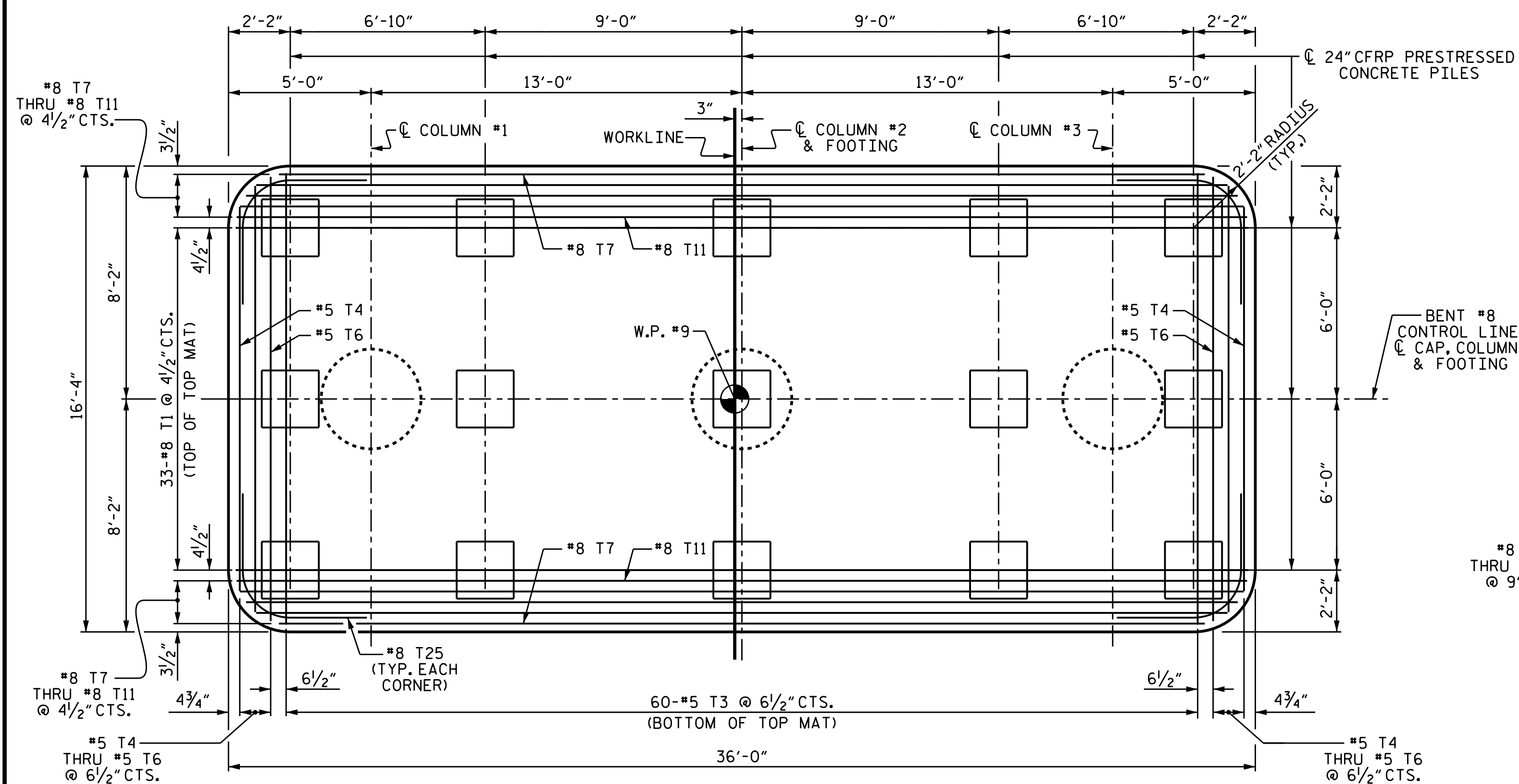


**NOTES**

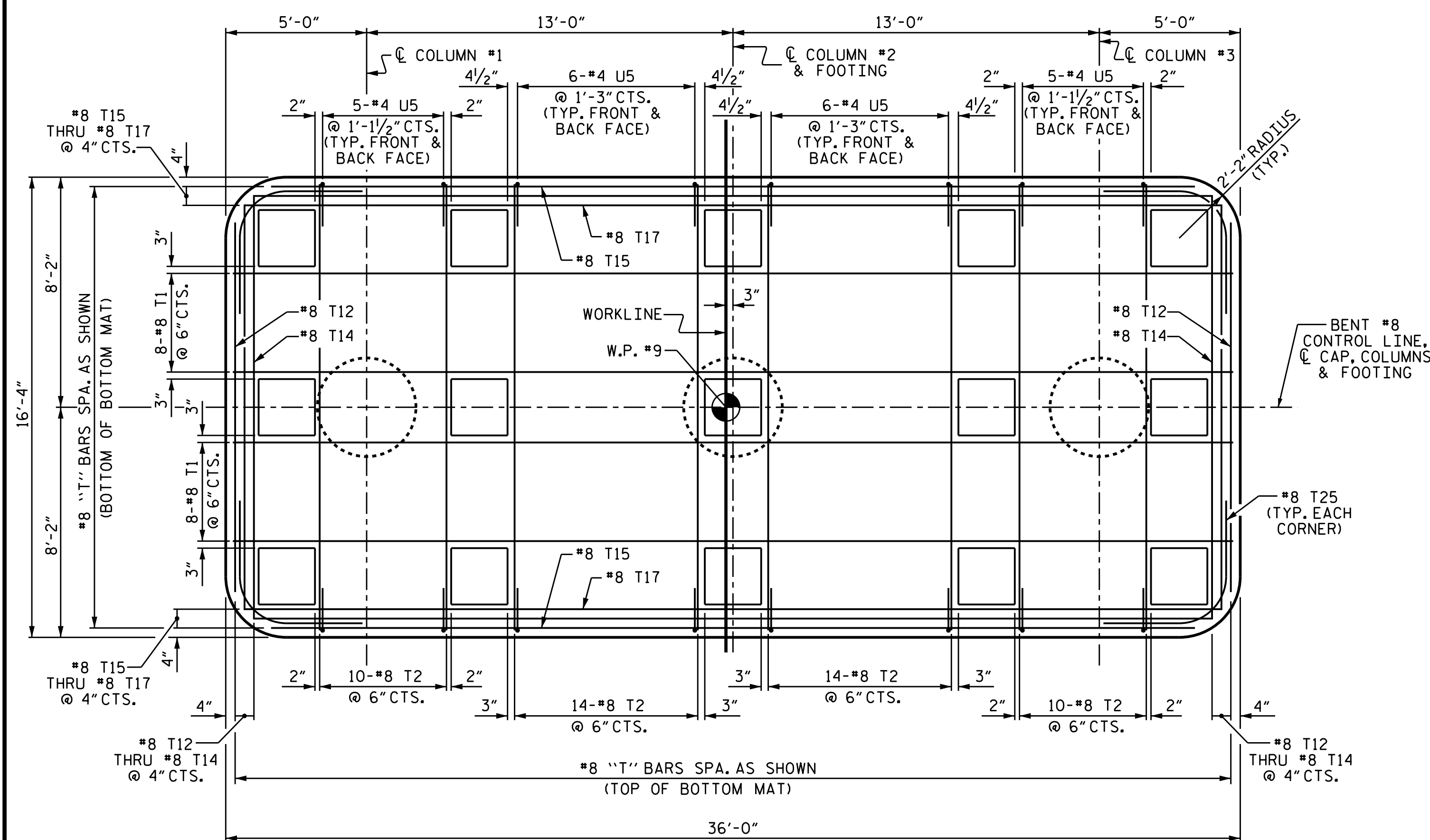
FOR #8 T23 AND #8 T24 BARS ON EACH FACE OF FOOTING BETWEEN BOTTOM AND TOP MAT OF REINFORCING BARS, SEE SHEET 1 OF 3.

FOR #8 T25 CORNER BAR SPACING, SEE SHEET 1 OF 3.

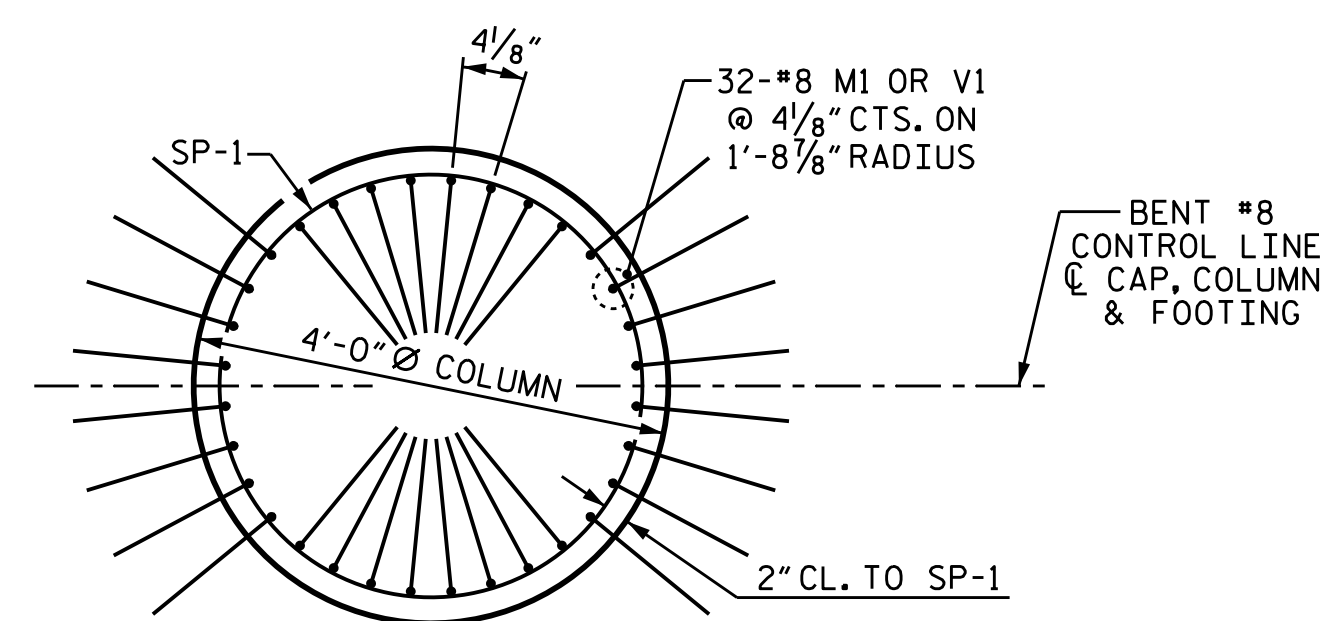
#4 U5 BARS MAY BE SHIFTED SLIGHTLY AS NECESSARY TO AVOID "T" BARS.



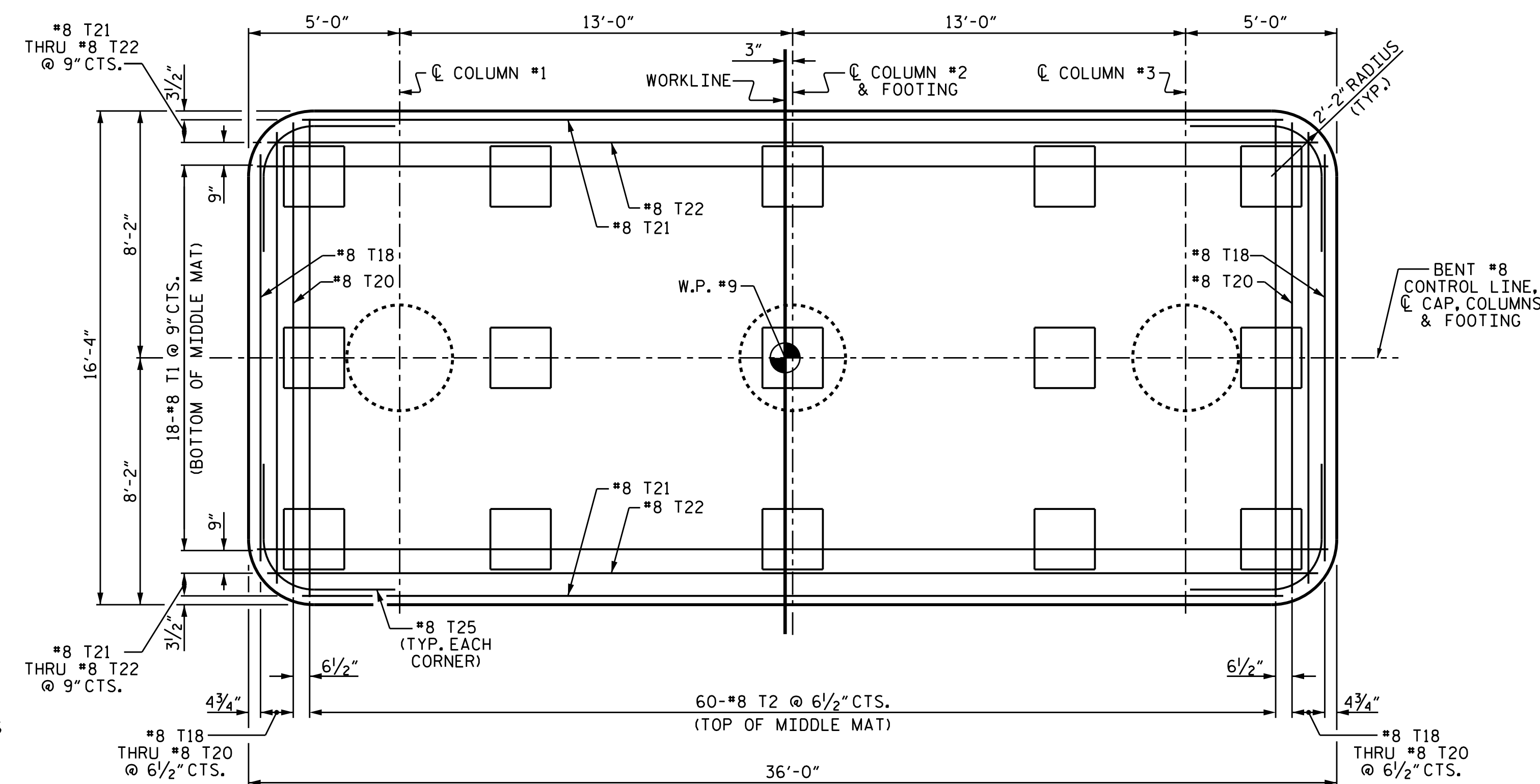
**PLAN OF COLUMNS & FOOTING**  
SHOWING TOP MAT OF REINFORCING BARS



**PLAN OF COLUMNS & FOOTING**  
SHOWING BOTTOM MAT OF REINFORCING BARS  
AND TEMPERATURE REINFORCEMENT



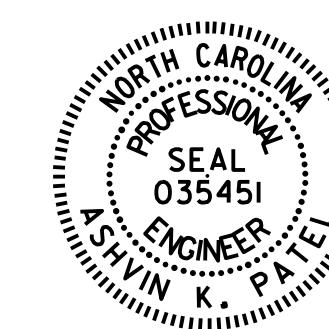
**COLUMN REINFORCING DETAILS**  
TYPICAL FOR EACH COLUMN



**PLAN OF COLUMNS & FOOTING**  
SHOWING MIDDLE MAT OF REINFORCING BARS

DRAWN BY : T.L. AVERETTE DATE : 02/2019  
 CHECKED BY : A.K. PATEL DATE : 12/2019  
 DESIGN ENGINEER OF RECORD : A.K. PATEL DATE : 12/2019

06-MAR-2020 12:30  
 S:\DEV\Squad.D\B4863\Plans\FINAL PLANS\B-4863.SMU.B1 B15.dgn  
 bbarodawala



DocuSigned by:  
 Ashwin Patel  
 7F189E5E10244E3  
 3/9/2020

PROJECT NO. B-4863  
CARTERET COUNTY  
 STATION: 34+75.00 -L-  
 SHEET 2 OF 3

STATE OF NORTH CAROLINA  
 DEPARTMENT OF TRANSPORTATION  
 RALEIGH

SUBSTRUCTURE  
 BENT #8

DOCUMENT NOT CONSIDERED  
 FINAL UNLESS ALL  
 SIGNATURES COMPLETED

REVISIONS						SHEET NO.
NO.	BY:	DATE:	NO.	BY:	DATE:	TOTAL SHEETS
1			3			S1-143
2			4			194