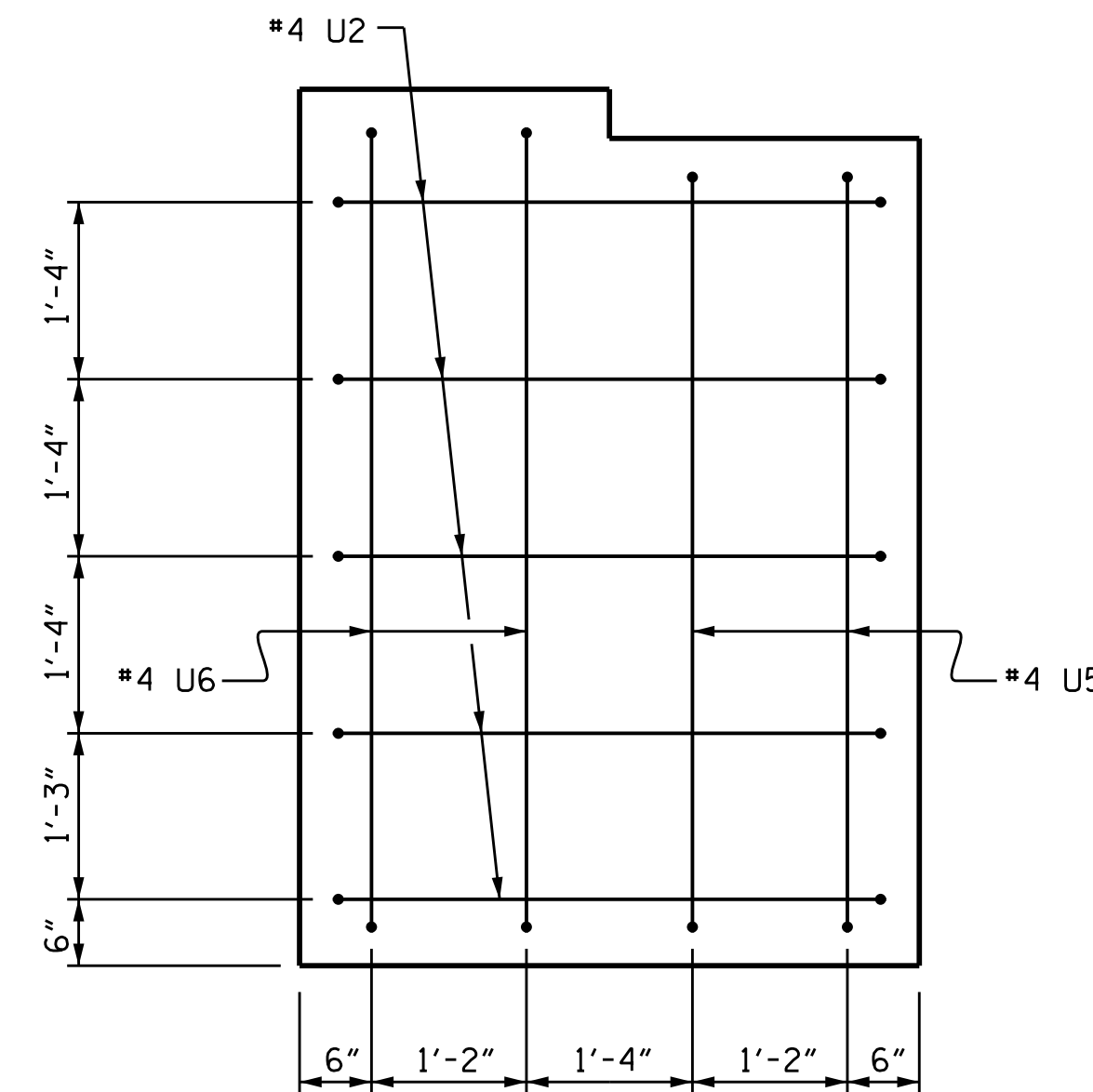
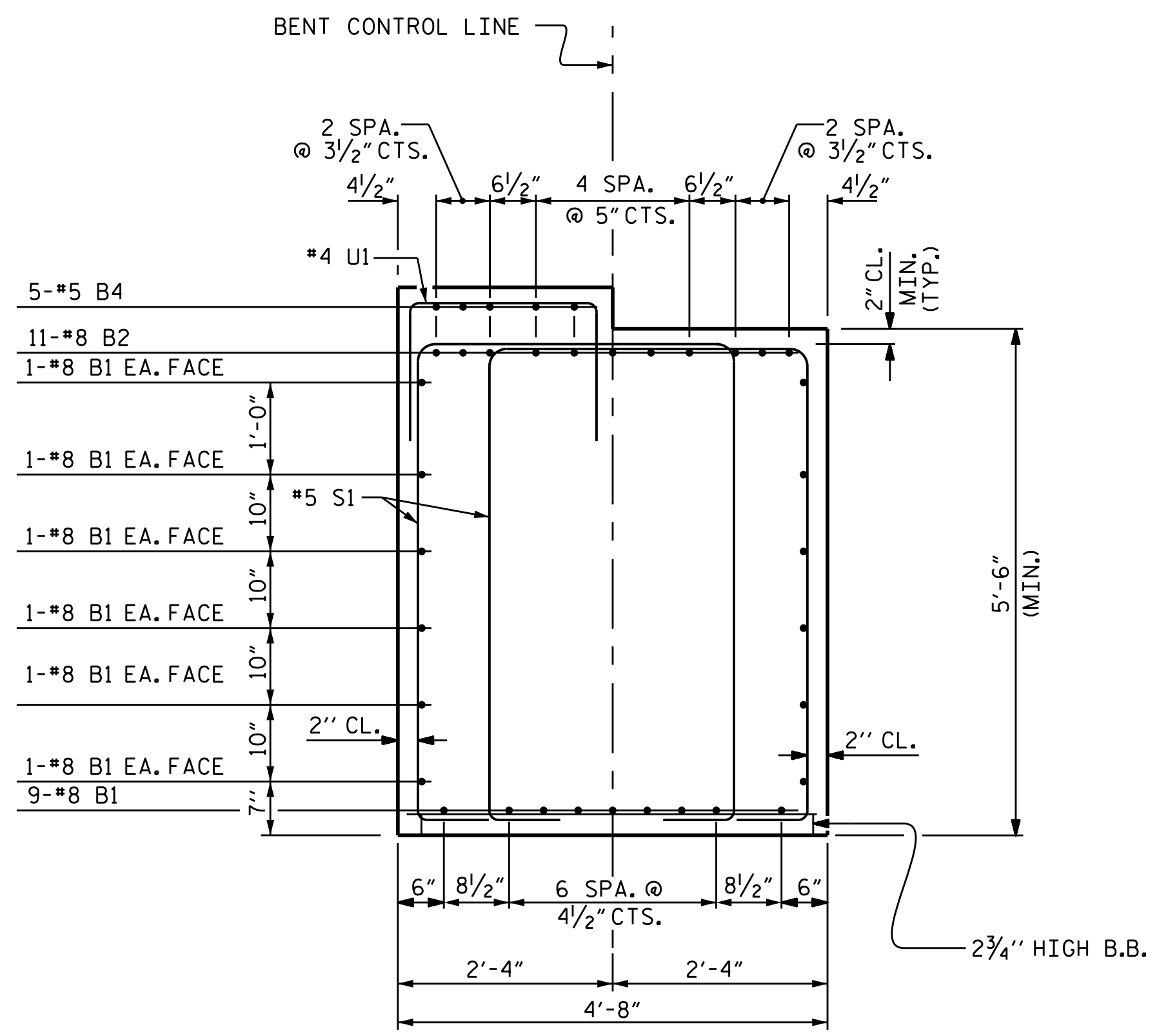


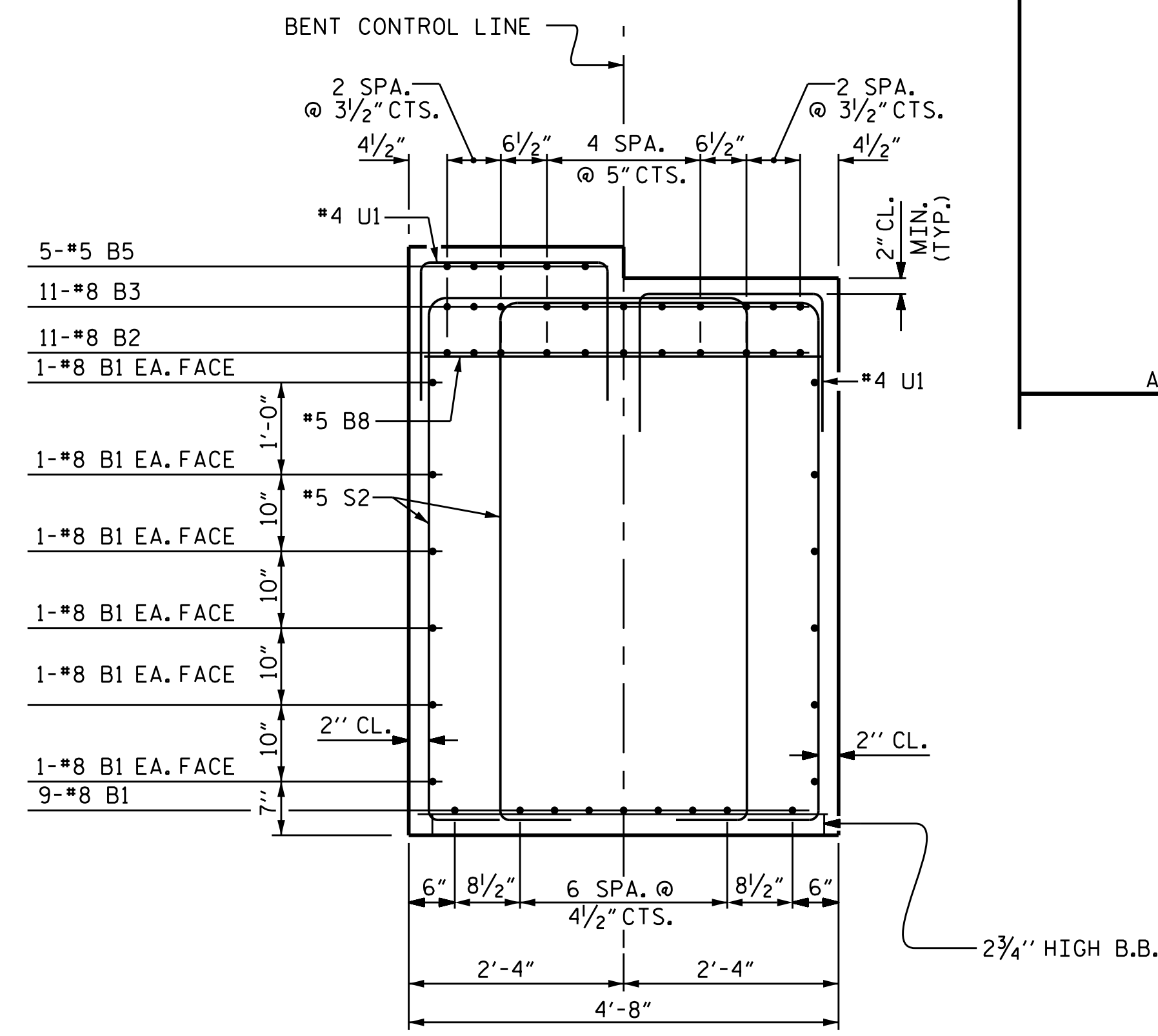
VIEW X-X



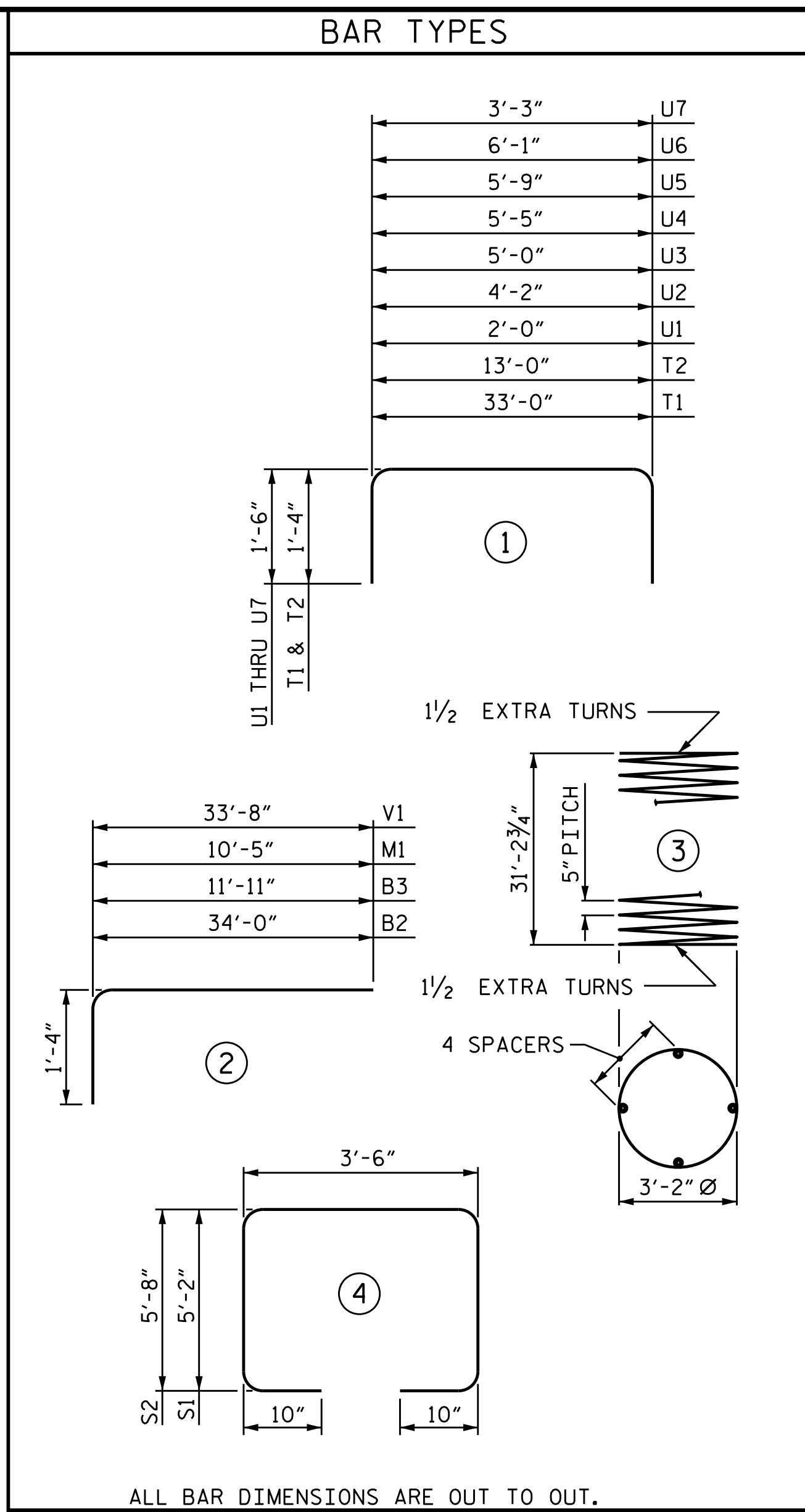
VIEW Y-Y



SECTION A-A



SECTION B-B



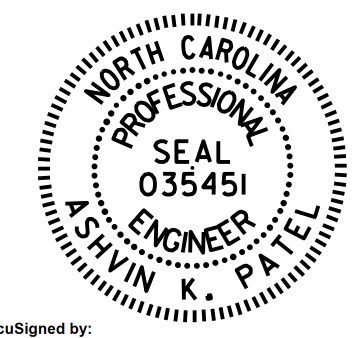
BILL OF MATERIAL					
BENT #6					
BAR	NO.	SIZE	TYPE	LENGTH	LENGTH
B1	21	#8	STR	34'-0"	714'-0"
B2	11	#8	2	35'-4"	388'-8"
B3	11	#8	2	13'-3"	145'-9"
B4	5	#5	STR	10'-5"	52'-1"
B5	10	#5	STR	8'-9"	87'-6"
B6	5	#5	STR	6'-0"	30'-0"
B7	5	#5	STR	7'-3"	36'-3"
B8	3	#5	STR	4'-4"	13'-0"
M1	66	#8	2	11'-9"	775'-6"
S1	54	#5	4	15'-6"	837'-0"
S2	30	#5	4	16'-6"	495'-0"
T1	72	#8	1	35'-8"	2568'-0"
T2	48	#8	1	15'-8"	752'-0"
T3	102	#5	STR	13'-0"	1326'-0"
T4	6	#8	STR	33'-0"	198'-0"
T5	6	#8	STR	13'-0"	78'-0"
U1	94	#4	1	5'-0"	470'-0"
U2	9	#4	1	7'-2"	64'-6"
U3	2	#4	1	8'-0"	16'-0"
U4	2	#4	1	8'-5"	16'-10"
U5	2	#4	1	8'-9"	17'-6"
U6	2	#4	1	9'-1"	18'-2"
U7	54	#4	1	6'-3"	337'-6"
V1	66	#8	2	35'-0"	2310'-0"
SP-1	3	#5	3	773'-6"	2320'-6"

TOTAL LIN. FT. # 4 BARS	940.5
TOTAL LIN. FT. # 5 BARS	5197.3
TOTAL LIN. FT. # 8 BARS	7929.9
GLASS FIBER REINFORCED POLYMER BARS	14067.75 LIN. FT.
CLASS AA CONCRETE BREAKDOWN	
POUR #1 FOOTING	66.2 C.Y.
POUR #2 COLUMNS	33.1 C.Y.
POUR #3 CAP	35.8 C.Y.
TOTAL CLASS AA CONCRETE	135.1 C.Y.

PROJECT NO. B-4863
CARTERET COUNTY
 STATION: 34+75.00 -L-

SHEET 3 OF 3

STATE OF NORTH CAROLINA
 DEPARTMENT OF TRANSPORTATION
 RALEIGH
 SUBSTRUCTURE
 BENT #6



Designed by:
 Ashwin Patel
 771806561024403
 4/16/2021

DOCUMENT NOT CONSIDERED FINAL UNLESS ALL SIGNATURES COMPLETED

REVISIONS						SHEET NO.
NO.	BY:	DATE:	NO.	BY:	DATE:	S1-138
1			3			TOTAL SHEETS 194
2			4			

DRAWN BY : I.L. AVERETTE DATE : 02/2019
 CHECKED BY : A.K. PATEL DATE : 12/2019
 DESIGN ENGINEER OF RECORD: A.K. PATEL DATE : 12/2019

08-APR-2021 11:10
 S:\DEV\Squad.D\B4863\Plans\FINAL PLANS\B-4863.SMU.B6.dgn
 akpatel