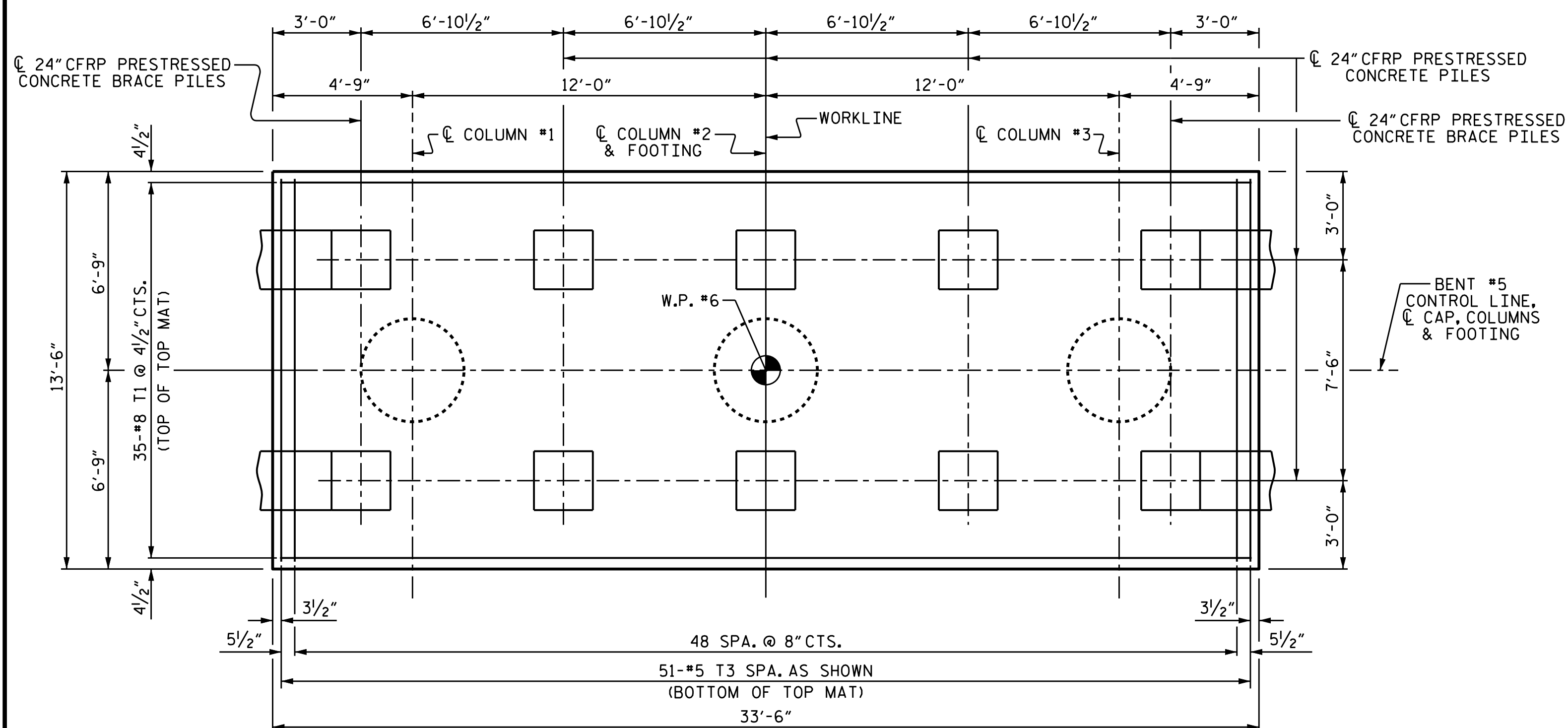


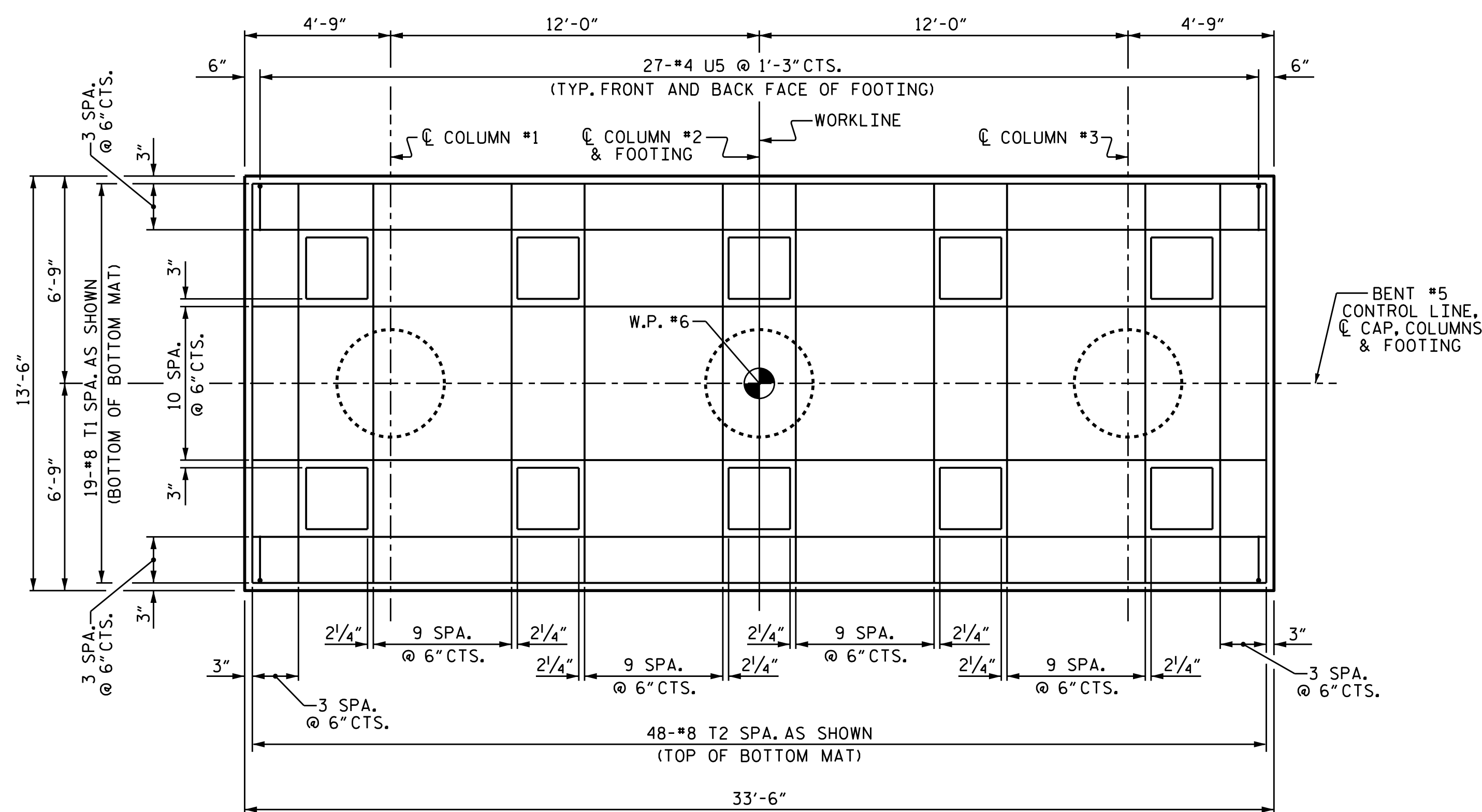
**NOTES**

FOR #8 T4 AND #8 T5 BARS ON EACH FACE OF FOOTING BETWEEN BOTTOM AND TOP MAT OF REINFORCING BARS, SEE SHEET 1 OF 3.

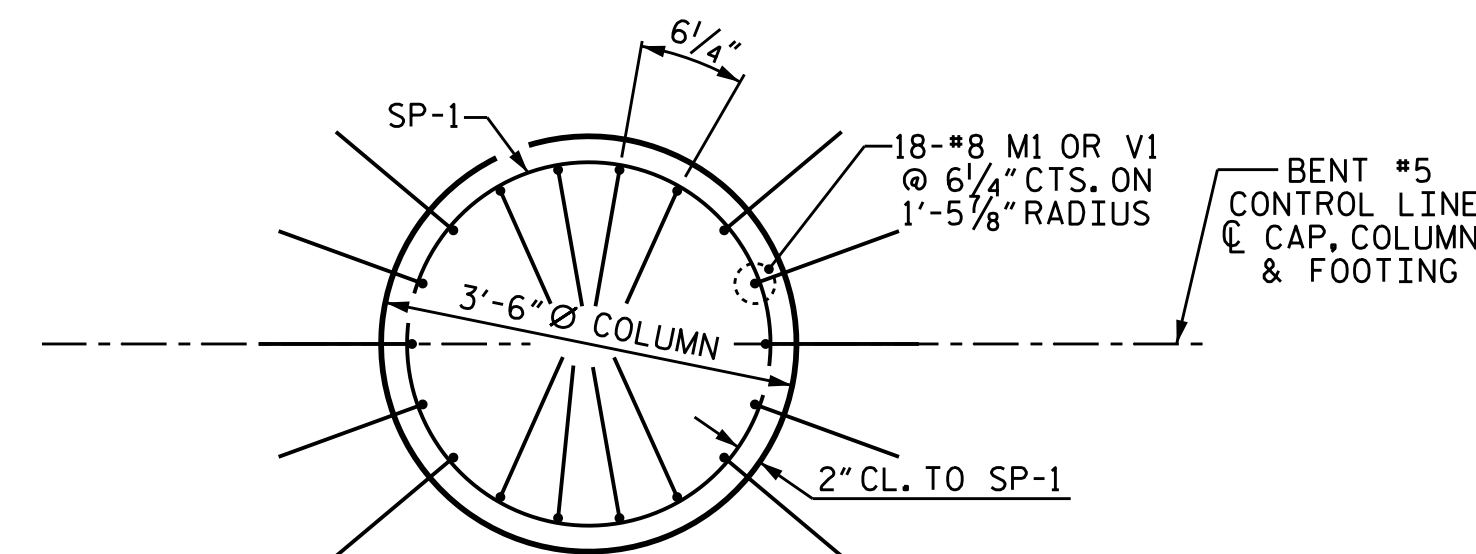
#4 U5 BARS MAY BE SHIFTED SLIGHTLY AS NECESSARY TO AVOID "T" BARS.



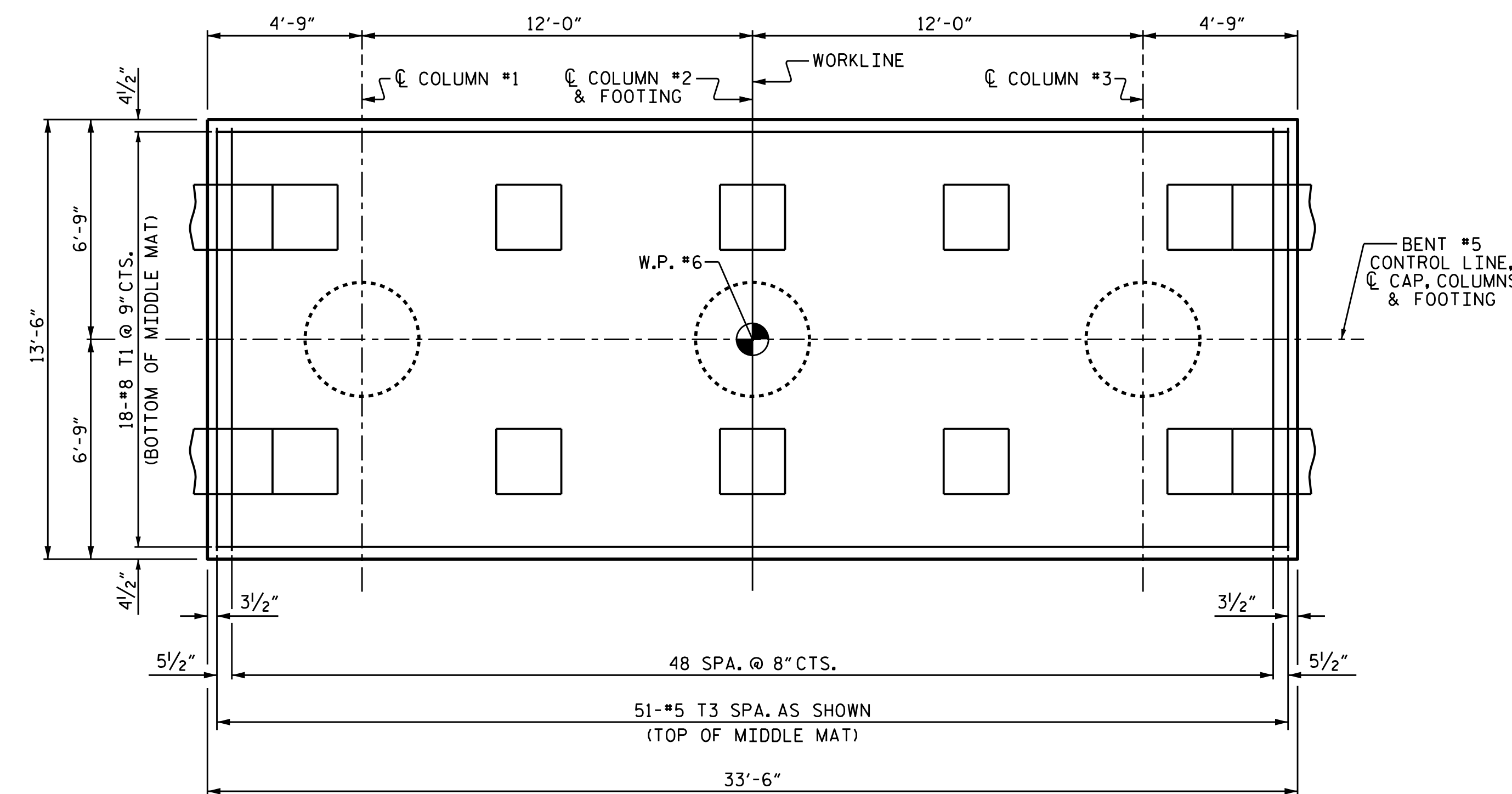
**PLAN OF COLUMNS & FOOTING**  
SHOWING TOP MAT OF REINFORCING BARS



**PLAN OF COLUMNS & FOOTING**  
SHOWING BOTTOM MAT OF REINFORCING BARS  
AND TEMPERATURE REINFORCEMENT



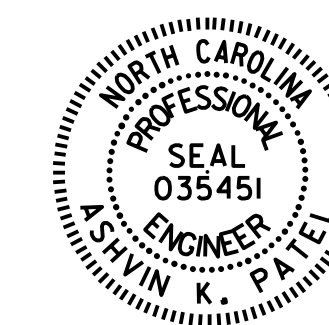
**COLUMN REINFORCING DETAILS**  
TYPICAL FOR EACH COLUMN



**PLAN OF COLUMNS & FOOTING**  
SHOWING MIDDLE MAT OF REINFORCING BARS

PROJECT NO. B-4863  
CARTERET COUNTY  
STATION: 34+75.00 -L-

SHEET 2 OF 3



DocuSigned by:  
Ashwin Patel  
7F189E5610244E3  
3/9/2020

STATE OF NORTH CAROLINA  
DEPARTMENT OF TRANSPORTATION  
RALEIGH

SUBSTRUCTURE

BENT #5

DRAWN BY: I.L. AVERETTE DATE: 02/2019  
CHECKED BY: A.K. PATEL DATE: 04/2019  
DESIGN ENGINEER OF RECORD: A.K. PATEL DATE: 04/2019

DOCUMENT NOT CONSIDERED  
FINAL UNLESS ALL  
SIGNATURES COMPLETED

| REVISIONS |     |       |     |     |       | SHEET NO.    |
|-----------|-----|-------|-----|-----|-------|--------------|
| NO.       | BY: | DATE: | NO. | BY: | DATE: | TOTAL SHEETS |
| 1         |     |       | 3   |     |       | S1-134       |
| 2         |     |       | 4   |     |       | 194          |