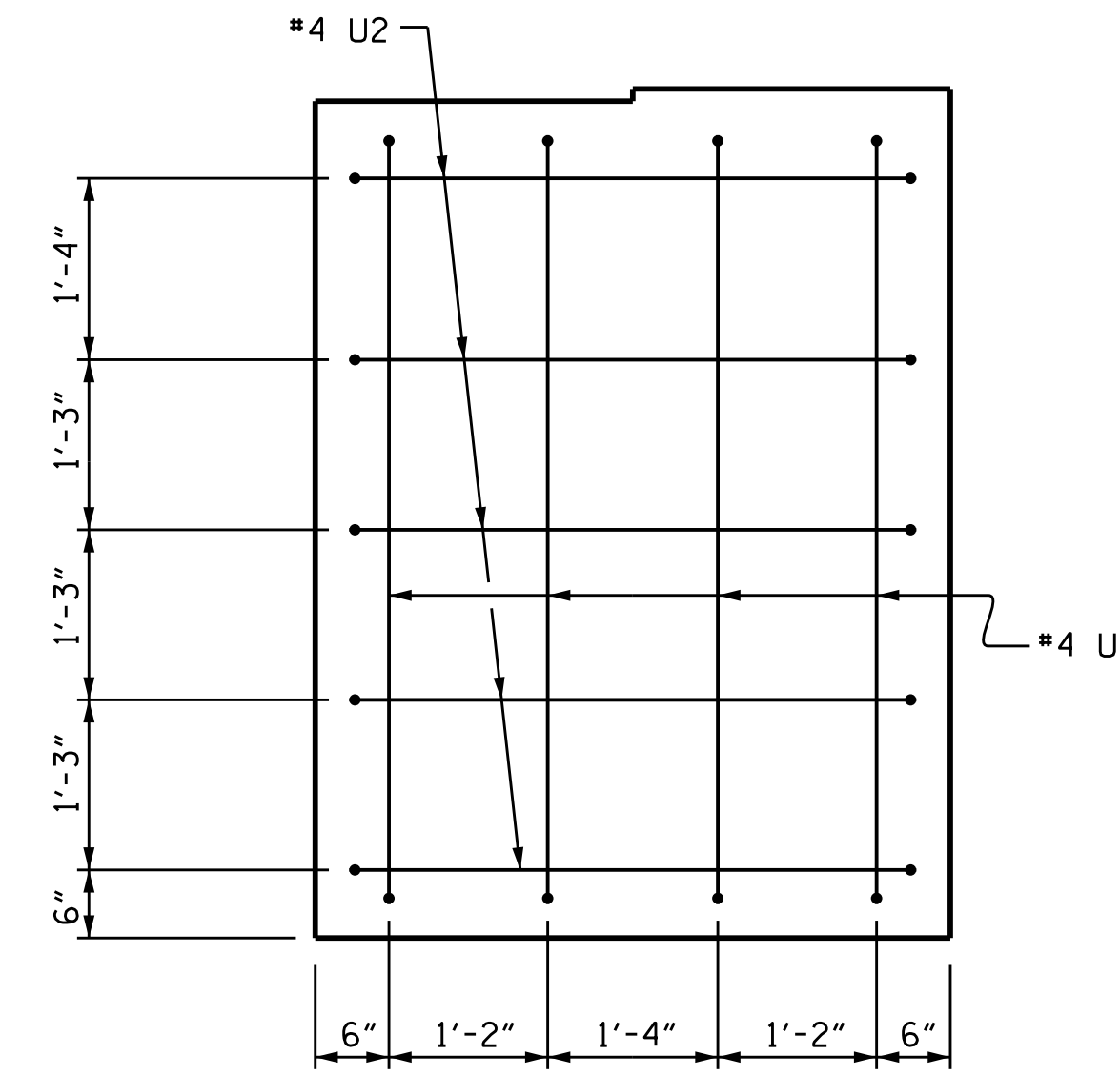
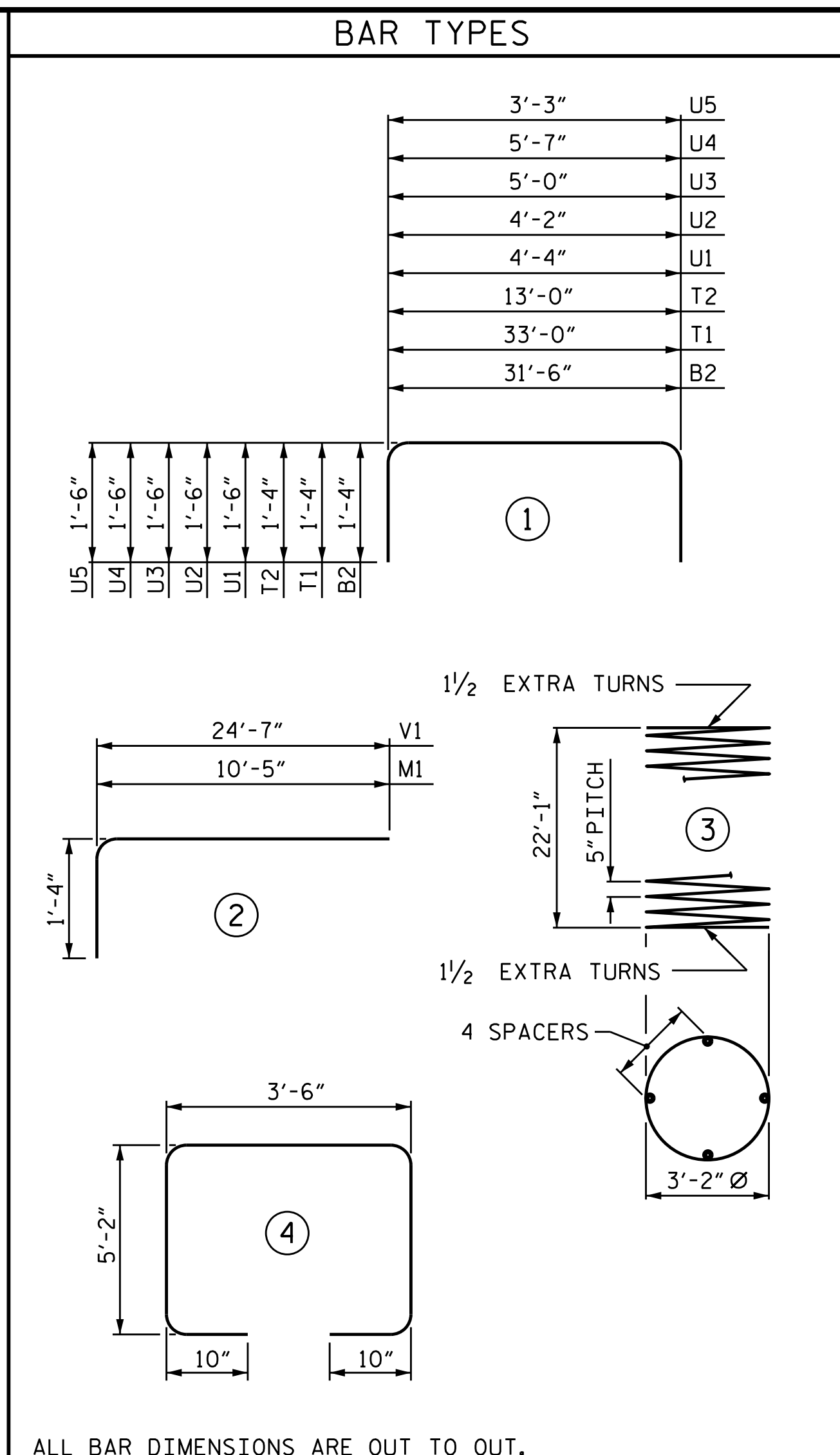


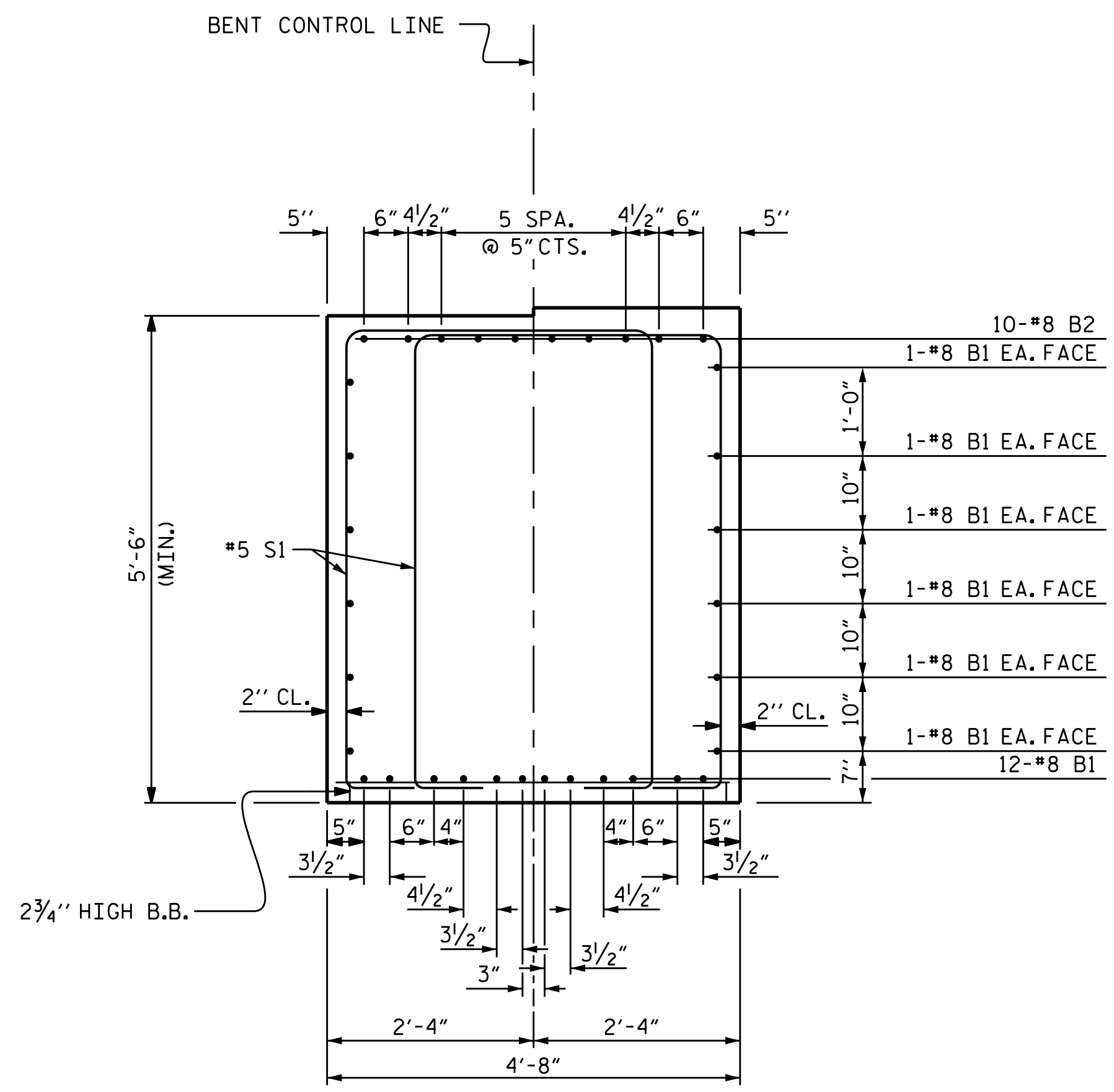
VIEW X-X



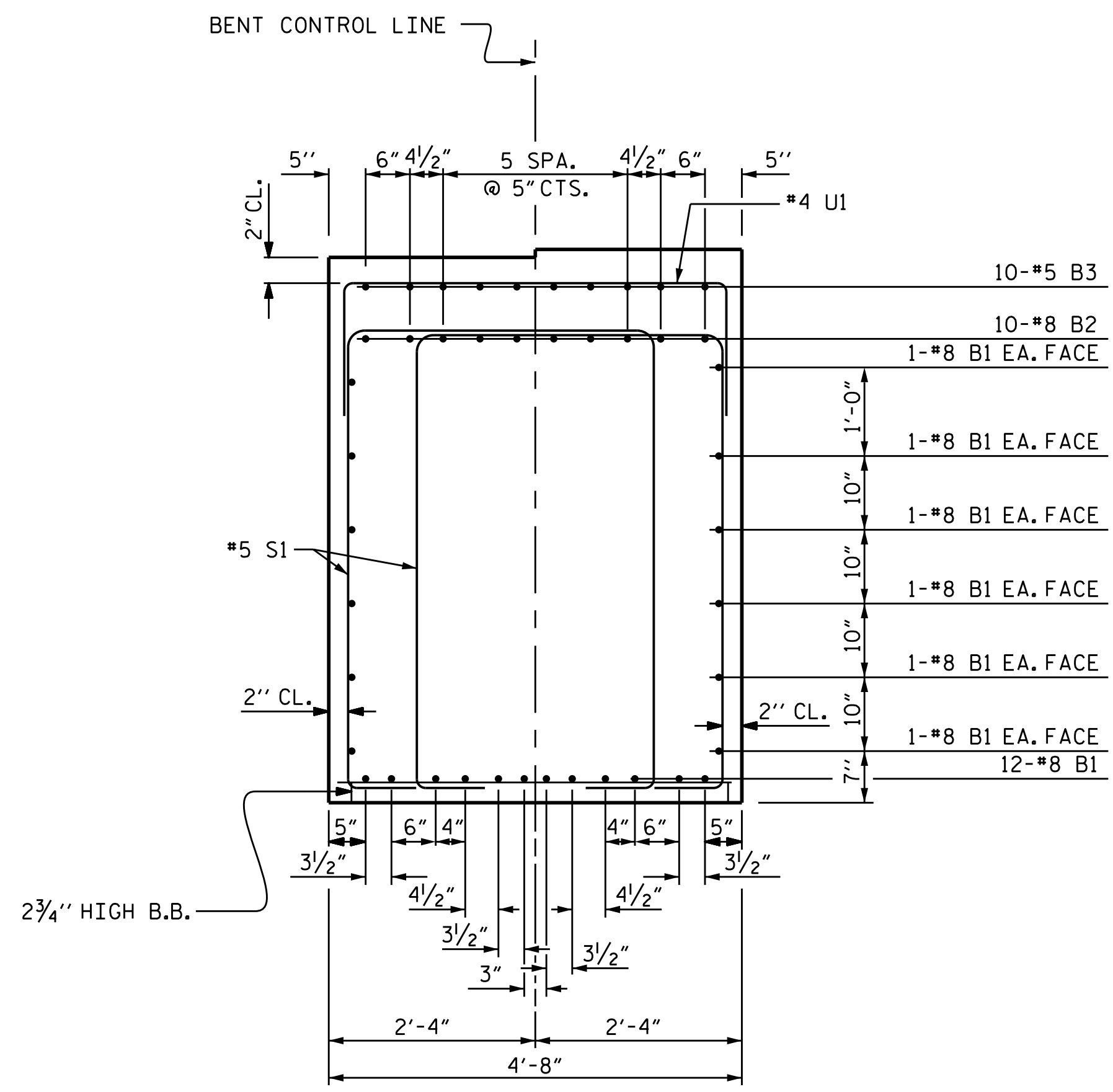
VIEW Y-Y



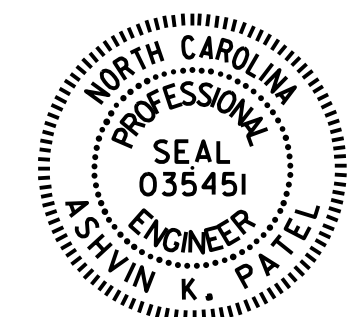
BILL OF MATERIAL					
BENT #4					
BAR	NO.	SIZE	TYPE	LENGTH	TOTAL LENGTH
B1	24	#8	STR	31'-8"	760'-0"
B2	10	#8		34'-2"	341'-8"
B3	10	#5	STR	8'-9"	87'-6"
B4	10	#5	STR	4'-9"	47'-6"
M1	54	#8	2	11'-9"	634'-6"
S1	84	#5	4	15'-6"	1302'-0"
T1	72	#8	1	35'-8"	2568'-0"
T2	48	#8	1	15'-8"	752'-0"
T3	102	#5	STR	13'-0"	1326'-0"
T4	6	#8	STR	33'-0"	198'-0"
T5	6	#8	STR	13'-0"	78'-0"
U1	35	#4	1	7'-4"	256'-8"
U2	9	#4	1	7'-2"	64'-6"
U3	4	#4	1	8'-0"	32'-0"
U4	4	#4	1	8'-7"	34'-4"
U5	54	#4	1	6'-3"	337'-6"
V1	54	#8	2	25'-11"	1399'-6"
SP-1	3	#5	3	549'-1"	1647'-3"
TOTAL LIN. FT. # 4 BARS					693.0
TOTAL LIN. FT. # 5 BARS					4442.2
TOTAL LIN. FT. # 8 BARS					6731.7
GLASS FIBER REINFORCED POLYMER BARS					11866.91 LIN. FT.
CLASS AA CONCRETE BREAKDOWN					
POUR #1 FOOTING					66.2 C.Y.
POUR #2 COLUMNS					23.4 C.Y.
POUR #3 CAP					32.2 C.Y.
TOTAL CLASS AA CONCRETE					121.8 C.Y.



SECTION A-A



SECTION B-B



Designed by:
Ashwin Patel
771806561024403
4/16/2021

PROJECT NO. B-4863
CARTERET COUNTY
STATION: 34+75.00 -L-

SHEET 3 OF 3

STATE OF NORTH CAROLINA
DEPARTMENT OF TRANSPORTATION
RALEIGH

SUBSTRUCTURE

BENT #4

DRAWN BY : I.L. AVERETTE DATE : 02/2019
CHECKED BY : A.K. PATEL DATE : 04/2019
DESIGN ENGINEER OF RECORD: A.K. PATEL DATE : 04/2019

DOCUMENT NOT CONSIDERED FINAL UNLESS ALL SIGNATURES COMPLETED

REVISIONS						SHEET NO.
NO.	BY:	DATE:	NO.	BY:	DATE:	S1-132
1			3			TOTAL SHEETS
2			4			194