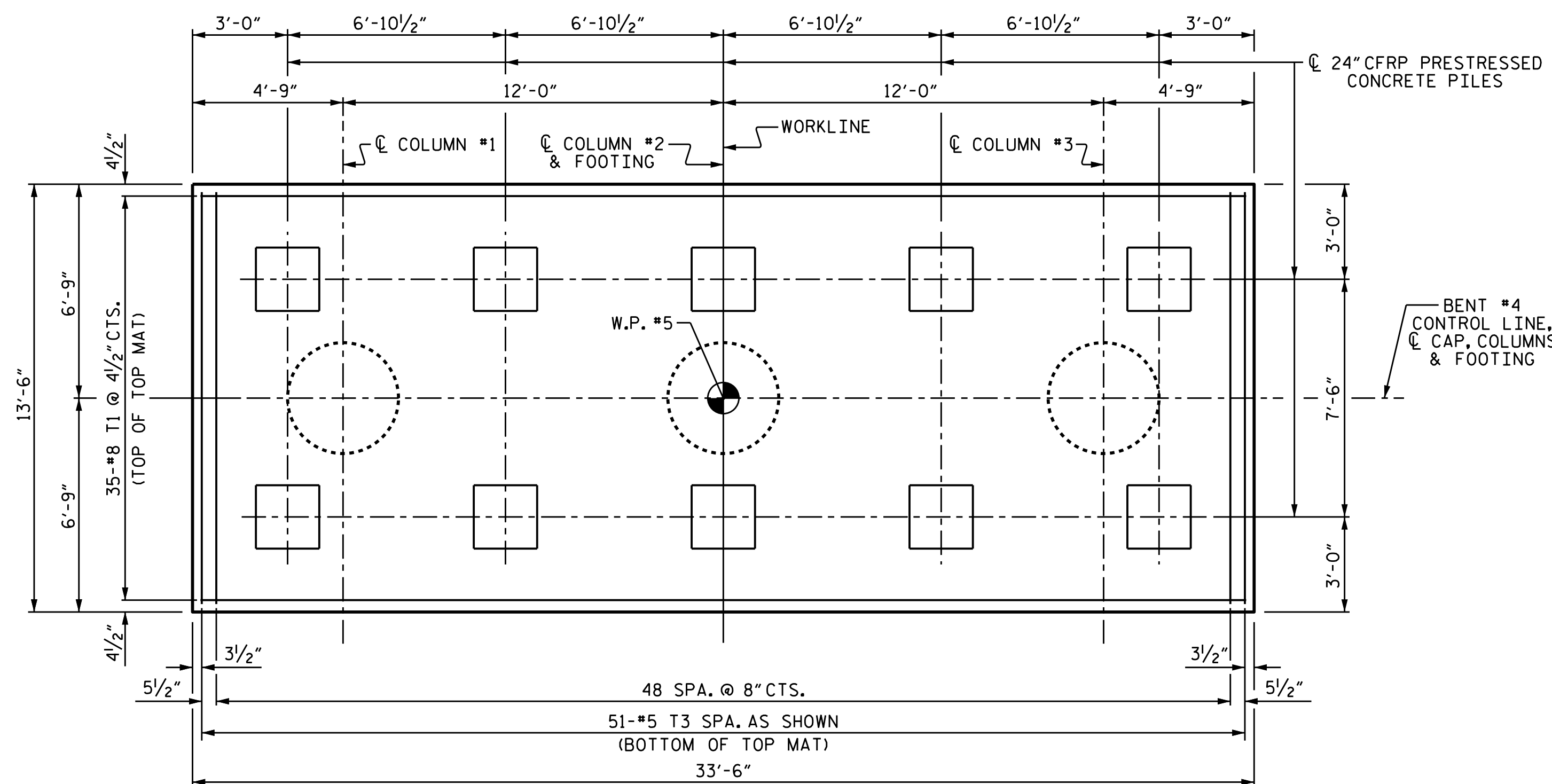


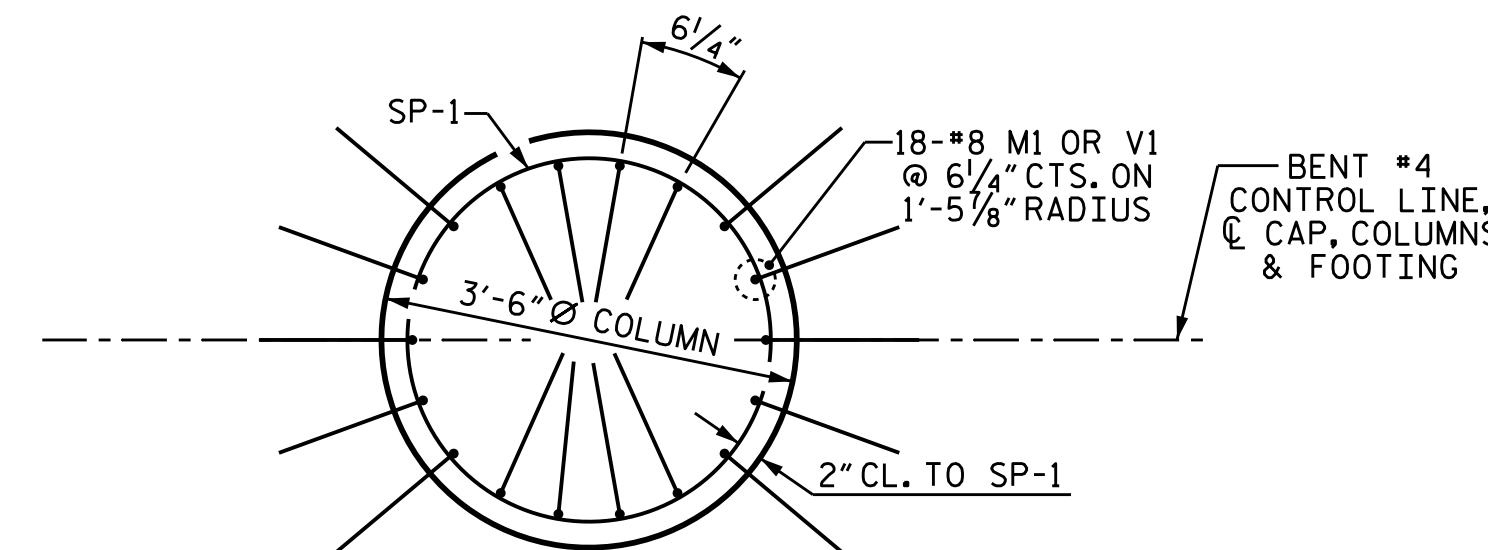
NOTES

FOR #8 T4 AND #8 T5 BARS ON EACH FACE OF FOOTING BETWEEN BOTTOM AND TOP MAT OF REINFORCING BARS, SEE SHEET 1 OF 3.

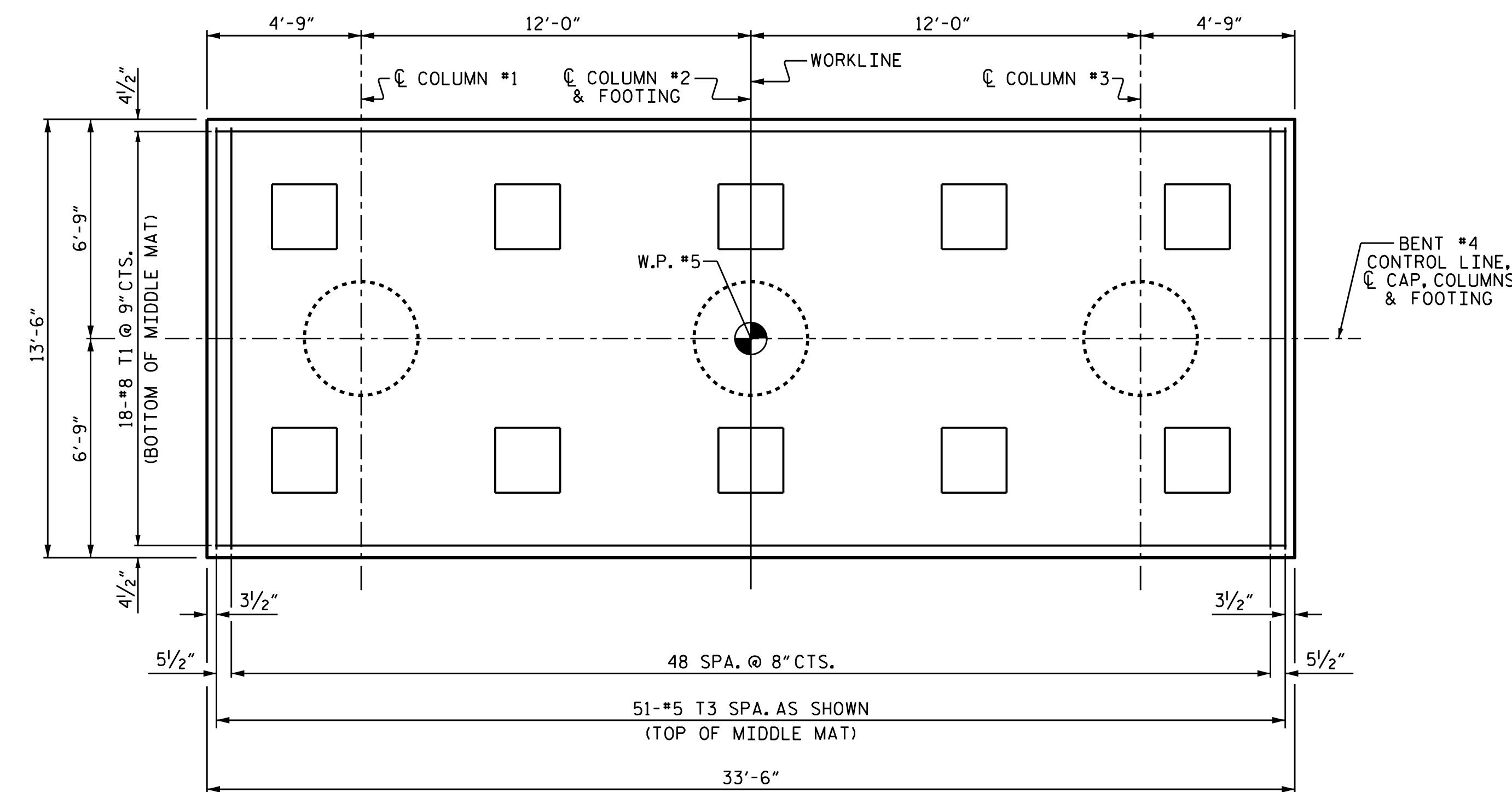
#4 U5 BARS MAY BE SHIFTED SLIGHTLY AS NECESSARY TO AVOID "T" BARS.



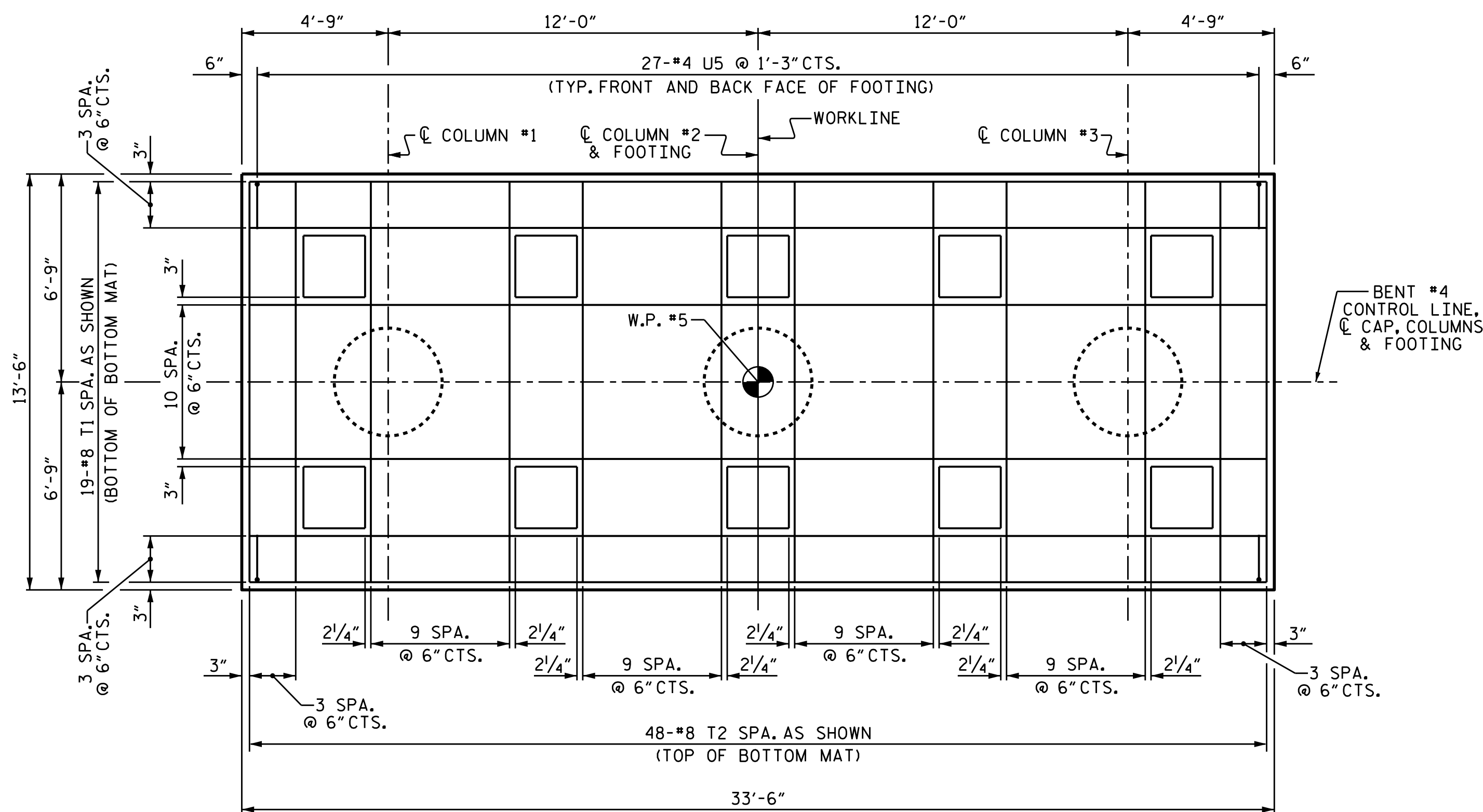
PLAN OF COLUMNS & FOOTING
SHOWING TOP MAT OF REINFORCING BARS



COLUMN REINFORCING DETAILS
TYPICAL FOR EACH COLUMN



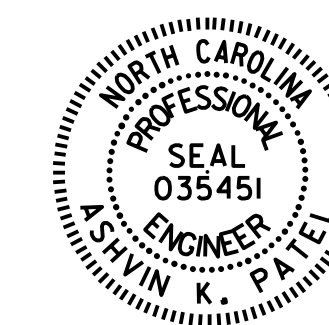
PLAN OF COLUMNS & FOOTING
SHOWING MIDDLE MAT OF REINFORCING BARS



PLAN OF COLUMNS & FOOTING
SHOWING BOTTOM MAT OF REINFORCING BARS
AND TEMPERATURE REINFORCEMENT

PROJECT NO. B-4863
CARTERET COUNTY
STATION: 34+75.00 -L-

SHEET 2 OF 3



DocuSigned by:
Ashwin Patel
7F189E5610244E33
3/9/2020

STATE OF NORTH CAROLINA
DEPARTMENT OF TRANSPORTATION
RALEIGH
SUBSTRUCTURE
BENT #4

DRAWN BY : T.L. AVERETTE DATE : 02/2019
CHECKED BY : A.K. PATEL DATE : 04/2019
DESIGN ENGINEER OF RECORD: A.K. PATEL DATE : 04/2019

DOCUMENT NOT CONSIDERED
FINAL UNLESS ALL
SIGNATURES COMPLETED

REVISIONS						SHEET NO.
NO.	BY:	DATE:	NO.	BY:	DATE:	TOTAL SHEETS
1			3			S1-131
2			4			194