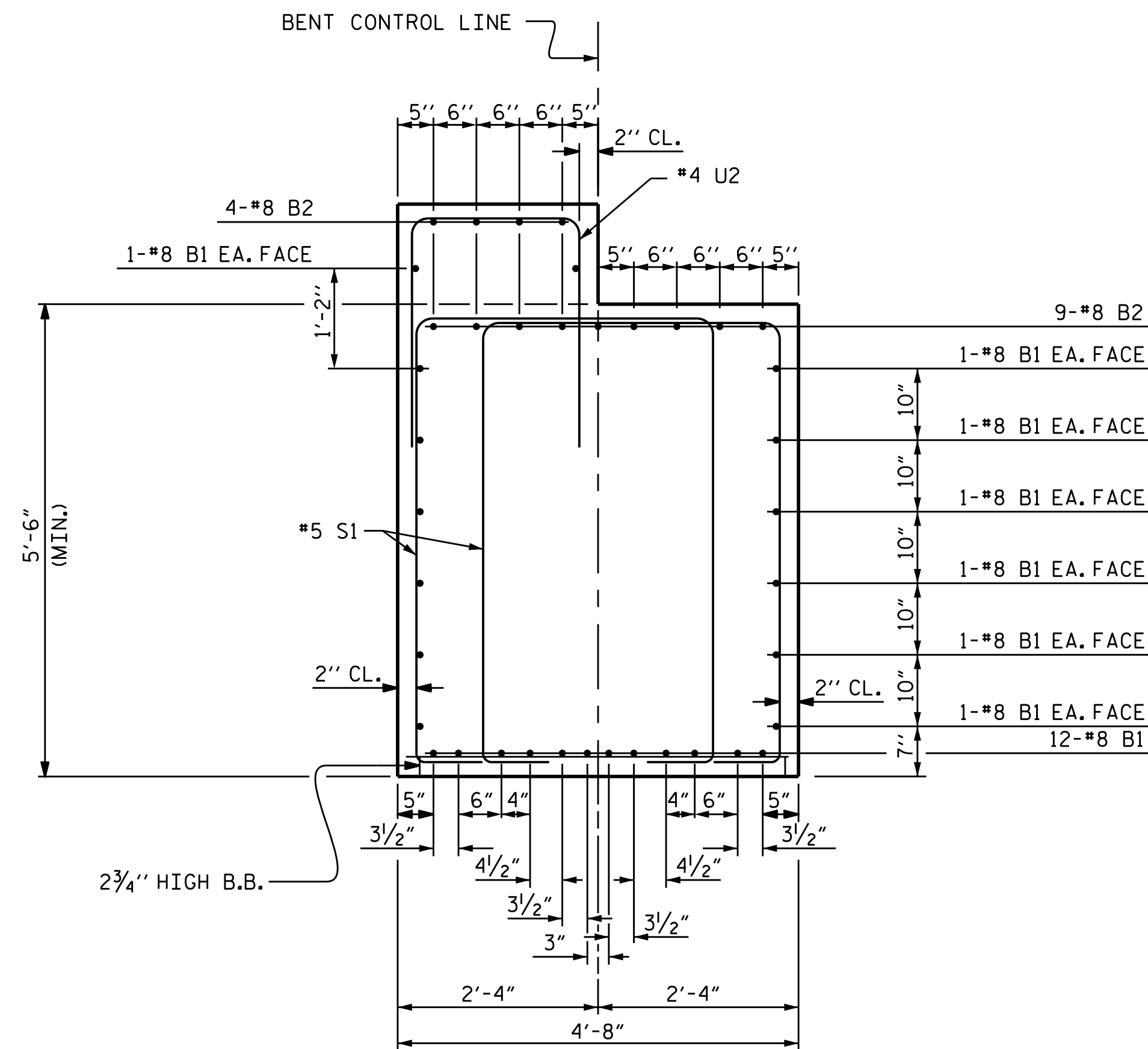
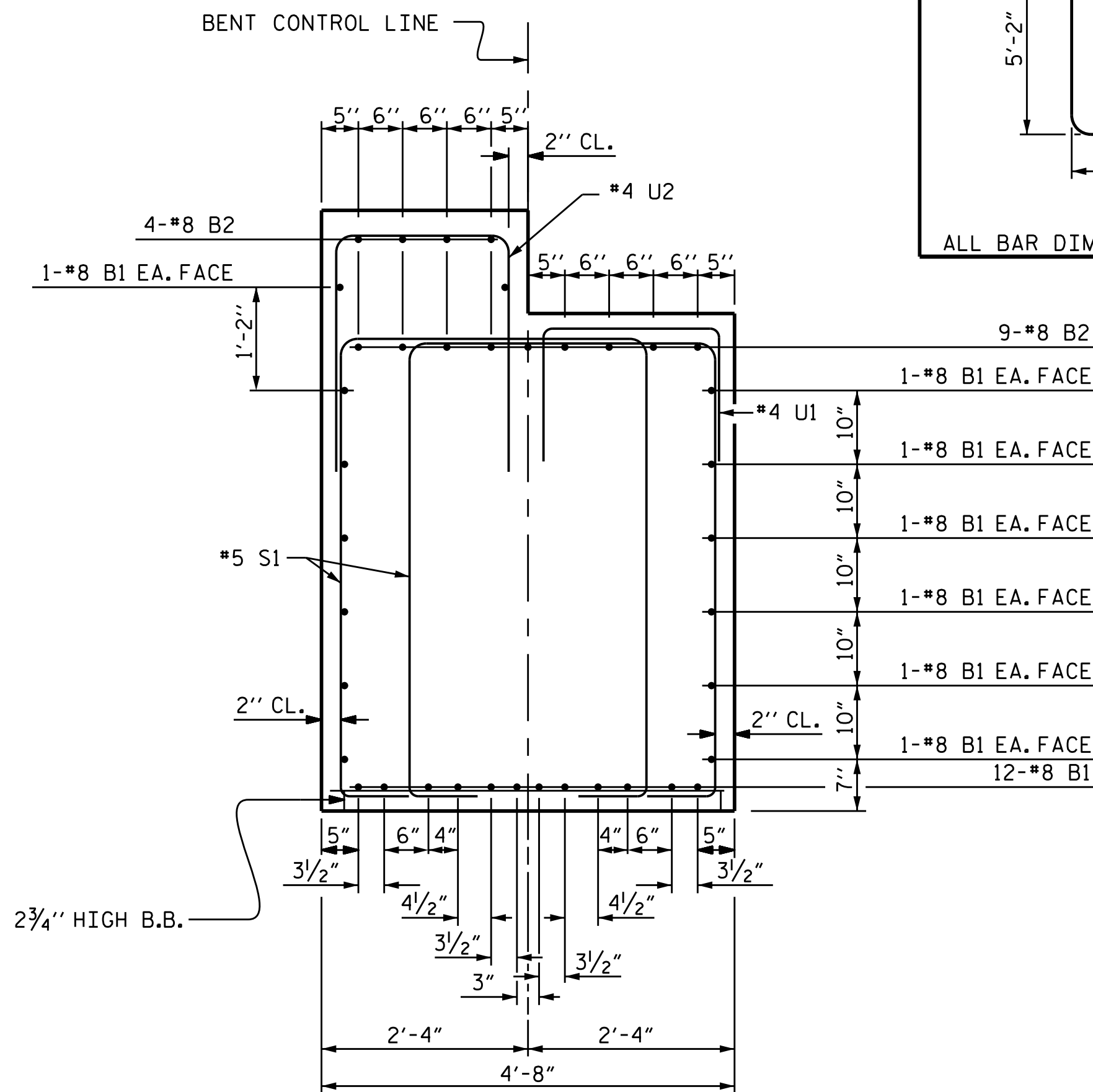


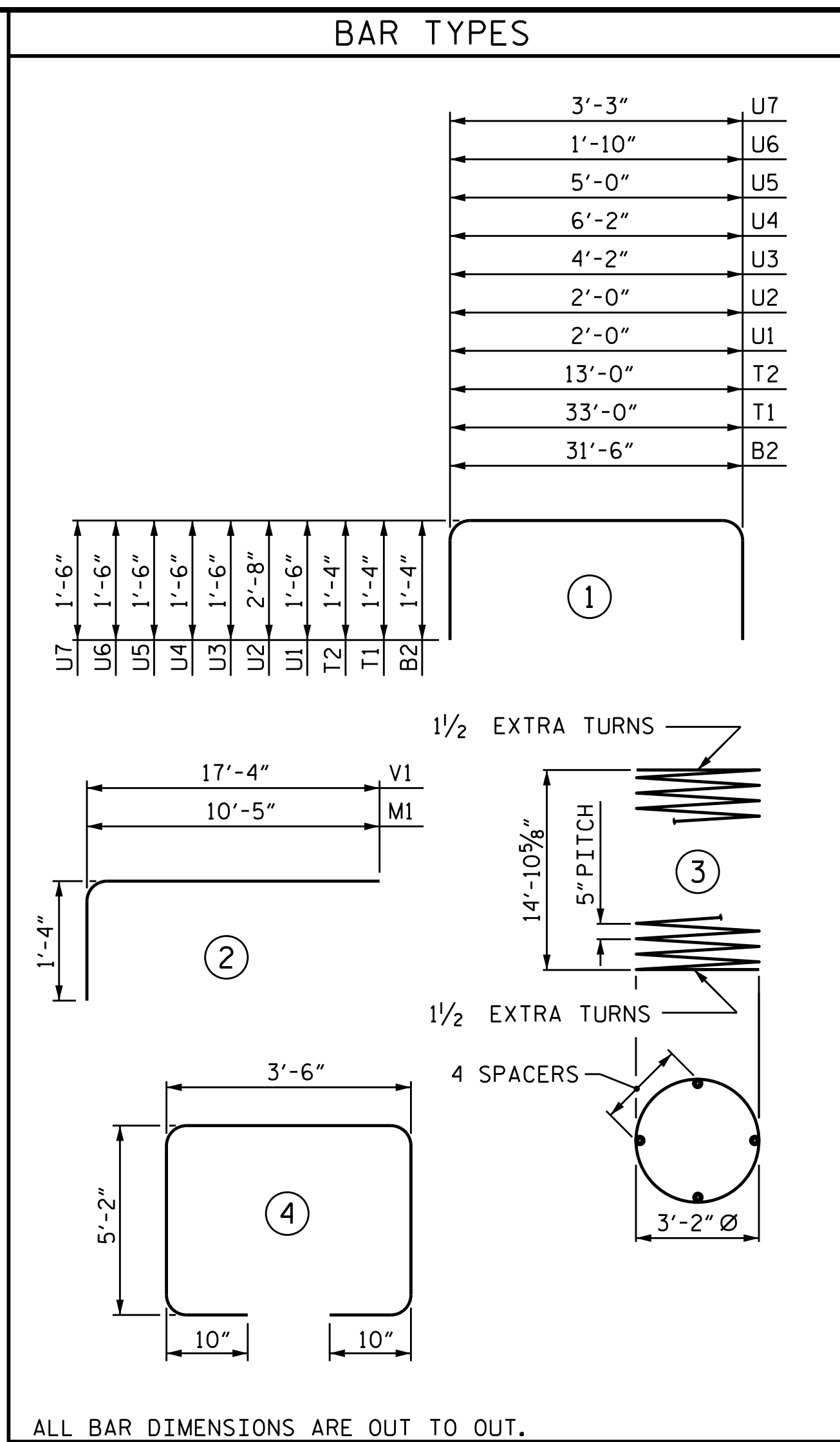
END VIEW
RIGHT END SHOWN, LEFT END SIMILAR



SECTION A-A



SECTION B-B



ALL BAR DIMENSIONS ARE OUT TO OUT.

BILL OF MATERIAL

BENT #3

BAR NO.	SIZE	TYPE	LENGTH	LENGTH	
B1	26	#8	STR	31'-8"	823'-4"
B2	13	#8	1	34'-2"	444'-2"
M1	54	#8	2	11'-9"	634'-6"
S1	76	#5	4	15'-6"	1178'-0"
T1	72	#8	1	35'-8"	2568'-0"
T2	48	#8	1	15'-8"	752'-0"
T3	102	#5	STR	13'-0"	1326'-0"
T4	6	#8	STR	33'-0"	198'-0"
T5	6	#8	STR	13'-0"	78'-0"
U1	32	#4	1	5'-0"	160'-0"
U2	41	#4	1	7'-4"	300'-8"
U3	8	#4	1	7'-2"	57'-4"
U4	4	#4	1	9'-2"	36'-8"
U5	4	#4	1	8'-0"	32'-0"
U6	2	#4	1	4'-10"	9'-8"
U7	54	#4	1	6'-3"	337'-6"
V1	54	#8	2	18'-8"	1008'-0"
SP-1	3	#5	3	379'-8"	1139'-0"

TOTAL LIN. FT. # 4 BARS	933.8
TOTAL LIN. FT. # 5 BARS	3643.0
TOTAL LIN. FT. # 8 BARS	6506.0

GLASS FIBER REINFORCED POLYMER BARS 11082.83 LIN. FT.

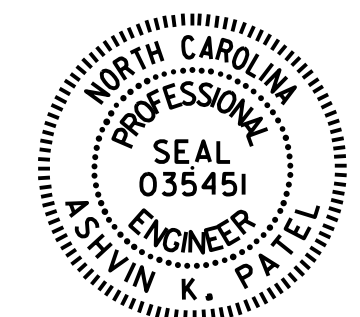
CLASS AA CONCRETE BREAKDOWN

POUR #1 FOOTING	66.2 C.Y.
POUR #2 COLUMNS	15.7 C.Y.
POUR #3 CAP	33.9 C.Y.
TOTAL CLASS AA CONCRETE	115.8 C.Y.

PROJECT NO. B-4863
CARTERET COUNTY
 STATION: 34+75.00 -L-

SHEET 3 OF 3

STATE OF NORTH CAROLINA
 DEPARTMENT OF TRANSPORTATION
 RALEIGH
 SUBSTRUCTURE
 BENT #3



Designed by:
 Ashwin Patel
 771806561024403
 4/16/2021

DOCUMENT NOT CONSIDERED FINAL UNLESS ALL SIGNATURES COMPLETED

REVISIONS						SHEET NO.
NO.	BY:	DATE:	NO.	BY:	DATE:	S1-129
1			3			TOTAL SHEETS
2			4			194

DRAWN BY : I.L. AVERETTE DATE : 02/2019
 CHECKED BY : A.K. PATEL DATE : 12/2019
 DESIGN ENGINEER OF RECORD: A.K. PATEL DATE : 12/2019