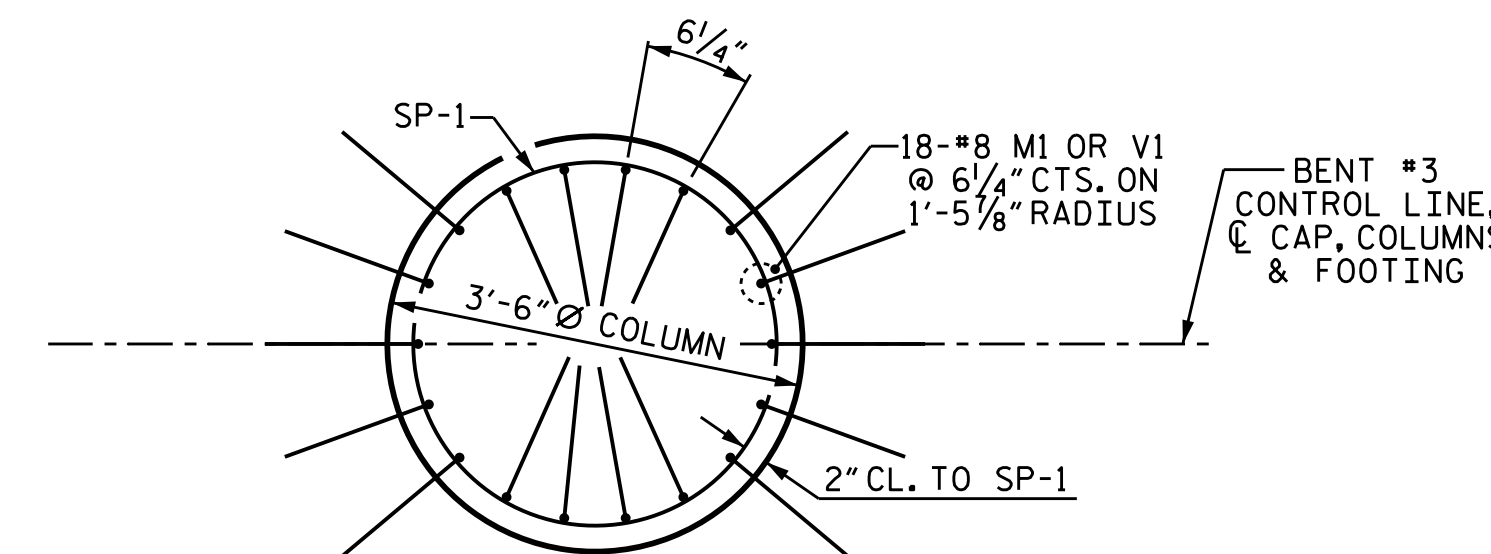


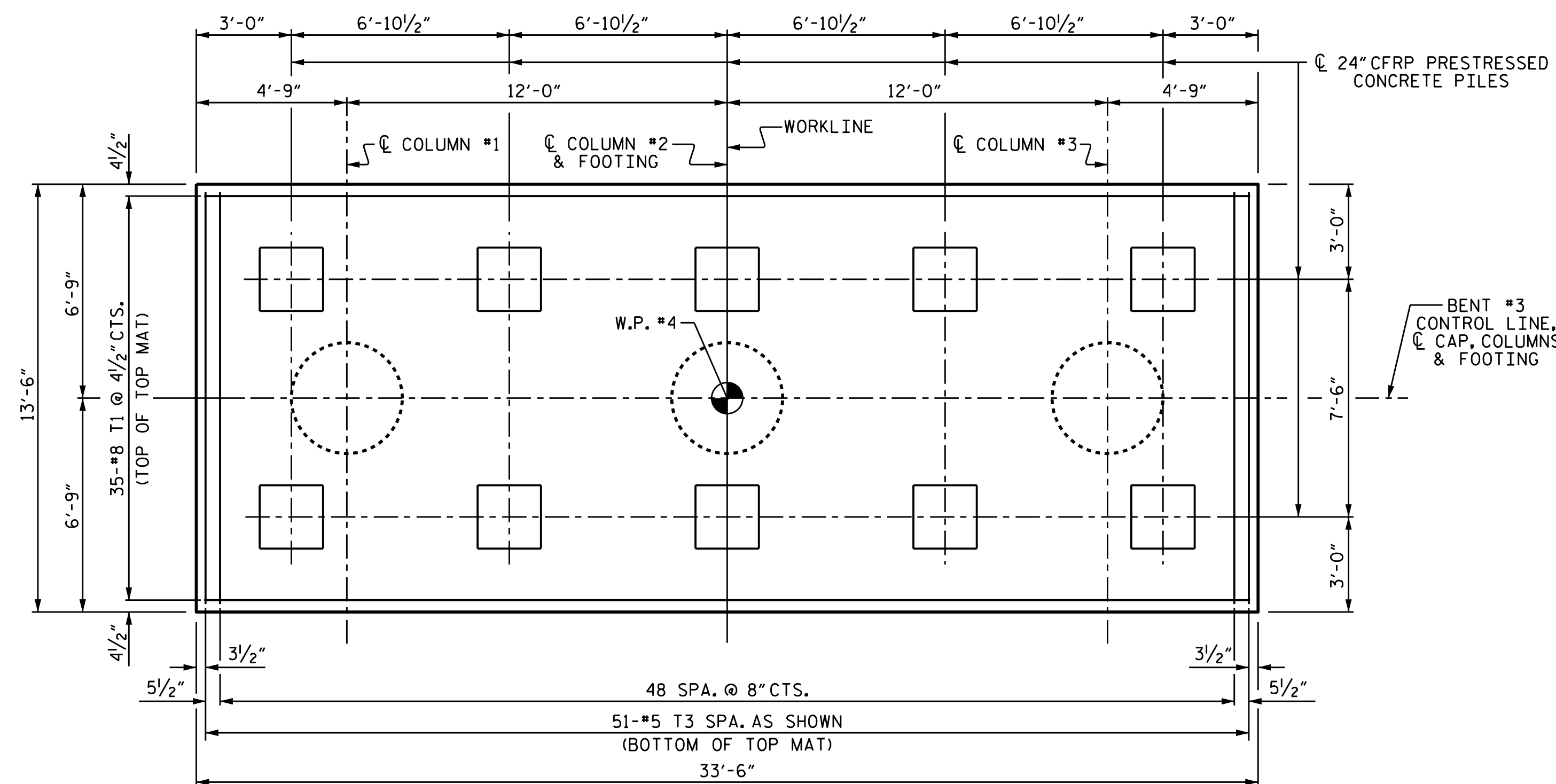
**NOTES**

FOR #8 T4 AND #8 T5 BARS ON EACH FACE OF FOOTING BETWEEN BOTTOM AND TOP MAT OF REINFORCING BARS, SEE SHEET 1 OF 3.

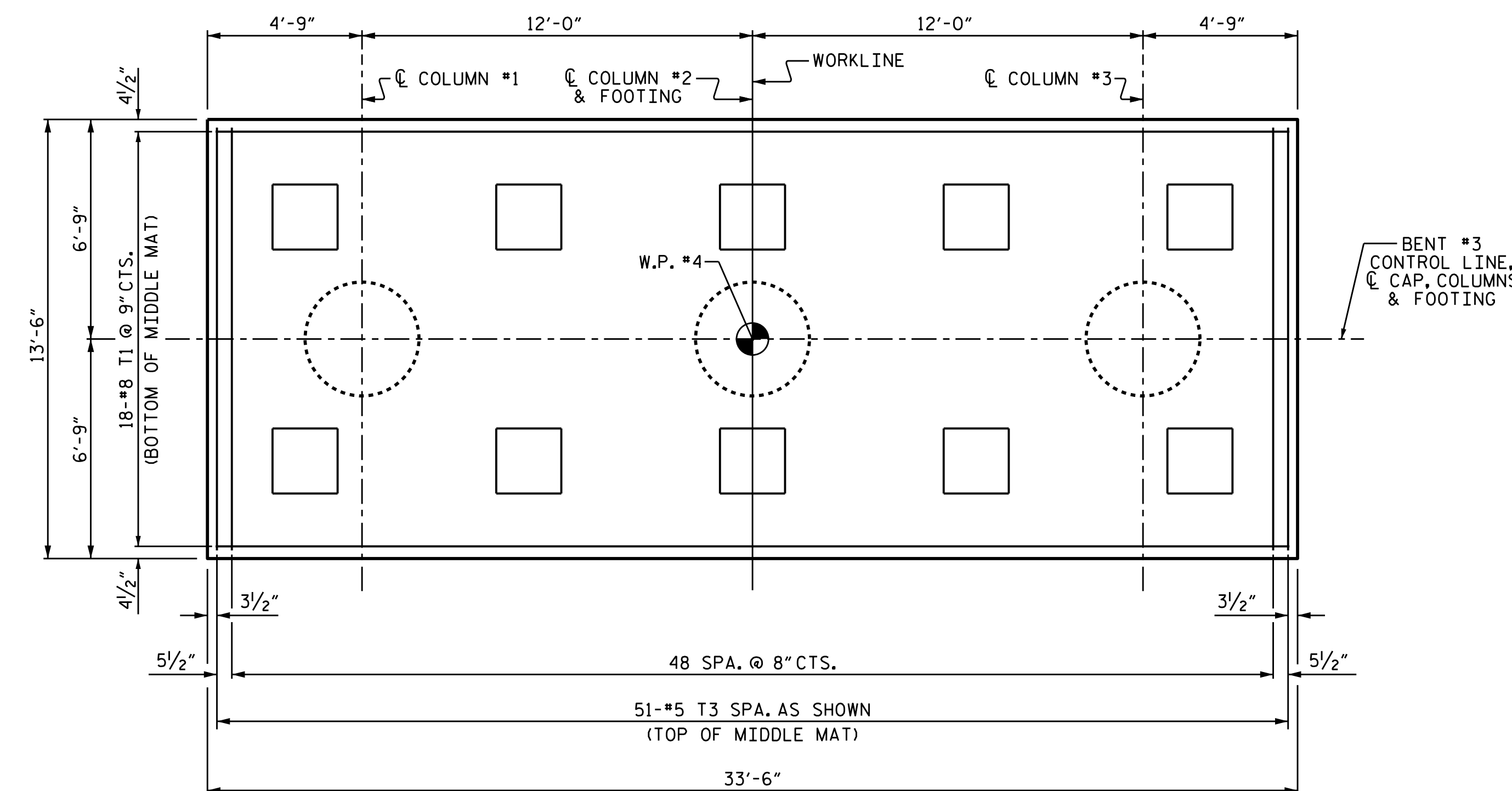
#4 U7 BARS MAY BE SHIFTED SLIGHTLY AS NECESSARY TO AVOID "T" BARS.



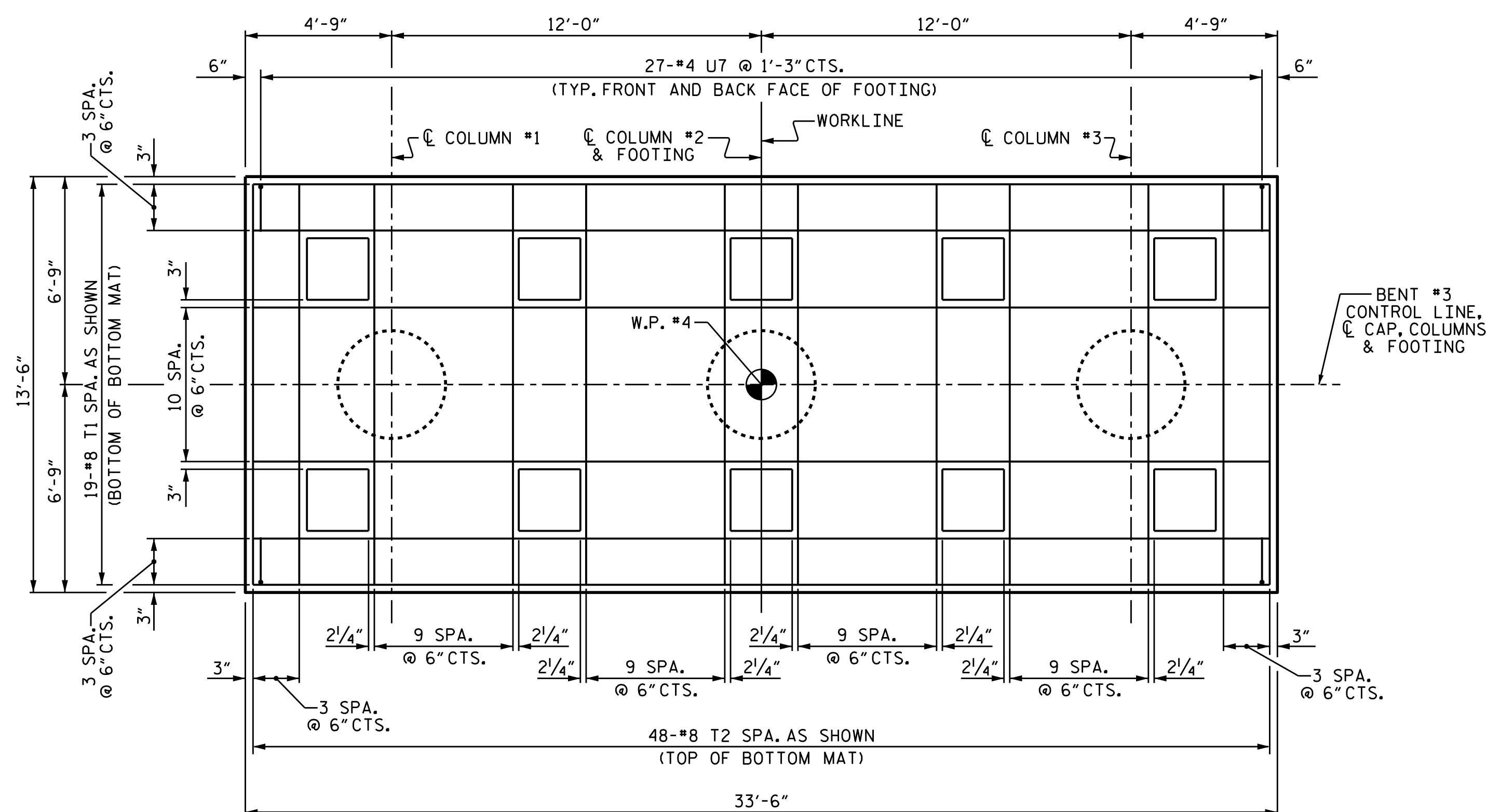
**COLUMN REINFORCING DETAILS**  
TYPICAL FOR EACH COLUMN



**PLAN OF COLUMNS & FOOTING**  
SHOWING TOP MAT OF REINFORCING BARS



**PLAN OF COLUMNS & FOOTING**  
SHOWING MIDDLE MAT OF REINFORCING BARS



**PLAN OF COLUMNS & FOOTING**  
SHOWING BOTTOM MAT OF REINFORCING BARS  
AND TEMPERATURE REINFORCEMENT

PROJECT NO. B-4863  
CARTERET COUNTY  
STATION: 34+75.00 -L-

SHEET 2 OF 3



DocuSigned by:  
Ashwin Patel  
7F1865E100403  
3/9/2020

STATE OF NORTH CAROLINA  
DEPARTMENT OF TRANSPORTATION  
RALEIGH

SUBSTRUCTURE

BENT #3

DRAWN BY : I.L. AVERETTE DATE : 02/2019  
CHECKED BY : A.K. PATEL DATE : 12/2019  
DESIGN ENGINEER OF RECORD: A.K. PATEL DATE : 12/2019

DOCUMENT NOT CONSIDERED  
FINAL UNLESS ALL  
SIGNATURES COMPLETED

REVISIONS						SHEET NO.
NO.	BY:	DATE:	NO.	BY:	DATE:	TOTAL SHEETS
1			3			S1-128
2			4			194