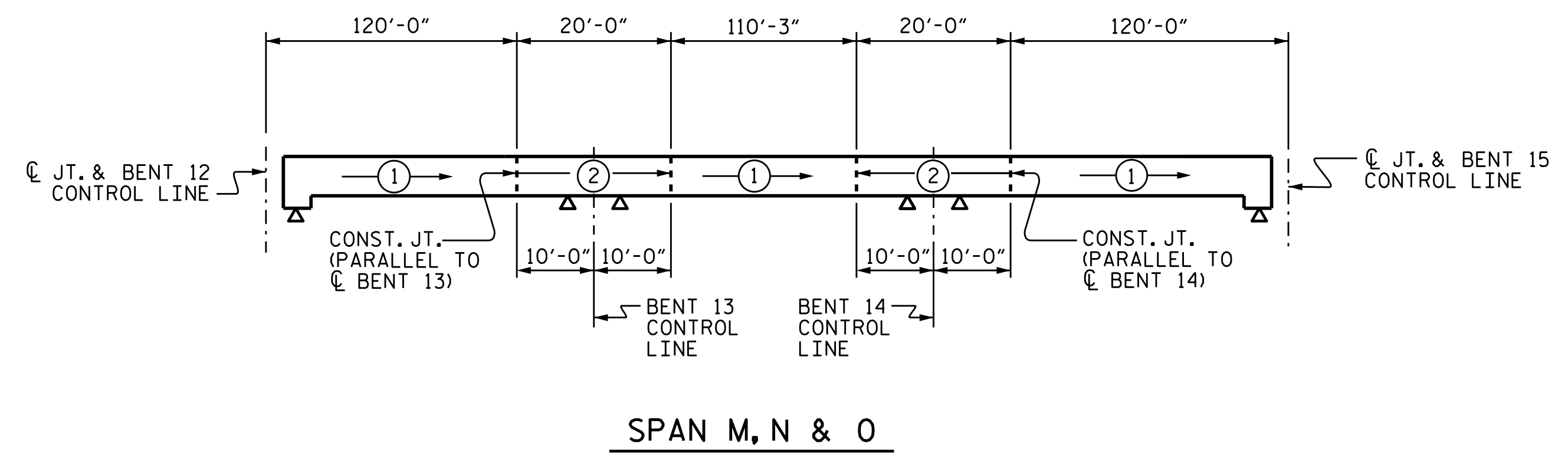
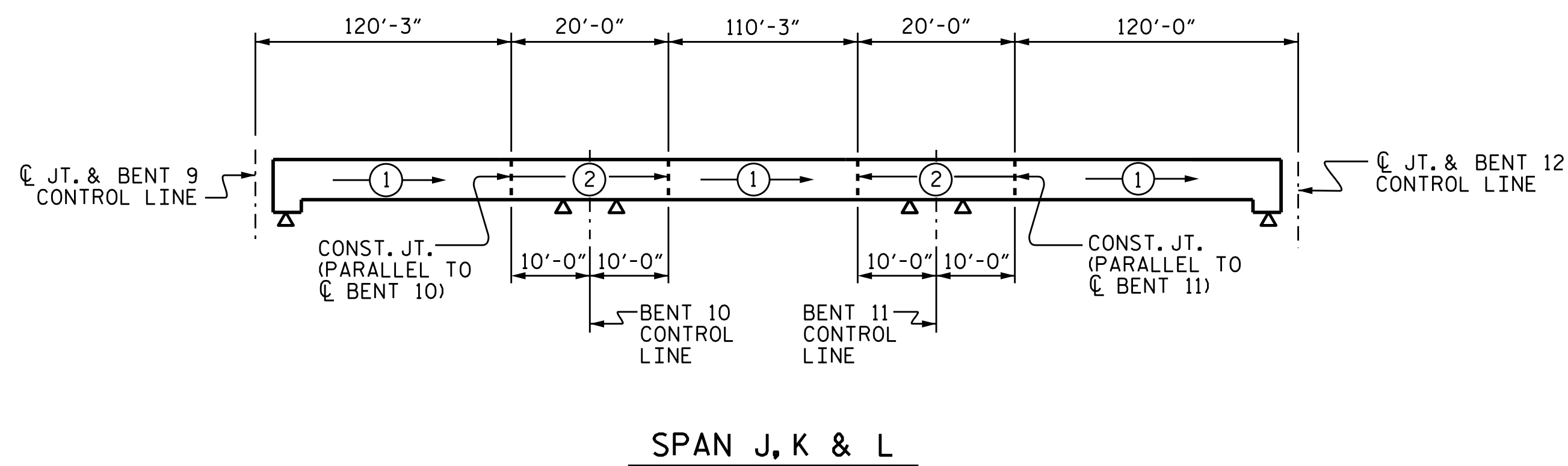


NOTE: GLASS FIBER REINFORCED POLYMER (GFRP) IN SLAB NOT SHOWN. LONGITUDINAL GLASS FIBER REINFORCED POLYMER (GFRP) SHALL BE CONTINUOUS THRU JOINT.



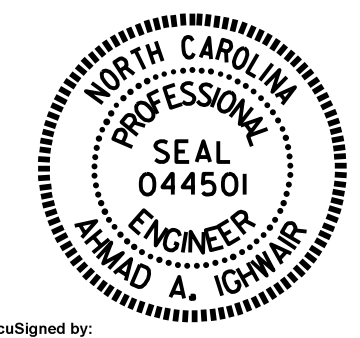
**POURING SEQUENCE**  
 POUR ② CANNOT BE STARTED UNTIL BOTH ADJACENT ① POURS REACH A MIN. OF 3000 PSI.

PROJECT NO. B-4863  
CARTERET COUNTY  
 STATION: 34+75.00 -L-

SHEET 1 OF 2

STATE OF NORTH CAROLINA  
 DEPARTMENT OF TRANSPORTATION  
 RALEIGH

**POURING SEQUENCE**



DocuSign by:  
 Ahmad Ighwair  
 486480440555489  
 4/16/2021

DRAWN BY : B. N. BARODAWALA DATE : 04-21  
 CHECKED BY : A. A. IGHWAIR DATE : 04-21  
 DESIGN ENGINEER OF RECORD: A. A. IGHWAIR DATE : 04-21

DOCUMENT NOT CONSIDERED  
 FINAL UNLESS ALL  
 SIGNATURES COMPLETED

REVISIONS						SHEET NO.
NO.	BY:	DATE:	NO.	BY:	DATE:	TOTAL SHEETS
1			3			194
2			4			