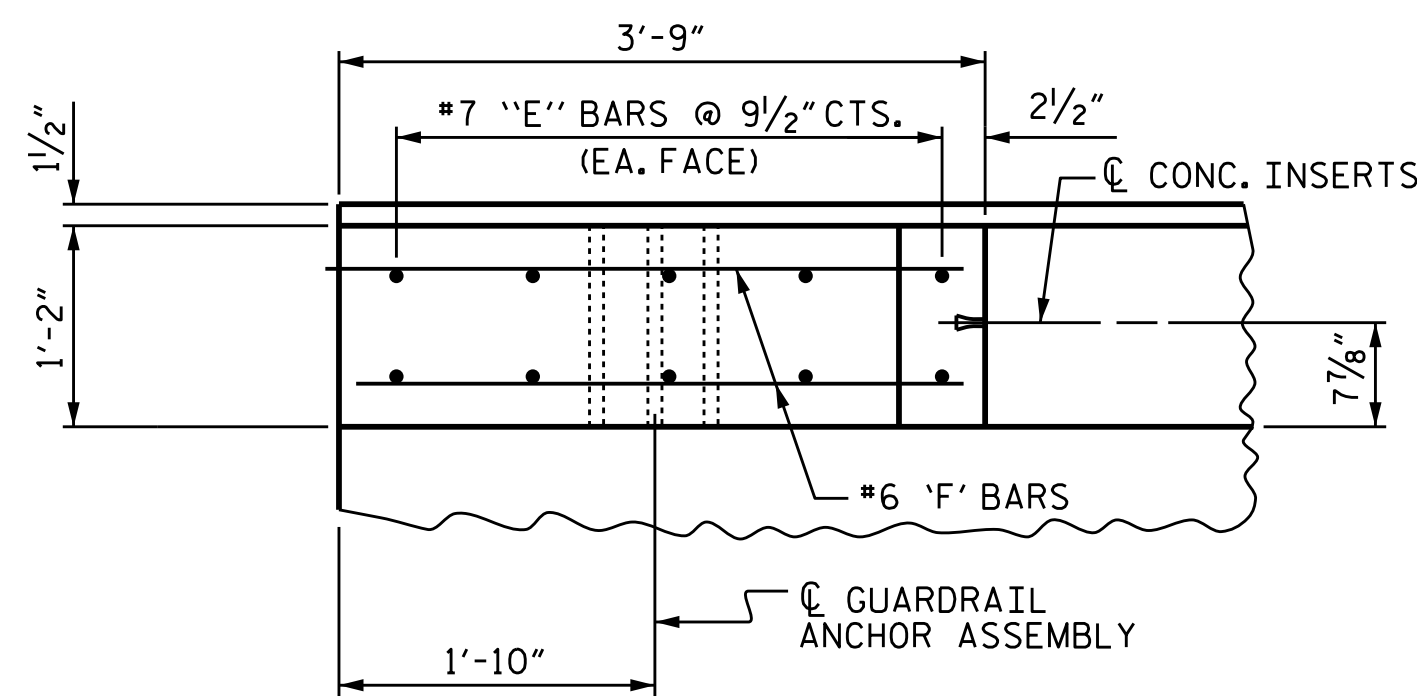
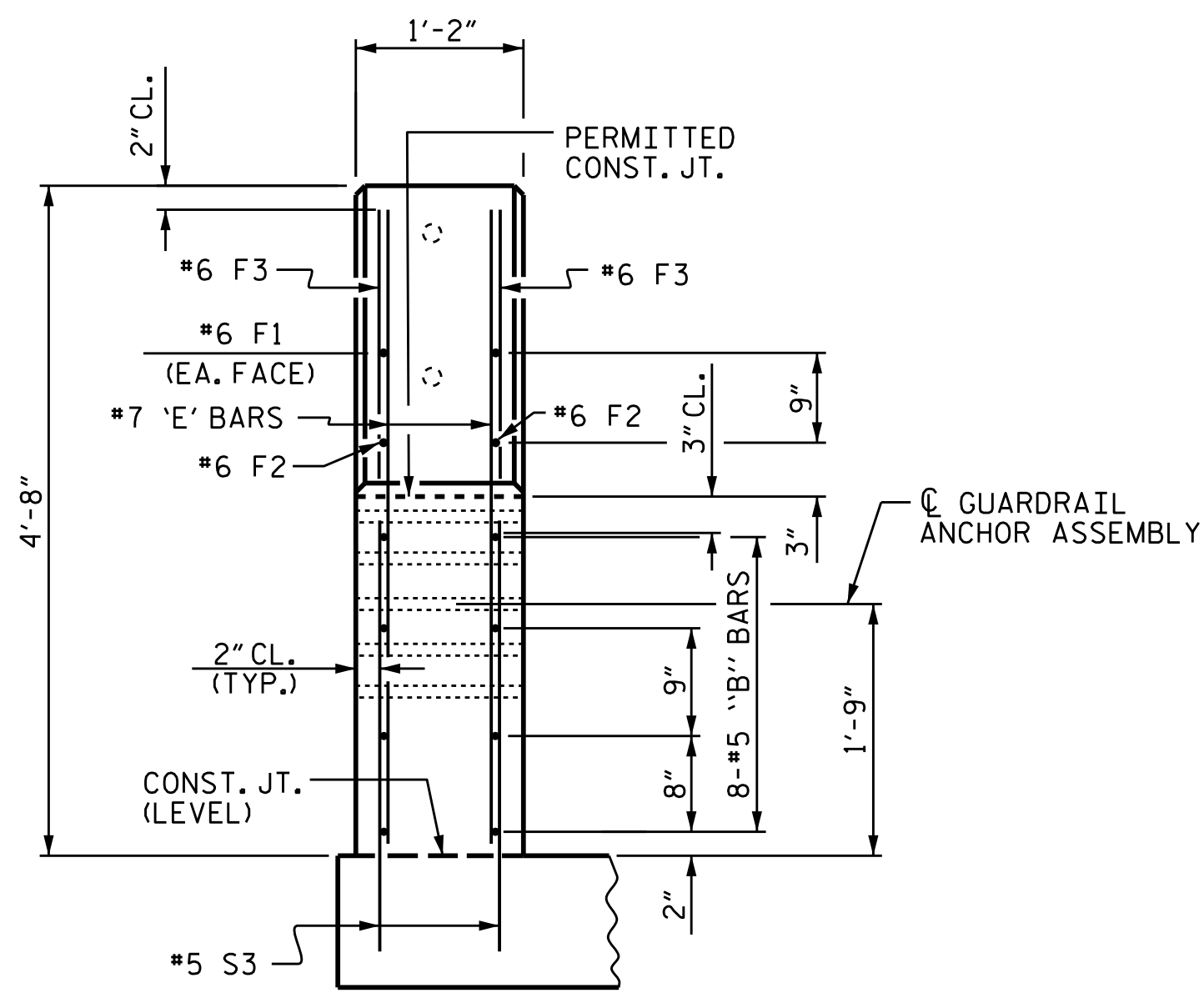


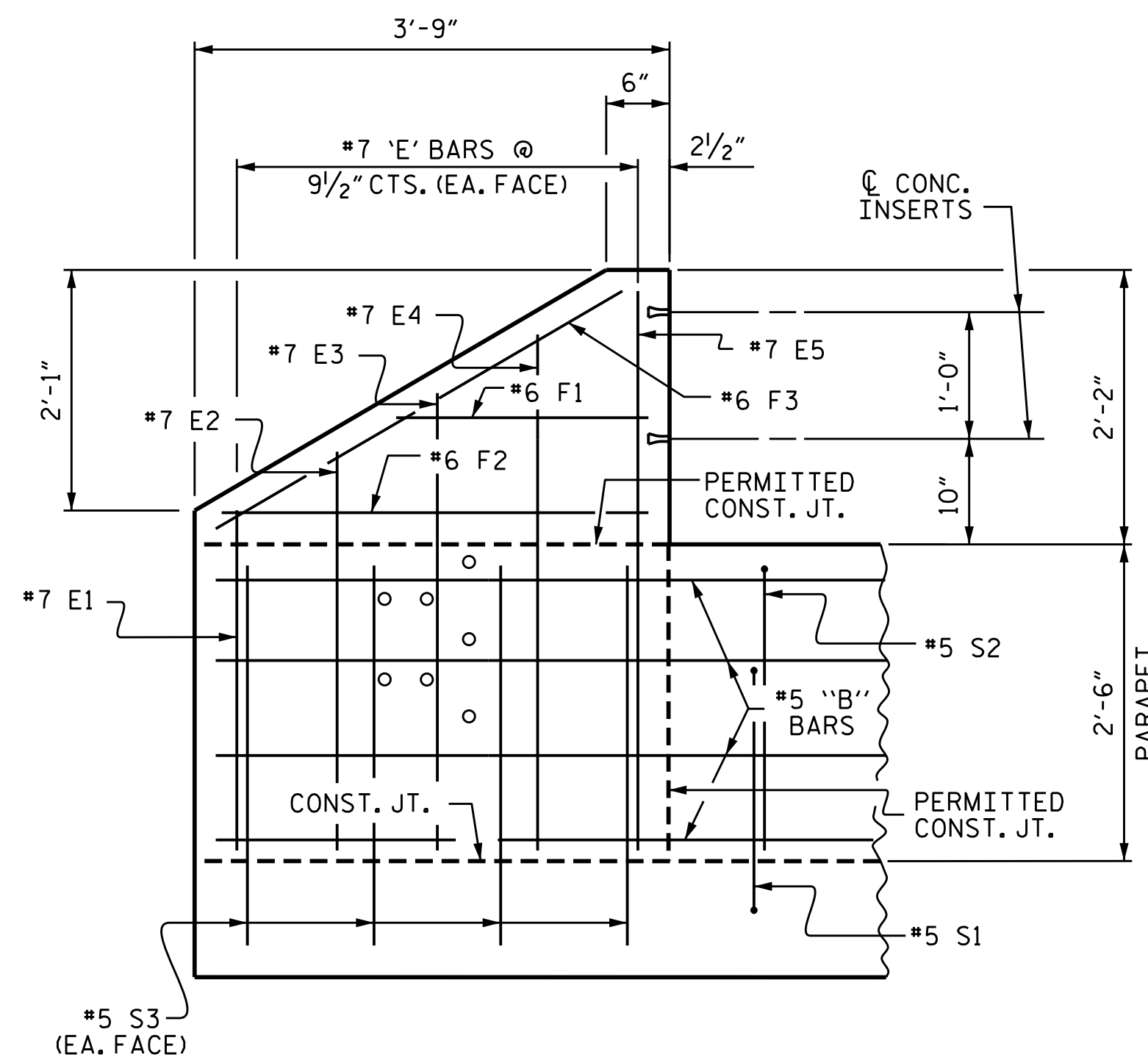
PLAN OF PARAPET



PLAN OF END POST



END VIEW



ELEVATION

PARAPET AND END POST FOR TWO BAR METAL RAIL

NOTES

THE PARAPET IN THE CONTINUOUS UNIT SHALL NOT BE CAST UNTIL ALL SLAB CONCRETE IN THE UNIT HAS BEEN CAST AND HAS REACHED A MINIMUM COMPRESSIVE STRENGTH OF 3,000 PSI.

ALL REINFORCING STEEL IN PARAPET AND END POSTS SHALL BE EPOXY COATED.

VERTICAL GROOVED CONTRACTION JOINTS, 1/2" IN DEPTH, SHALL BE TOOLED IN ALL EXPOSED FACES OF THE PARAPET AND IN ACCORDANCE WITH ARTICLE 825-10(B) OF THE STANDARD SPECIFICATIONS. THE CONTRACTION JOINT SHALL BE LOCATED AT EACH THIRD POINT BETWEEN PARAPET EXPANSION JOINTS. ONLY ONE CONTRACTION JOINT IS REQUIRED AT MIDPOINT OF PARAPET SEGMENTS LESS THAN 20 FEET IN LENGTH AND NO CONTRACTION JOINTS ARE REQUIRED FOR THOSE SEGMENTS LESS THAN 10 FEET IN LENGTH.

THE #5 S1 & #5 S2 BARS MAY BE SHIFTED SLIGHTLY IN ORDER TO MAINTAIN A 2" MINIMUM CLEARANCE TO THE 1/2" EXPANSION JOINT MATERIAL IN PARAPET.

FOR DETAILS OF CONCRETE INSERTS IN END POSTS, SEE "RAIL POST SPACINGS AND END OF RAIL DETAIL" SHEET.

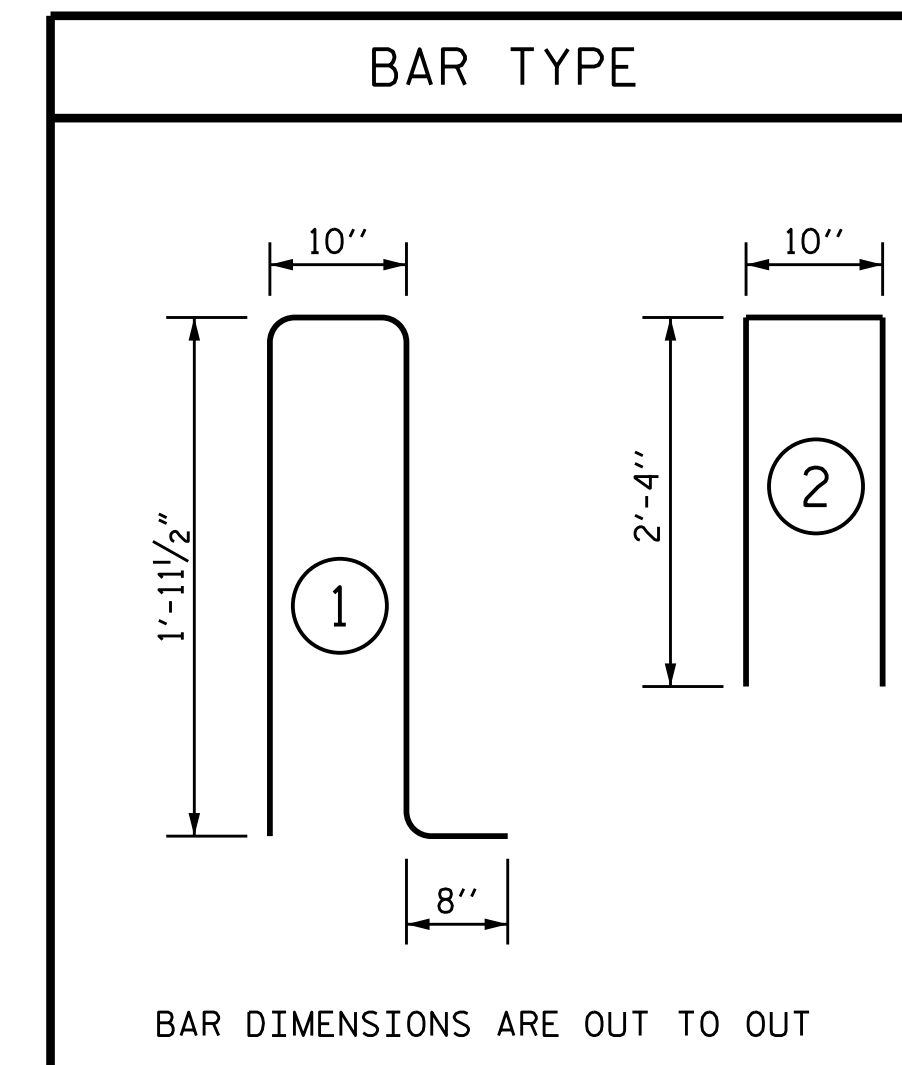
FOR DETAILS OF GUARDRAIL ANCHOR ASSEMBLIES, SEE "GUARDRAIL ANCHORAGE DETAILS FOR METAL RAIL" SHEET.

WHEN FOAM JOINT SEAL IS REQUIRED, THE JOINT IN THE DECK SHALL BE SAWED PRIOR TO THE CASTING OF PARAPET.

THE #5 S3 BARS SHALL BE INSTALLED, USING AN ADHESIVE ANCHORING SYSTEM, AFTER SAWING THE JOINT. THE YIELD LOAD FOR THE #5 S3 BARS IS 18.6 KIPS. FIELD TESTING FOR THE ADHESIVE BONDING SYSTEM IS NOT REQUIRED.

BILL OF MATERIAL

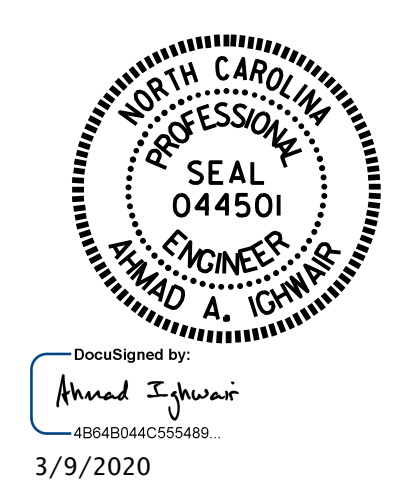
FOR CONCRETE PARAPET AND END POSTS					
BAR	NO.	SIZE	TYPE	LENGTH	WEIGHT
*B1	672	#5	STR	24'-10"	17406
*B2	704	#5	STR	25'-7"	18785
*B3	16	#5	STR	29'-1"	485
*B4	128	#5	STR	27'-7"	3682
*B5	24	#5	STR	23'-7"	590
*B6	192	#5	STR	13'-7"	2720
*B7	480	#5	STR	14'-5"	7218
*B8	192	#5	STR	15'-2"	3037
*B9	8	#5	STR	29'-0"	242
*B10	8	#5	STR	20'-10"	174
*E1	8	#7	STR	2'-6"	41
*E2	8	#7	STR	3'-0"	49
*E3	8	#7	STR	3'-6"	57
*E4	8	#7	STR	4'-0"	65
*E5	8	#7	STR	4'-4"	71
*F1	8	#6	STR	1'-10"	22
*F2	8	#6	STR	3'-0"	36
*F3	8	#6	STR	3'-7"	43
*S1	6290	#5	1	5'-5"	35536
*S2	6290	#5	2	5'-6"	36083
*S3	248	#5	STR	3'-0"	776
* EPOXY COATED REINFORCING STEEL				127,118	LBS.
CLASS AA CONCRETE				692.5	C.Y.
TOTAL LIN. FT. OF CONCRETE PARAPET				6396.69	L. F.



PARAPET REINFORCING STEEL	
BAR SIZE	SPLICE LENGTH
#5	3'-5"
#6	4'-4"

PROJECT NO. B-4863
CARTERET COUNTY
 STATION: 34+75.00 -L-

SHEET 14 OF 14



STATE OF NORTH CAROLINA
 DEPARTMENT OF TRANSPORTATION
 RALEIGH

SUPERSTRUCTURE
 CONCRETE PARAPET
 DETAILS

DRAWN BY :	B. N. BARODAWALA	DATE :	05-18
CHECKED BY :	M.A. ALLEN	DATE :	11-18
DESIGN ENGINEER OF RECORD:	A. A. IGHWAIR	DATE :	04-19

DOCUMENT NOT CONSIDERED FINAL UNLESS ALL SIGNATURES COMPLETED

REVISIONS						SHEET NO.
NO.	BY:	DATE:	NO.	BY:	DATE:	S1-114
1			3			TOTAL SHEETS
2			4			194