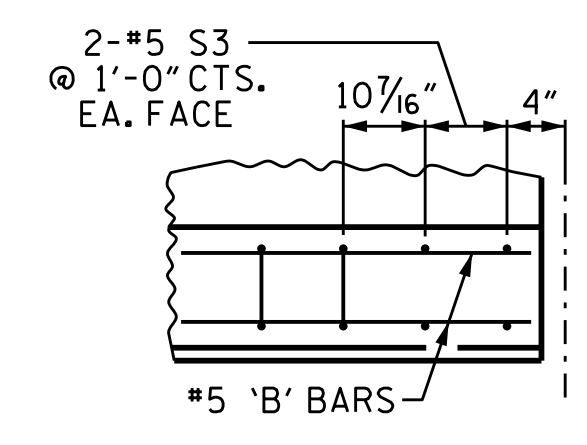


DETAIL 'C'

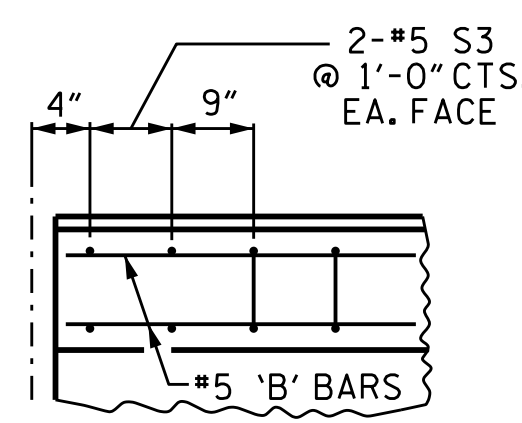


DETAIL 'D'

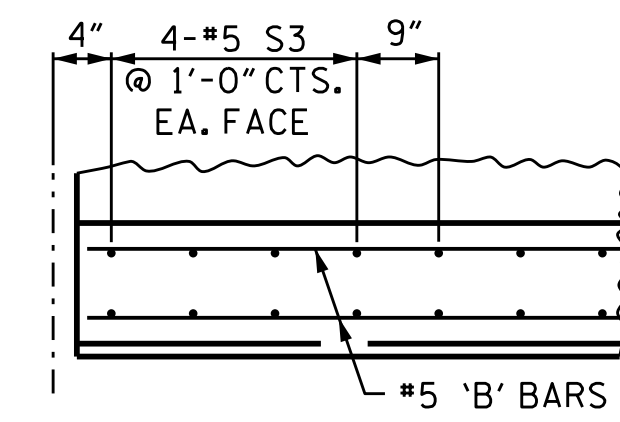
SPAN U, V AND W

PLAN OF PARAPET

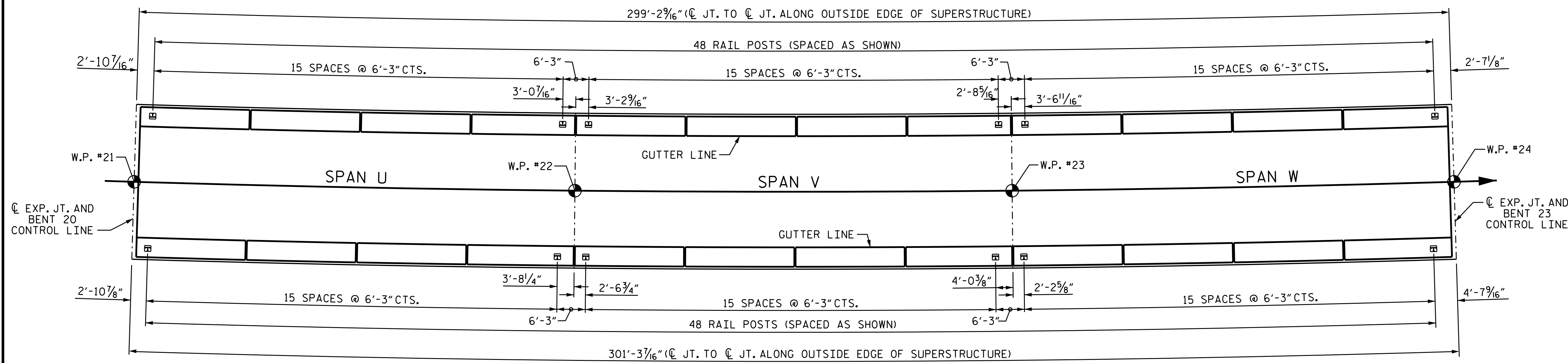
FOR DETAILS OF PARAPET, ENDPOSTS, AND ADDITIONAL REINFORCEMENT, SEE SHEET 14 OF 14. ALL DIMENSIONS ARE TAKEN ALONG THE ARC OF THE OUTSIDE EDGE OF SUPERSTRUCTURE



DETAIL 'A'



DETAIL 'B'



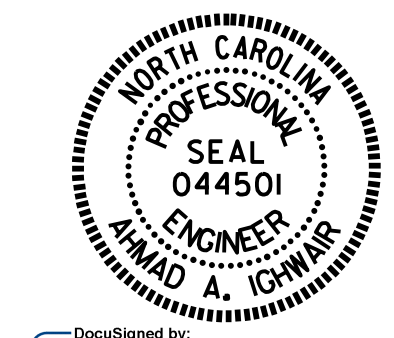
SPAN U, V AND W

PLAN OF RAIL POST SPACINGS

ALL DIMENSIONS ARE TAKEN ALONG THE ARC OF THE OUTSIDE EDGE OF SUPERSTRUCTURE

PROJECT NO. B-4863
 CARTERET COUNTY
 STATION: 34+75.00 -L-

SHEET 8 OF 14



Documented by:
 Ahmad Ighwair
 48948044C555489
 3/9/2020

STATE OF NORTH CAROLINA
 DEPARTMENT OF TRANSPORTATION
 RALEIGH
 CONCRETE PARAPET
 DETAILS AND
 2 BAR METAL RAIL
 POST SPACING

DRAWN BY : B. N. BARODAWALA DATE : 05-18
 CHECKED BY : M.A. ALLEN DATE : 11-18
 DESIGN ENGINEER OF RECORD : A. A. IGHWAIR DATE : 04-19

DOCUMENT NOT CONSIDERED
 FINAL UNLESS ALL
 SIGNATURES COMPLETED

REVISIONS						SHEET NO.	
NO.	BY:	DATE:	NO.	BY:	DATE:	S1-108	
1			3			TOTAL SHEETS	194
2			4				