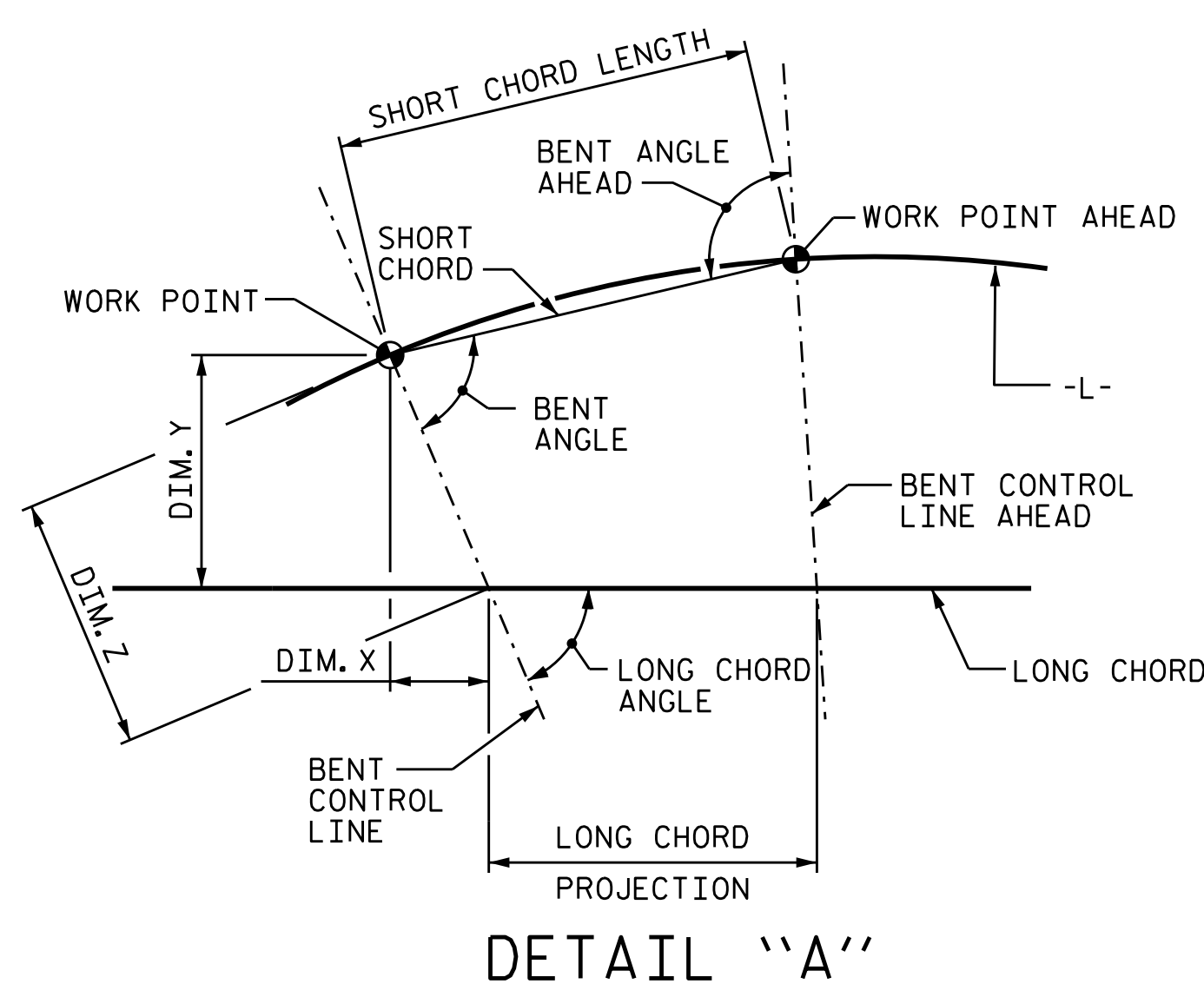


LONG CHORD 3 LAYOUT
(FROM STATION 47+73.75 -L- TO 50+75.00 -L-)

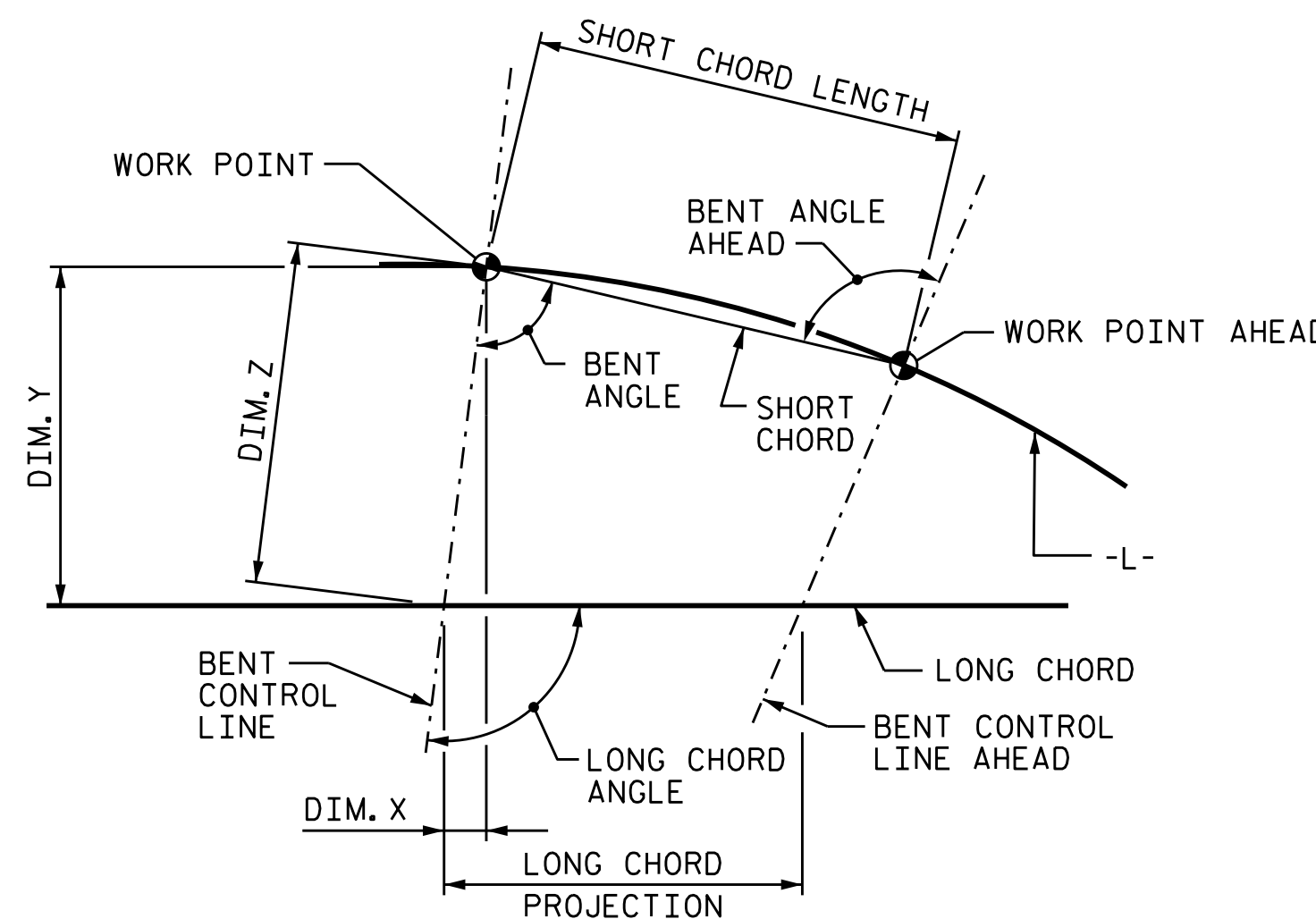
HORIZ. CURVE DATA -L-	
PI STA.	= 51+04.28
Δ	= 14°-20'-50.1" (RT)
D	= 2°-23'-14.4"
L	= 660.98'
T	= 302.07'
R	= 2,400.00'

LONG CHORD ANGLES & DIMENSIONS

LONG CHORD 3	WORK POINT NUMBER	26	27	28	29
	BENT NUMBER	BENT 25	BENT 26	BENT 27	END BENT 2
W.P. STATION -L-	47+73.75	48+74.00	49+74.25	50+75.00	
LONG CHORD ANGLE	87°-03'-05"	88°-45'-55"	91°-09'-31"	93°-33'-50"	
BENT ANGLE	89°-23'-11"	88°-48'-12"	88°-47'-51"	-	
BENT ANGLE AHEAD	91°-06'-01"	91°-11'-48"	91°-12'-09"	-	
LONG CHORD PROJECTION (FT)	100.250	100.071	100.741	-	
SHORT CHORD LENGTH (FT)	100.245	100.243	100.743	-	
DIMENSION X (FT)	0.000	0.088	0.084	0.000	
DIMENSION Y (FT)	0.000	4.084	4.151	0.000	
DIMENSION Z (FT)	0.000	4.085	4.151	0.000	



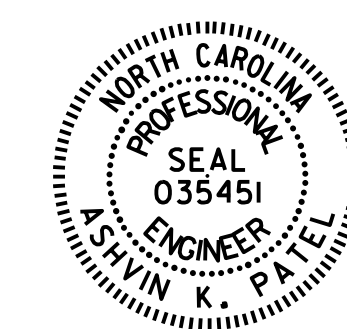
DETAIL "A"



DETAIL "B"

PROJECT NO. B-4863
CARTERET COUNTY
 STATION: 34+75.00 -L-

SHEET 14 OF 16



DocuSigned by:
 Ashwin Patel
 7F180E56102403
 3/9/2020

STATE OF NORTH CAROLINA
 DEPARTMENT OF TRANSPORTATION
 RALEIGH
GENERAL DRAWING
 FOR BRIDGE OVER
 'THE STRAITS'
 ON SR 1335 BETWEEN
 US 70 AND SR 1337

DRAWN BY : M.A. ALLEN DATE : 7/18
 CHECKED BY : T.H. CARROLL DATE : 10/19
 DESIGN ENGINEER OF RECORD: A.K. PATEL DATE : 11-19

DOCUMENT NOT CONSIDERED
 FINAL UNLESS ALL
 SIGNATURES COMPLETED

REVISIONS						SHEET NO.
NO.	BY:	DATE:	NO.	BY:	DATE:	S1-016
1			3			TOTAL SHEETS
2			4			194