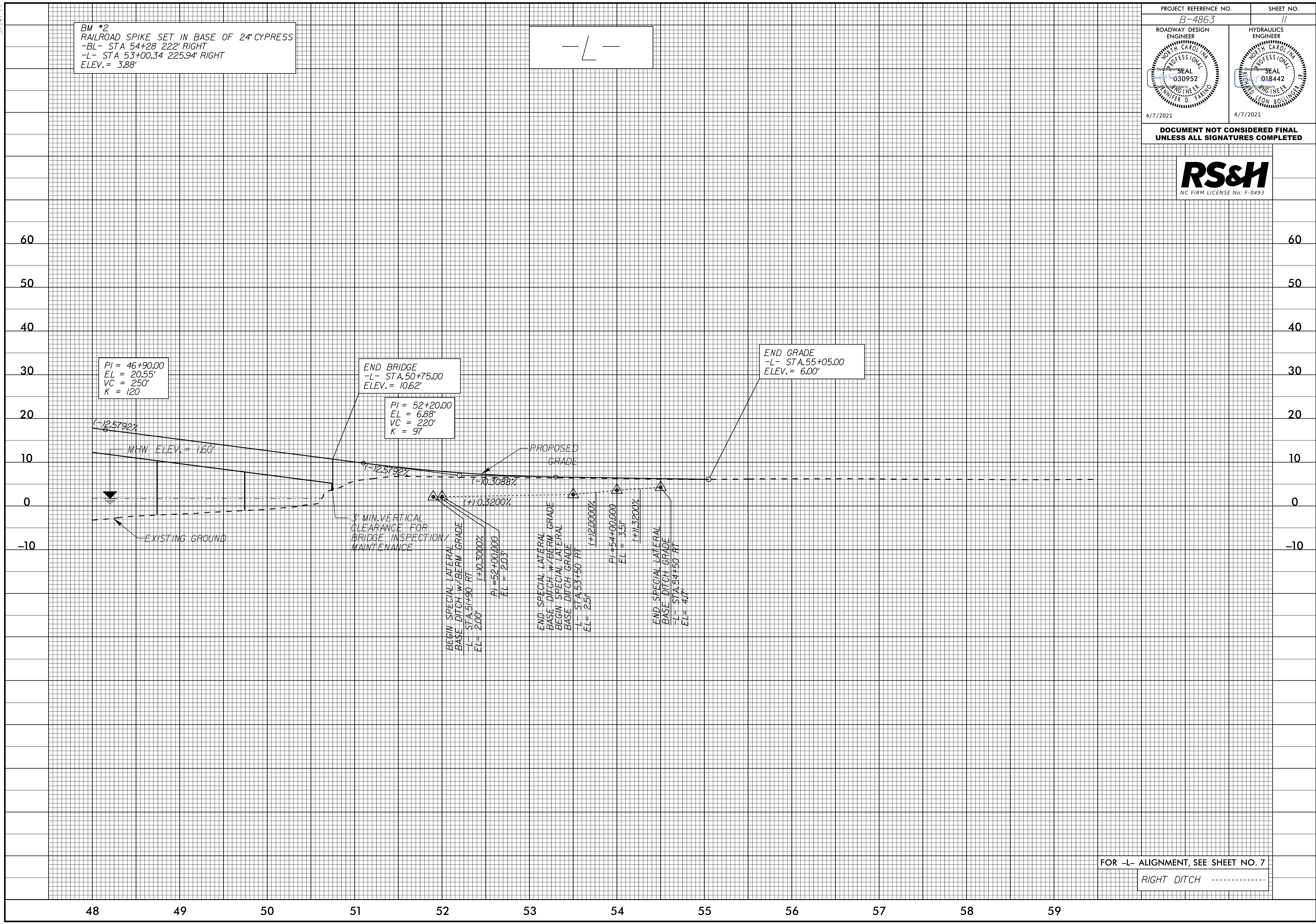


5/14/99

PROJECT REFERENCE NO. B-4863	SHEET NO. 11
ROADWAY DESIGN ENGINEER PROFESSIONAL SEAL 030952 WINNER D. FRANK	HYDRAULICS ENGINEER PROFESSIONAL SEAL 018442 LEON BOLLINGER
4/7/2021	4/7/2021

DOCUMENT NOT CONSIDERED FINAL
UNLESS ALL SIGNATURES COMPLETED



BM #2
RAILROAD SPIKE SET IN BASE OF 24" CYPRESS
-BL- STA 54+28 222' RIGHT
-L- STA 53+00.34 225.94' RIGHT
ELEV. = 3.88'

-L-

PI = 46+90.00
EL = 20.55'
VC = 250'
K = 120

END BRIDGE
-L- STA 50+75.00
ELEV. = 10.62'

PI = 52+20.00
EL = 6.88'
VC = 220'
K = 97

END GRADE
-L- STA 55+05.00
ELEV. = 6.00'

(-)-12.5792%

MHW ELEV. = 160'

(-)-12.5792%

(-)-10.3088%

(+)-0.3200%

(+)-0.3000%

(+)-12.0000%

(+)-12.0000%

(+)-12.0000%

(+)-12.0000%

(+)-12.0000%

(+)-12.0000%

(+)-12.0000%

(+)-12.0000%

(+)-12.0000%

(+)-12.0000%

(+)-12.0000%

(+)-12.0000%

(+)-12.0000%

(+)-12.0000%

(+)-12.0000%

(+)-12.0000%

(+)-12.0000%

(+)-12.0000%

(+)-12.0000%

(+)-12.0000%

(+)-12.0000%

EXISTING GROUND

3' MIN. VERTICAL CLEARANCE FOR BRIDGE INSPECTION/ MAINTENANCE

END SPECIAL LATERAL
BASE DITCH W/BERM GRADE
-L- STA 51+90
EL = 2.00'

BEGIN SPECIAL LATERAL
BASE DITCH W/BERM GRADE
-L- STA 53+50 RT
EL = 2.51'

END SPECIAL LATERAL
BASE DITCH GRADE
-L- STA 54+50 RT
EL = 4.17'

BEGIN SPECIAL LATERAL
BASE DITCH GRADE
-L- STA 54+50 RT
EL = 4.17'

FOR -L- ALIGNMENT, SEE SHEET NO. 7

RIGHT DITCH -----

RS-FEB-2020_09:08
R:\Projects\p-coj\B4863_Rdy_pfl_11.dgn